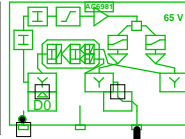


5011406_003D3 - 2 - Vestervej 3A

77430
5011406_003D3.03
AC 3210

285,00: 77,3
762,00: 75,8
985,00: 75,4
1140,00: 75,2
1200,00: 75,2
CNR: 450,00: 49,1 dB
RL: 91,5



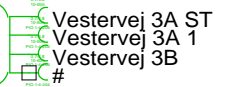
285,00: 100,4
762,00: 105,5
985,00: 107,7
1140,00: 109,2
1200,00: 109,8
CNR: 450,00: 48,7 dB
RL: 72,9

285,00: 99,8
762,00: 102,4
985,00: 103,6
1140,00: 104,5
1200,00: 104,9
CNR: 450,00: 48,7 dB
RL: 73,9

RP: 1,20 A, 45,9 V

AC6113

SIT 4-28 S



Lev: 71,2 / 76,3
RL: 102,5
Max: 53,1 m

RP: 0,26 A, 45,9 V

SIPP1A

RP: 0,26 A, 45,9 V

4.9/19.4 i sløjfe 77042

0m - 2.2/8.8 CER

0m - 2.2/8.8 CER

9 - Vestervej 9

2

3 - Vestervej 4

1

Forstærkerliste 5011406_003D3-2

5011406_003D3.03 (77430) / AC 3210		
A1	100,2	110,0
A2	99,7	105,0
ALSC-mode AC3210	AGC module	
AC3x10 D0-mode	Output mode	Equ: 7 dB
AC3210 Returvej		
AC 3210ret.indgang	Out2 Optimi	RV: 0 dB
R3dB	Modem Opt	RPad: 3 dB
AC 3210ret.indgang	Out1 Optimi	RV: 0 dB
R4dB	Modem Opt	RPad: 4 dB
CXF204		
CXF204, 2x		
AC6120		
AC6981		

Antenna Installation/Network

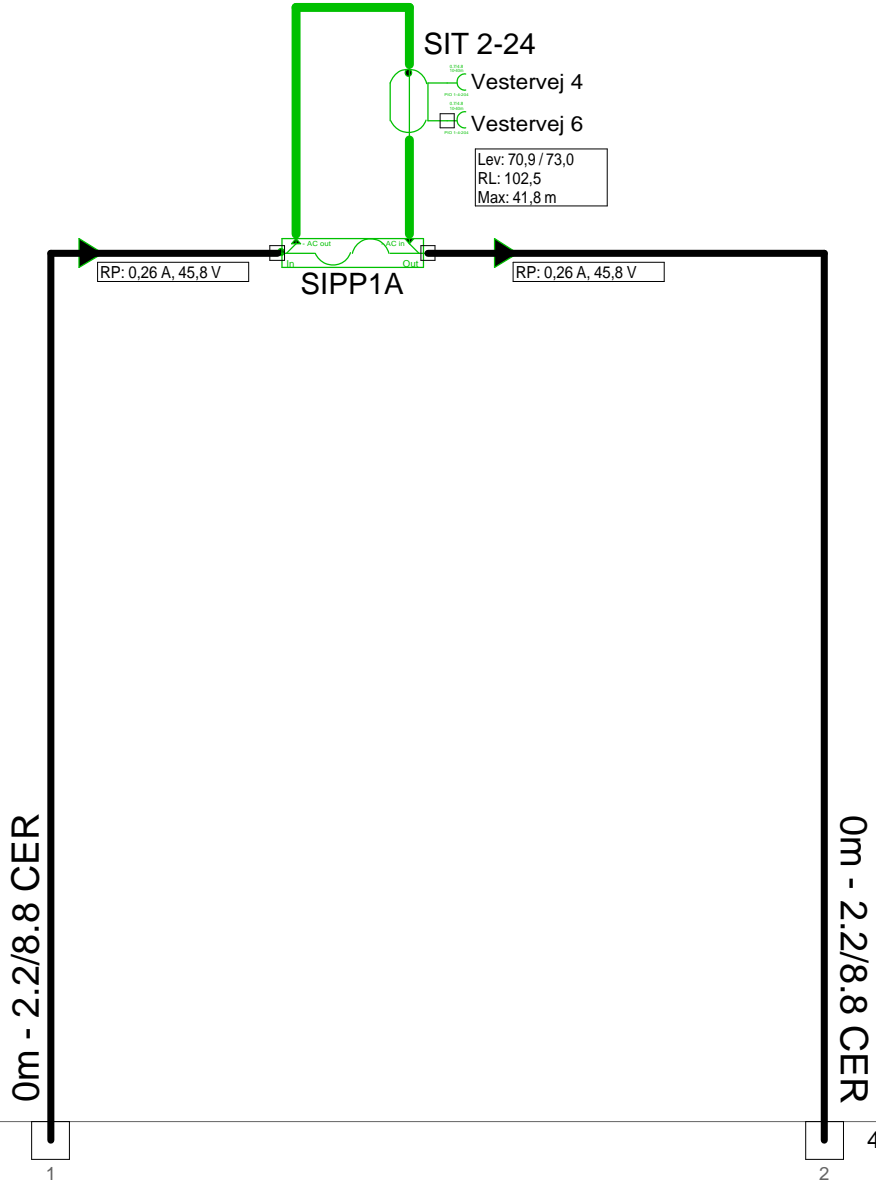
Operator

Version	Edited by Ejvind Hansen	Date 24-08-2018
---------	-----------------------------------	---------------------------

Size	Project 5011406_003D3	Sheet Id:2/No:2, 2/11
------	---------------------------------	--------------------------

AND Version 4.12, Serial No. 14000-1-LP for: Dansk Kabel TV Tegholmegade 1 DK - 0900 København C	Sheet name 5011406_003D
--	-----------------------------------

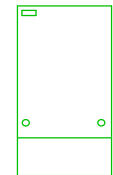
5011406_003D3 - 3 - Vestervej 4



2 - Vestervej 3A

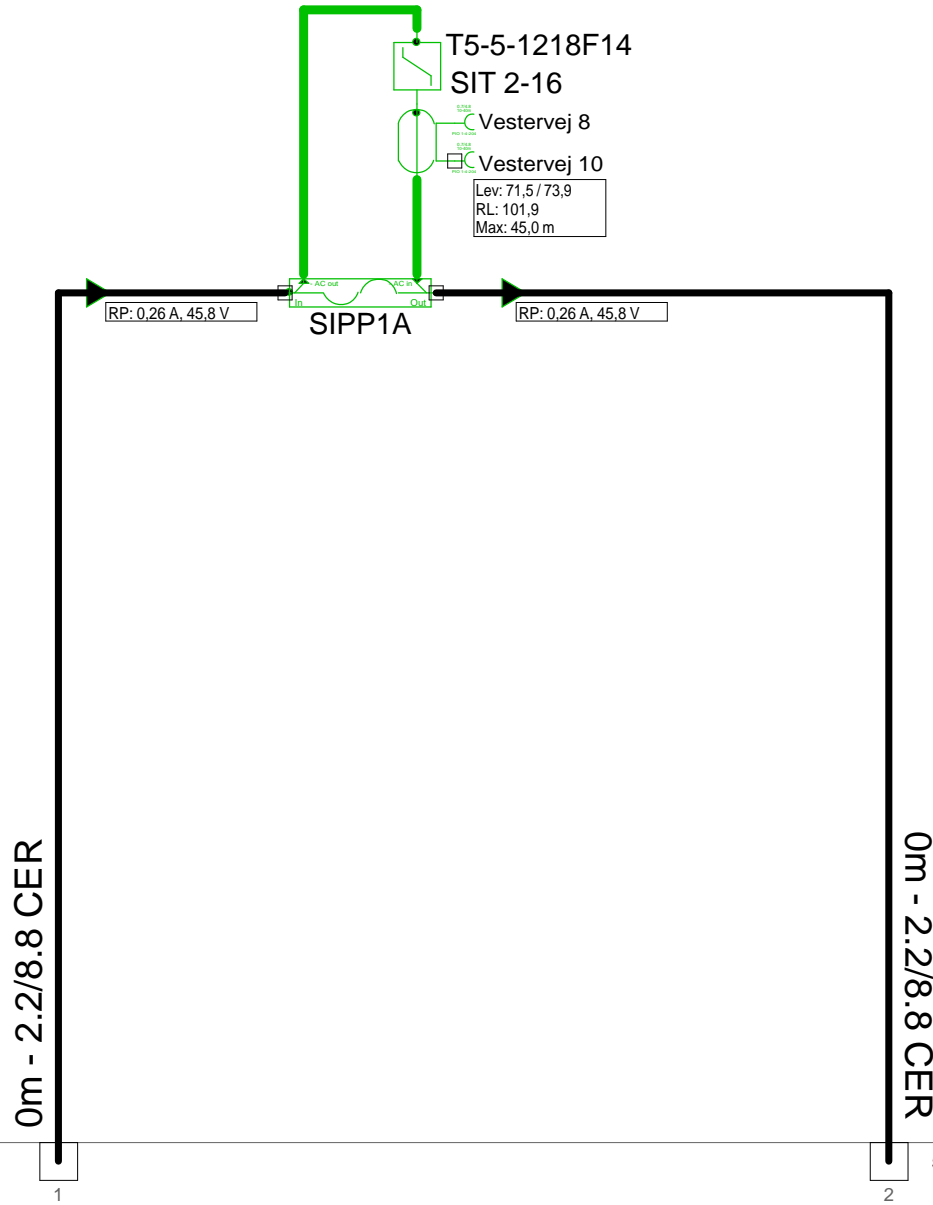
4 - Vestervej 10

STVØ

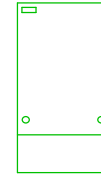


Antenna Installation/Network		Minimum Frequency	Maximum Frequency
		267 MHz	1226 MHz
Operator			
Version	Edited by Ejvind Hansen		Date 24-08-2018
Size	Project 5011406_003D3		Sheet Id:3/No:3, 3/11
AND Version 4.12, Serial No. 14000-1-LP for: Dansk Kabel TV Tegholmegade 1 DK - 0900 København C			Sheet name STVØ

5011406_003D3 - 4 - Vestervej 10



STVØ

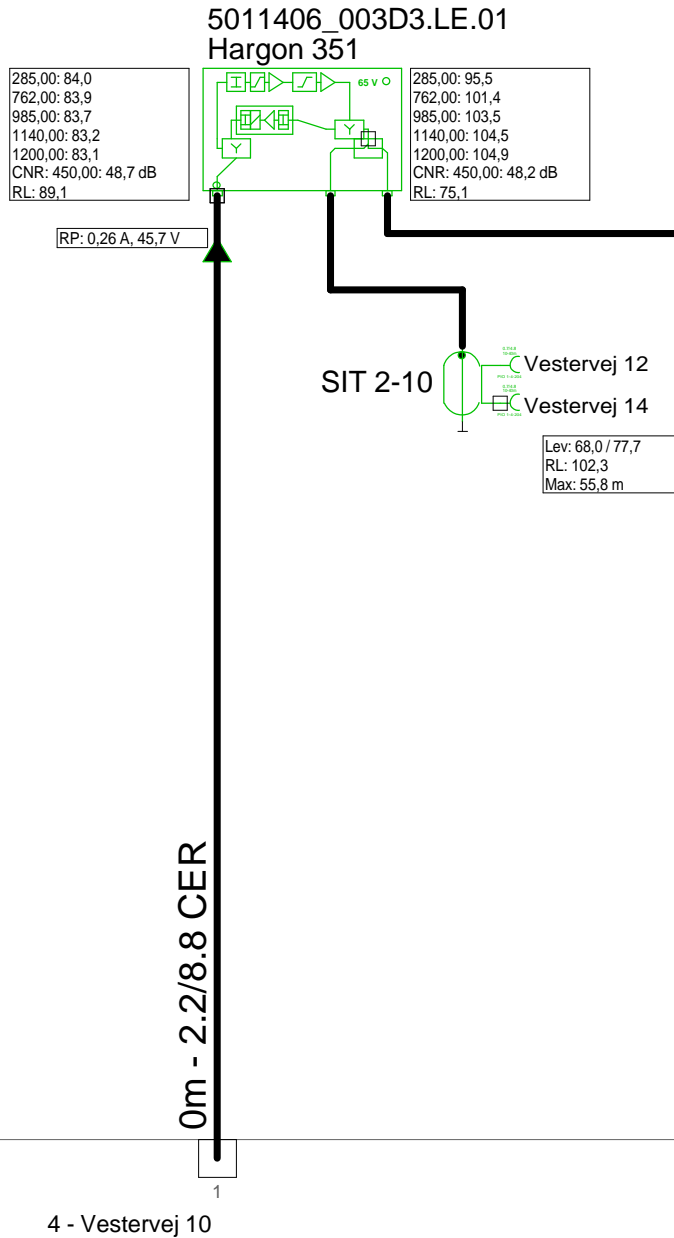


3 - Vestervej 4

5 - Vestervej 14

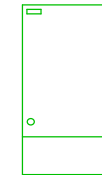
Antenna Installation/Network		Minimum Frequency	Maximum Frequency
		267 MHz	1226 MHz
Operator			
Version	Edited by Ejvind Hansen		Date 24-08-2018
Size	Project 5011406_003D3		Sheet Id:4/No:4, 4/11
AND Version 4.12, Serial No. 14000-1-LP for: Dansk Kabel TV Teglholmegade 1 DK - 0900 København C			Sheet name STVØ

5011406_003D3 - 5 - Vestervej 14

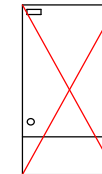


Forstærkerliste 5011406_003D3-5		
5011406_003D3.LE.01 / Hargon 351		
A1	95,3	105,0
AT0dB	Input equ/att	Pad: 0 dB
AT13dB	Attenuator	Pad: 13 dB
EQ1dB 1218MHz	Equalizer	Equ: 1 dB
AT4dB	Interstage a	Pad: 4 dB
EQ13dB 1218MHz	Interstage	Equ: 13 dB
Vector returvej		
Vector returvej 204MHz	Modem opt	RV: 26 dB
AT5dB	Attenuator	RPad: 5 dB
Vector returvejs udg.re	Upstream r	RV: 0 dB
AT7dB	Attenuator	RPad: 7 dB
EQ 0dB 204MHz	Equalizer	REqu: 0 dB
Filter ind 204MHz retur		
Filter ud 204MHz retur		
TO17T		

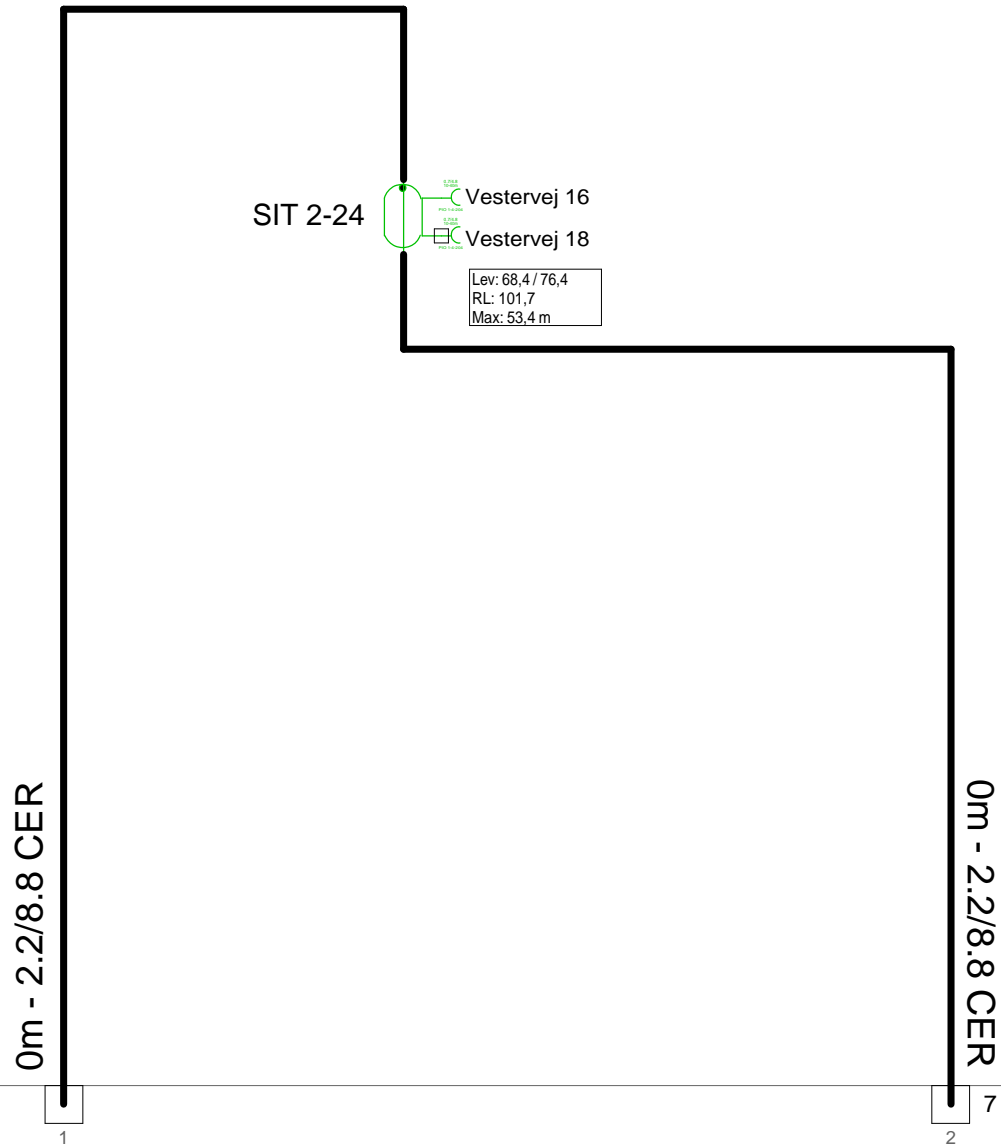
KSAØ 301509



STVØ



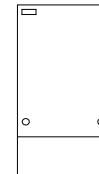
Antenna Installation/Network		Minimum Frequency	Maximum Frequency
		267 MHz	1226 MHz
Operator			
Version	Edited by Ejvind Hansen		Date 24-08-2018
Size	Project 5011406_003D3		Sheet Id:5/No:5, 5/11
AND Version 4.12, Serial No. 14000-1-LP for: Dansk Kabel TV Tegholmegade 1 DK - 0900 København C			Sheet name STVØudtak til KSAØ 30150905



5 - Vestervej 14

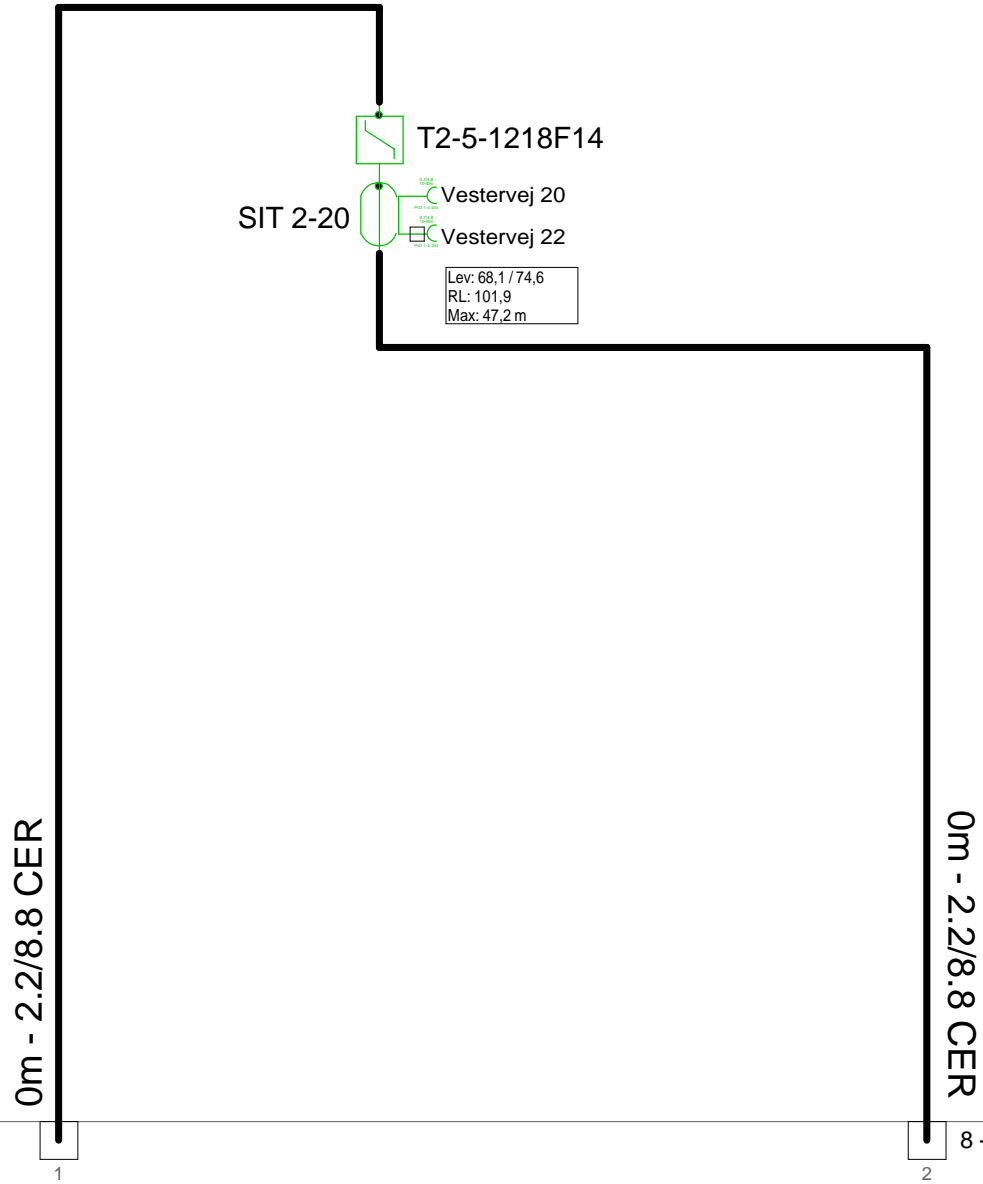
7 - Vestervej 22

STVØ



<i>Antenna Installation/Network</i>		<i>Minimum Frequency</i>	<i>Maximum Frequency</i>
		267 MHz	1226 MHz
<i>Operator</i>			
<i>Version</i>	<i>Edited by</i> Ejvind Hansen		<i>Date</i> 24-08-2018
<i>Size</i>	<i>Project</i> 5011406_003D3		<i>Sheet Id:6/No:6, 6/11</i>
<i>AND Version 4.12, Serial No. 14000-1-LP for:</i> Dansk Kabel TV Teglholmegade 1 DK - 0900 København C			<i>Sheet name</i> STVØ

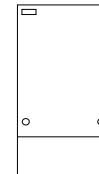
5011406_003D3 - 7 - Vestervej 22



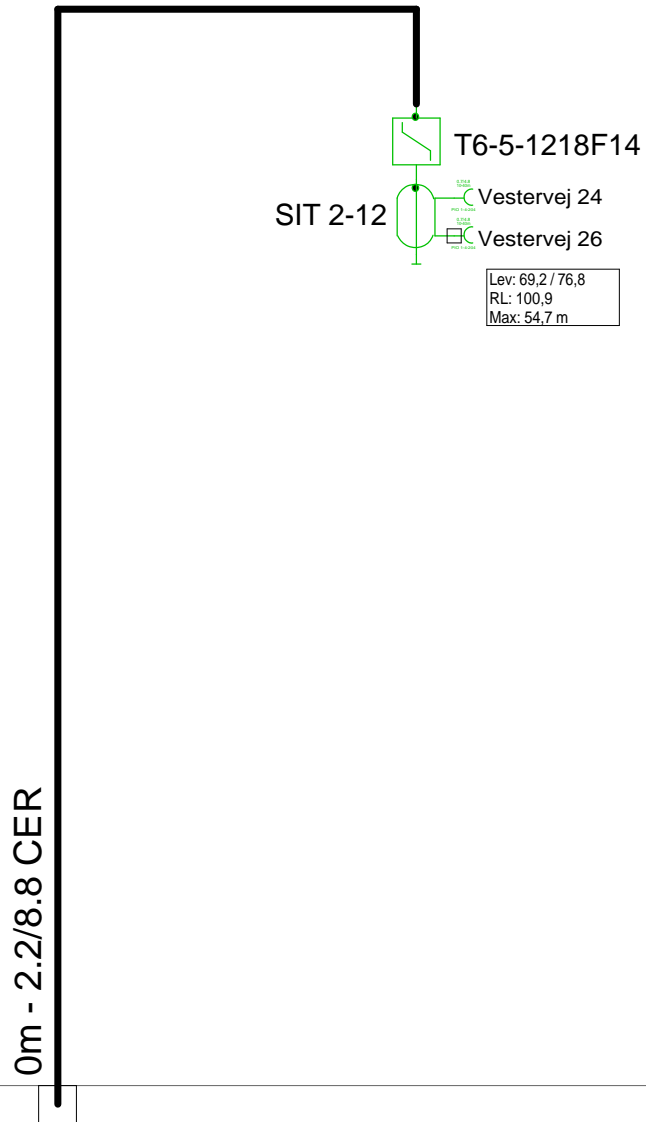
6 - Vestervej 18

8 - Vestervej 26

STVØ

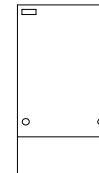


Antenna Installation/Network		Minimum Frequency	Maximum Frequency
		267 MHz	1226 MHz
Operator			
Version	Edited by Ejvind Hansen		Date 24-08-2018
Size	Project 5011406_003D3		Sheet Id:7/No:7, 7/11
AND Version 4.12, Serial No. 14000-1-LP for: Dansk Kabel TV Teglholmegade 1 DK - 0900 København C			Sheet name STVØ

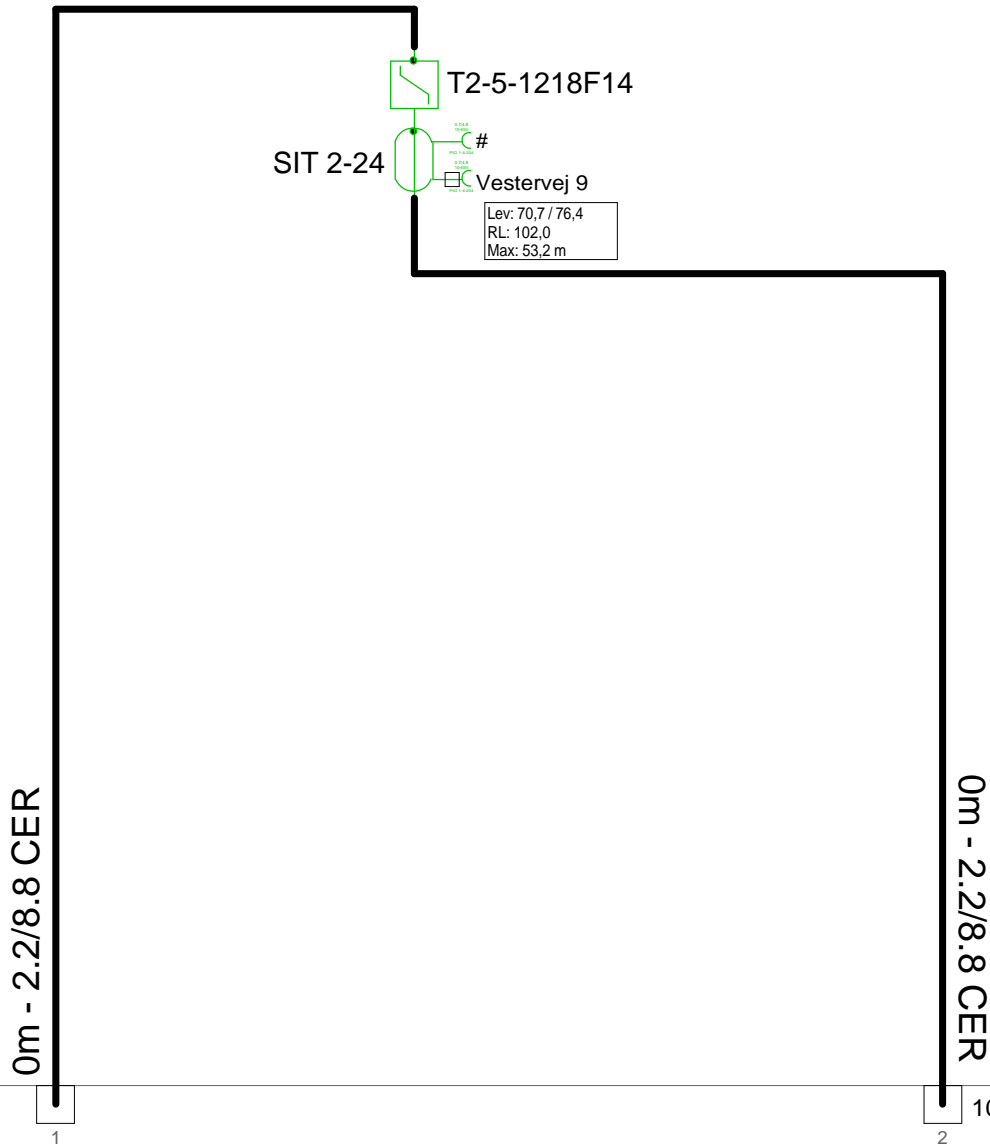


7 - Vestervej 22

STVØ



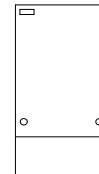
Antenna Installation/Network		Minimum Frequency	Maximum Frequency
		267 MHz	1226 MHz
Operator			
Version	Edited by Ejvind Hansen		Date 24-08-2018
Size	Project 5011406_003D3		Sheet Id:8/No:8, 8/11
AND Version 4.12, Serial No. 14000-1-LP for: Dansk Kabel TV Teglholmegade 1 DK - 0900 København C			Sheet name STVØ



2 - Vestervej 3A

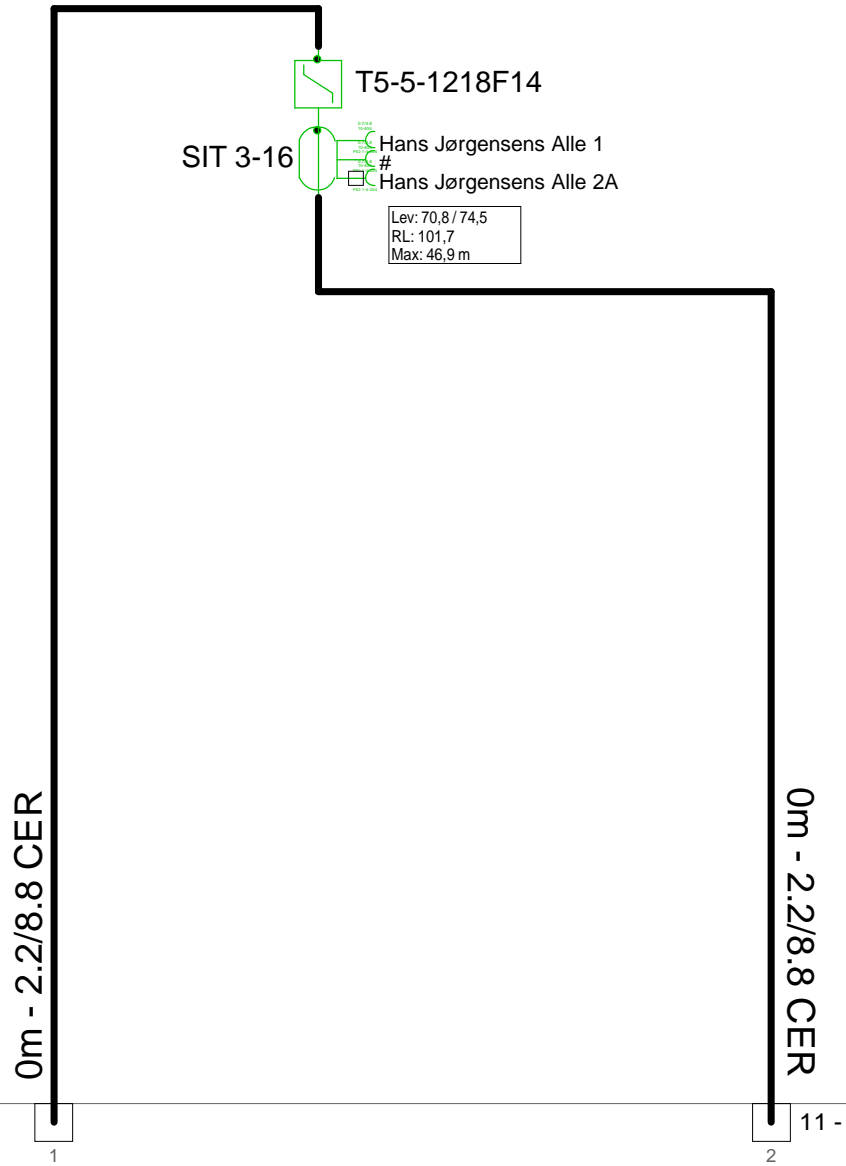
10 - Hans Jørgensens Alle 1

STVØ



Antenna Installation/Network		Minimum Frequency	Maximum Frequency
		267 MHz	1226 MHz
Operator			
Version	Edited by Ejvind Hansen		Date 24-08-2018
Size	Project 5011406_003D3		Sheet Id:9/No:9, 9/11
AND Version 4.12, Serial No. 14000-1-LP for: Dansk Kabel TV Teglgolmsgade 1 DK - 0900 København C			Sheet name STVØ

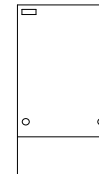
5011406_003D3 - 10 - Hans Jørgensens Alle 1



9 - Vestervej 9

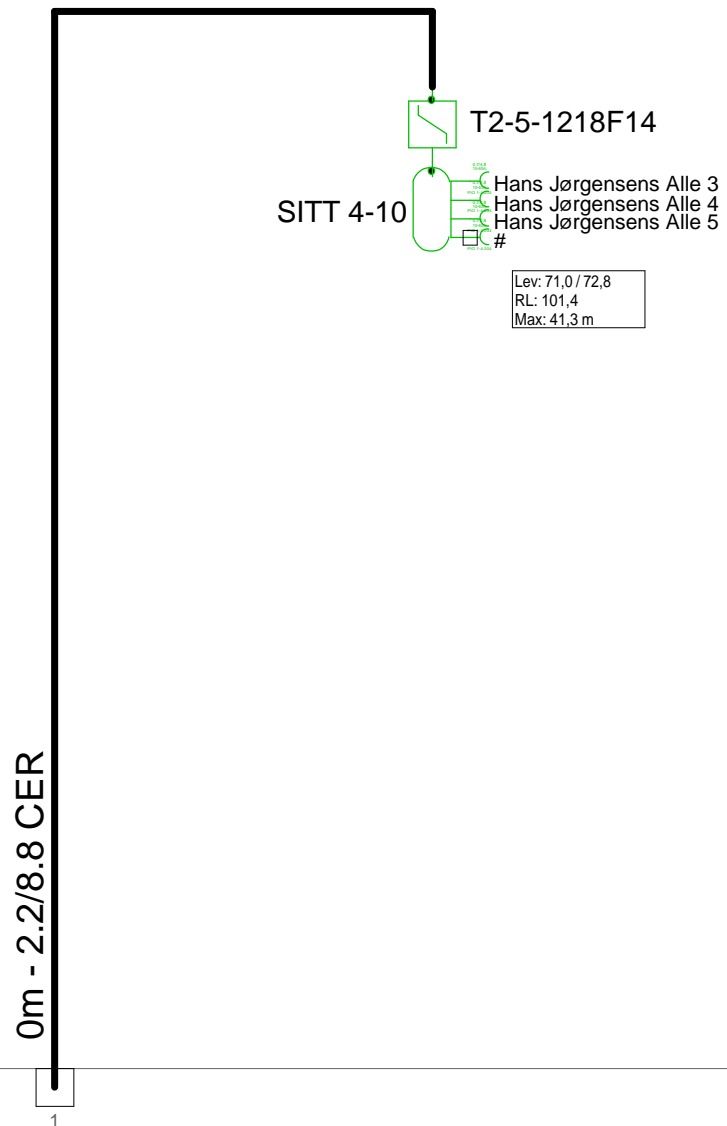
11 -

STVØ



Antenna Installation/Network		Minimum Frequency	Maximum Frequency
		267 MHz	1226 MHz
Operator			
Version	Edited by Ejvind Hansen		Date 24-08-2018
Size	Project 5011406_003D3		Sheet Id:10/No:10, 10/11
AND Version 4.12, Serial No. 14000-1-LP for: Dansk Kabel TV Teglgolmsgade 1 DK - 0900 København C			Sheet name STVØ

5011406_003D3 - 11 - Hans Jørgensens Alle 3



10 - Hans Jørgensens Alle 1

STVØ



Antenna Installation/Network		Minimum Frequency	Maximum Frequency
		267 MHz	1226 MHz
Operator			
Version	Edited by Ejvind Hansen		Date 24-08-2018
Size	Project 5011406_003D3		Sheet Id:11/No:11, 11/11
AND Version 4.12, Serial No. 14000-1-LP for: Dansk Kabel TV Teglholmegade 1 DK - 0900 København C			Sheet name STVØ