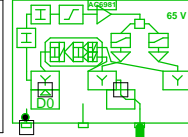




# 5011406\_006D3 - 2 - Vestervej 49

77433  
5011406\_006D3.01  
AC 3210

285,00: 83,9
762,00: 86,6
985,00: 87,6
1140,00: 88,4
1200,00: 88,7
CNR: 450,00: 49,2 dB
RL: 85,7



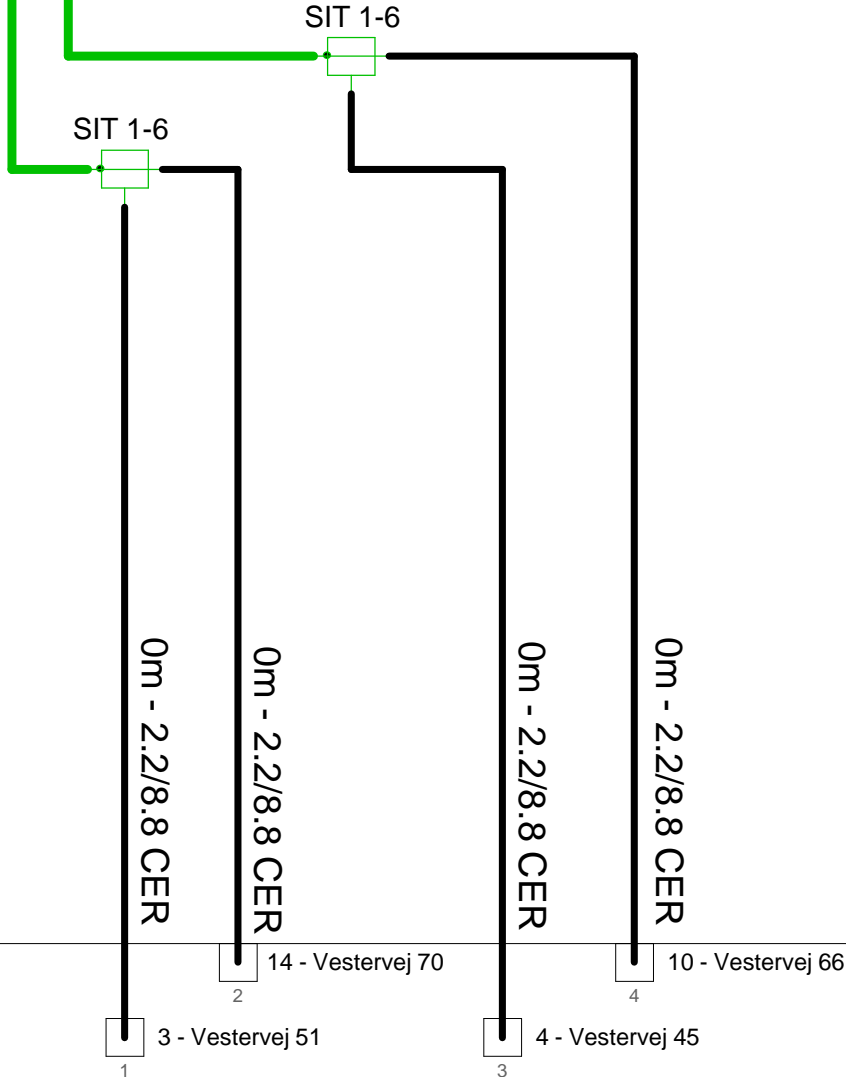
285,00: 100,5
762,00: 105,8
985,00: 107,8
1140,00: 109,3
1200,00: 109,8
CNR: 450,00: 49,0 dB
RL: 71,0

285,00: 100,5
762,00: 105,8
985,00: 107,8
1140,00: 109,3
1200,00: 109,8
CNR: 450,00: 49,0 dB
RL: 70,0

RP: 0,97 A, 44,2 V

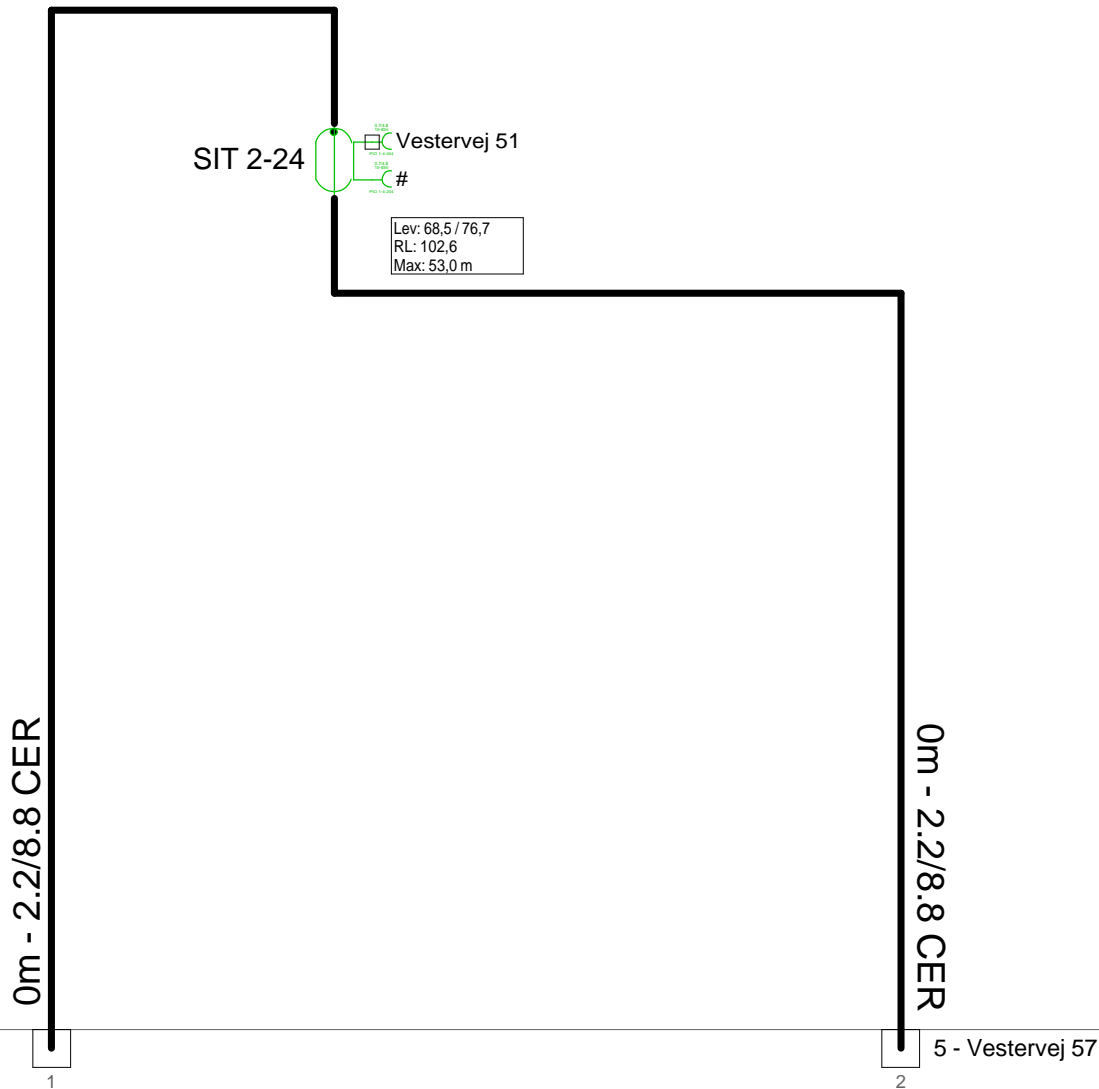
AC6110

4.9/19.4 ind



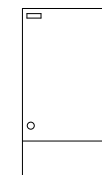
Forstærkerliste 5011406_006D3-2		
5011406_006D3.01 (77433) / AC 3210		
A1	100,2	110,0
A2	100,2	110,0
TXS008	Input Equali	Equ: -8 dB
ALSC-mode AC3210	AGC module	
AC3x10 D3-mode	Output mode	Equ: 13 dB
AC3210 Returvej		
AC 3210ret.indgang	Out2 Optimi	RV: 0 dB
R1dB	Modem Opt	RPad: 1 dB
AC 3210ret.indgang	Out1 Optimi	RV: 0 dB
R0dB	Modem Opt	RPad: 0 dB
CXF204		
CXF204, 2x		
AC6120		
AC6981		

Antenna Installation/Network		
Operator		
Version	Edited by <b>Ejvind Hansen</b>	Date <b>11-07-2018</b>
Size	Project <b>5011406_006D3</b>	Sheet Id:2/No:2, 2/16
AND Version 4.12, Serial No. 14000-1-LP for: Dansk Kabel TV Tegholmegade 1 DK - 0900 København C		Sheet name <b>5011406_006D</b>

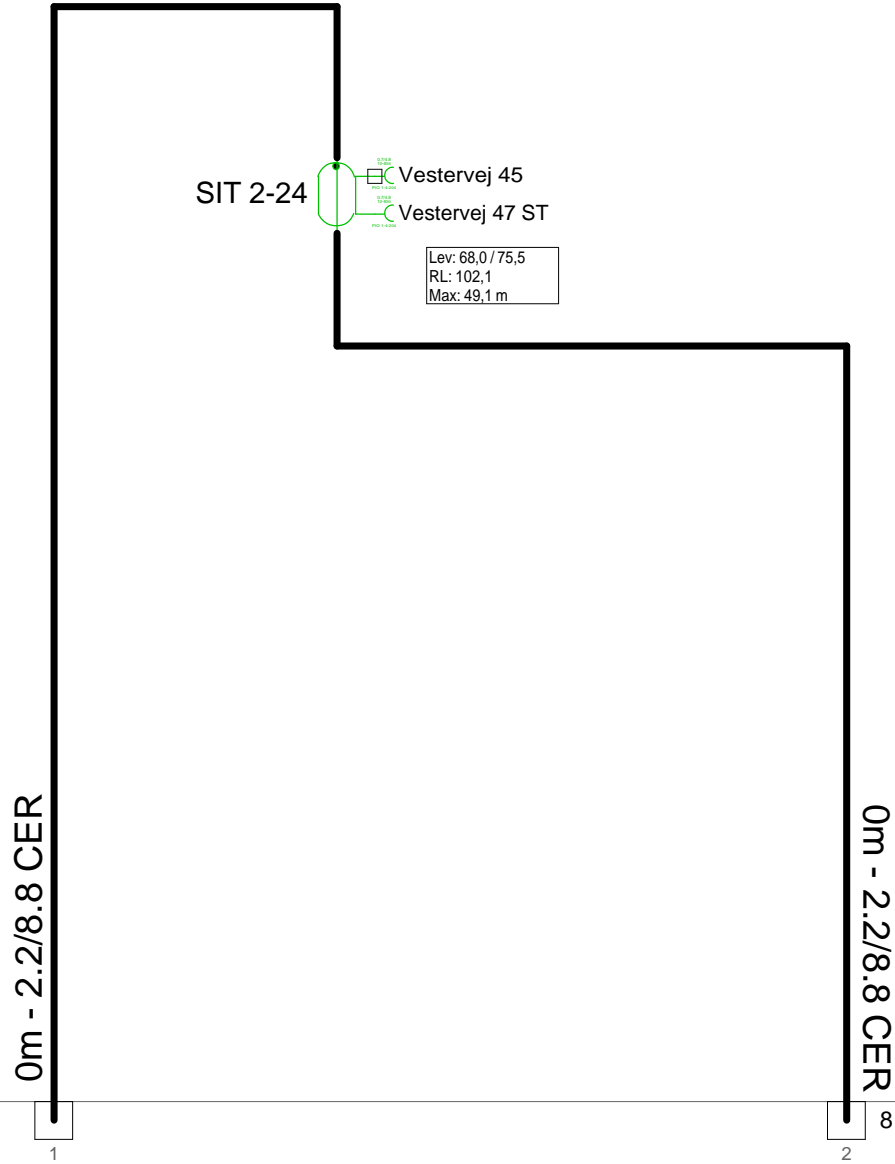


2 - Vestervej 49

STV Ø



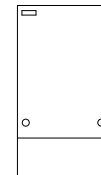
Antenna Installation/Network		Minimum Frequency	Maximum Frequency
		267 MHz	1226 MHz
Operator			
Version	Edited by <b>Ejvind Hansen</b>		Date <b>11-07-2018</b>
Size	Project <b>5011406_006D3</b>		Sheet Id:3/No:3, 3/16
AND Version 4.12, Serial No. 14000-1-LP for: Dansk Kabel TV Teglholmegade 1 DK - 0900 København C			Sheet name <b>STV Ø</b>



2 - Vestervej 47

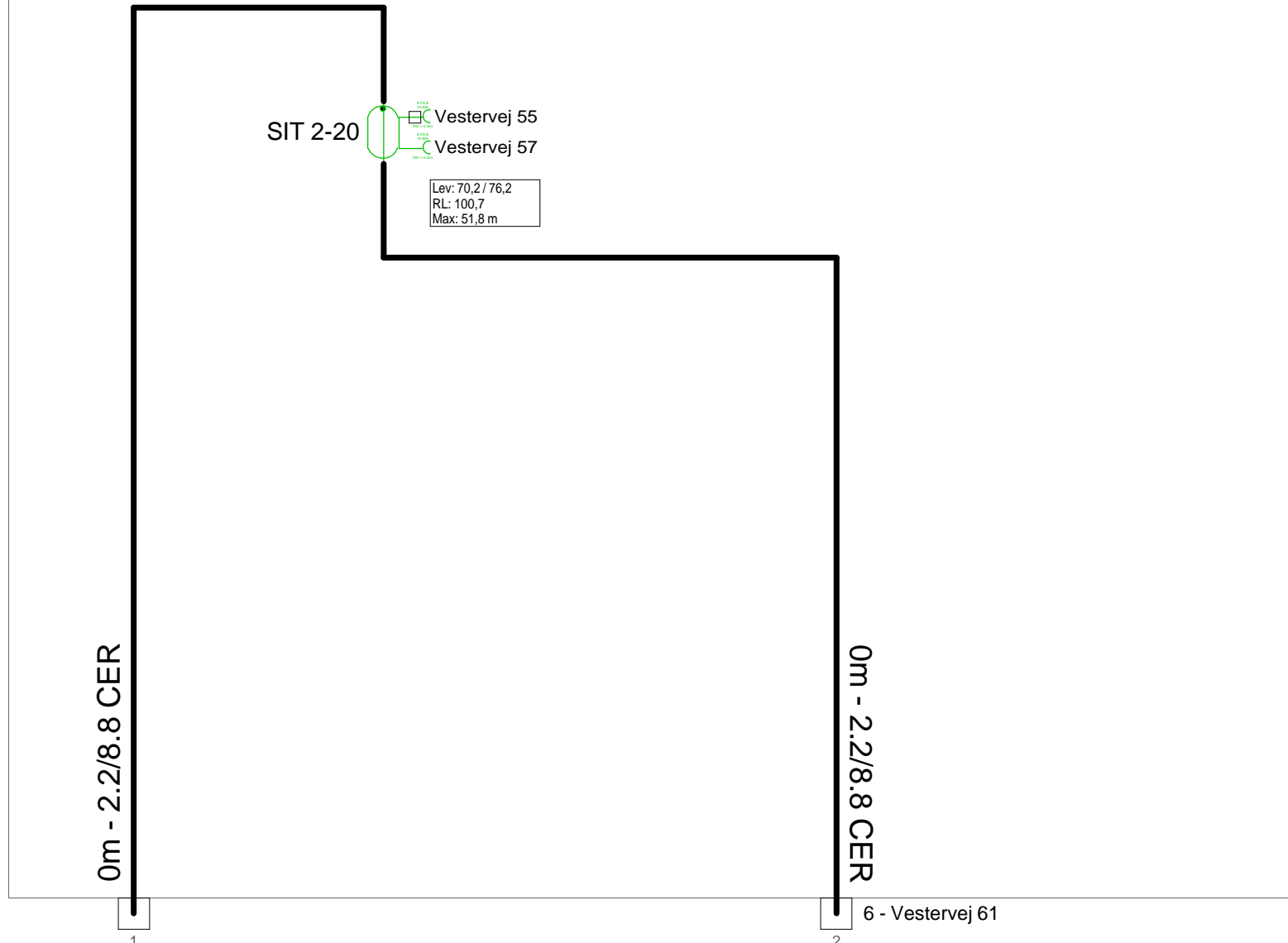
8 - Vestervej 43

STV Ø



Antenna Installation/Network		Minimum Frequency	Maximum Frequency
		267 MHz	1226 MHz
Operator			
Version	Edited by <b>Ejvind Hansen</b>		Date <b>11-07-2018</b>
Size	Project <b>5011406_006D3</b>		Sheet Id:4/No:4, 4/16
AND Version 4.12, Serial No. 14000-1-LP for: Dansk Kabel TV Teglgolmsgade 1 DK - 0900 København C			Sheet name <b>STV Ø</b>

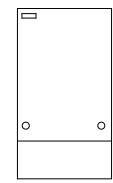
5011406\_006D3 - 5 - Vestervej 57



3 - Vestervej 51

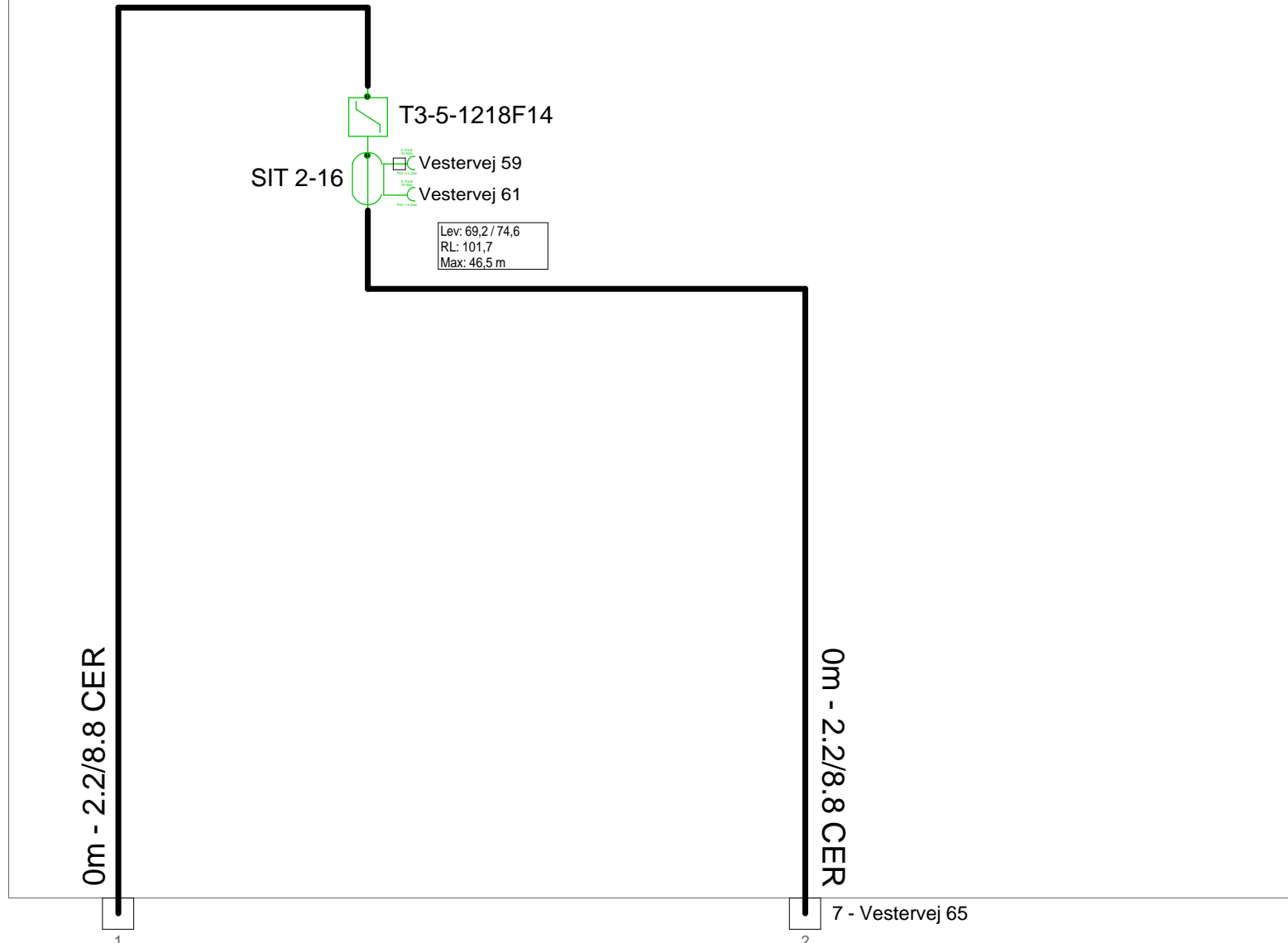
6 - Vestervej 61

STV Ø



Antenna Installation/Network		Minimum Frequency	Maximum Frequency
		267 MHz	1226 MHz
Operator			
Version	Edited by <b>Ejvind Hansen</b>		Date <b>11-07-2018</b>
Size	Project <b>5011406_006D3</b>		Sheet Id:5/No:5, 5/16
AND Version 4.12, Serial No. 14000-1-LP for: Dansk Kabel TV Teglgolmsgade 1 DK - 0900 København C			Sheet name <b>STV Ø</b>

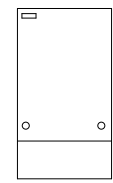
5011406\_006D3 - 6 - Vestervej 61



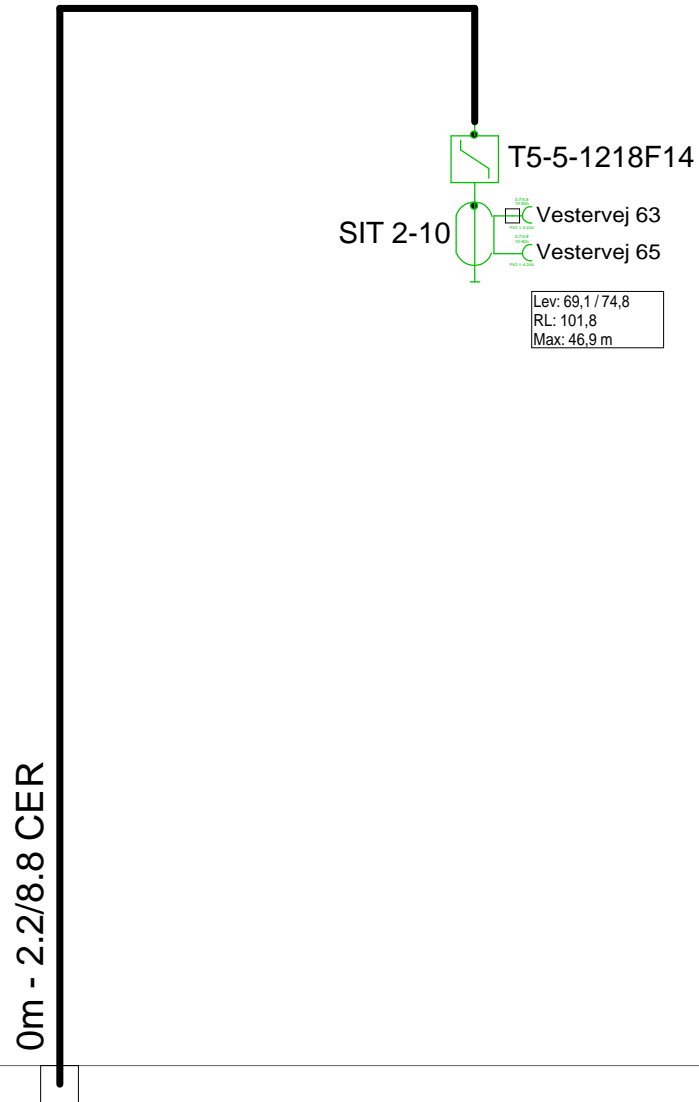
5 - Vestervej 57

7 - Vestervej 65

STV Ø

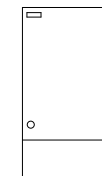


Antenna Installation/Network		Minimum Frequency	Maximum Frequency
		267 MHz	1226 MHz
Operator			
Version	Edited by <b>Ejvind Hansen</b>		Date <b>11-07-2018</b>
Size	Project <b>5011406_006D3</b>		Sheet Id:6/No:6, 6/16
AND Version 4.12, Serial No. 14000-1-LP for: Dansk Kabel TV Teglgolmsgade 1 DK - 0900 København C			Sheet name <b>STV Ø</b>



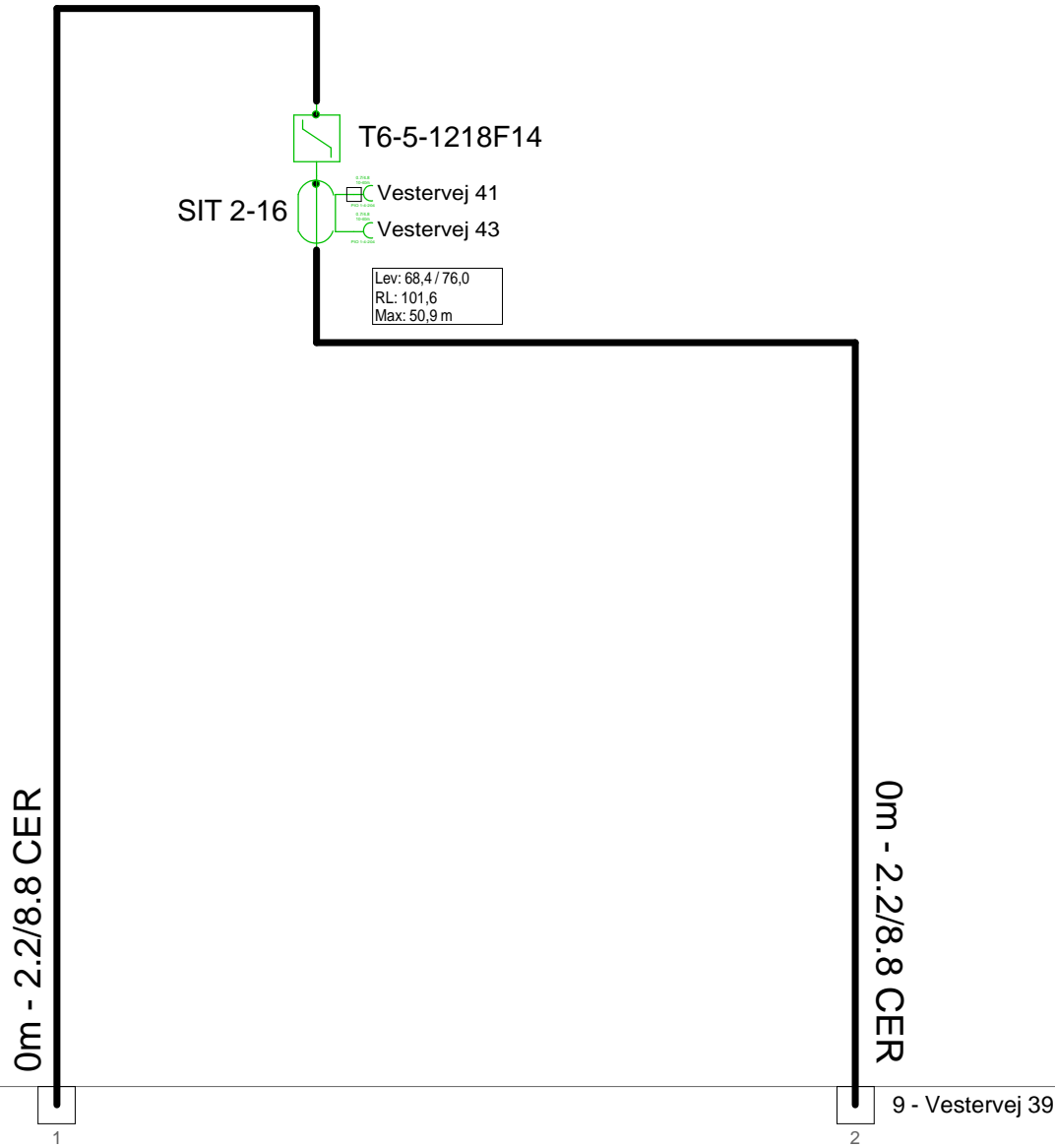
1  
6 - Vestervej 61

STV Ø



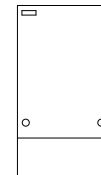
Antenna Installation/Network		Minimum Frequency	Maximum Frequency
		267 MHz	1226 MHz
Operator			
Version	Edited by <b>Ejvind Hansen</b>		Date <b>11-07-2018</b>
Size	Project <b>5011406_006D3</b>		Sheet Id:7/No:7, 7/16
AND Version 4.12, Serial No. 14000-1-LP for: Dansk Kabel TV Tegholmegade 1 DK - 0900 København C			Sheet name <b>STV Ø</b>

5011406\_006D3 - 8 - Vestervej 43



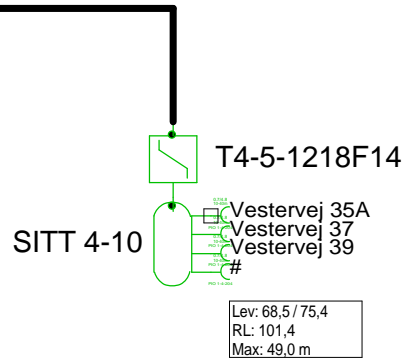
4 - Vestervej 45

STV Ø



Antenna Installation/Network		Minimum Frequency	Maximum Frequency
		267 MHz	1226 MHz
Operator			
Version	Edited by <b>Ejvind Hansen</b>		Date <b>11-07-2018</b>
Size	Project <b>5011406_006D3</b>		Sheet Id:8/No:8, 8/16
AND Version 4.12, Serial No. 14000-1-LP for: Dansk Kabel TV Teglgolmsgade 1 DK - 0900 København C			Sheet name <b>STV Ø</b>



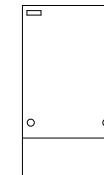


0m - 2.2/8.8 CER

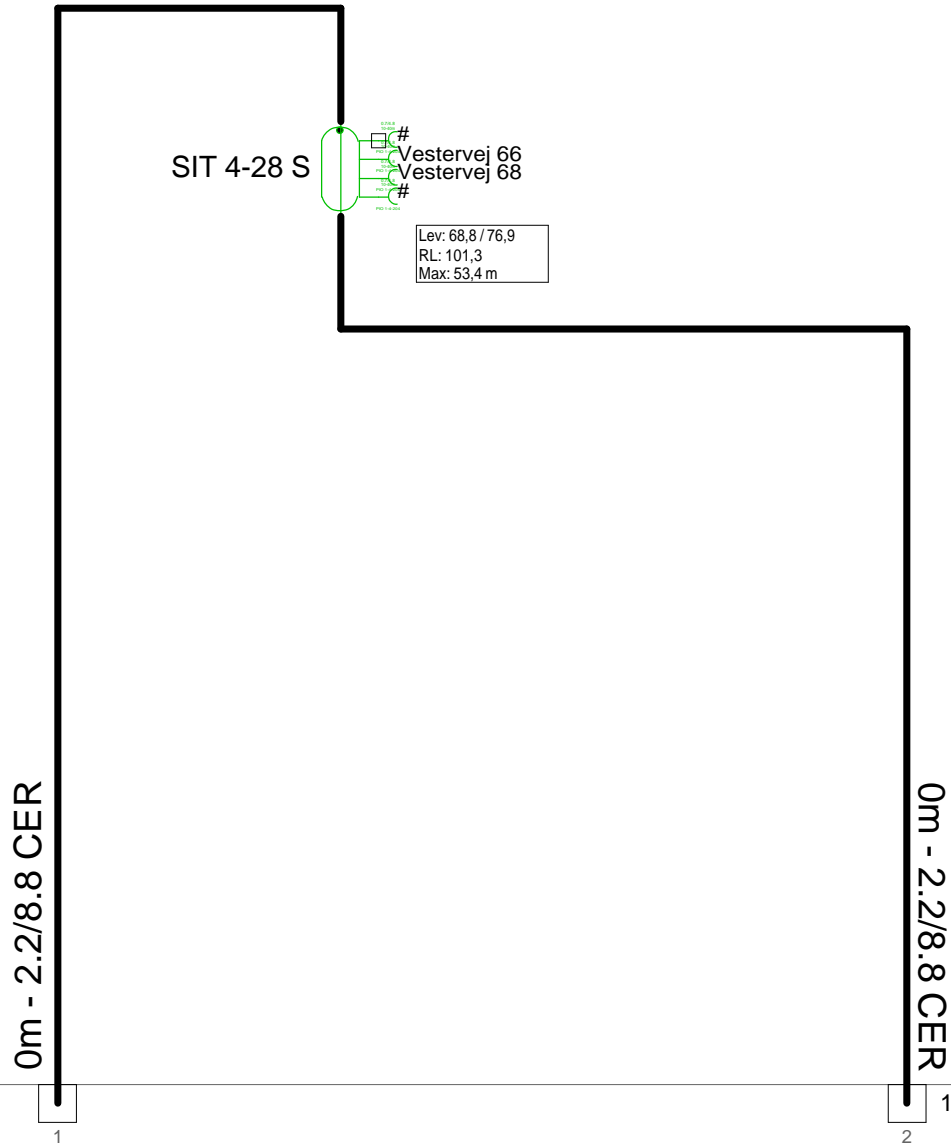
1

8 - Vestervej 43

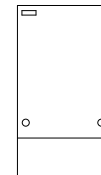
STV Ø



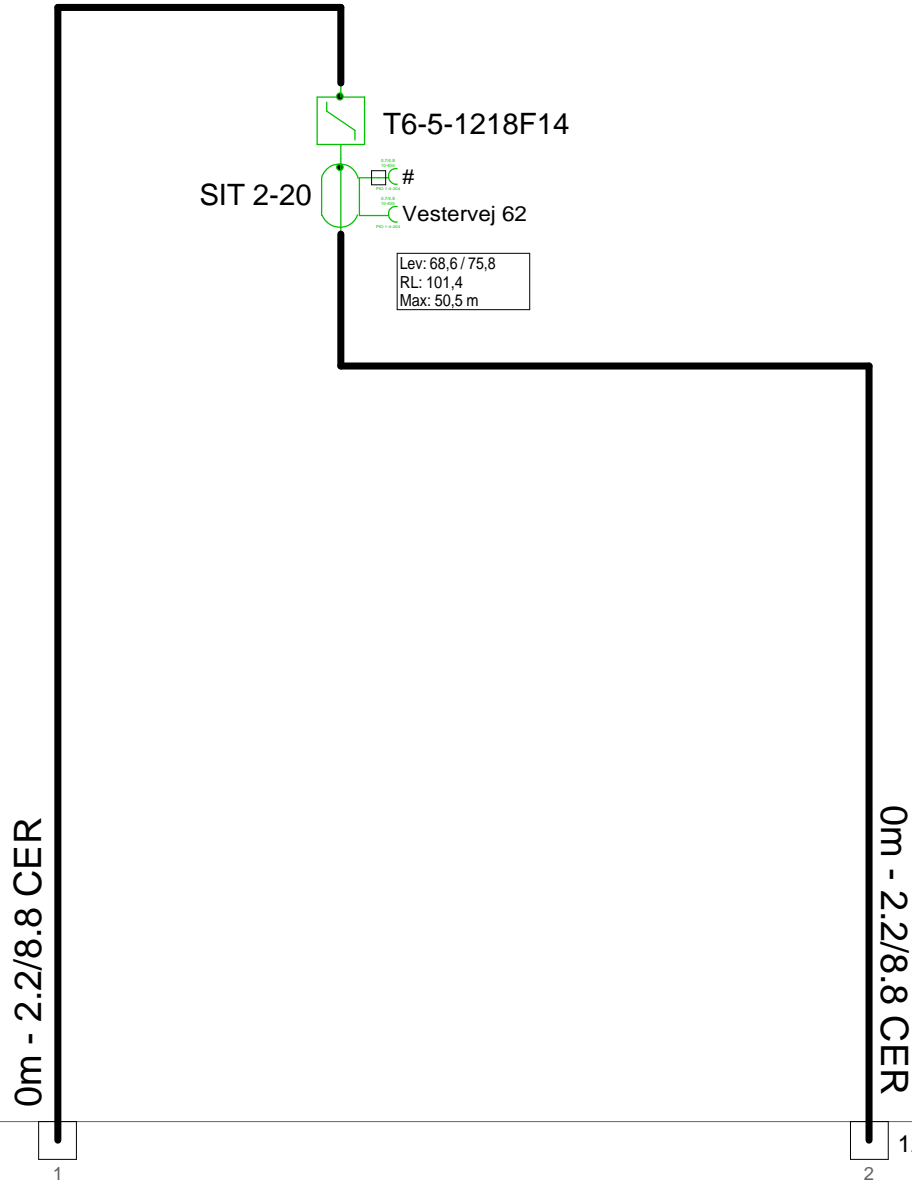
Antenna Installation/Network		Minimum Frequency	Maximum Frequency
		267 MHz	1226 MHz
Operator			
Version	Edited by <b>Ejvind Hansen</b>		Date <b>11-07-2018</b>
Size	Project <b>5011406_006D3</b>		Sheet Id:9/No:9, 9/16
AND Version 4.12, Serial No. 14000-1-LP for: Dansk Kabel TV Teglholmegade 1 DK - 0900 København C			Sheet name <b>STV Ø</b>



STV Ø



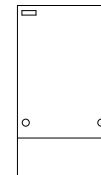
Antenna Installation/Network		Minimum Frequency	Maximum Frequency
		267 MHz	1226 MHz
Operator			
Version	Edited by <b>Ejvind Hansen</b>		Date <b>11-07-2018</b>
Size	Project <b>5011406_006D3</b>		Sheet Id:10/No:10, 10/16
AND Version 4.12, Serial No. 14000-1-LP for: Dansk Kabel TV Teglholmegade 1 DK - 0900 København C			Sheet name <b>STV Ø</b>



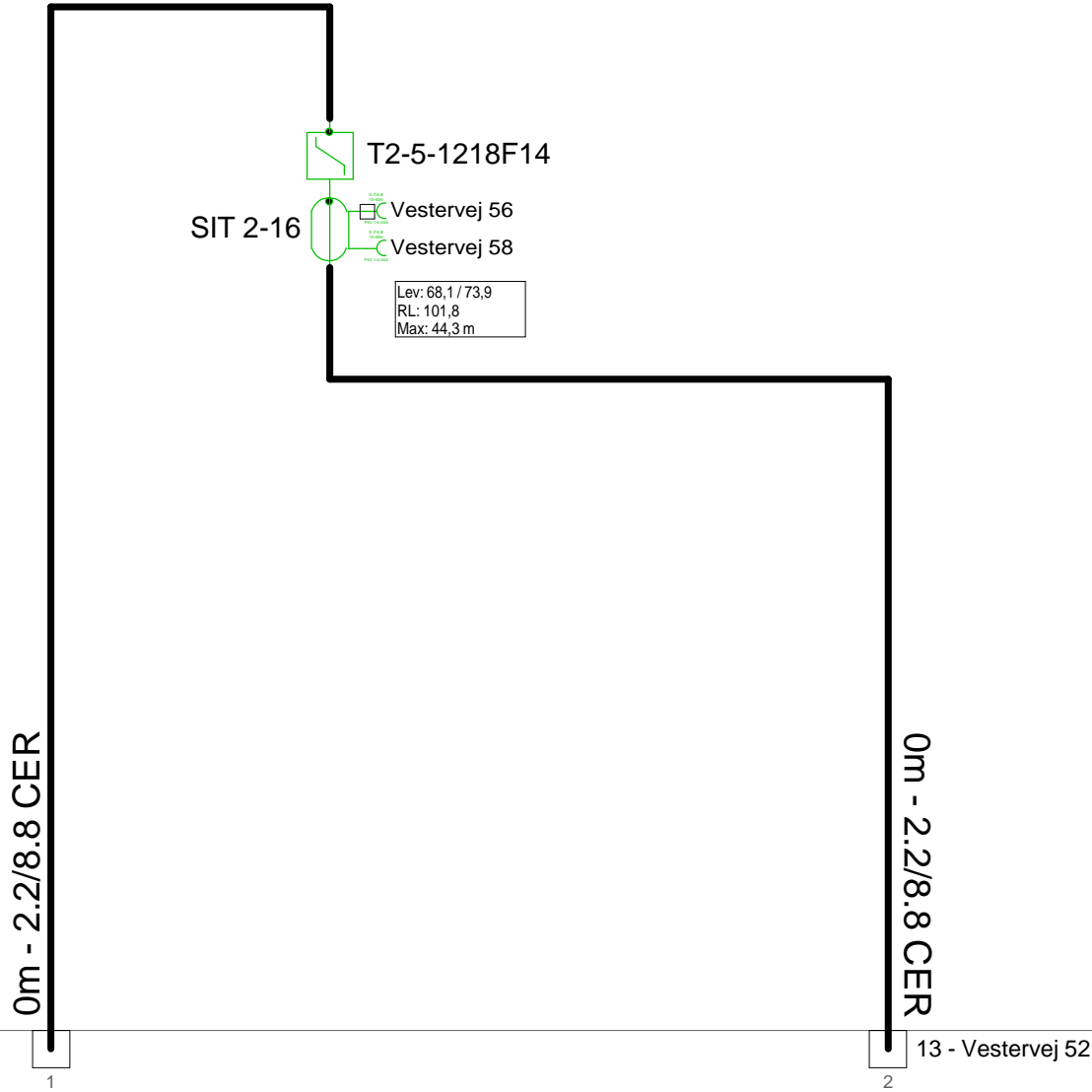
10 - Vestervej 66

12 - Vestervej 58

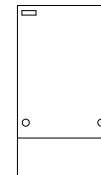
STV Ø



Antenna Installation/Network		Minimum Frequency	Maximum Frequency
		267 MHz	1226 MHz
Operator			
Version	Edited by <b>Ejvind Hansen</b>		Date <b>11-07-2018</b>
Size	Project <b>5011406_006D3</b>		Sheet Id:11/No:11, 11/16
AND Version 4.12, Serial No. 14000-1-LP for: Dansk Kabel TV Teglholmegade 1 DK - 0900 København C			Sheet name <b>STV Ø</b>



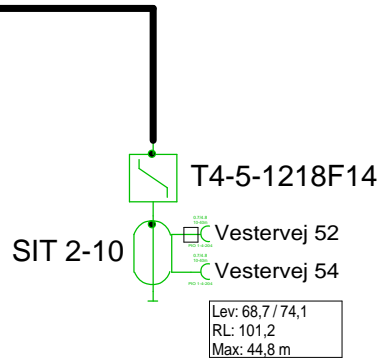
STV Ø



11 - Vestervej 62

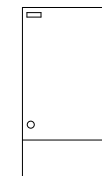
Antenna Installation/Network		Minimum Frequency	Maximum Frequency
		267 MHz	1226 MHz
Operator			
Version	Edited by <b>Ejvind Hansen</b>		Date <b>11-07-2018</b>
Size	Project <b>5011406_006D3</b>		Sheet Id:12/No:12, 12/16
AND Version 4.12, Serial No. 14000-1-LP for: Dansk Kabel TV Teglholmegade 1 DK - 0900 København C			Sheet name <b>STV Ø</b>

0m - 2.2/8.8 CER

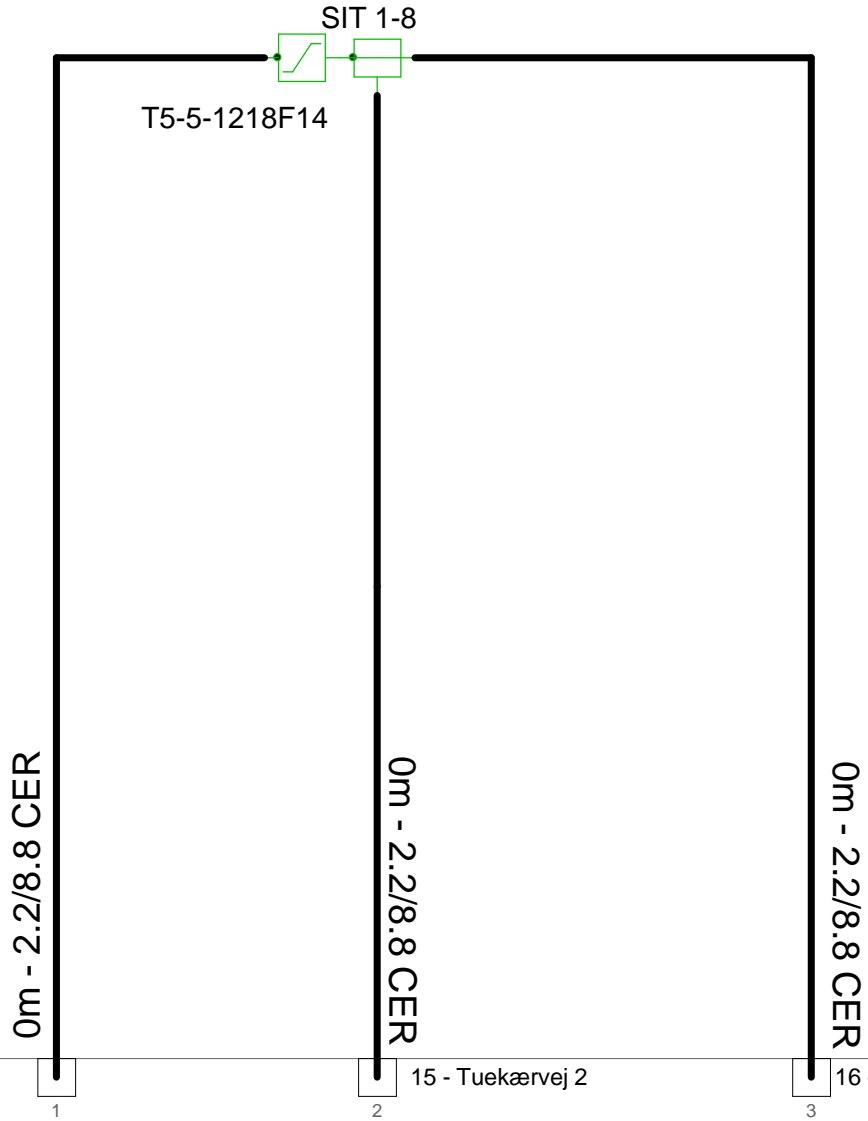


12 - Vestervej 58

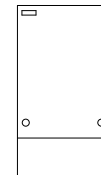
STV Ø



Antenna Installation/Network		Minimum Frequency	Maximum Frequency
		267 MHz	1226 MHz
Operator			
Version	Edited by <b>Ejvind Hansen</b>		Date <b>11-07-2018</b>
Size	Project <b>5011406_006D3</b>		Sheet Id:13/No:13, 13/16
AND Version 4.12, Serial No. 14000-1-LP for: Dansk Kabel TV Teglholmegade 1 DK - 0900 København C			Sheet name <b>STV Ø</b>



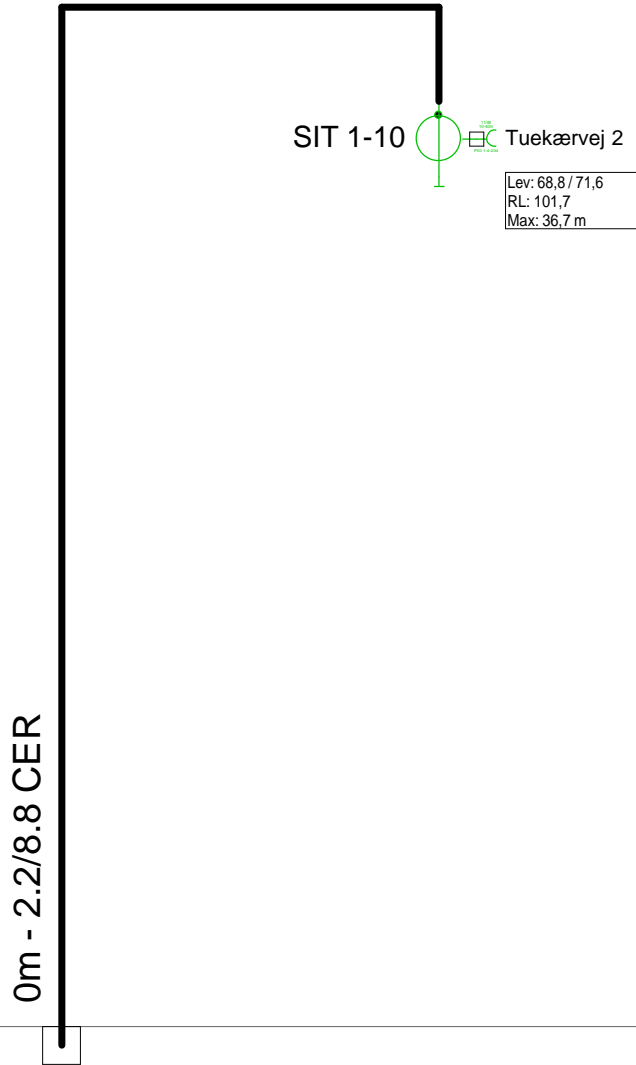
STV Ø



2 - Vestervej 47

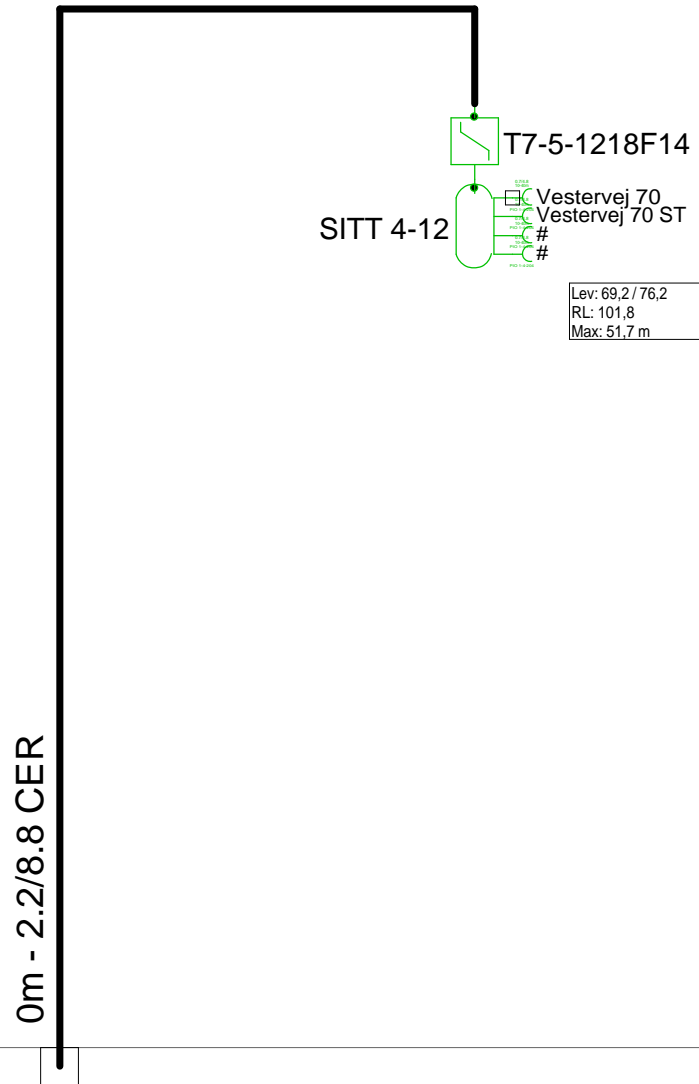
<i>Antenna Installation/Network</i>		<i>Minimum Frequency</i>	<i>Maximum Frequency</i>
		<b>267 MHz</b>	<b>1226 MHz</b>
<i>Operator</i>			
<i>Version</i>	<i>Edited by</i> <b>Ejvind Hansen</b>		<i>Date</i> <b>11-07-2018</b>
<i>Size</i>	<i>Project</i> <b>5011406_006D3</b>		<i>Sheet</i> Id:14/No:14, 14/16
<i>AND Version 4.12, Serial No. 14000-1-LP for:</i> <b>Dansk Kabel TV Teglgolmsgade 1 DK - 0900 København C</b>			<i>Sheet name</i> <b>STV Ø</b>

# 5011406\_006D3 - 15 - Tuekærvej 2



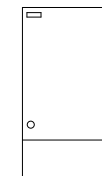
14 - Vestervej 70

Antenna Installation/Network		Minimum Frequency	Maximum Frequency
		267 MHz	1226 MHz
Operator			
Version	Edited by <b>Ejvind Hansen</b>		Date <b>11-07-2018</b>
Size	Project <b>5011406_006D3</b>		Sheet Id:15/No:15, 15/16
AND Version 4.12, Serial No. 14000-1-LP for: <b>Dansk Kabel TV Teglholmegade 1 DK - 0900 København C</b>			Sheet name Trævæg under loft



14 - Vestervej 70

STV Ø



Antenna Installation/Network		Minimum Frequency	Maximum Frequency
		267 MHz	1226 MHz
Operator			
Version	Edited by <b>Ejvind Hansen</b>		Date <b>11-07-2018</b>
Size	Project <b>5011406_006D3</b>		Sheet Id:16/No:16, 16/16
AND Version 4.12, Serial No. 14000-1-LP for: Dansk Kabel TV Teglholmegade 1 DK - 0900 København C			Sheet name <b>STV Ø</b>