

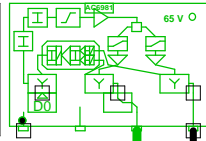
5011406_009D3 - 2 - Sønderhøj 44

77437

5011406_009D3.01

AC 3210

285,00: 84,5
762,00: 81,4
985,00: 80,1
1140,00: 79,3
1200,00: 79,1
CNR: 450,00: 49,5 dB
RL: 83,8



285,00: 100,4
762,00: 105,9
985,00: 107,9
1140,00: 109,3
1200,00: 109,8
CNR: 450,00: 49,2 dB
RL: 72,0

285,00: 99,8
762,00: 102,8
985,00: 103,9
1140,00: 104,6
1200,00: 104,9
CNR: 450,00: 49,2 dB
RL: 71,0

RP: 1,77 A, 43,0 V

AC6110

SIT 1-12

RP: 0,77 A, 43,0 V

117 m kabel K6 ind

0m - TELASS-1.1/7.3

0m - TELASS-1.1/7.3

0m - TELASS-1.1/7.3

3 - Sønderhøj 23

4 - Sønderhøj 46

6 - Sønderhøj 44

1

2

3

Forstærkerliste 5011406_009D3-2

5011406_009D3.01 (77437) / AC 3210		
A1	100,2	110,0
A2	99,7	105,0
ALSC-mode AC3210	AGC module	
AC3x10 D0-mode	Output mode	Equ: 7 dB
AC3210 Returvej		
AC 3210ret.indgang	Out2 Optimi	RV: 0 dB
R2dB	Modem Opt	RPad: 2 dB
AC 3210ret.indgang	Out1 Optimi	RV: 0 dB
R1dB	Modem Opt	RPad: 1 dB
CXF204		
CXF204, 2x		
AC6120		
AC6981		

Antenna Installation/Network

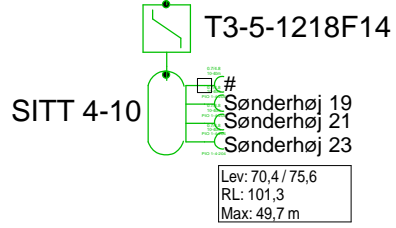
Operator

Version	Edited by Ejvind Hansen	Date 11-09-2018
---------	-----------------------------------	---------------------------

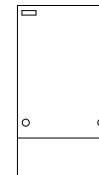
Size	Project 5011406_009D3	Sheet Id:2/No:2, 2/9
------	---------------------------------	-------------------------

AND Version 4.12, Serial No. 14000-1-LP for: Dansk Kabel TV Tegholmegade 1 DK - 0900 København C	Sheet name 5011406_009D
--	-----------------------------------

0m - TELASS-1.1/7.3



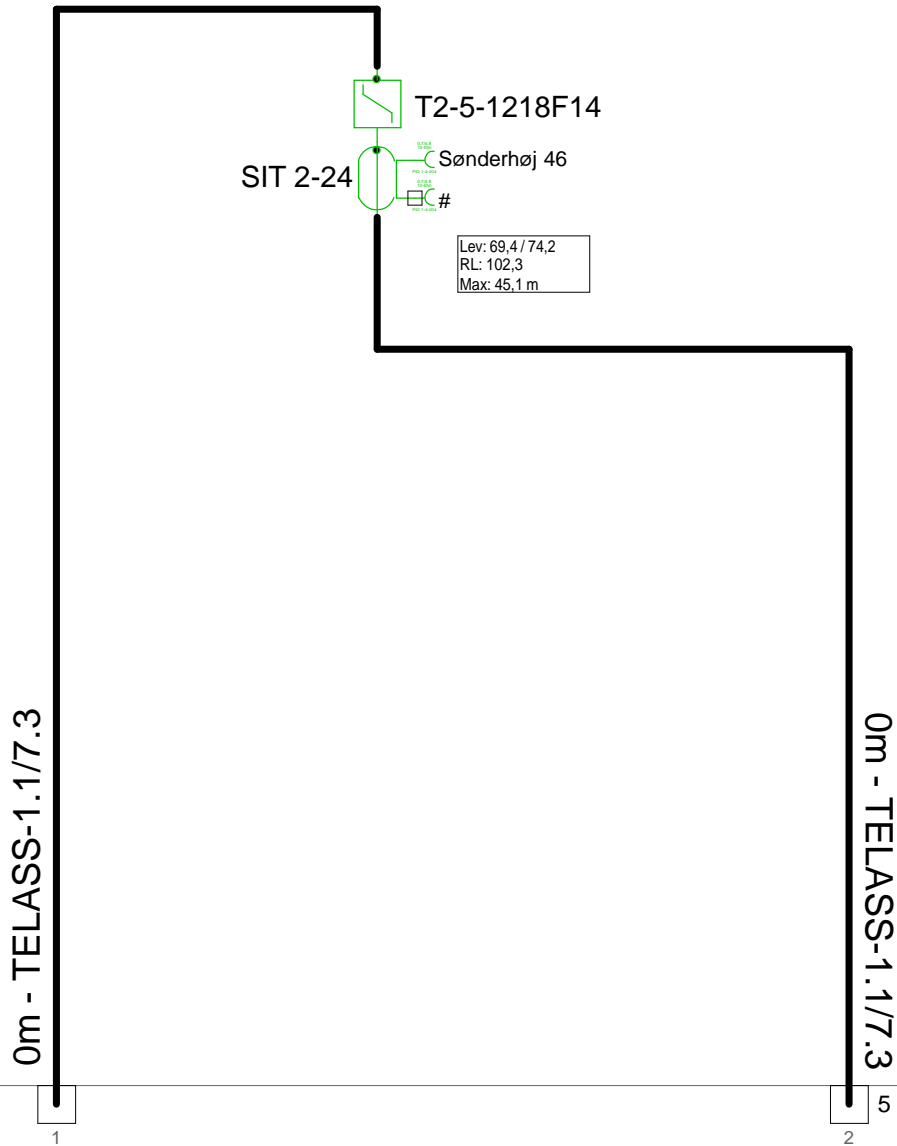
F.TV.2 grøn



2 - Sønderhøj 44

Antenna Installation/Network		Minimum Frequency	Maximum Frequency
		267 MHz	1226 MHz
Operator			
Version	Edited by Ejvind Hansen		Date 11-09-2018
Size	Project 5011406_009D3		Sheet Id:3/No:3, 3/9
AND Version 4.12, Serial No. 14000-1-LP for: Dansk Kabel TV Tegholmegade 1 DK - 0900 København C			Sheet name F.TV.2 grøn

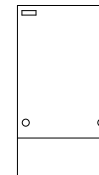
5011406_009D3 - 4 - Sønderhøj 46



2 - Sønderhøj 44

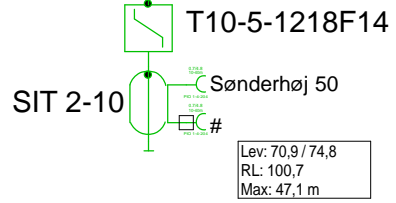
5 - Sønderhøj 50

F.TV.2 grøn

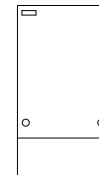


Antenna Installation/Network		Minimum Frequency	Maximum Frequency
		267 MHz	1226 MHz
Operator			
Version	Edited by Ejvind Hansen		Date 11-09-2018
Size	Project 5011406_009D3		Sheet Id:4/No:4, 4/9
AND Version 4.12, Serial No. 14000-1-LP for: Dansk Kabel TV Tegholmegade 1 DK - 0900 København C			Sheet name F.TV.2 grøn

0m - TELASS-1.1/7.3



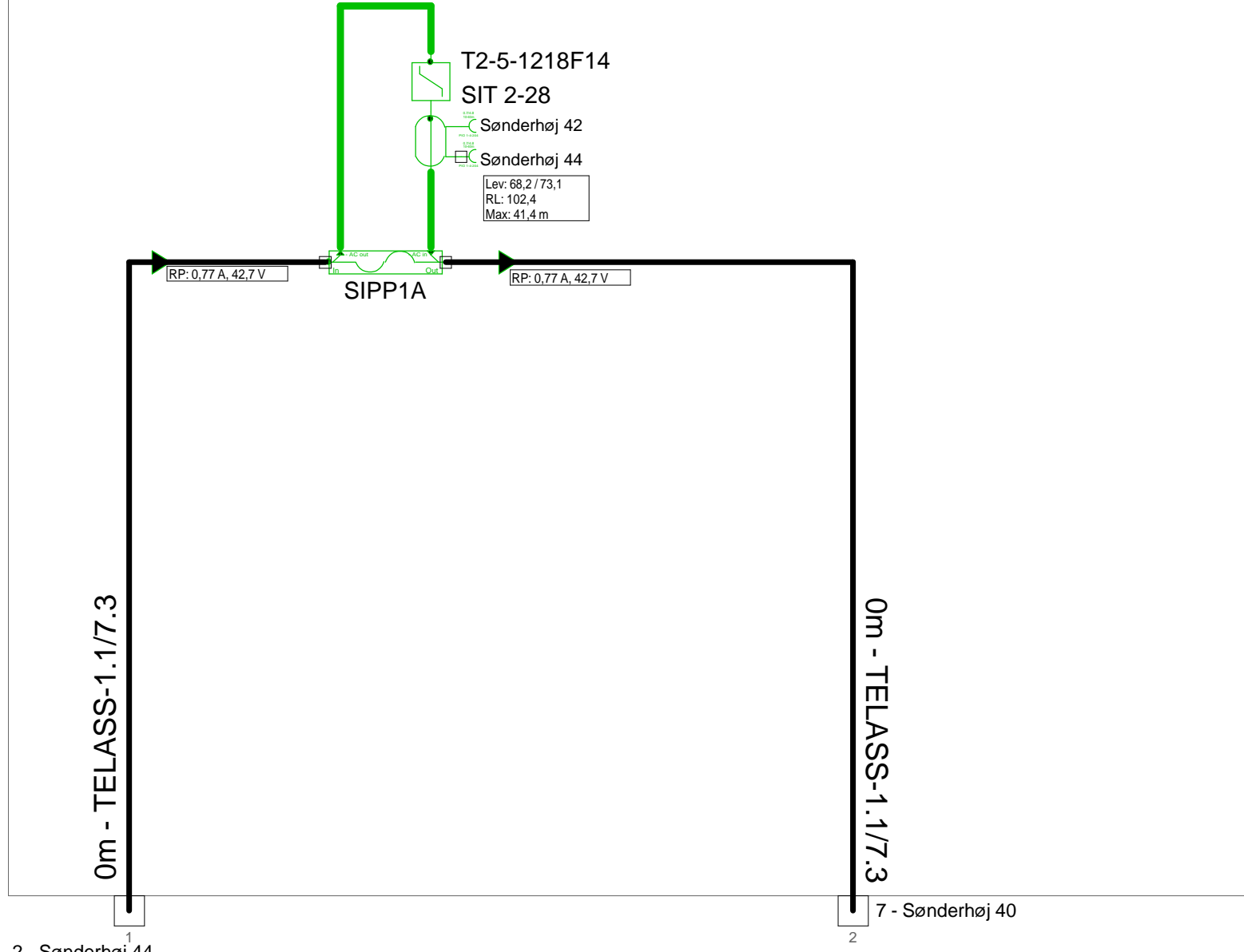
F.TV.2 grøn



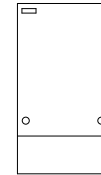
4 - Sønderhøj 46

Antenna Installation/Network		Minimum Frequency	Maximum Frequency
		267 MHz	1226 MHz
Operator			
Version	Edited by Ejvind Hansen		Date 11-09-2018
Size	Project 5011406_009D3		Sheet Id:5/No:5, 5/9
AND Version 4.12, Serial No. 14000-1-LP for: Dansk Kabel TV Tegholmegade 1 DK - 0900 København C			Sheet name F.TV.2 grøn

5011406_009D3 - 6 - Sønderhøj 44



KSAØ 301204

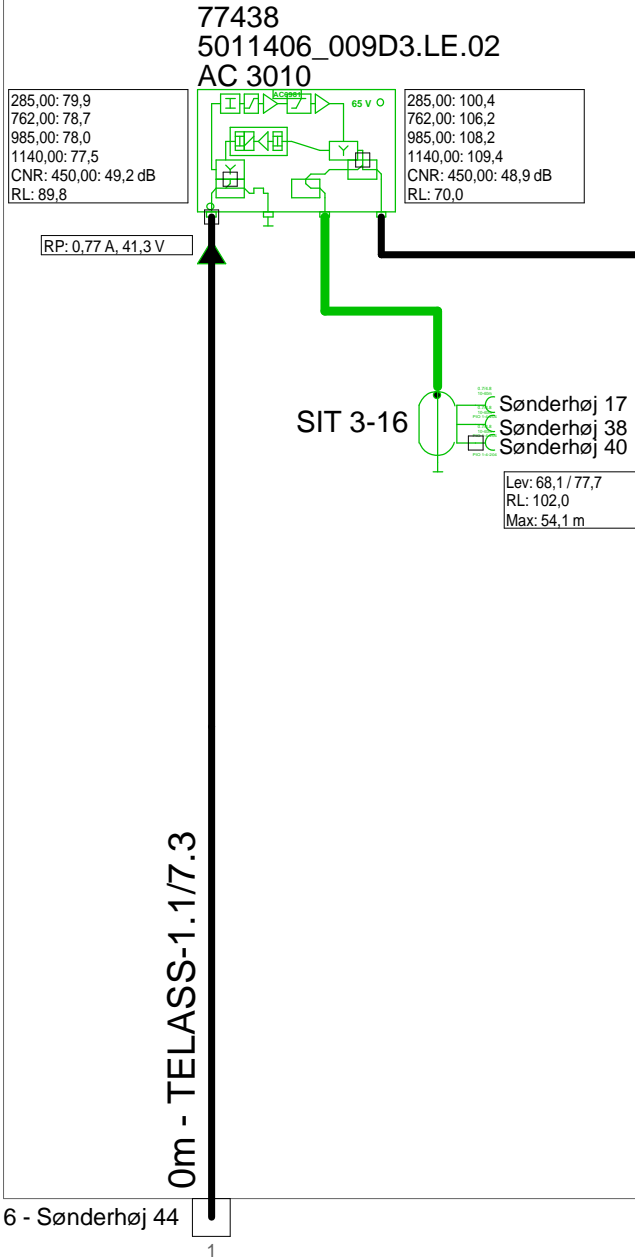


1
2 - Sønderhøj 44

2
7 - Sønderhøj 40

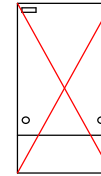
Antenna Installation/Network		Minimum Frequency	Maximum Frequency
		267 MHz	1226 MHz
Operator			
Version	Edited by Ejvind Hansen		Date 11-09-2018
Size	Project 5011406_009D3		Sheet Id:6/No:6, 6/9
AND Version 4.12, Serial No. 14000-1-LP for: Dansk Kabel TV Teglholmegade 1 DK - 0900 København C			Sheet name KSAØ 3012

5011406_009D3 - 7 - Sønderhøj 40

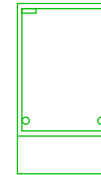


Forstærkerliste 5011406_009D3-7		
5011406_009D3.LE.02 / AC 3010		
A1	100,2	110,0
ALSC-mode AC(E)3x	AGC modu	
AC3x10 D3-mode	Output m	Equ: 13 dB
AC3010 204MHz Returvej		
AC3010-28dB-returin	Modem op	RV: 28 dB
R00	P1	RPad: 0 dB
AC6113		
CXF204		
CXF204		
AC6115		
AC6981		
AC6120		

KSAØ 301204



KSAØ 302109 GL
KS3021VSP-AL



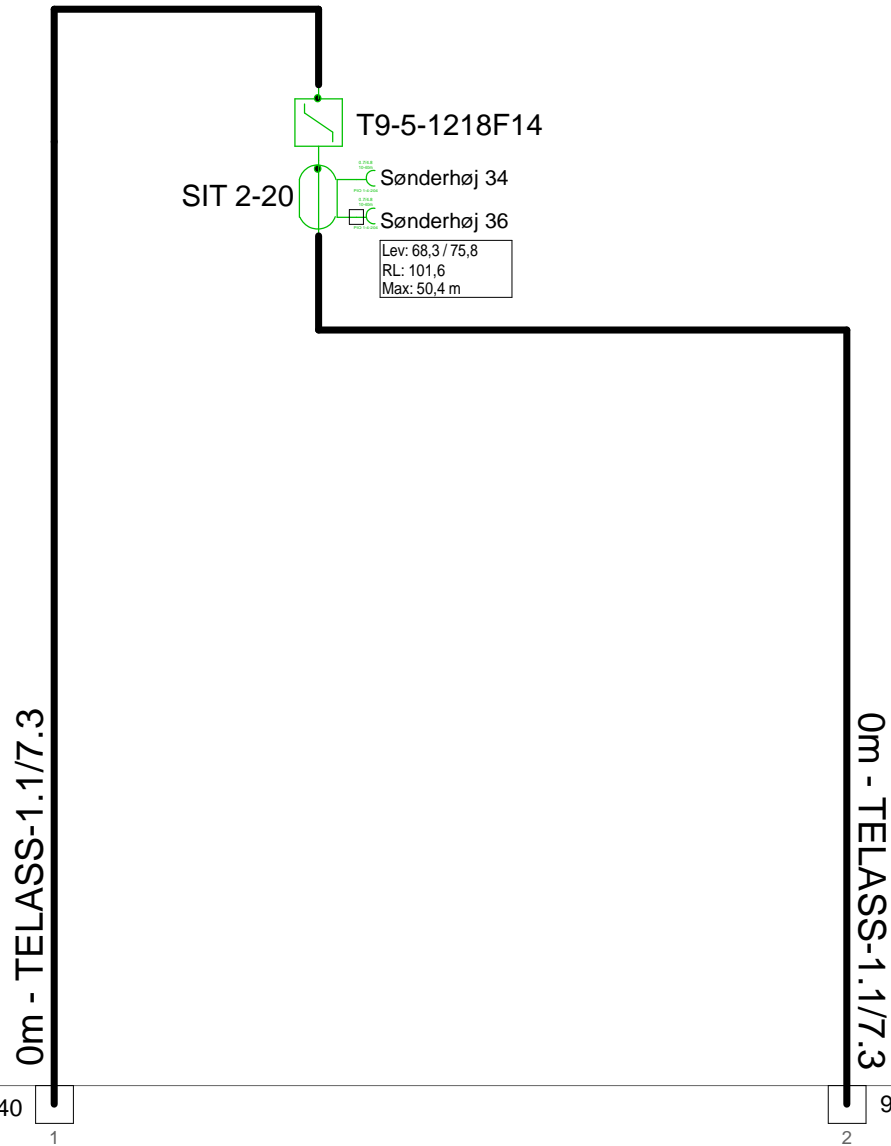
6 - Sønderhøj 44

1

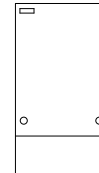
8 - Sønderhøj 36

2

Antenna Installation/Network		Minimum Frequency	Maximum Frequency
		267 MHz	1226 MHz
Operator			
Version	Edited by Ejvind Hansen		Date 11-09-2018
Size	Project 5011406_009D3		Sheet Id:7/No:7, 7/9
AND Version 4.12, Serial No. 14000-1-LP for: Dansk Kabel TV Tegholmegade 1 DK - 0900 København C			Sheet name



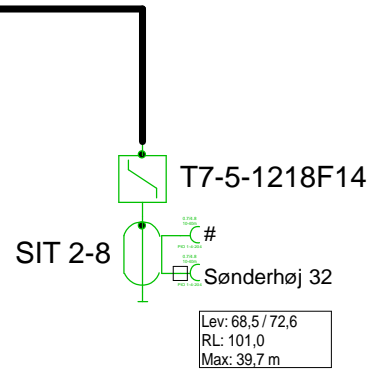
KSAØ 301509



7 - Sønderhøj 40

9 - Sønderhøj 32

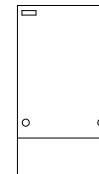
<i>Antenna Installation/Network</i>		<i>Minimum Frequency</i>	<i>Maximum Frequency</i>
		267 MHz	1226 MHz
<i>Operator</i>			
<i>Version</i>	<i>Edited by</i> Ejvind Hansen		<i>Date</i> 11-09-2018
<i>Size</i>	<i>Project</i> 5011406_009D3		<i>Sheet</i> Id:8/No:8, 8/9
<i>AND Version 4.12, Serial No. 14000-1-LP for:</i> Dansk Kabel TV Teglholmegade 1 DK - 0900 København C			<i>Sheet name</i> KSAØ 3015



0m - TELASS-1.1/7.3

8 - Sønderhøj 36 1

F.TV.2 grøn



Antenna Installation/Network		Minimum Frequency	Maximum Frequency
		267 MHz	1226 MHz
Operator			
Version	Edited by Ejvind Hansen		Date 11-09-2018
Size	Project 5011406_009D3		Sheet Id:9/No:9, 9/9
AND Version 4.12, Serial No. 14000-1-LP for: Dansk Kabel TV Tegholmegade 1 DK - 0900 København C			Sheet name F.TV.2 grøn