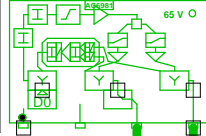


5011406_010D3 - 2 - Sønderhøj 16

77439
5011406_010D3.05
AC 3210

285,00: 79,8
762,00: 79,7
985,00: 79,8
1140,00: 79,9
1200,00: 80,0
CNR: 450,00: 49,5 dB
RL: 89,2



285,00: 100,4
762,00: 105,7
985,00: 107,8
1140,00: 109,2
1200,00: 109,8
CNR: 450,00: 49,0 dB
RL: 70,2

285,00: 99,8
762,00: 102,6
985,00: 103,7
1140,00: 104,5
1200,00: 104,9
CNR: 450,00: 49,0 dB
RL: 77,2

RP: 2,00 A, 43,9 V

AC6115

ACP3 P1 F1300

SIT 1-12

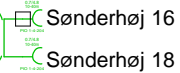
RP: 1,03 A, 43,9 V

PIM-1-13

RP: 0,75 A, 43,8 V

RP: 0,28 A, 43,9 V

SIT 2-20



Lev: 68,0/77,7
RL: 102,4
Max: 53,1 m

Telass L3 i sløjfe

0m - TELASS-1.1/7.3

0m - TELASS-1.1/7.3

0m - TELASS-1.1/7.3

1 5 - Sønderhøj 9

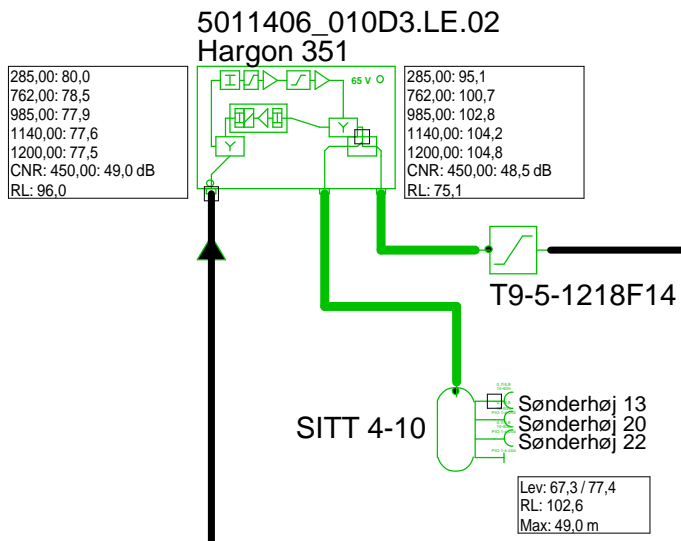
2 3 - Sønderhøj 20

3 6 - Sønderhøj 12

Forstærkerliste 5011406_010D3-2		
5011406_010D3.05 (77439) / AC 3210		
A1	100,2	110,0
A2	99,7	105,0
TXS004	Input Equali	Equ: -4 dB
ALSC-mode AC3210	AGC module	
AC3x10 D0-mode	Output mode	Equ: 7 dB
AC3210 Returvej		
AC 3210ret.indgang	Out2 Optimi	RV: 0 dB
R0dB	Modem Opt	RPad: 0 dB
AC 3210ret.indgang	Out1 Optimi	RV: 0 dB
R7dB	Modem Opt	RPad: 7 dB
CXF204		
CXF204, 2x		
AC6120		
AC6981		

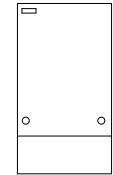
Antenna Installation/Network		
Operator		
Version	Edited by Ejvind Hansen	Date 11-09-2018
Size	Project 5011406_010D3	Sheet Id:2/No:2, 2/9
AND Version 4.12, Serial No. 14000-1-LP for: Dansk Kabel TV Tegholmegade 1 DK - 0900 København C		Sheet name 5011406_010D

5011406_010D3 - 3 - Sønderhøj 20



Forstærkerliste 5011406_010D3-3		
5011406_010D3.LE.02 / Hargon 351		
A1	94,9	105,0
EQ10dB 1218MHz	Input equ/att	Equ: 10 dB
AT1dB	Attenuator	Pad: 1 dB
CS1218-6T	Equalizer	Equ: -7 dB
AT4dB	Interstage a	Pad: 4 dB
EQ13dB 1218MHz	Interstage	Equ: 13 dB
Vector returvej		
Vector returvej 204MHz	Modem opt	RV: 26 dB
AT5dB	Attenuator	RPad: 5 dB
Vector returvejs udg.re	Upstream r	RV: 0 dB
AT0dB	Attenuator	RPad: 0 dB
EQ 5dB 204MHz	Equalizer	REqu: 5 dB
Filter ind 204MHz retur		
Filter ud 204MHz retur		
TO17T		

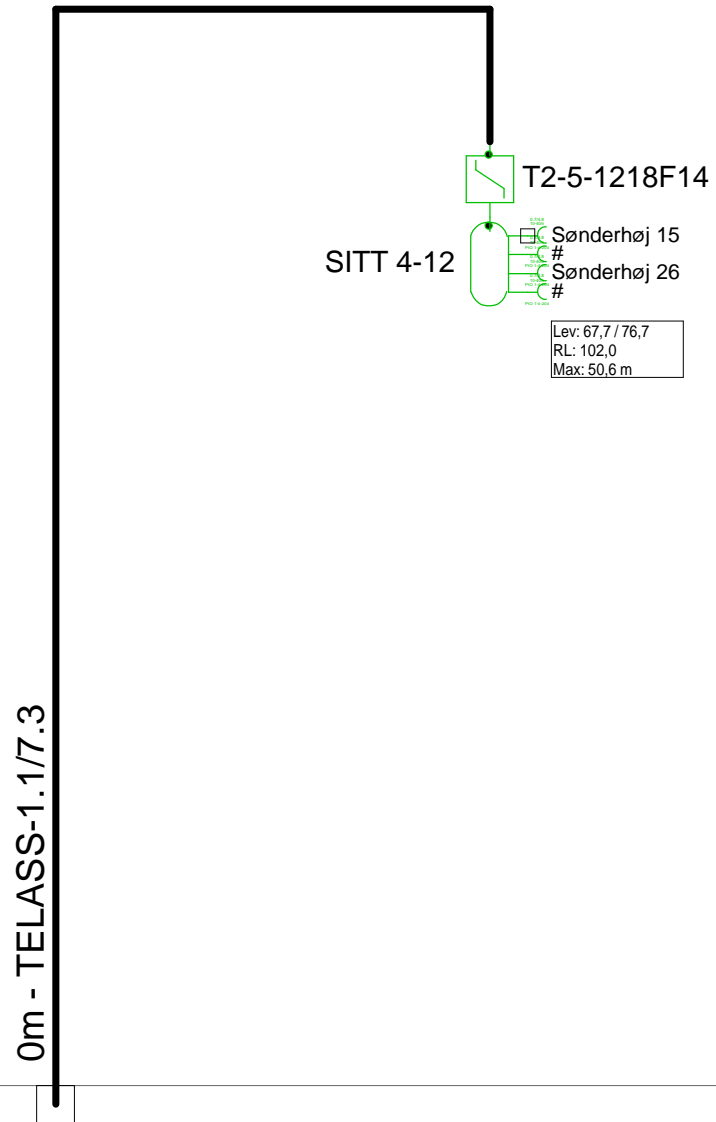
KSAØ 301509



2 - Sønderhøj 16

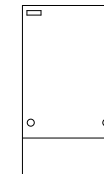
4 - Sønderhøj 24

Antenna Installation/Network		Minimum Frequency	Maximum Frequency
		267 MHz	1226 MHz
Operator			
Version	Edited by Ejvind Hansen		Date 11-09-2018
Size	Project 5011406_010D3		Sheet Id:3/No:3, 3/9
AND Version 4.12, Serial No. 14000-1-LP for: Dansk Kabel TV Tegholmegade 1 DK - 0900 København C			Sheet name KSAØ 301509\5011406_010D3



3 - Sønderhøj 20

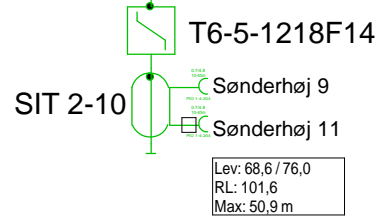
F.TV.2 grøn



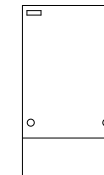
Antenna Installation/Network		Minimum Frequency	Maximum Frequency
		267 MHz	1226 MHz
Operator			
Version	Edited by Ejvind Hansen		Date 11-09-2018
Size	Project 5011406_010D3		Sheet Id:4/No:4, 4/9
AND Version 4.12, Serial No. 14000-1-LP for: Dansk Kabel TV Tegholmegade 1 DK - 0900 København C			Sheet name F.TV.2 grøn

5011406_010D3 - 5 - Sønderhøj 9

0m - TELASS-1.1/7.3



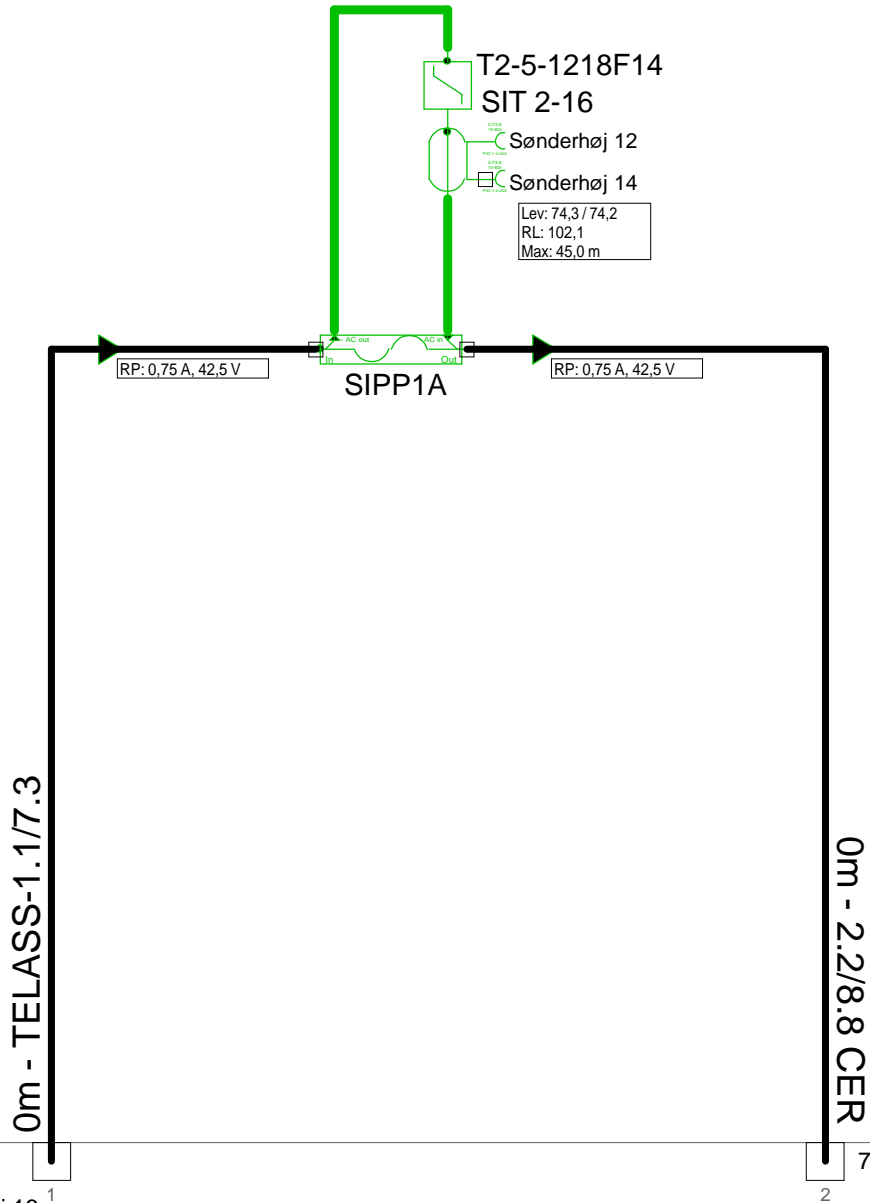
F.TV.2 grøn



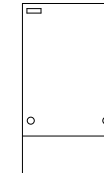
2 - Sønderhøj 16

Antenna Installation/Network		Minimum Frequency	Maximum Frequency
		267 MHz	1226 MHz
Operator			
Version	Edited by Ejvind Hansen		Date 11-09-2018
Size	Project 5011406_010D3		Sheet Id:5/No:5, 5/9
AND Version 4.12, Serial No. 14000-1-LP for: Dansk Kabel TV Tegholmegade 1 DK - 0900 København C			Sheet name F.TV.2 grøn

5011406_010D3 - 6 - Sønderhøj 12



F.TV.2 grøn



2 - Sønderhøj 16 ¹

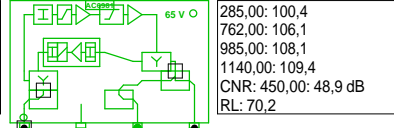
7 - Sønderhøj 10 ²

Antenna Installation/Network		Minimum Frequency	Maximum Frequency
		267 MHz	1226 MHz
Operator			
Version	Edited by Ejvind Hansen		Date 11-09-2018
Size	Project 5011406_010D3		Sheet Id:6/No:6, 6/9
AND Version 4.12, Serial No. 14000-1-LP for: Dansk Kabel TV Tegholmegade 1 DK - 0900 København C			Sheet name F.TV.2 grøn

5011406_010D3 - 7 - Sønderhøj 8

77440
5011406_010D3.LE.01
AC 3010

285,00: 86,6
762,00: 84,8
985,00: 84,0
1140,00: 83,4
CNR: 450,00: 49,0 dB
RL: 89,3



285,00: 100,4
762,00: 106,1
985,00: 108,1
1140,00: 109,4
CNR: 450,00: 48,9 dB
RL: 70,2

RP: 0,75 A, 42,2 V

SIT 2-16
Sønderhøj 10

Lev: 67,9 / 77,5
RL: 102,5
Max: 52,9 m

0m - 2.2/8.8 CER

0m - TELASS-1.1/7.3

6 - Sønderhøj 12

1

8 - Sønderhøj 6

2

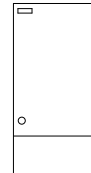
Forstærkerliste 5011406_010D3-7

5011406_010D3.LE.01 / AC 3010		
A1	100,2	110,0
ALSC-mode AC(E)3xxx	AGC modu	
AC3x10 D3-mode	Output mo	Equ: 13 dB
AC3010 204MHz Returvej		
AC3010-28dB-returin	Modem opt	RV: 28 dB
R00	P1	RPad: 0 dB
AC6110		
CXF204		
CXF204		
AC6115		
AC6981		
AC6120		

Gællelåge Isættes

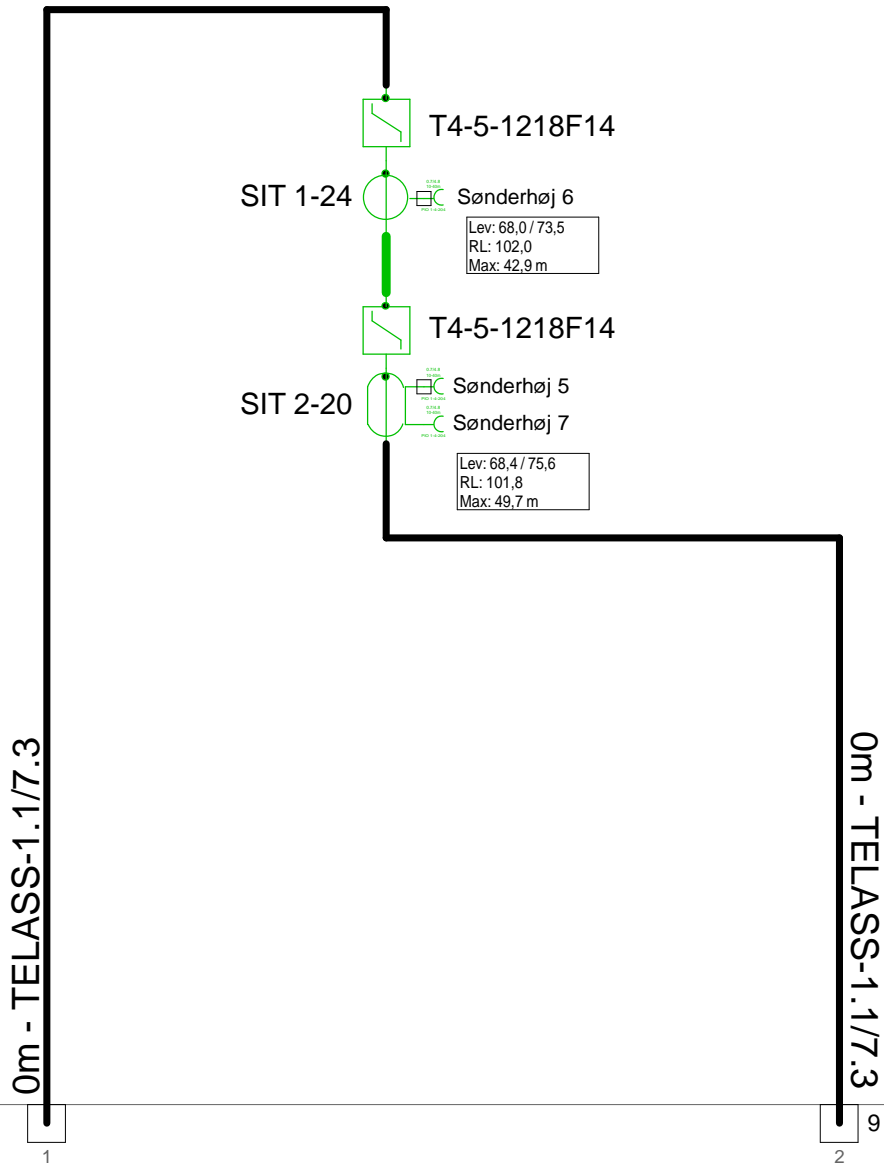


KSAØ 301509



Antenna Installation/Network		Minimum Frequency	Maximum Frequency
		267 MHz	1226 MHz
Operator			
Version	Edited by Ejvind Hansen		Date 11-09-2018
Size	Project 5011406_010D3		Sheet Id:7/No:7, 7/9
AND Version 4.12, Serial No. 14000-1-LP for: Dansk Kabel TV Tegholmegade 1 DK - 0900 København C			Sheet name KSAØ 301509\5011406_010D3

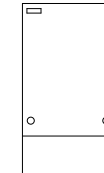
5011406_010D3 - 8 - Sønderhøj 6



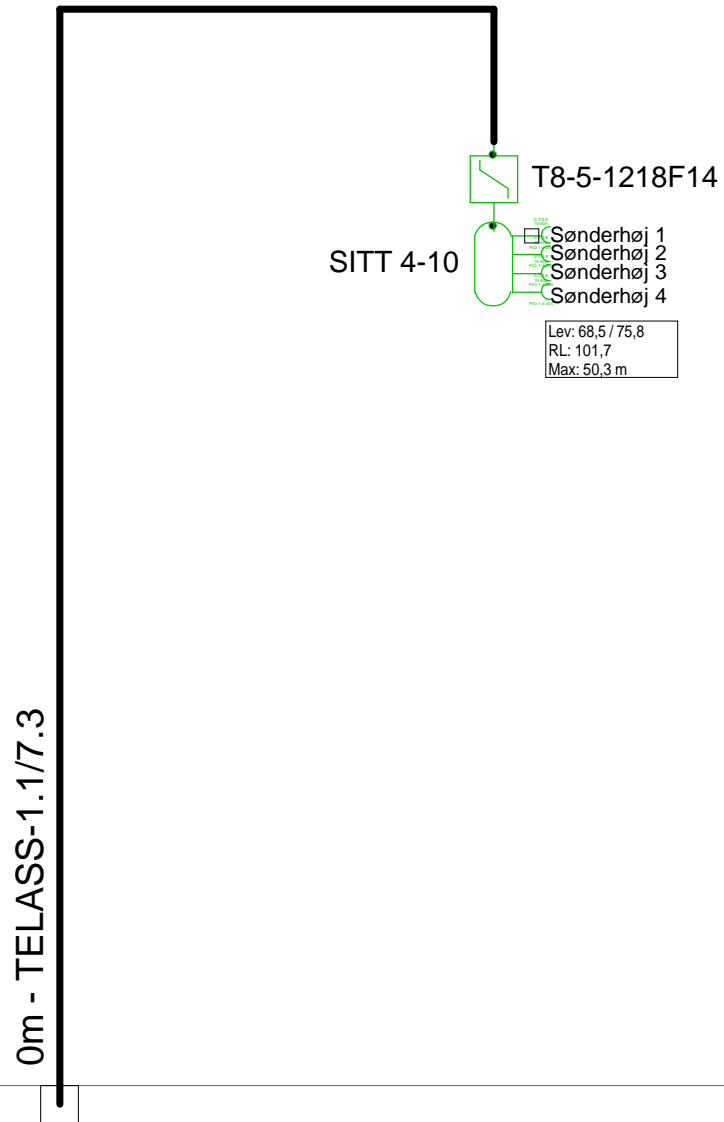
7 - Sønderhøj 10

9 - Sønderhøj 3

F.TV.2 grøn

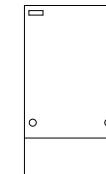


Antenna Installation/Network		Minimum Frequency	Maximum Frequency
		267 MHz	1226 MHz
Operator			
Version	Edited by Ejvind Hansen		Date 11-09-2018
Size	Project 5011406_010D3		Sheet Id:8/No:8, 8/9
AND Version 4.12, Serial No. 14000-1-LP for: Dansk Kabel TV Tegholmegade 1 DK - 0900 København C			Sheet name F.TV.2 grøn



8 - Sønderhøj 6

F.TV.2 grøn



Antenna Installation/Network		Minimum Frequency	Maximum Frequency
		267 MHz	1226 MHz
Operator			
Version	Edited by Ejvind Hansen		Date 11-09-2018
Size	Project 5011406_010D3		Sheet Id:9/No:9, 9/9
AND Version 4.12, Serial No. 14000-1-LP for: Dansk Kabel TV Tegholmegade 1 DK - 0900 København C			Sheet name F.TV.2 grøn