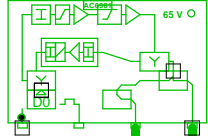


5011406_011D3 - 2 - Maglemose 36

77441
5011406_011D3.01
AC 3010

285,00: 84,0
762,00: 82,4
985,00: 82,0
1140,00: 81,9
CNR: 450,00: 49,3 dB
RL: 84,7



285,00: 99,8
762,00: 102,4
985,00: 103,6
1140,00: 104,5
CNR: 450,00: 49,2 dB
RL: 70,1

RP: 1,77 A, 43,5 V

AC6110

ACP3 P1 F1300

RP: 1,04 A, 43,5 V



RP: 0,28 A, 43,4 V

PIM-1-13

SIT 1-20 Maglemose 34

Lev: 70,7 / 76,0
RL: 99,1
Max: 50,9 m

0m - TELASS-1.1/7.3

0m - TELASS-1.1/7.3

0m - CT 33 S

3 - Maglemose 17

8 - Maglemose 32

4 - Maglemose 38

3

2

1

Forstærkerliste 5011406_011D3-2

5011406_011D3.01 (77441) / AC 3010

A1		
A2	99,8	105,0
ALSC-mode AC(E)3xxx	AGC module	
AC3x10 D0-mode	Output mode	Equ: 7 dB
AC3010 204MHz Returvej		
AC3010-28dB-returin	Modem opt	RV: 28 dB
R00	P1	RPad: 0 dB
CXF204		
CXF204		
AC6113		
AC6981		
AC6120		

Antenna Installation/Network

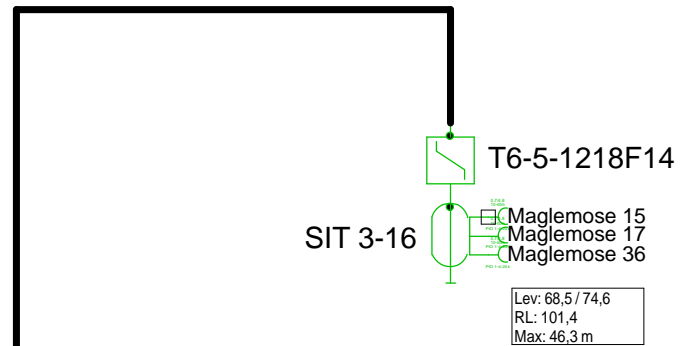
Operator

Version	Edited by Ejvind Hansen	Date 11-09-2018
---------	-----------------------------------	---------------------------

Size	Project 5011406_011D3	Sheet Id:2/No:2, 2/11
------	---------------------------------	--------------------------

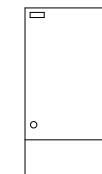
AND Version 4.12, Serial No. 14000-1-LP for: Dansk Kabel TV Tegholmegade 1 DK - 0900 København C	Sheet name 5011406_011D
--	-----------------------------------

0m - TELASS-1.1/7.3



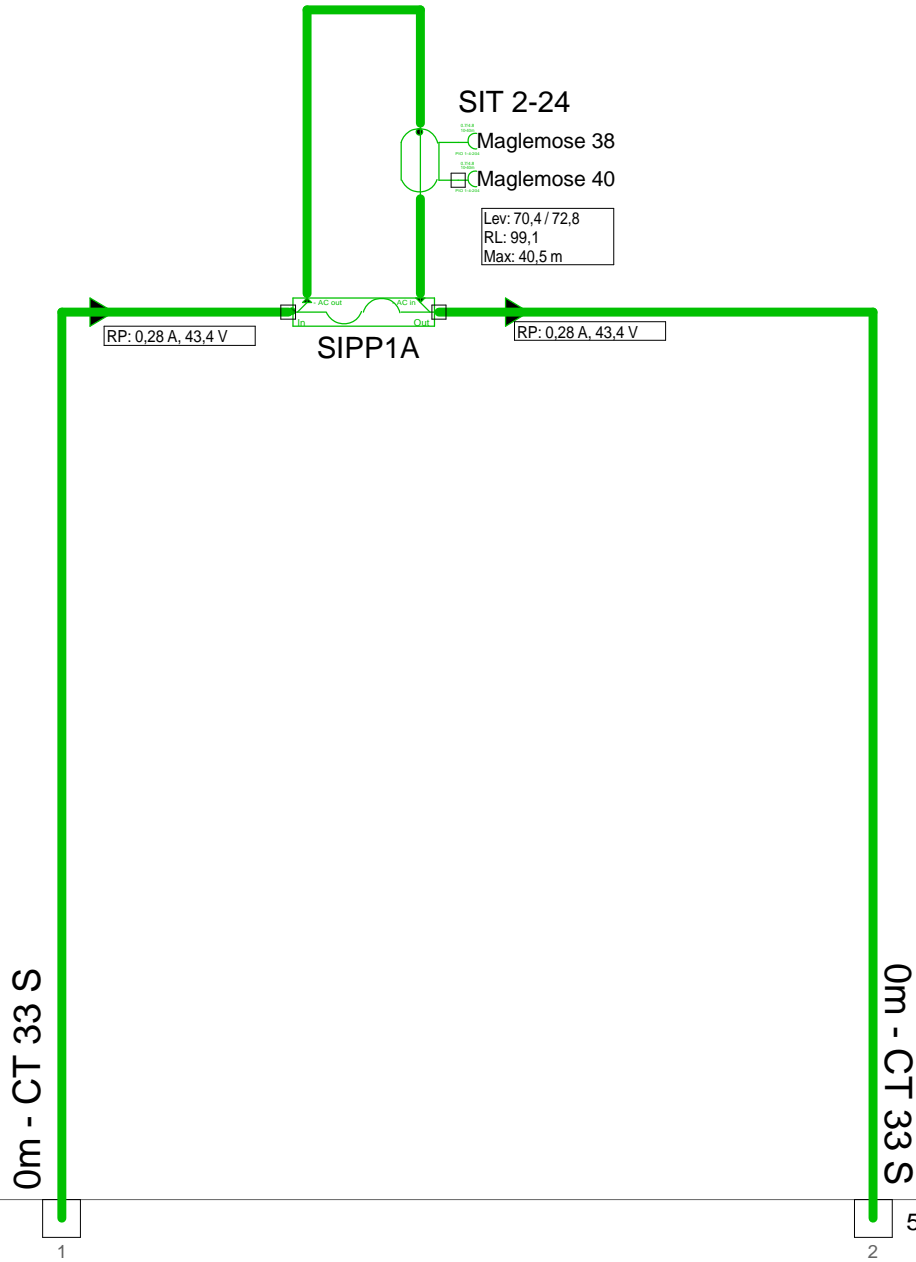
2 - Maglemose 36

F.TV.2 grøn



Antenna Installation/Network		Minimum Frequency	Maximum Frequency
		267 MHz	1226 MHz
Operator			
Version	Edited by Ejvind Hansen		Date 11-09-2018
Size	Project 5011406_011D3		Sheet Id:3/No:3, 3/11
AND Version 4.12, Serial No. 14000-1-LP for: Dansk Kabel TV Tegholmegade 1 DK - 0900 København C			Sheet name F.TV.2 grøn

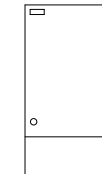
5011406_011D3 - 4 - Maglemose 38



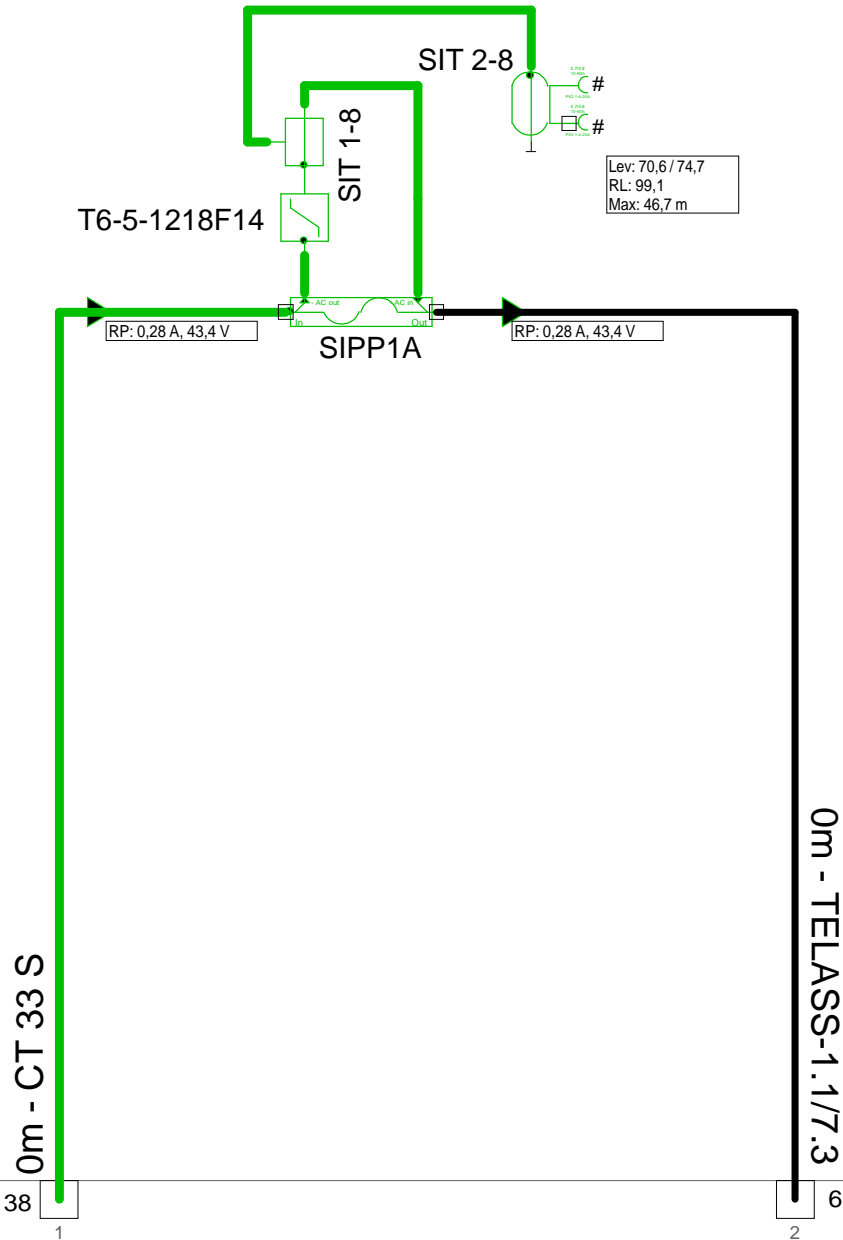
2 - Maglemose 36

5 - Maglemose 17

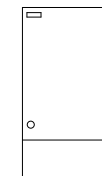
KSAØ 301204



Antenna Installation/Network		Minimum Frequency	Maximum Frequency
		267 MHz	1226 MHz
Operator			
Version	Edited by Ejvind Hansen		Date 11-09-2018
Size	Project 5011406_011D3		Sheet Id:4/No:4, 4/11
AND Version 4.12, Serial No. 14000-1-LP for: Dansk Kabel TV Teglholmsgade 1 DK - 0900 København C			Sheet name KSAØ 3012



KSAØ 301204

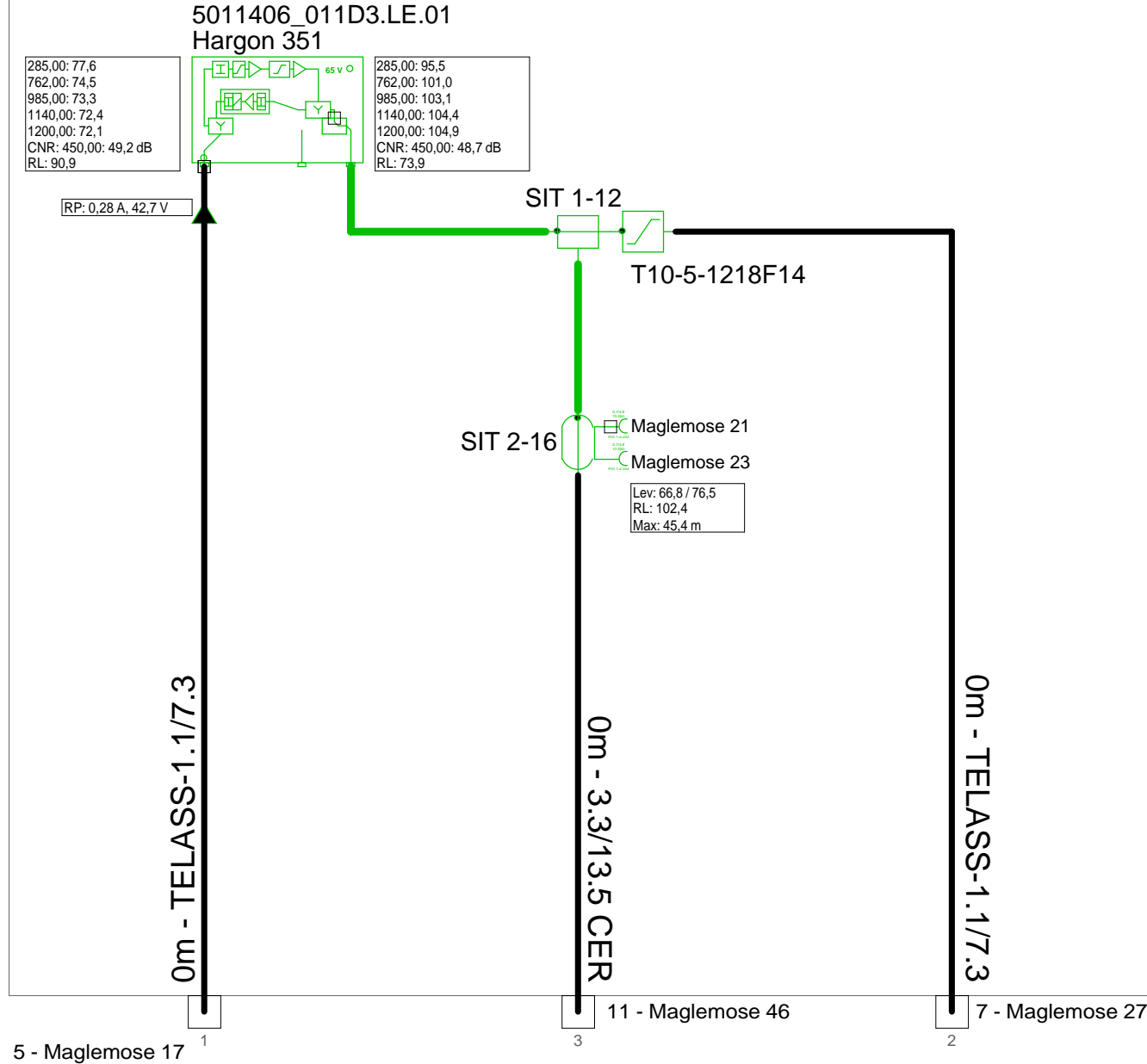


4 - Maglemose 38
1

6 - Maglemose 23
2

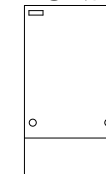
Antenna Installation/Network		Minimum Frequency	Maximum Frequency
		267 MHz	1226 MHz
Operator			
Version	Edited by Ejvind Hansen		Date 11-09-2018
Size	Project 5011406_011D3		Sheet Id:5/No:5, 5/11
AND Version 4.12, Serial No. 14000-1-LP for: Dansk Kabel TV Tegholmegade 1 DK - 0900 København C			Sheet name KSAØ 3012

5011406_011D3 - 6 - Maglemose 23

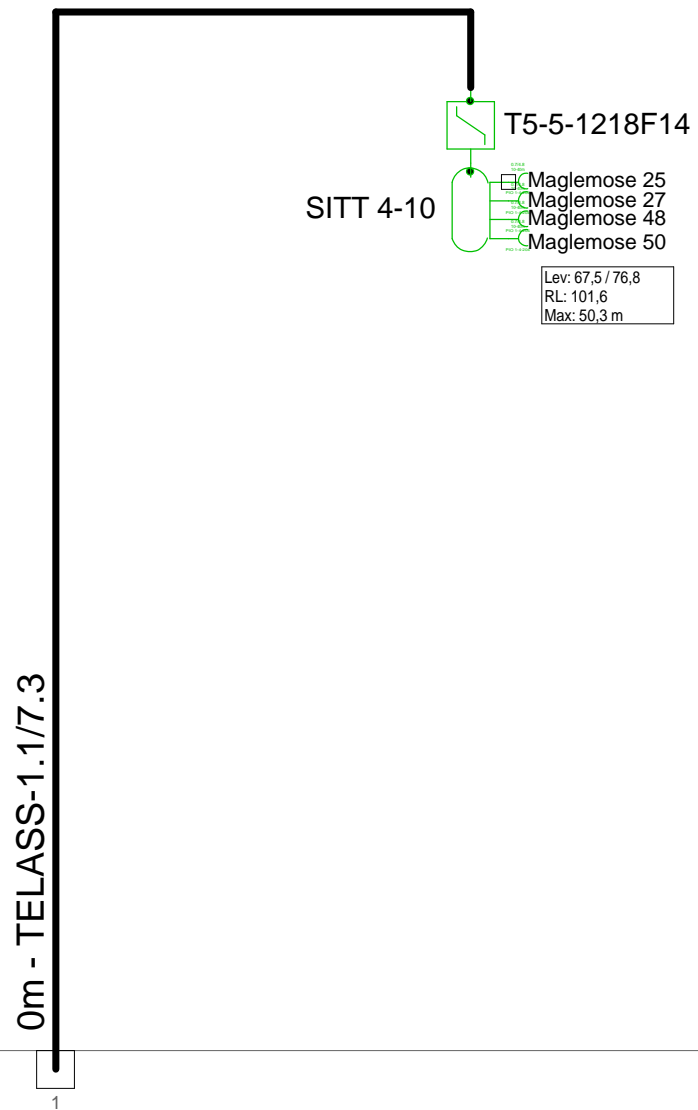


Forstærkerliste 5011406_011D3-6		
5011406_011D3.LE.01 / Hargon 351		
A1	95,3	105,1
EQ7dB 1218MHz	Input equ/	Equ: 7 dB
AT2dB	Attenuator	Pad: 2 dB
EQ0dB 1218MHz	Equalizer	Equ: 0 dB
AT4dB	Interstage	Pad: 4 dB
EQ13dB 1218MHz	Interstage	Equ: 13 dB
Vector returnvej		
Vector returnvej 204	Modem op	RV: 26 dB
AT4dB	Attenuator	RPad: 4 dB
Vector returnvejs udg.	Upstream	RV: 0 dB
AT5dB	Attenuator	RPad: 5 dB
EQ 5dB 204MHz	Equalizer	REqu: 5 dB
Filter ind 204MHz retur		
Filter ud 204MHz retur		
ATG 0		

KSAØ 301509

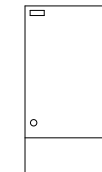


Antenna Installation/Network		Minimum Frequency	Maximum Frequency
		267 MHz	1226 MHz
Operator			
Version	Edited by Ejvind Hansen		Date 11-09-2018
Size	Project 5011406_011D3		Sheet Id:6/No:6, 6/11
AND Version 4.12, Serial No. 14000-1-LP for: Dansk Kabel TV Tegholmegade 1 DK - 0900 København C			Sheet name KSAØ 301509\5011406_011D3



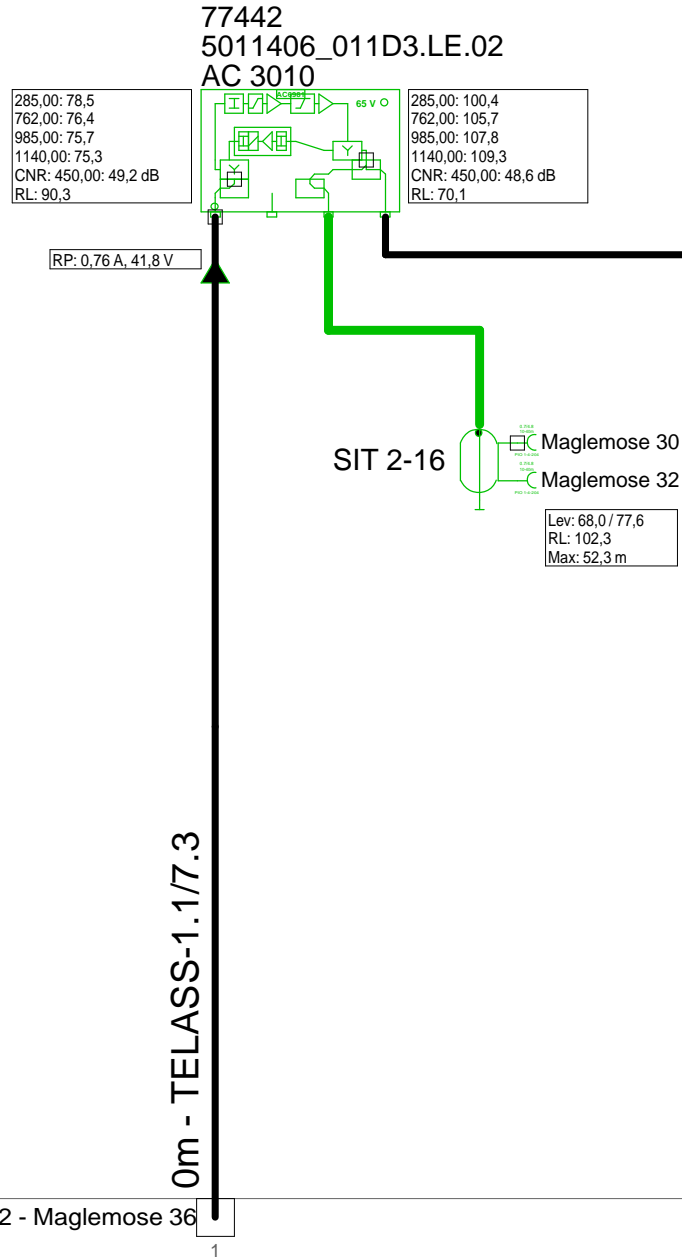
6 - Maglemose 23

F.TV.2 grøn



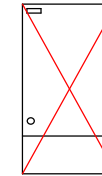
Antenna Installation/Network		Minimum Frequency	Maximum Frequency
		267 MHz	1226 MHz
Operator			
Version	Edited by Ejvind Hansen		Date 11-09-2018
Size	Project 5011406_011D3		Sheet Id:7/No:7, 7/11
AND Version 4.12, Serial No. 14000-1-LP for: Dansk Kabel TV Tegholmegade 1 DK - 0900 København C			Sheet name F.TV.2 grøn

5011406_011D3 - 8 - Maglemose 32

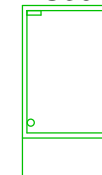


Forstærkerliste 5011406_011D3-8		
5011406_011D3.LE.02 / AC 3010		
A1	100,2	110,0
ALSC-mode AC(E)3x	AGC modu	
AC3x10 D3-mode	Output m	Equ: 13 dB
AC3010 204MHz Returvej		
AC3010-28dB-returin	Modem op	RV: 28 dB
R00	P1	RPad: 0 dB
AC6110		
CXF204		
CXF204		
AC6115		
AC6981		
AC6120		

KSAØ 301204



KSAØ 302109 GL
KS3021VSP-AL

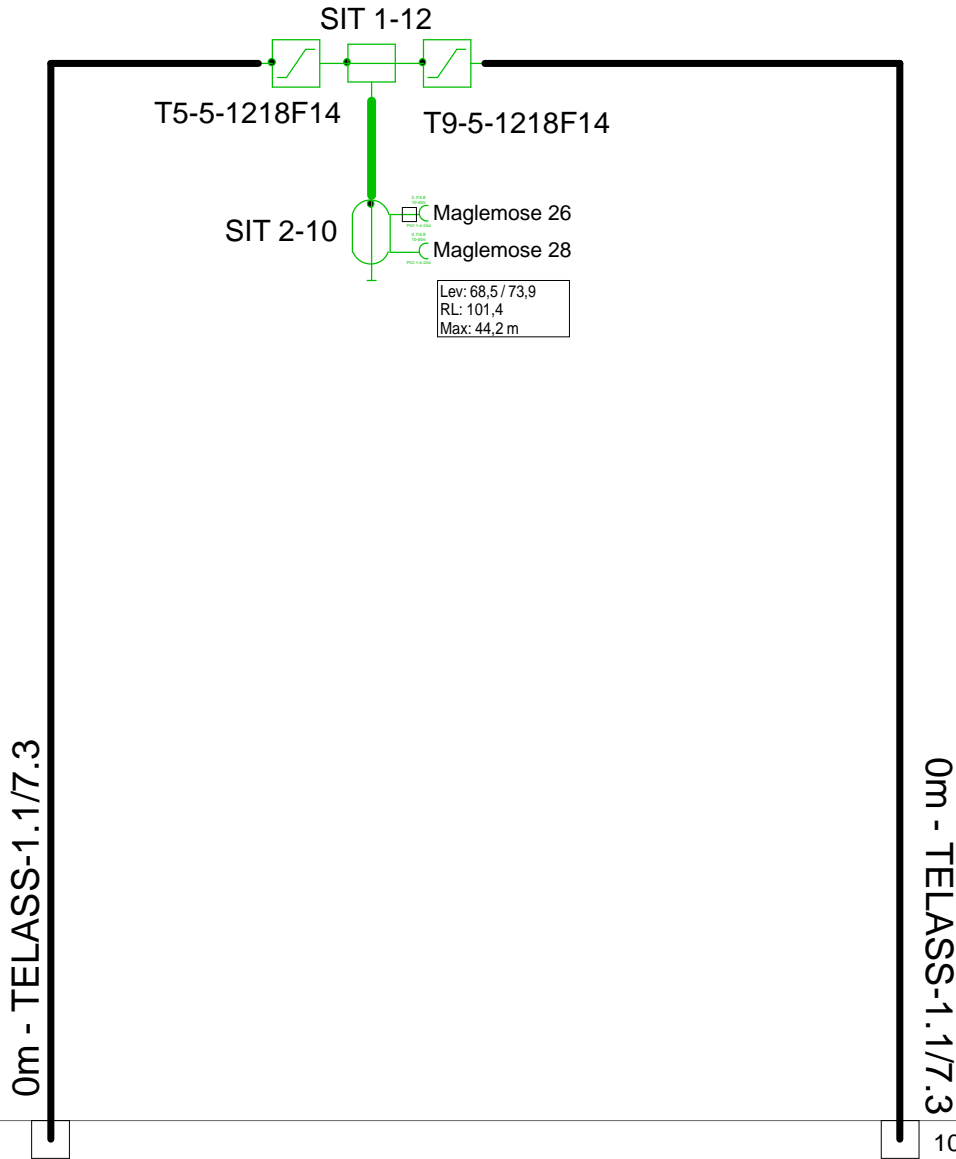


2 - Maglemose 36

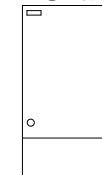
9 - Maglemose 28

Antenna Installation/Network	Minimum Frequency	Maximum Frequency
	267 MHz	1226 MHz
Operator		
Version	Edited by Ejvind Hansen	Date 11-09-2018
Size	Project 5011406_011D3	Sheet Id:8/No:8, 8/11
AND Version 4.12, Serial No. 14000-1-LP for: Dansk Kabel TV Tegholmegade 1 DK - 0900 København C		Sheet name KSAØ 301204-modul, tilKSAØ 302

5011406_011D3 - 9 - Maglemose 28



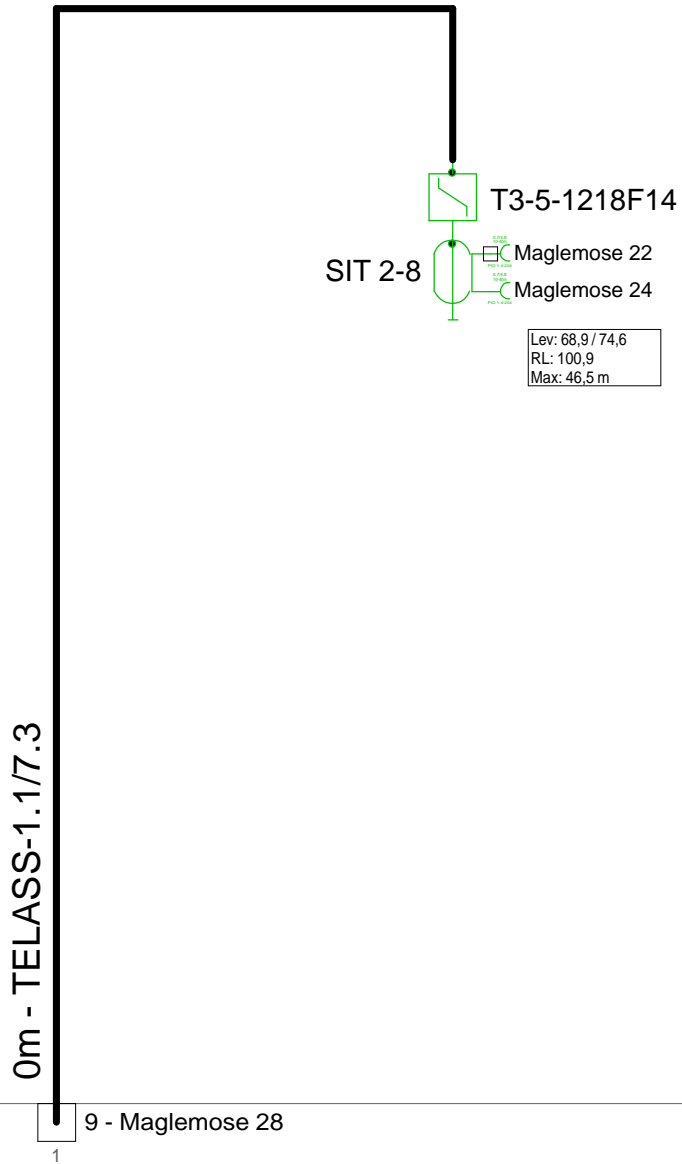
KSAØ 301509



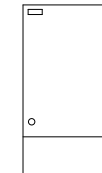
8 - Maglemose 32

10 - Maglemose 24

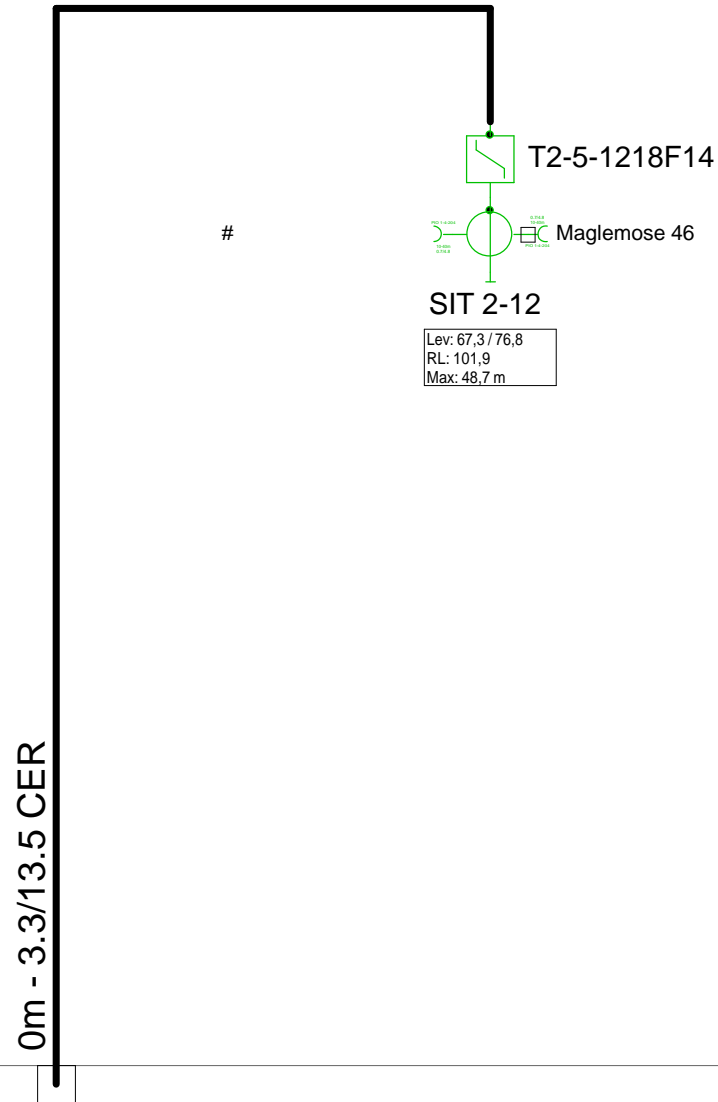
Antenna Installation/Network		Minimum Frequency	Maximum Frequency
		267 MHz	1226 MHz
Operator			
Version	Edited by Ejvind Hansen		Date 11-09-2018
Size	Project 5011406_011D3		Sheet Id:9/No:9, 9/11
AND Version 4.12, Serial No. 14000-1-LP for: Dansk Kabel TV Tegholmegade 1 DK - 0900 København C			Sheet name KSAØ 3015



F.TV.2 grøn

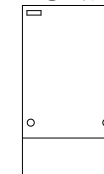


Antenna Installation/Network		Minimum Frequency	Maximum Frequency
		267 MHz	1226 MHz
Operator			
Version	Edited by Ejvind Hansen		Date 11-09-2018
Size	Project 5011406_011D3		Sheet Id:10/No:10, 10/11
AND Version 4.12, Serial No. 14000-1-LP for: Dansk Kabel TV Tegholmegade 1 DK - 0900 København C			Sheet name F.TV.2 grøn



6 - Maglemose 23 ¹

KSAØ 301509



Antenna Installation/Network		Minimum Frequency	Maximum Frequency
		267 MHz	1226 MHz
Operator			
Version	Edited by Ejvind Hansen		Date 11-09-2018
Size	Project 5011406_011D3		Sheet Id:11/No:11, 11/11
AND Version 4.12, Serial No. 14000-1-LP for: Dansk Kabel TV Teglholmegade 1 DK - 0900 København C			Sheet name KSAØ 3015