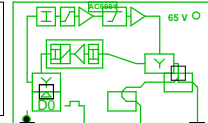


# 5011406\_013D3 - 2 - Nødebjerg 2/Maribovej 20

77446  
5011406\_013D3.06  
AC 3010

285,00: 85,6  
762,00: 84,9  
985,00: 83,7  
1140,00: 82,9  
CNR: 1218,00: 48,8 dB  
RL: 82,3



285,00: 99,9  
762,00: 103,8  
985,00: 104,3  
1140,00: 104,7  
CNR: 1218,00: 48,7 dB  
RL: 74,9

RP: 1,54 A, 44,3 V

AC6110

ACP3 P1 F1300

PS3F1300-02

RP: 0,82 A, 44,3 V



RP: 0,55 A, 44,3 V

PIM-1-13



RP: 0,27 A, 44,3 V

RP: 0,27 A, 44,3 V

RP: 0,27 A, 44,3 V

0m - TELASS 1.8/11.5

0m - TELASS 1.8/11.5

0m - TELASS 1.8/11.5

0m - TELASS 1.8/11.5

3 - Maribovej 20

4 - Nødebjerg 4A

6 - Nødebjerg 1

5 - Nødebjerg 27

4

3

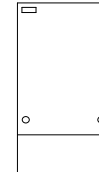
1

2

## Forstærkerliste 5011406\_013D3-2

5011406_013D3.06 (77446) / AC 3010		
A1		
A2	99,7	105,0
ALSC-mode AC(E)3xxx	AGC module	
AC3x10 D0-mode	Output mode	Equ: 7 dB
AC3010 204MHz Returvej		
AC3010-28dB-returin	Modem opt	RV: 28 dB
R05	P1	RPad: 5 dB
CXF204		
CXF204		
AC6113		
AC6981		
AC6120		

KSAØ 423612A



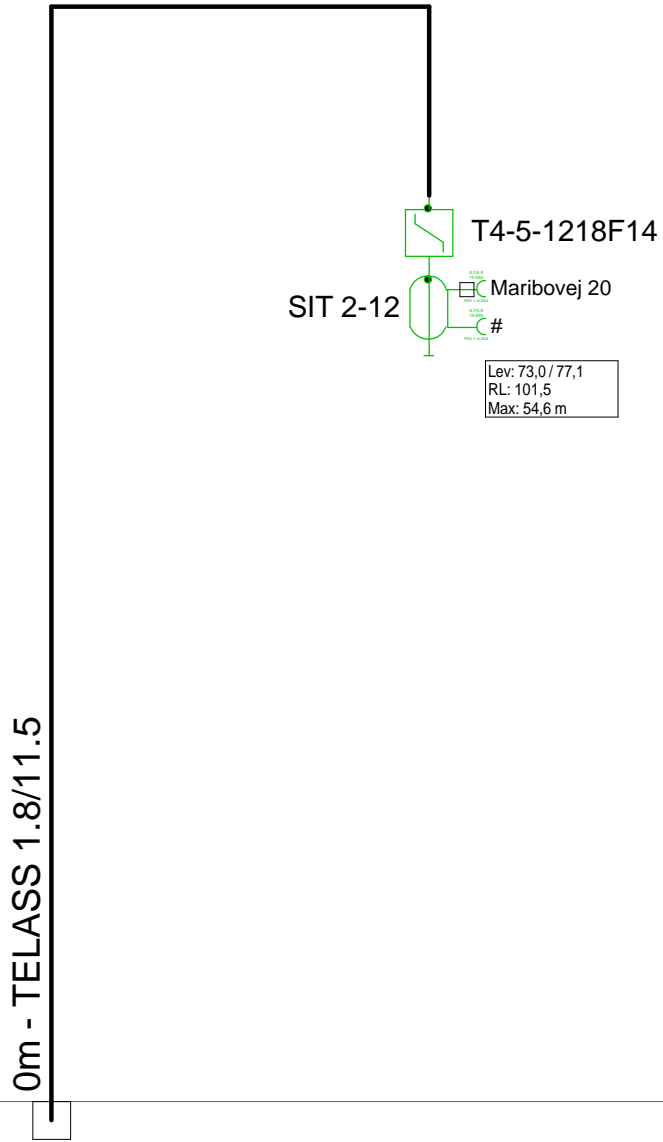
Antenna Installation/Network

Operator

Version	Edited by <b>Ejvind Hansen</b>	Date <b>14-09-2018</b>
---------	-----------------------------------	---------------------------

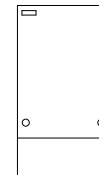
Size	Project <b>5011406_013D3</b>	Sheet Id:2/No:2, 2/16
------	---------------------------------	--------------------------

AND Version 4.12, Serial No. 14000-1-LP for: Dansk Kabel TV Tegholmegade 1 DK - 0900 København C	Sheet name <b>5011406_013D</b>
---	-----------------------------------



2 - Nødebjerg 2

F.TV.2 grøn

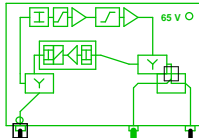


Antenna Installation/Network		Minimum Frequency	Maximum Frequency
		267 MHz	1226 MHz
Operator			
Version	Edited by <b>Ejvind Hansen</b>		Date <b>14-09-2018</b>
Size	Project <b>5011406_013D3</b>		Sheet Id:3/No:3, 3/16
AND Version 4.12, Serial No. 14000-1-LP for: Dansk Kabel TV Teglgolmsgade 1 DK - 0900 København C			Sheet name <b>F.TV.2 grøn</b>

# 5011406\_013D3 - 4 - Nødebjerg 4A

5011406\_013D3.LE.01  
Hargon 351

285,00: 81,6  
762,00: 82,6  
985,00: 82,0  
1140,00: 81,6  
1200,00: 81,5  
CNR: 1218,00: 48,7 dB  
RL: 92,6



285,00: 95,5  
762,00: 102,0  
985,00: 103,5  
1140,00: 104,4  
1200,00: 104,9  
CNR: 1218,00: 48,3 dB  
RL: 74,6

RP: 0,27 A, 44,1 V

SITT 4-12



Lev: 67,9 / 77,6  
RL: 102,0  
Max: 53,3 m

0m - TELASS 1.8/11.5

0m - TELASS 1.8/11.5

2 - Nødebjerg 2

1

11 - Nødebjerg 6

2

## Forstærkerliste 5011406\_013D3-4

5011406_013D3.LE.01 / Hargon 351		
A1	95,2	105,0
AT0dB	Input equ/att	Pad: 0 dB
AT12dB	Attenuator	Pad: 12 dB
EQ0dB 1218MHz	Equalizer	Equ: 0 dB
AT4dB	Interstage at	Pad: 4 dB
EQ13dB 1218MHz	Interstage e	Equ: 13 dB
Vector returvej		
Vector returvej 204MHz	Modem opt	RV: 26 dB
AT5dB	Attenuator	RPad: 5 dB
Vector returvejs udg.reg	Upstream r	RV: 0 dB
AT3dB	Attenuator	RPad: 3 dB
EQ 3dB 204MHz	Equalizer	REqu: 3 dB
Filter ind 204MHz retur		
Filter ud 204MHz retur		
TO15T		

KSAØ 301509



Antenna Installation/Network

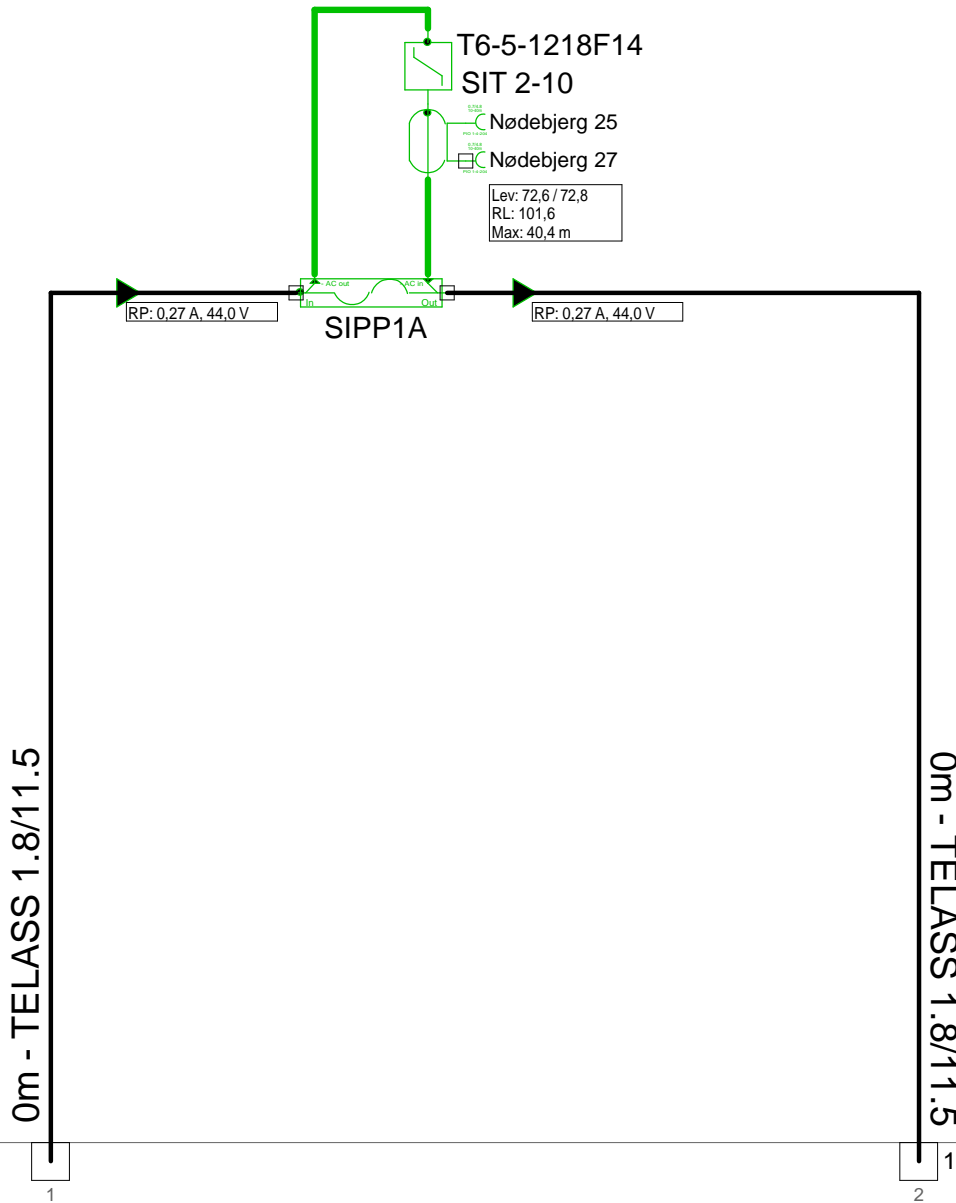
Operator

Version	Edited by <b>Ejvind Hansen</b>	Date <b>14-09-2018</b>
---------	-----------------------------------	---------------------------

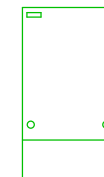
Size	Project <b>5011406_013D3</b>	Sheet Id:4/No:4, 4/16
------	---------------------------------	--------------------------

AND Version 4.12, Serial No. 14000-1-LP for: <b>Dansk Kabel TV Tegholmmsgade 1 DK - 0900 København C</b>	Sheet name KSAØ 301509/5011406_013D3
---	---

5011406\_013D3 - 5 - Nødebjerg 27

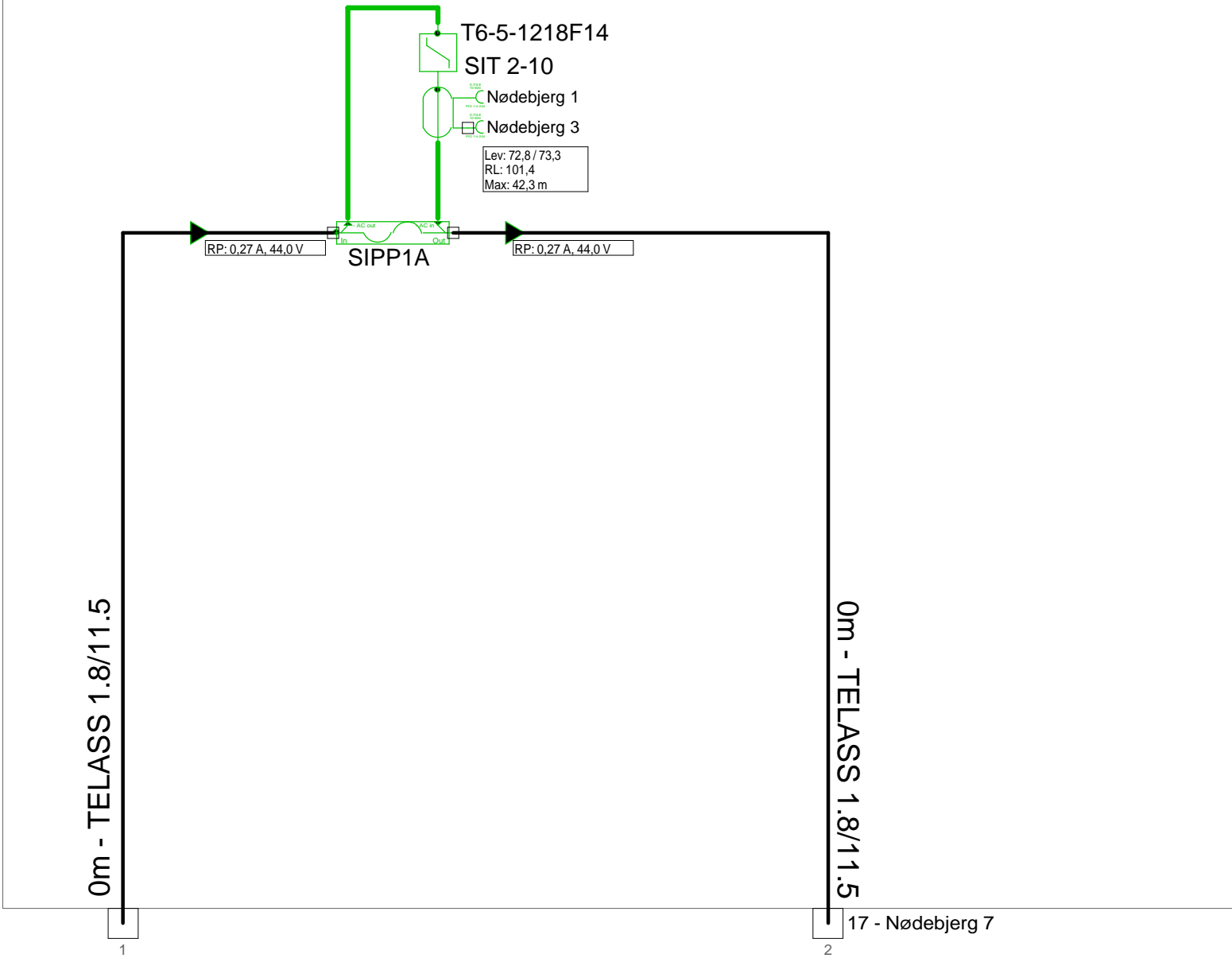


F.TV.2 grøn



Antenna Installation/Network		Minimum Frequency	Maximum Frequency
		267 MHz	1226 MHz
Operator			
Version	Edited by <b>Ejvind Hansen</b>		Date <b>14-09-2018</b>
Size	Project <b>5011406_013D3</b>		Sheet Id:5/No:5, 5/16
AND Version 4.12, Serial No. 14000-1-LP for: Dansk Kabel TV Tegholmegade 1 DK - 0900 København C			Sheet name <b>F.TV.2 grøn</b>

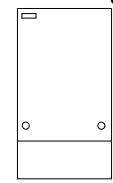
# 5011406\_013D3 - 6 - Nødebjerg 1



2 - Nødebjerg 2

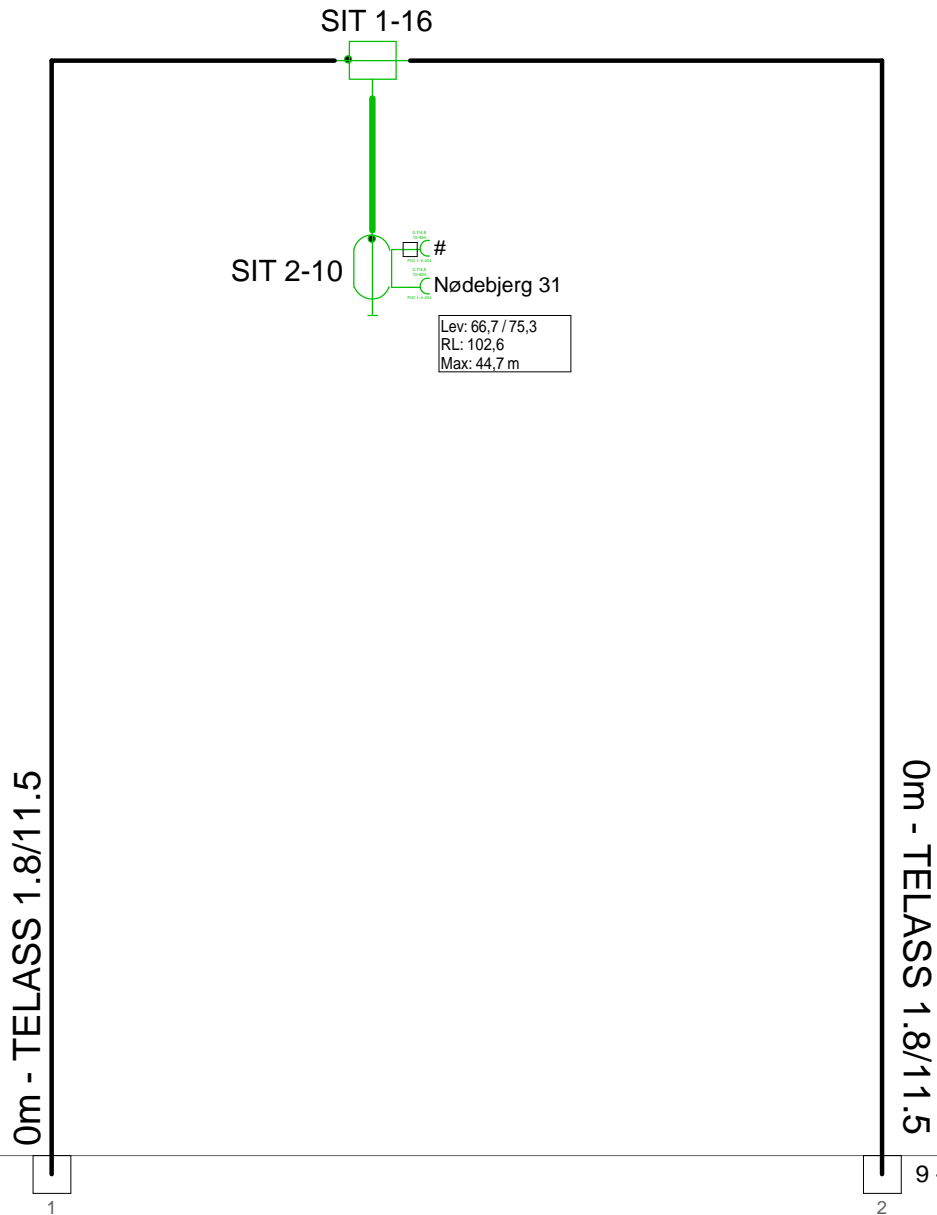
17 - Nødebjerg 7

F.TV.2 grøn

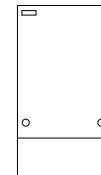


Antenna Installation/Network		Minimum Frequency	Maximum Frequency
		267 MHz	1226 MHz
Operator			
Version	Edited by <b>Ejvind Hansen</b>		Date <b>14-09-2018</b>
Size	Project <b>5011406_013D3</b>		Sheet Id:6/No:6, 6/16
AND Version 4.12, Serial No. 14000-1-LP for: Dansk Kabel TV Teglholmegade 1 DK - 0900 København C			Sheet name <b>F.TV.2 grøn</b>

5011406\_013D3 - 8 - Nødebjerg 31

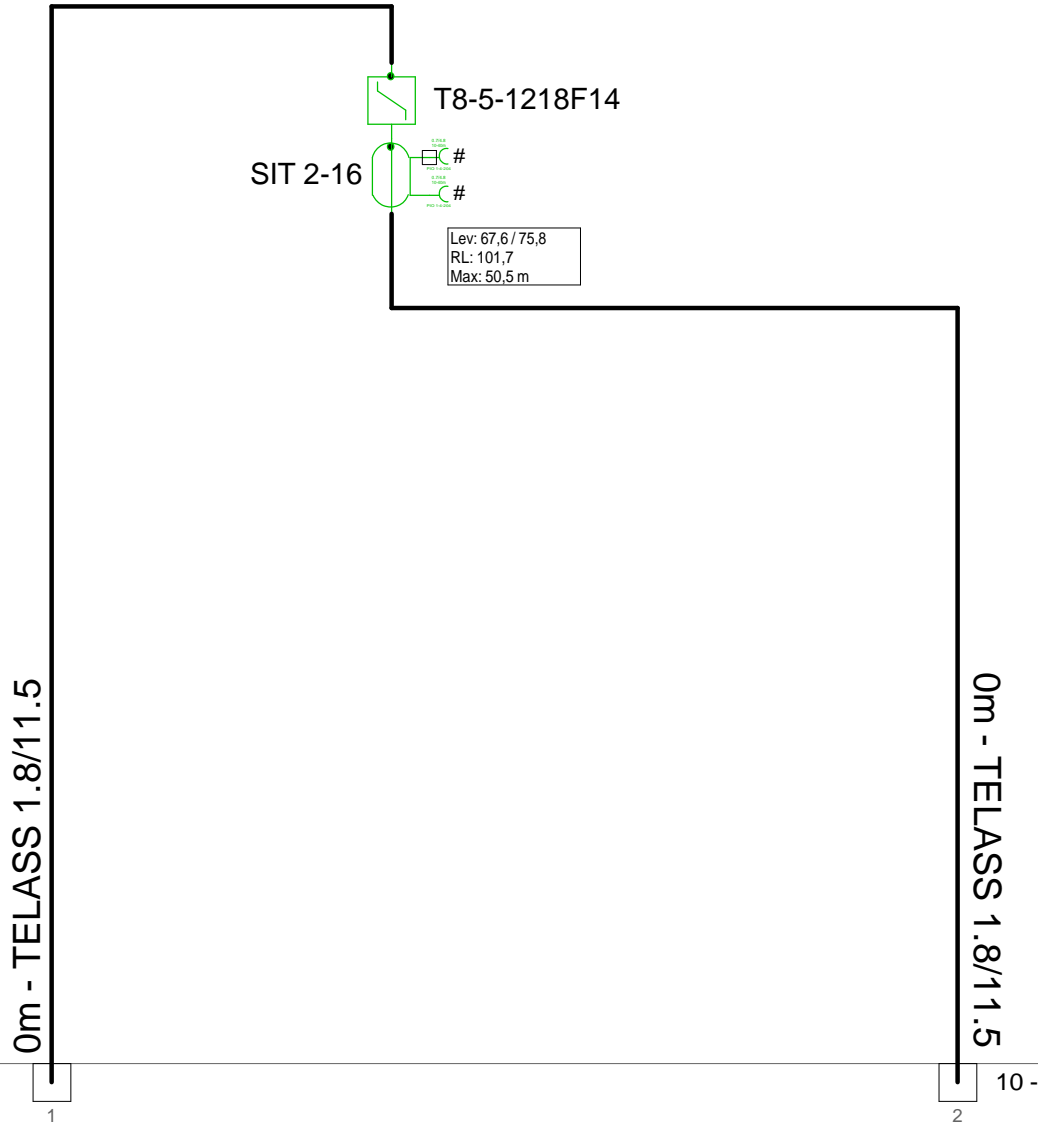


F.TV.2 grøn



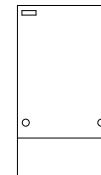
Antenna Installation/Network		Minimum Frequency	Maximum Frequency
		267 MHz	1226 MHz
Operator			
Version	Edited by <b>Ejvind Hansen</b>		Date <b>14-09-2018</b>
Size	Project <b>5011406_013D3</b>		Sheet Id:8/No:8, 7/16
AND Version 4.12, Serial No. 14000-1-LP for: Dansk Kabel TV Tegholmegade 1 DK - 0900 København C			Sheet name <b>F.TV.2 grøn</b>

17 - Nødebjerg 7



8 - Nødebjerg 31

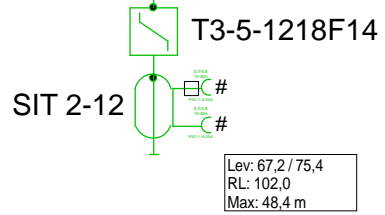
F.TV.2 grøn



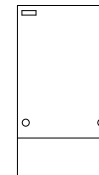
Antenna Installation/Network		Minimum Frequency	Maximum Frequency
		267 MHz	1226 MHz
Operator			
Version	Edited by <b>Ejvind Hansen</b>		Date <b>14-09-2018</b>
Size	Project <b>5011406_013D3</b>		Sheet Id:9/No:9, 8/16
AND Version 4.12, Serial No. 14000-1-LP for: Dansk Kabel TV Teglholmegade 1 DK - 0900 København C			Sheet name <b>F.TV.2 grøn</b>



0m - TELASS 1.8/11.5

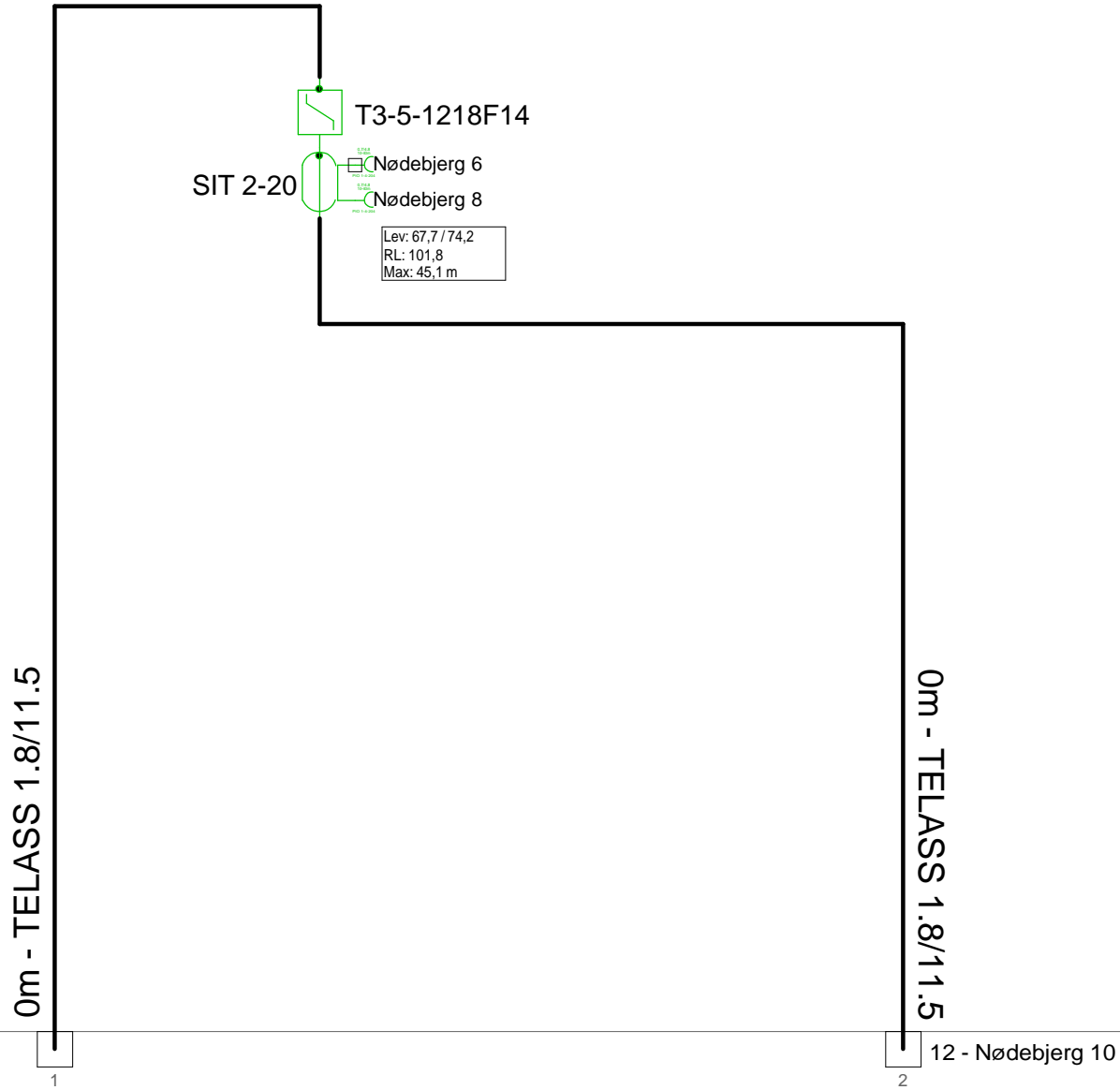


F.TV.2 grøn



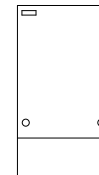
9 - Nødebjerg 9

Antenna Installation/Network		Minimum Frequency	Maximum Frequency
		267 MHz	1226 MHz
Operator			
Version	Edited by <b>Ejvind Hansen</b>		Date <b>14-09-2018</b>
Size	Project <b>5011406_013D3</b>		Sheet Id:10/No:10, 9/16
AND Version 4.12, Serial No. 14000-1-LP for: Dansk Kabel TV Tegholmegade 1 DK - 0900 København C			Sheet name <b>F.TV.2 grøn</b>

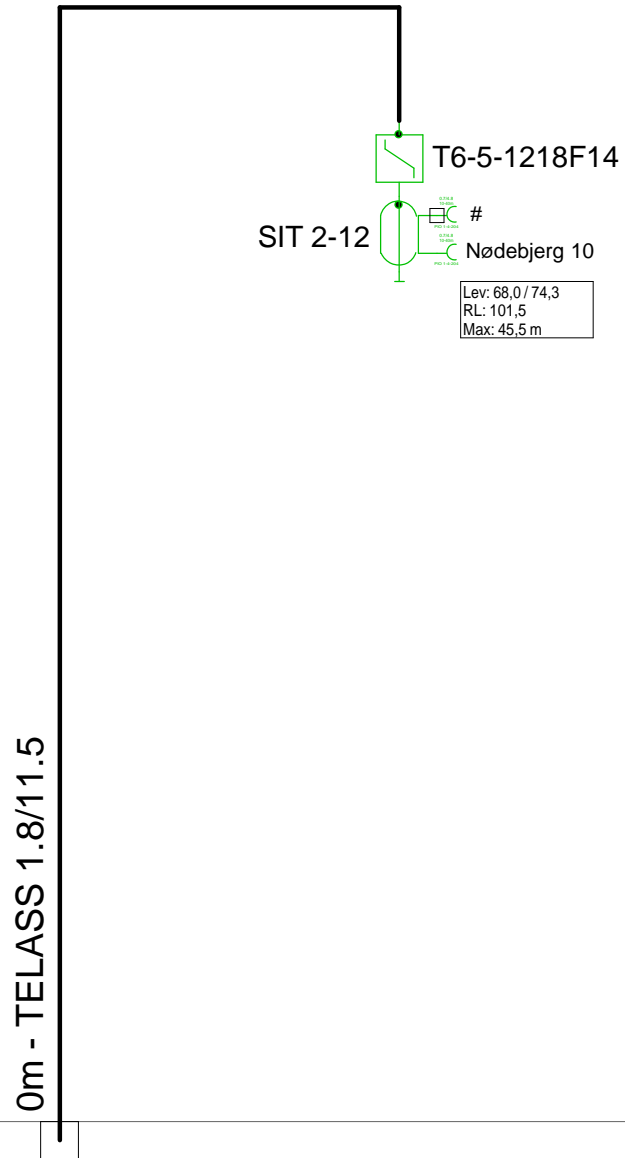


4 - Nødebjerg 4A

F.TV.2 grøn

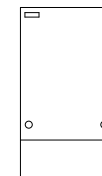


Antenna Installation/Network		Minimum Frequency	Maximum Frequency
		267 MHz	1226 MHz
Operator			
Version	Edited by <b>Ejvind Hansen</b>		Date <b>14-09-2018</b>
Size	Project <b>5011406_013D3</b>		Sheet Id:11/No:11, 10/16
AND Version 4.12, Serial No. 14000-1-LP for: Dansk Kabel TV Teglgolmsgade 1 DK - 0900 København C			Sheet name <b>F.TV.2 grøn</b>



Stikledning som  
TELASS-1.1/7.3

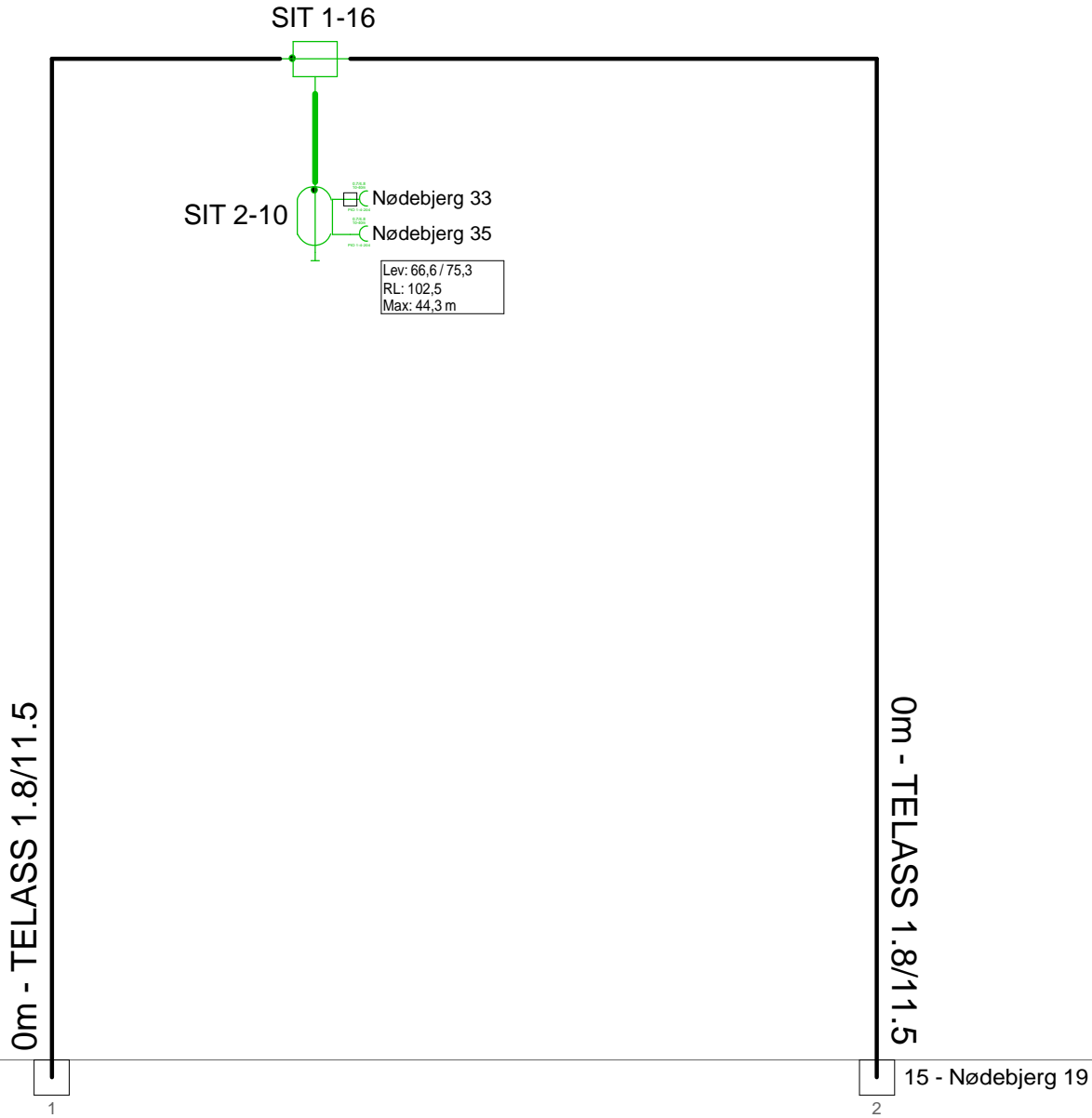
F.TV.2 grøn



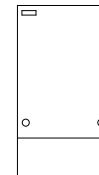
11 - Nødebjerg 6

Antenna Installation/Network		Minimum Frequency	Maximum Frequency
		<b>267 MHz</b>	<b>1226 MHz</b>
Operator			
Version	Edited by <b>Ejvind Hansen</b>		Date <b>14-09-2018</b>
Size	Project <b>5011406_013D3</b>		Sheet Id:12/No:12, 11/16
AND Version 4.12, Serial No. 14000-1-LP for: Dansk Kabel TV Tegholmegade 1 DK - 0900 København C			Sheet name <b>F.TV.2 grøn</b>

5011406\_013D3 - 14 - Nødebjerg 35



F.TV.2 grøn

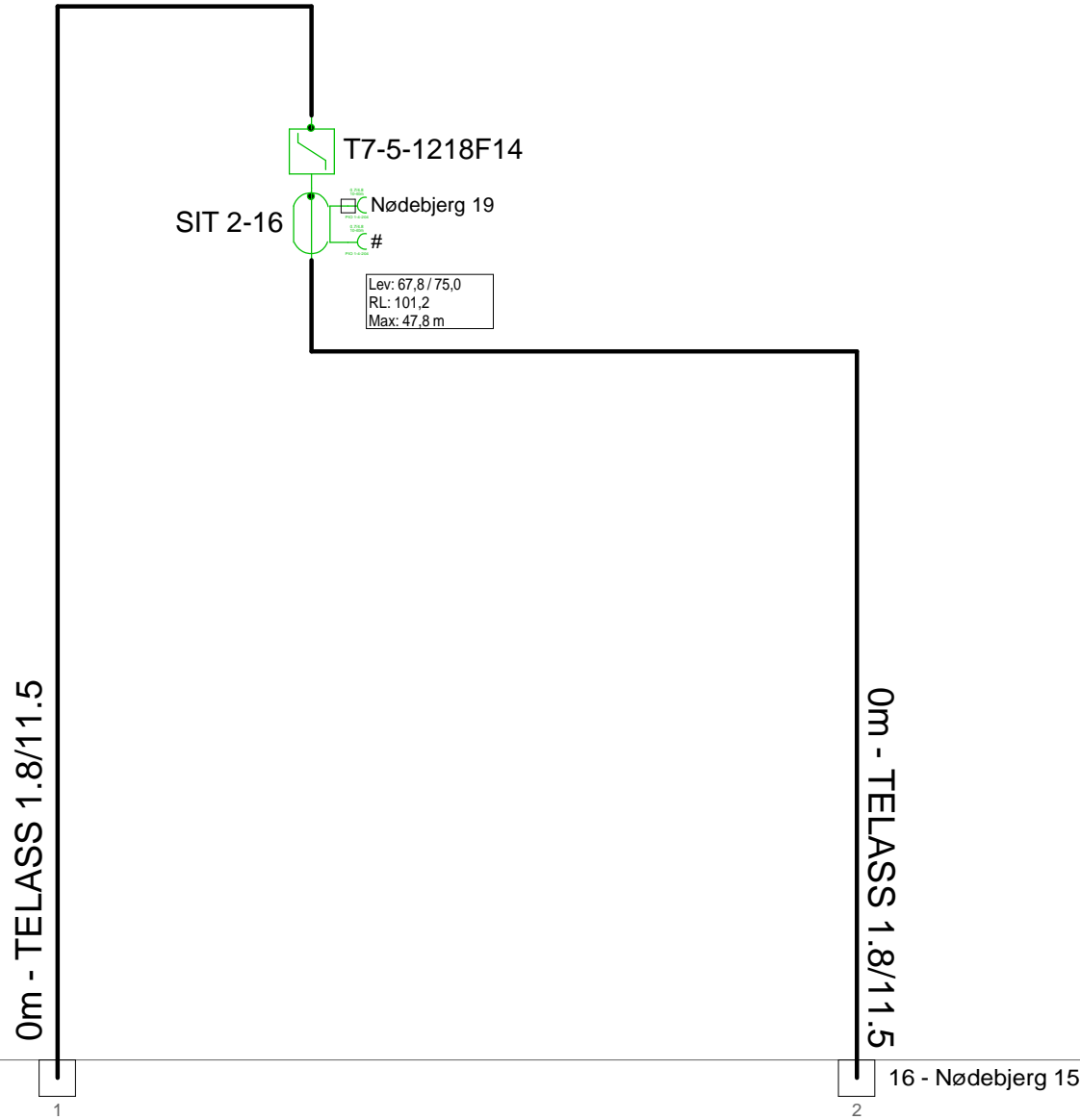


18 - Nødebjerg 23

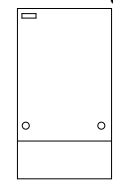
15 - Nødebjerg 19

Antenna Installation/Network		Minimum Frequency	Maximum Frequency
		267 MHz	1226 MHz
Operator			
Version	Edited by <b>Ejvind Hansen</b>		Date <b>14-09-2018</b>
Size	Project <b>5011406_013D3</b>		Sheet Id:14/No:14, 12/16
AND Version 4.12, Serial No. 14000-1-LP for: Dansk Kabel TV Teglgolmsgade 1 DK - 0900 København C			Sheet name <b>F.TV.2 grøn</b>

5011406\_013D3 - 15 - Nødebjerg 19



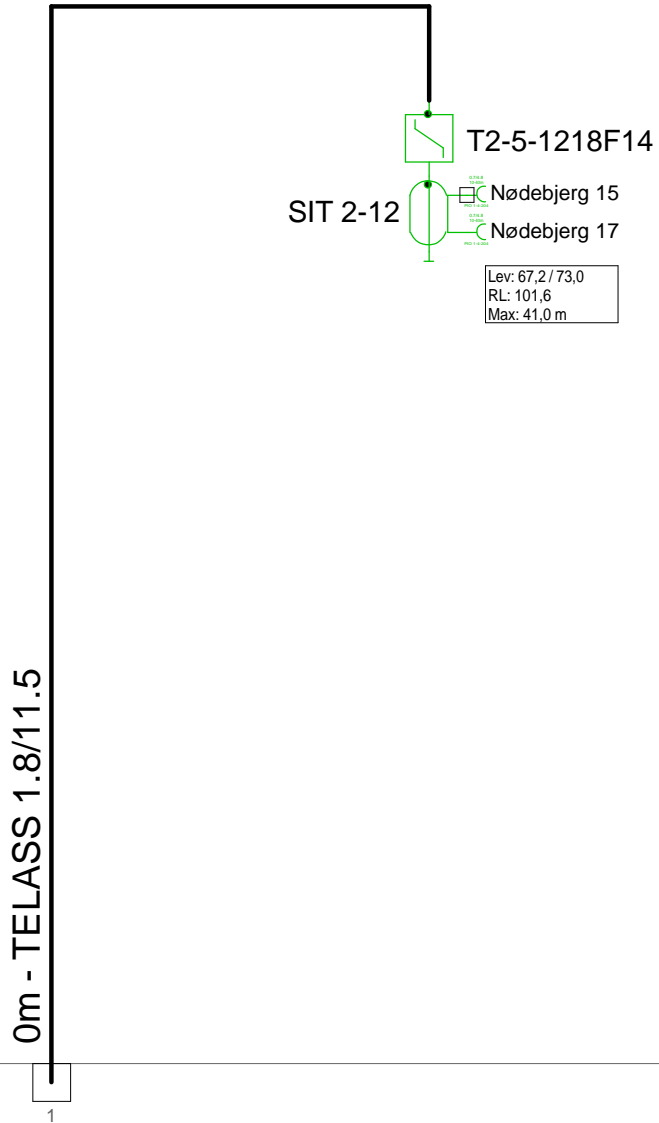
F.TV.2 grøn



14 - Nødebjerg 35

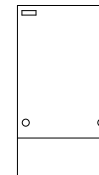
16 - Nødebjerg 15

Antenna Installation/Network		Minimum Frequency	Maximum Frequency
		267 MHz	1226 MHz
Operator			
Version	Edited by <b>Ejvind Hansen</b>		Date <b>14-09-2018</b>
Size	Project <b>5011406_013D3</b>		Sheet Id:15/No:15, 13/16
AND Version 4.12, Serial No. 14000-1-LP for: Dansk Kabel TV Tegholmegade 1 DK - 0900 København C			Sheet name <b>F.TV.2 grøn</b>



15 - Nødebjerg 19

F.TV.2 grøn

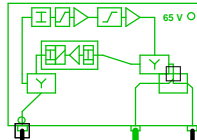


Antenna Installation/Network		Minimum Frequency	Maximum Frequency
		267 MHz	1226 MHz
Operator			
Version	Edited by <b>Ejvind Hansen</b>		Date <b>14-09-2018</b>
Size	Project <b>5011406_013D3</b>		Sheet Id:16/No:16, 14/16
AND Version 4.12, Serial No. 14000-1-LP for: Dansk Kabel TV Tegholmegade 1 DK - 0900 København C			Sheet name <b>F.TV.2 grøn</b>

# 5011406\_013D3 - 17 - Nødebjerg 7

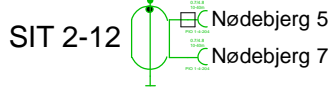
5011406\_013D3.LE.04  
Hargon 351

285,00: 77,6  
762,00: 76,6  
985,00: 75,0  
1140,00: 74,0  
1200,00: 73,7  
CNR: 1218,00: 48,7 dB  
RL: 96,2



285,00: 95,5  
762,00: 102,3  
985,00: 103,5  
1140,00: 104,4  
1200,00: 104,9  
CNR: 1218,00: 48,3 dB  
RL: 74,2

RP: 0,27 A, 43,9 V



Lev: 67,8 / 77,5  
RL: 101,6  
Max: 52,6 m

0m - TELASS 1.8/11.5

0m - TELASS 1.8/11.5

6 - Nødebjerg 1

1

8 - Nødebjerg 31

2

Forstærkerliste 5011406_013D3-17		
5011406_013D3.LE.04 / Hargon 351		
A1	95,2	105,0
AT0dB	Input equ/att	Pad: 0 dB
AT4dB	Attenuator	Pad: 4 dB
EQ5dB 1218MHz	Equalizer	Equ: 5 dB
AT4dB	Interstage at	Pad: 4 dB
EQ13dB 1218MHz	Interstage e	Equ: 13 dB
Vector returvej		
Vector returvej 204MHz	Modem opt	RV: 26 dB
AT4dB	Attenuator	RPad: 4 dB
Vector returvejs udg.reg	Upstream r	RV: 0 dB
AT0dB	Attenuator	RPad: 0 dB
EQ 4dB 204MHz	Equalizer	REqu: 4 dB
Filter ind 204MHz retur		
Filter ud 204MHz retur		
TO15T		

KSAØ 301509



Antenna Installation/Network

Operator

Version	Edited by <b>Ejvind Hansen</b>	Date <b>14-09-2018</b>
---------	-----------------------------------	---------------------------

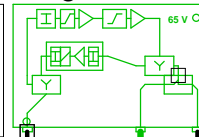
Size	Project <b>5011406_013D3</b>	Sheet Id:17/No:17, 15/16
------	---------------------------------	-----------------------------

AND Version 4.12, Serial No. 14000-1-LP for: <b>Dansk Kabel TV Tegholmegade 1 DK - 0900 København C</b>	Sheet name KSAØ 301509/5011406_013D3
--	---

# 5011406\_013D3 - 18 - Nødebjerg 23

5011406\_013D3.LE.03  
Hargon 351

285,00:	77,7
762,00:	76,9
985,00:	75,3
1140,00:	74,3
1200,00:	74,0
CNR: 1218,00:	48,7 dB
RL:	96,0



285,00:	95,5
762,00:	102,3
985,00:	103,5
1140,00:	104,4
1200,00:	104,9
CNR: 1218,00:	48,3 dB
RL:	74,0

RP: 0,27 A, 43,9 V

SIT 2-12  
Nødebjerg 19  
Nødebjerg 21

Lev: 67,8 / 77,5  
RL: 101,5  
Max: 52,5 m

0m - TELASS 1.8/11.5

0m - TELASS 1.8/11.5

5 - Nødebjerg 27

1

14 - Nødebjerg 35

2

Forstærkerliste 5011406_013D3-18		
5011406_013D3.LE.03 / Hargon 351		
A1	95,2	105,0
AT0dB	Input equ/a	Pad: 0 dB
AT4dB	Attenuator	Pad: 4 dB
EQ5dB 1218MHz	Equalizer	Equ: 5 dB
AT4dB	Interstage	Pad: 4 dB
EQ13dB 1218MHz	Interstage	Equ: 13 dB
Vector returnvej		
Vector returnvej 204M	Modem opt	RV: 26 dB
AT4dB	Attenuator	RPad: 4 dB
Vector returnvejs udg.r	Upstream	RV: 0 dB
AT0dB	Attenuator	RPad: 0 dB
EQ 4dB 204MHz	Equalizer	REqu: 4 dB
Filter ind 204MHz retur		
Filter ud 204MHz retur		
TO15T		

KSAØ 301509



Antenna Installation/Network

Operator

Version	Edited by <b>Ejvind Hansen</b>	Date <b>14-09-2018</b>
---------	-----------------------------------	---------------------------

Size	Project <b>5011406_013D3</b>	Sheet Id:18/No:18, 16/16
------	---------------------------------	-----------------------------

AND Version 4.12, Serial No. 14000-1-LP for: <b>Dansk Kabel TV Teglhølmegade 1 DK - 0900 København C</b>	Sheet name KSAØ 301509/5011406_013D3
---	---