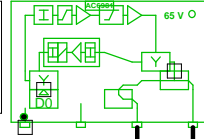


# 5011406\_015D3 - 2 - Nødebjerg 38F

77448  
5011406\_015D3.03  
AC 3010

285,00: 86,0  
762,00: 85,4  
985,00: 84,2  
1140,00: 83,5  
CNR: 1218,00: 48,8 dB  
RL: 82,8



285,00: 100,5  
762,00: 106,9  
985,00: 108,4  
1140,00: 109,4  
CNR: 1218,00: 48,7 dB  
RL: 72,9

RP: 0.70 A, 45,2 V

AC6110

0m - TELASS 1.8/11.5

0m - TELASS 1.8/11.5

1 3 - Nødebjerg 38D

2 8 - Nødebjerg 40B

Forstærkerliste 5011406_015D3-2		
5011406_015D3.03 (77448) / AC 3010		
A1	100,2	110,0
ALSC-mode AC(E)3xxx	AGC module	
AC3x10 D3-mode	Output mode Equ: 13 dB	
AC3010 204MHz Returvej		
AC3010-28dB-returin	Modem opt	RV: 28 dB
R03	P1	RPad: 3 dB
CXF204		
CXF204		
AC6124		
AC6981		
AC6120		

Antenna Installation/Network

Operator

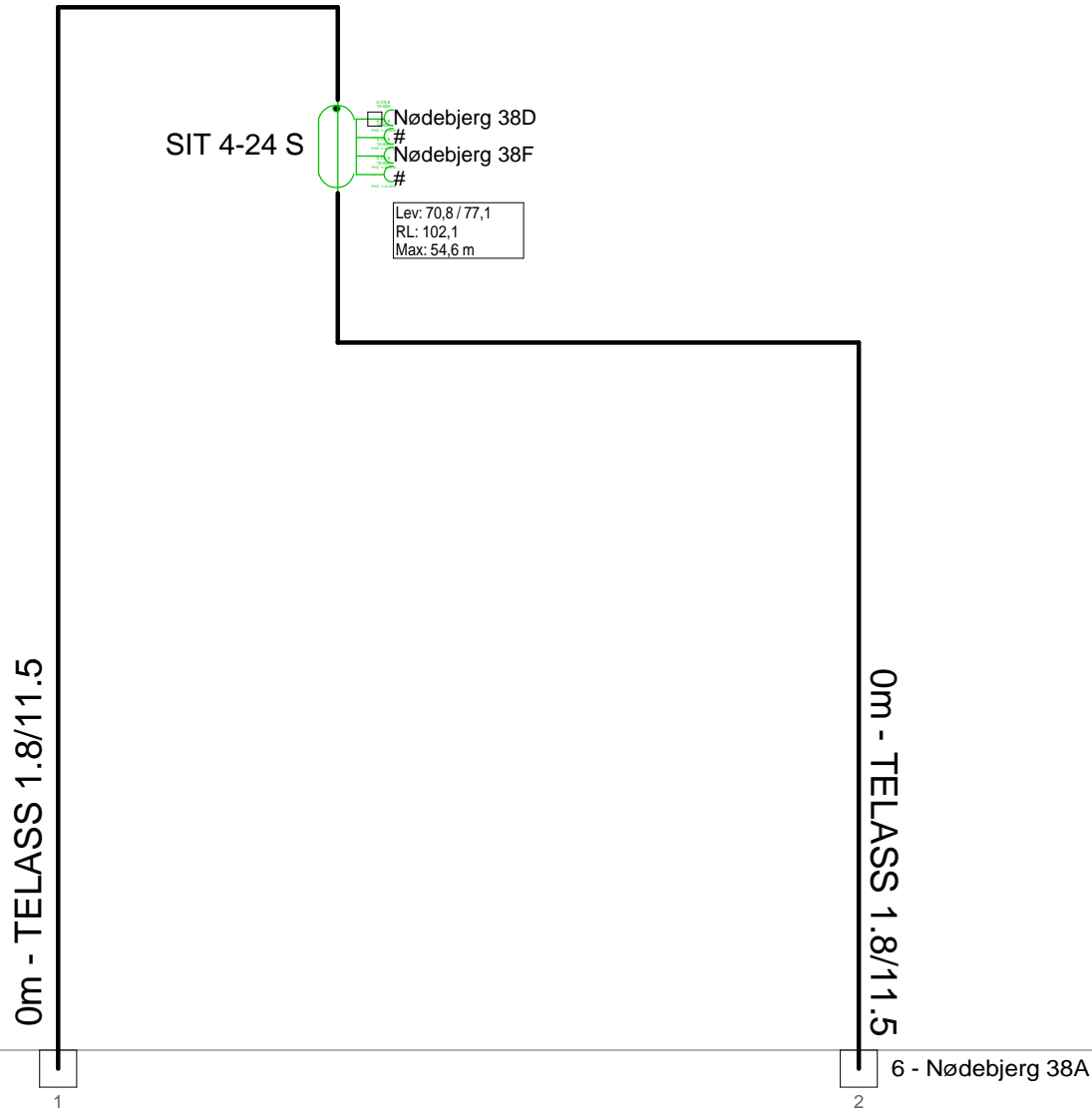
Version	Edited by <b>Ejvind Hansen</b>	Date <b>14-09-2018</b>
---------	-----------------------------------	---------------------------

Size	Project <b>5011406_015D3</b>	Sheet Id:2/No:2, 2/8
------	---------------------------------	-------------------------

AND Version 4.12, Serial No. 14000-1-LP for:  
Dansk Kabel TV Tegholmegade 1 DK - 0900 København C

Sheet name  
5011406\_015D3

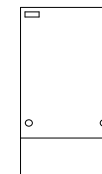
# 5011406\_015D3 - 3 - Nødebjerg 38D



2 - Nødebjerg 38F

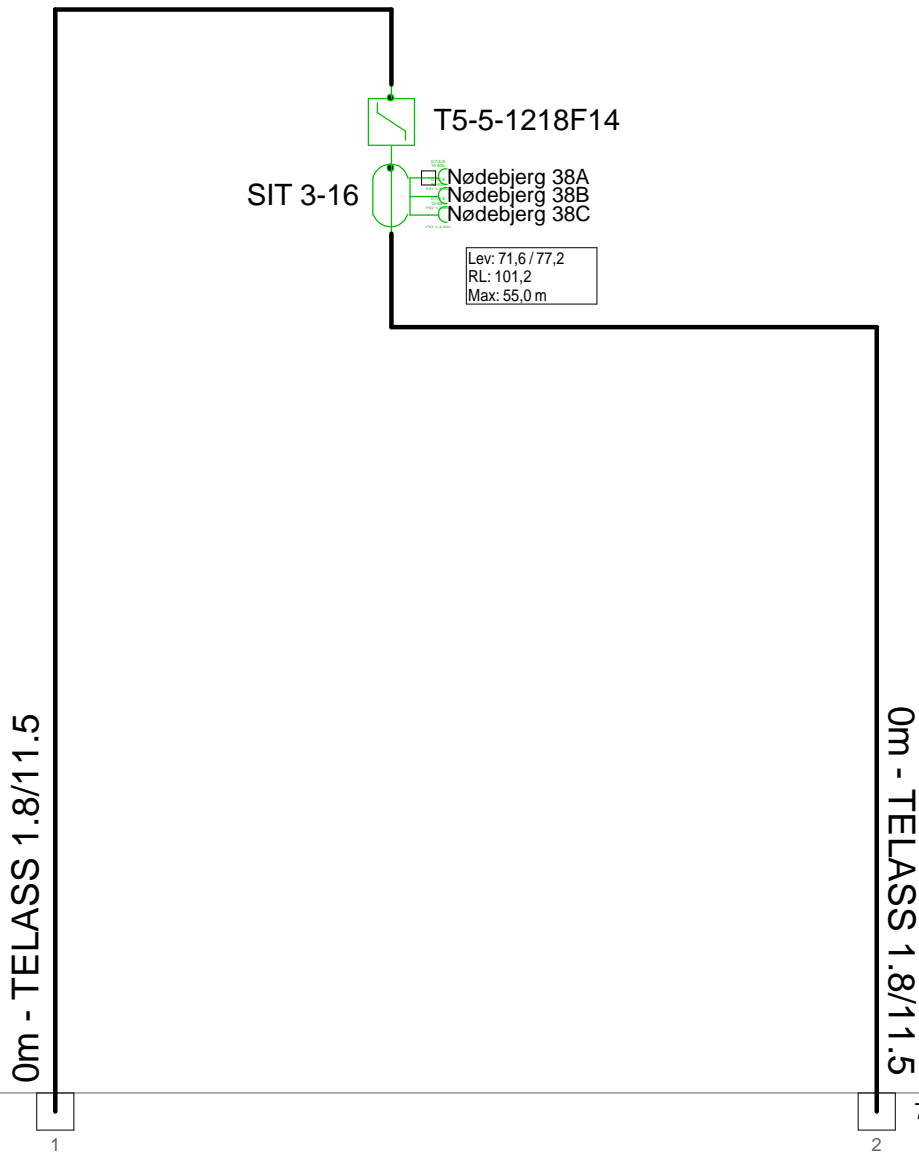
6 - Nødebjerg 38A

F.TV.2 grøn

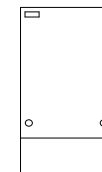


Antenna Installation/Network		Minimum Frequency	Maximum Frequency
		<b>267 MHz</b>	<b>1226 MHz</b>
Operator			
Version	Edited by <b>Ejvind Hansen</b>		Date <b>14-09-2018</b>
Size	Project <b>5011406_015D3</b>		Sheet Id:3/No:3, 3/8
AND Version 4.12, Serial No. 14000-1-LP for: Dansk Kabel TV Tegholmegade 1 DK - 0900 København C			Sheet name <b>F.TV.2 grøn</b>

5011406\_015D3 - 6 - Nødebjerg 38A



F.TV.2 grøn



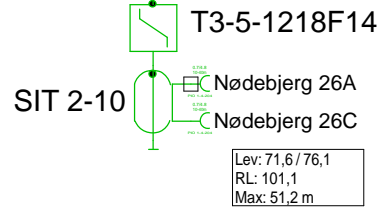
3 - Nødebjerg 38D

7 - Nødebjerg 26A

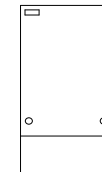
Antenna Installation/Network		Minimum Frequency	Maximum Frequency
		267 MHz	1226 MHz
Operator			
Version	Edited by <b>Ejvind Hansen</b>		Date <b>14-09-2018</b>
Size	Project <b>5011406_015D3</b>		Sheet Id:6/No:6, 4/8
AND Version 4.12, Serial No. 14000-1-LP for: Dansk Kabel TV Tegholmegade 1 DK - 0900 København C			Sheet name <b>F.TV.2 grøn</b>

5011406\_015D3 - 7 - Nødebjerg 26A

0m - TELASS 1.8/11.5

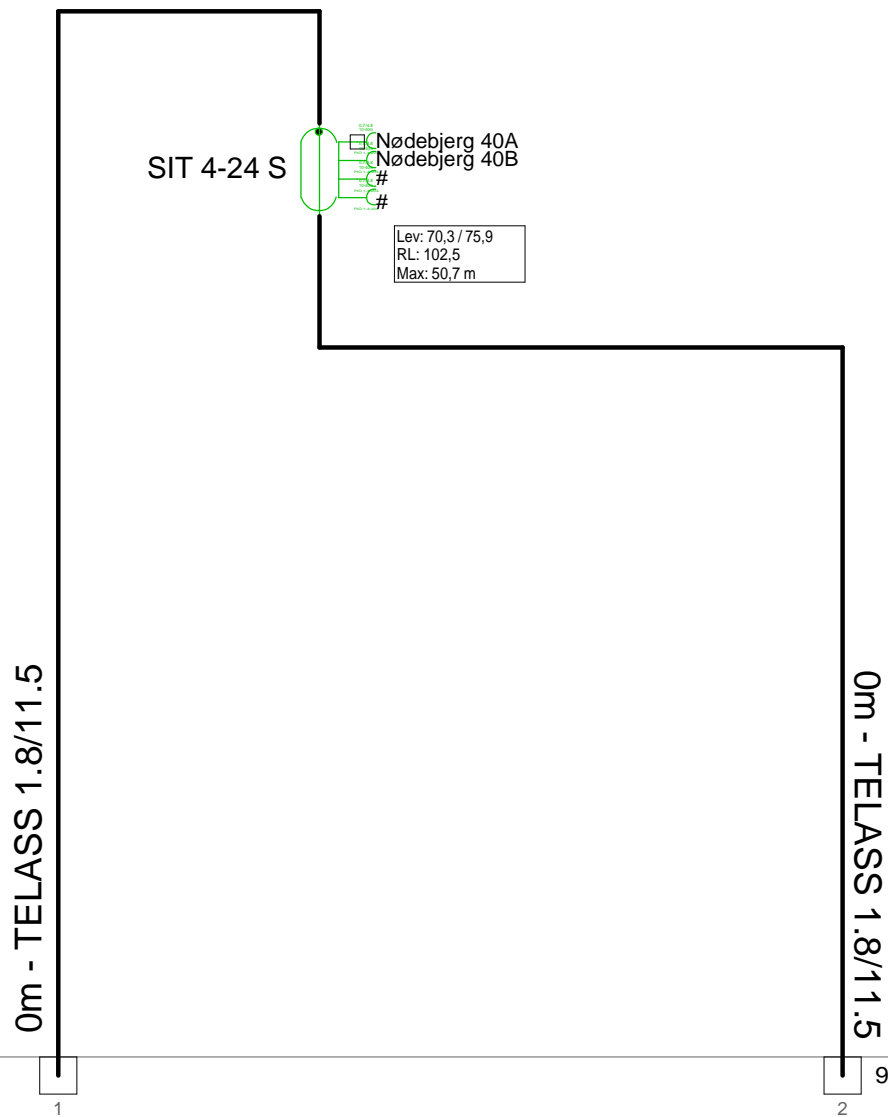


F.TV.2 grøn



6 - Nødebjerg 38A

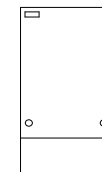
Antenna Installation/Network		Minimum Frequency	Maximum Frequency
		<b>267 MHz</b>	<b>1226 MHz</b>
Operator			
Version	Edited by <b>Ejvind Hansen</b>		Date <b>14-09-2018</b>
Size	Project <b>5011406_015D3</b>		Sheet Id:7/No:7, 5/8
AND Version 4.12, Serial No. 14000-1-LP for: <b>Dansk Kabel TV Tegholmegade 1 DK - 0900 København C</b>			Sheet name <b>F.TV.2 grøn</b>



2 - Nødebjerg 38F

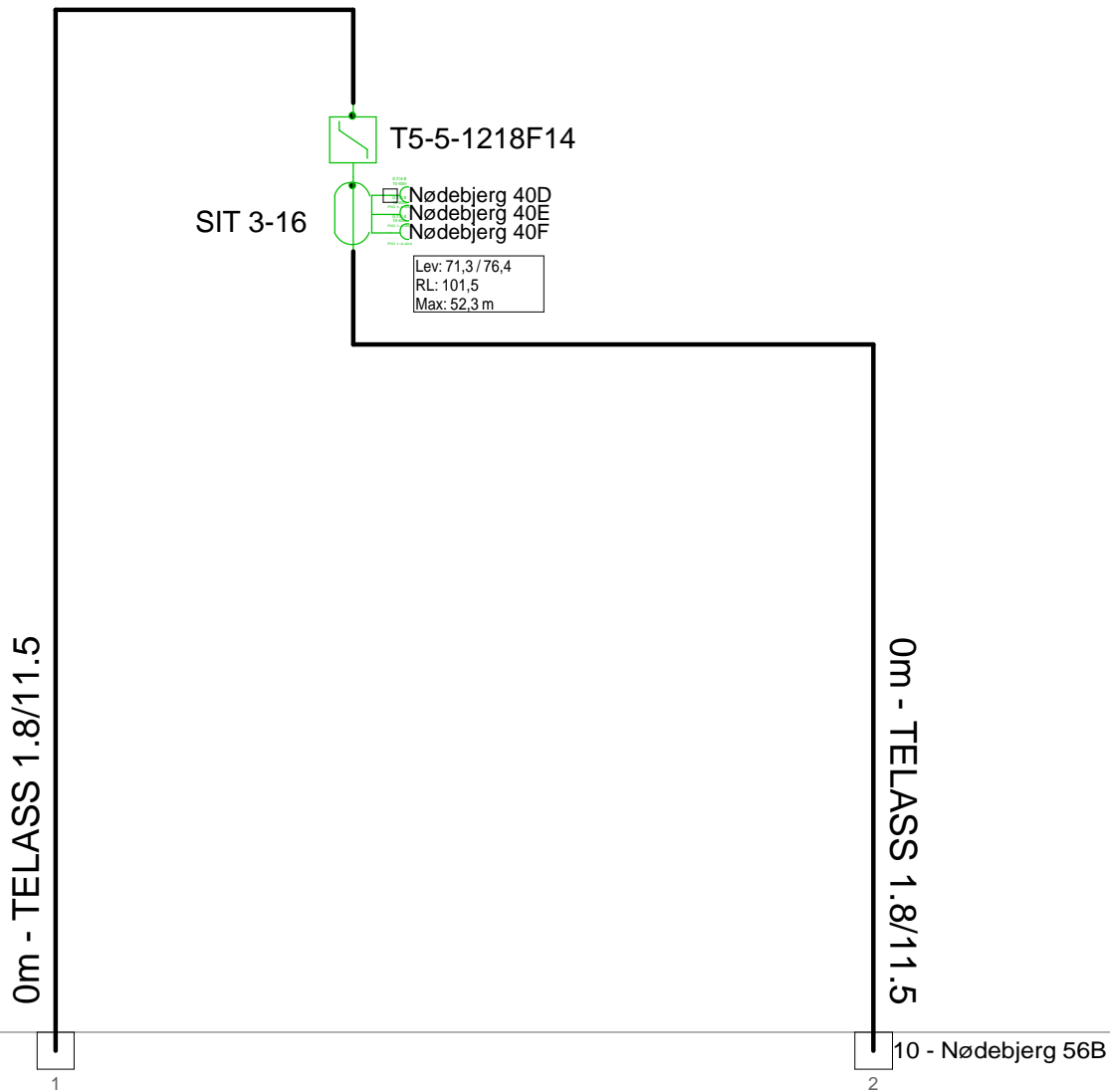
9 - Nødebjerg 40D

F.TV.2 grøn

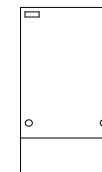


Antenna Installation/Network		Minimum Frequency	Maximum Frequency
		<b>267 MHz</b>	<b>1226 MHz</b>
Operator			
Version	Edited by <b>Ejvind Hansen</b>		Date <b>14-09-2018</b>
Size	Project <b>5011406_015D3</b>		Sheet Id:8/No:8, 6/8
AND Version 4.12, Serial No. 14000-1-LP for: Dansk Kabel TV Tegholmegade 1 DK - 0900 København C			Sheet name <b>F.TV.2 grøn</b>

5011406\_015D3 - 9 - Nødebjerg 40D



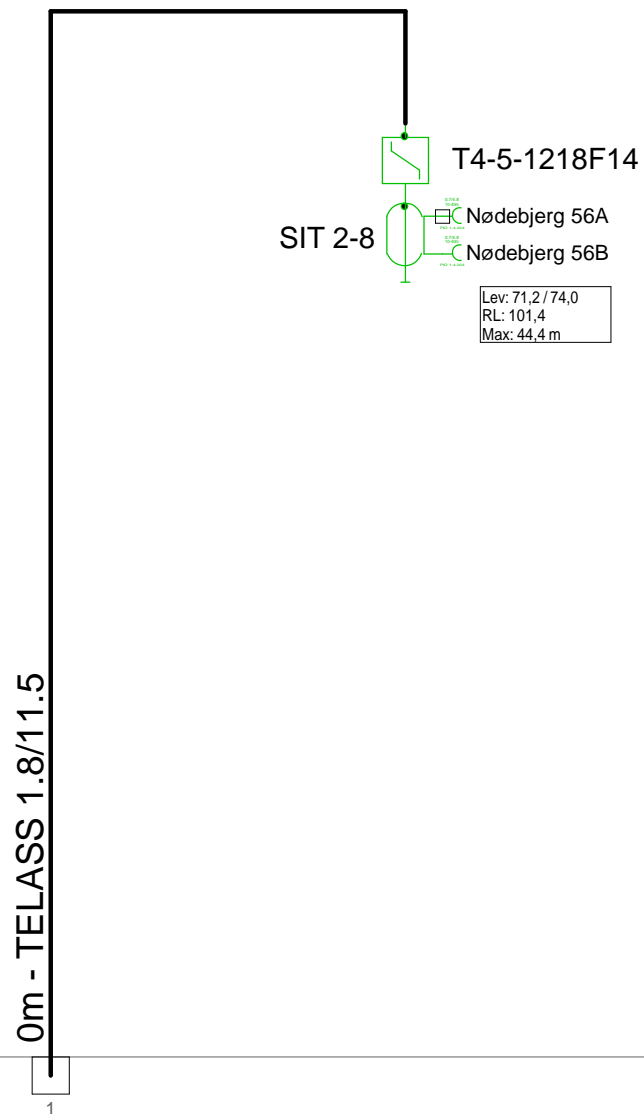
F.TV.2 grøn



8 - Nødebjerg 40B

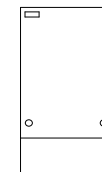
10 - Nødebjerg 56B

Antenna Installation/Network		Minimum Frequency	Maximum Frequency
		<b>267 MHz</b>	<b>1226 MHz</b>
Operator			
Version	Edited by <b>Ejvind Hansen</b>		Date <b>14-09-2018</b>
Size	Project <b>5011406_015D3</b>		Sheet Id:9/No:9, 7/8
AND Version 4.12, Serial No. 14000-1-LP for: Dansk Kabel TV Tegholmegade 1 DK - 0900 København C			Sheet name <b>F.TV.2 grøn</b>



9 - Nødebjerg 40D

F.TV.2 grøn



Antenna Installation/Network		Minimum Frequency	Maximum Frequency
		<b>267 MHz</b>	<b>1226 MHz</b>
Operator			
Version	Edited by <b>Ejvind Hansen</b>		Date <b>14-09-2018</b>
Size	Project <b>5011406_015D3</b>		Sheet id:10/No:10, 8/8
AND Version 4.12, Serial No. 14000-1-LP for: Dansk Kabel TV Tegholmegade 1 DK - 0900 København C			Sheet name <b>F.TV.2 grøn</b>