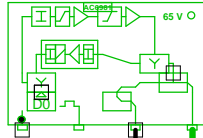




5011406_020D3 - 2 - Nødebjerg 46

77453
5011406_020D3.02
AC 3010

285,00: 74,9
762,00: 78,9
985,00: 79,5
1140,00: 79,7
CNR: 1218,00: 48,8 dB
RL: 94,5

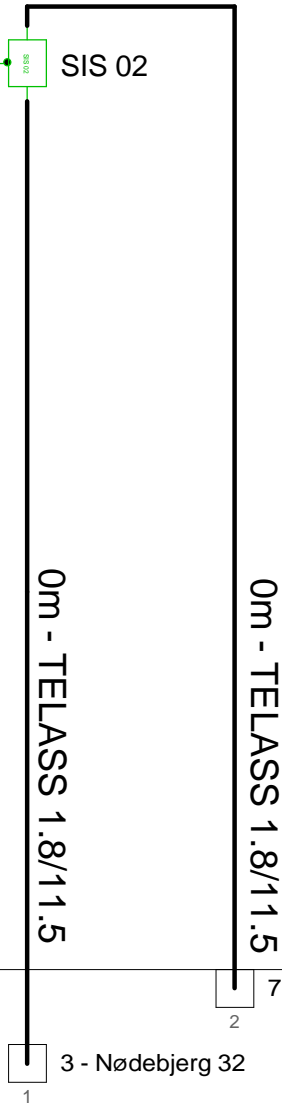


285,00: 99,9
762,00: 104,0
985,00: 104,6
1140,00: 104,8
CNR: 1218,00: 48,4 dB
RL: 75,3

RP: 1.68 A, 45,6 V

AC6113

RP: 0.99 A, 45,6 V



Forstærkerliste 5011406_020D3-2		
5011406_020D3.02 (77453) / AC 3010		
A1		
A2	99,7	105,0
TXS008	Input Equali	Equ: -8 dB
ALSC-mode AC(E)3xxx	AGC module	
AC3x10 D0-mode	Output mode	Equ: 7 dB
AC3010 204MHz Returvej		
AC3010-28dB-returin	Modem opt	RV: 28 dB
R05	P1	RPad: 5 dB
CXF204		
CXF204		
AC6124		
AC6981		
AC6120		

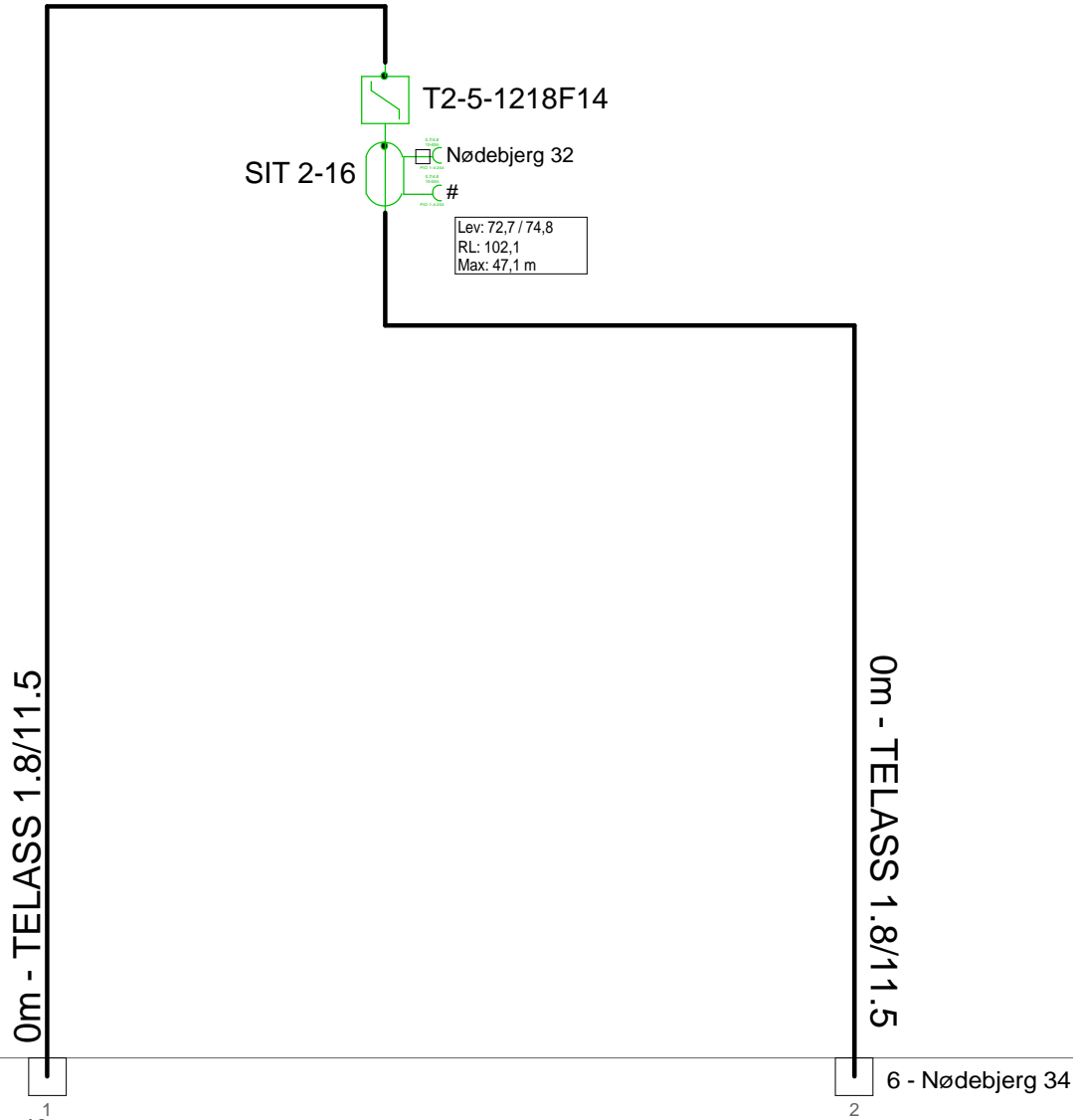
3 4 - Nødebjerg 48

1 3 - Nødebjerg 32

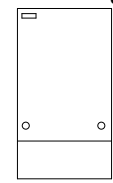
2 7 - Nødebjerg 44

Antenna Installation/Network		
Operator		
Version	Edited by Ejvind Hansen	Date 10-09-2018
Size	Project 5011406_020D3	Sheet Id:2/No:2, 2/13
AND Version 4.12, Serial No. 14000-1-LP for: Dansk Kabel TV Teglhølmegade 1 DK - 0900 København C		Sheet name 5011406_020D

5011406_020D3 - 3 - Nødebjerg 32



F.TV.2 grøn

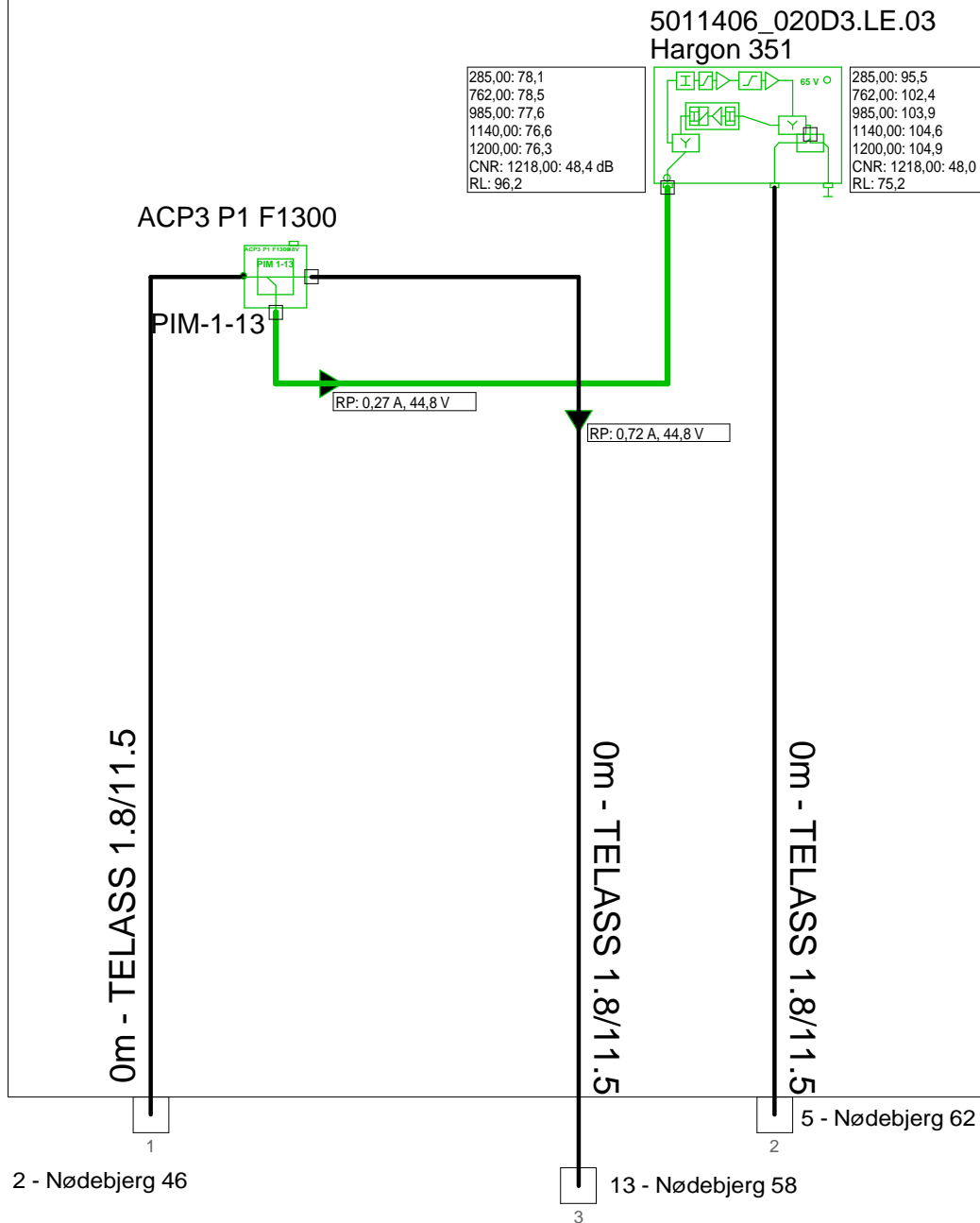


2 - Nødebjerg 46

6 - Nødebjerg 34

Antenna Installation/Network		Minimum Frequency	Maximum Frequency
		267 MHz	1226 MHz
Operator			
Version	Edited by Ejvind Hansen		Date 10-09-2018
Size	Project 5011406_020D3		Sheet Id:3/No:3, 3/13
AND Version 4.12, Serial No. 14000-1-LP for: Dansk Kabel TV Tegholmegade 1 DK - 0900 København C			Sheet name F.TV.2 grøn

5011406_020D3 - 4 - Nødebjerg 48



Forstærkerliste 5011406_020D3-4		
5011406_020D3.LE.03 / Hargon 351		
A1	95,2	105,0
EQ9dB 1218MHz	Input equ/att	Equ: 9 dB
AT0dB	Attenuator	Pad: 0 dB
CS1218-6T	Equalizer	Equ: -7 dB
AT4dB	Interstage at	Pad: 4 dB
EQ13dB 1218MHz	Interstage e	Equ: 13 dB
Vector returvej		
Vector returvej 204MHz	Modem opt	RV: 26 dB
AT5dB	Attenuator	RPad: 5 dB
Vector returvejs udg.reg	Upstream r	RV: 0 dB
AT0dB	Attenuator	RPad: 0 dB
EQ 4dB 204MHz	Equalizer	REqu: 4 dB
Filter ind 204MHz retur		
Filter ud 204MHz retur		
TO8T		

KSAØ 301509



2 - Nødebjerg 46

13 - Nødebjerg 58

5 - Nødebjerg 62

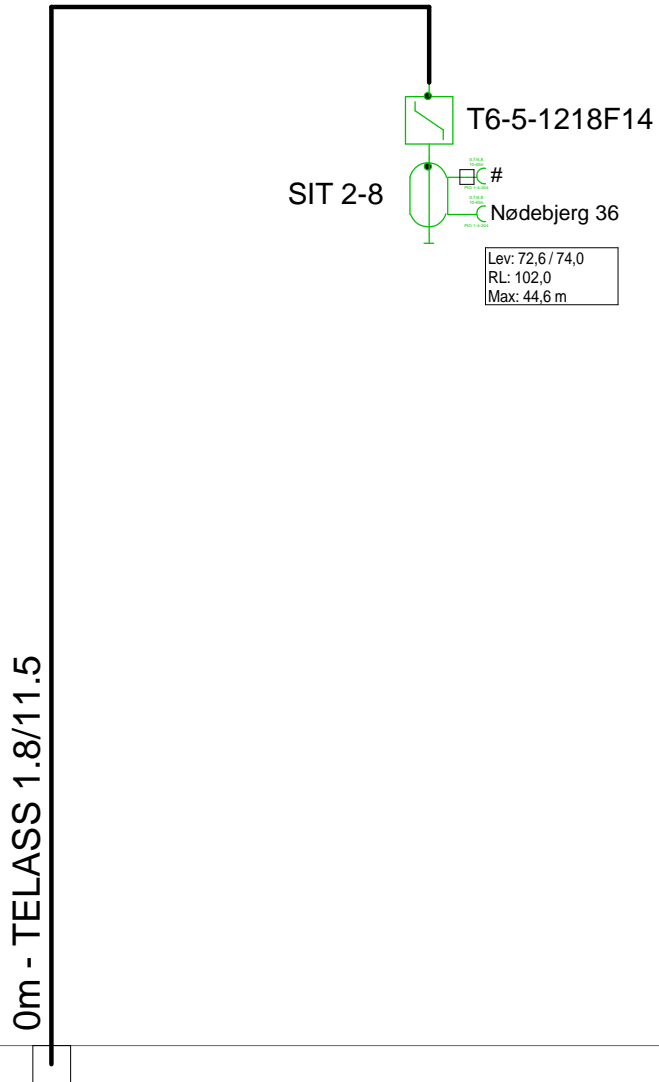
Antenna Installation/Network

Operator

Version	Edited by Ejvind Hansen	Date 10-09-2018
---------	-----------------------------------	---------------------------

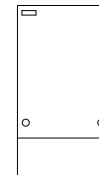
Size	Project 5011406_020D3	Sheet Id:4/No:4, 4/13
------	---------------------------------	--------------------------

AND Version 4.12, Serial No. 14000-1-LP for: Dansk Kabel TV Tegholmmsgade 1 DK - 0900 København C	Sheet name KSAØ 301509/5011406_020D3
---	---



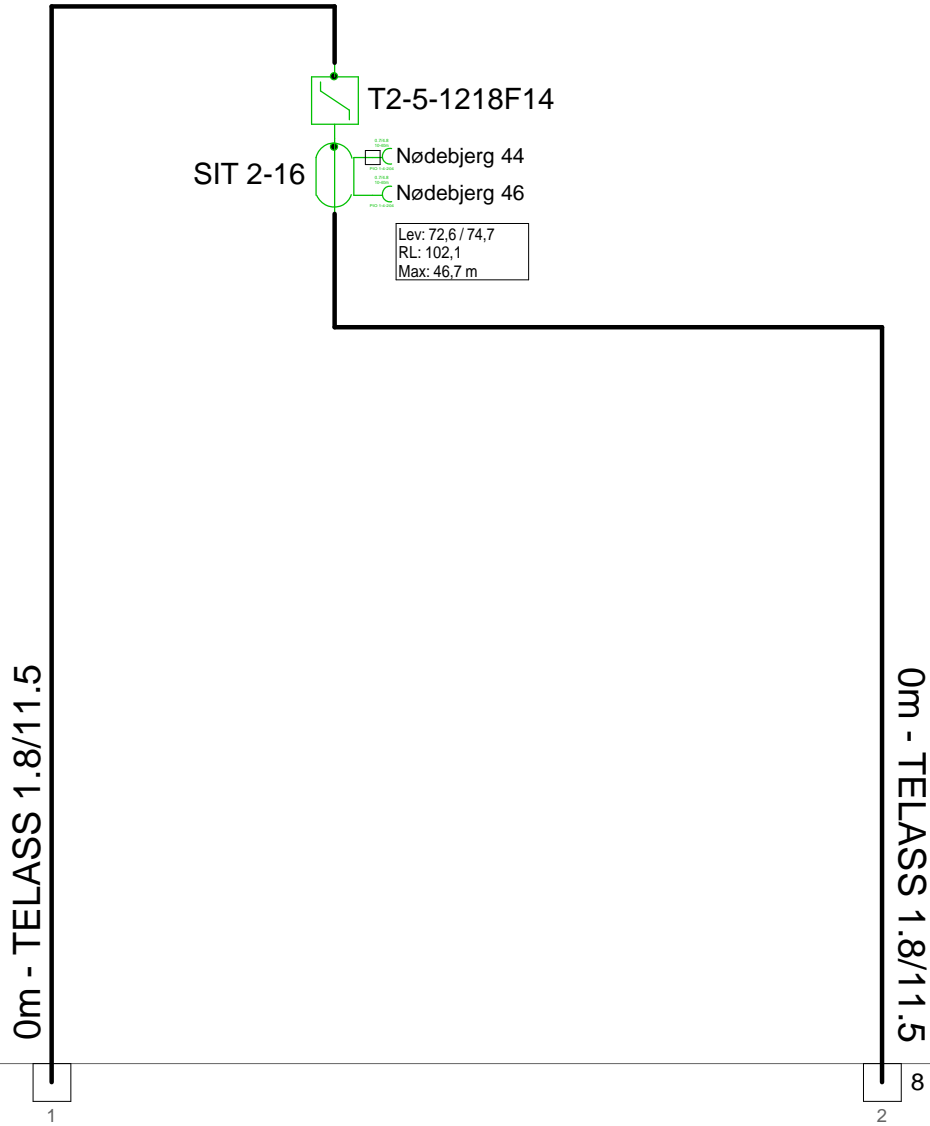
3 - Nødebjerg 32

F.TV.2 grøn



Antenna Installation/Network		Minimum Frequency	Maximum Frequency
		267 MHz	1226 MHz
Operator			
Version	Edited by Ejvind Hansen		Date 10-09-2018
Size	Project 5011406_020D3		Sheet Id:6/No:6, 5/13
AND Version 4.12, Serial No. 14000-1-LP for: Dansk Kabel TV Tegholmegade 1 DK - 0900 København C			Sheet name F.TV.2 grøn

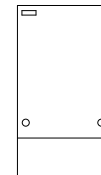
5011406_020D3 - 7 - Nødebjerg 44/46



2 - Nødebjerg 46

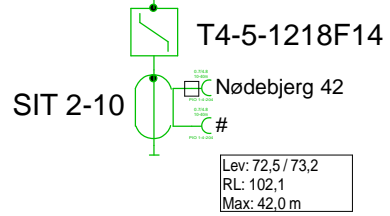
8 - Nødebjerg 42

F.TV.2 grøn



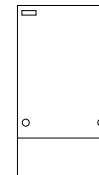
Antenna Installation/Network		Minimum Frequency	Maximum Frequency
		267 MHz	1226 MHz
Operator			
Version	Edited by Ejvind Hansen		Date 10-09-2018
Size	Project 5011406_020D3		Sheet Id:7/No:7, 6/13
AND Version 4.12, Serial No. 14000-1-LP for: Dansk Kabel TV Tegholmegade 1 DK - 0900 København C			Sheet name F.TV.2 grøn

0m - TELASS 1.8/11.5



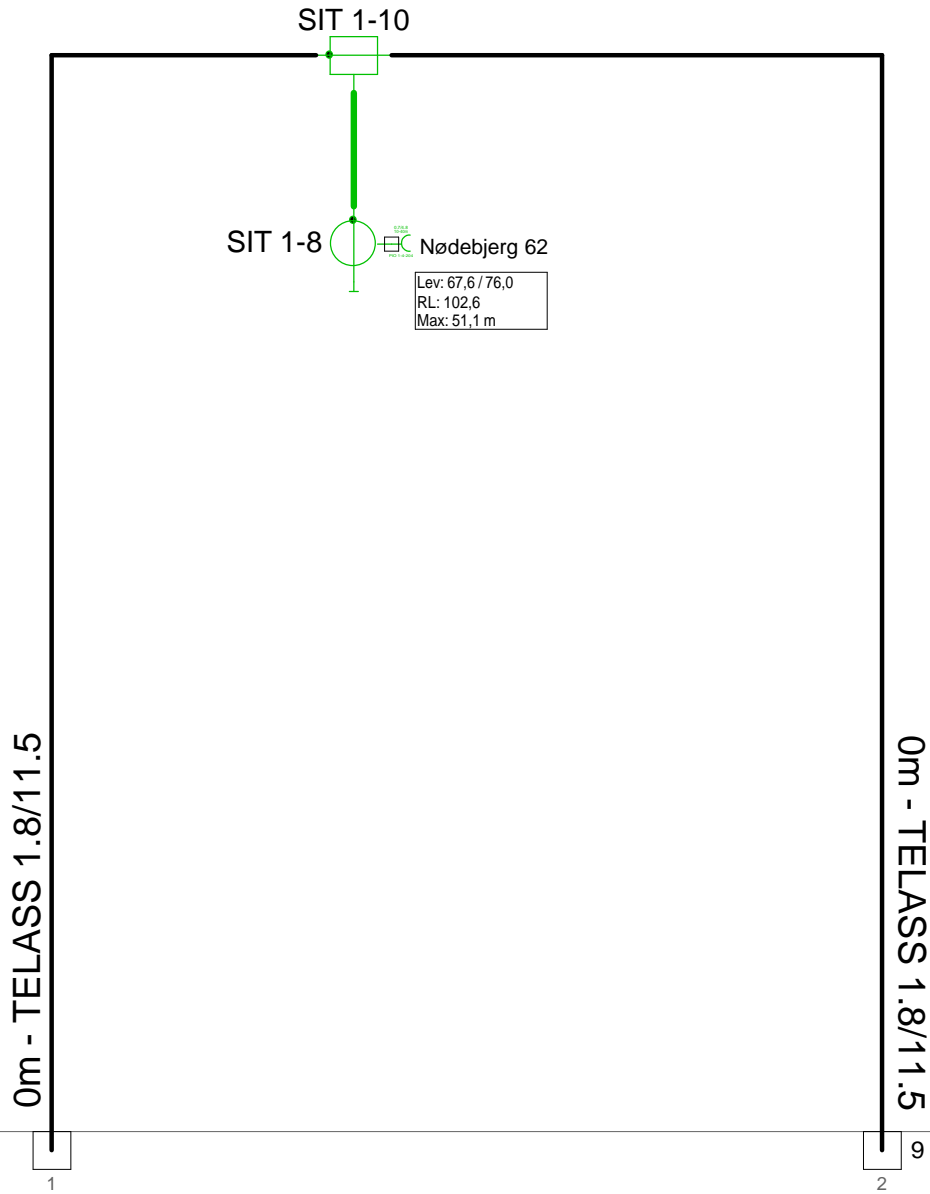
7 - Nødebjerg 44

F.TV.2 grøn



Antenna Installation/Network		Minimum Frequency	Maximum Frequency
		267 MHz	1226 MHz
Operator			
Version	Edited by Ejvind Hansen		Date 10-09-2018
Size	Project 5011406_020D3		Sheet Id:8/No:8, 7/13
AND Version 4.12, Serial No. 14000-1-LP for: Dansk Kabel TV Tegholmegade 1 DK - 0900 København C			Sheet name F.TV.2 grøn

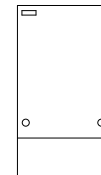
5011406_020D3 - 5 - Nødebjerg 62



4 - Nødebjerg 58

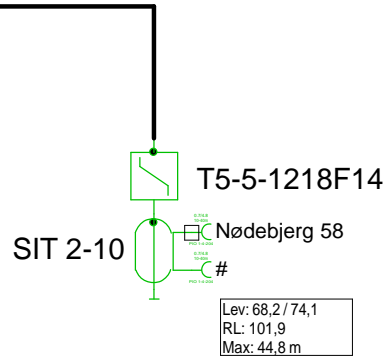
9 - Nødebjerg 58

F.TV.2 grøn



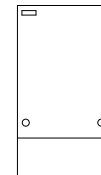
Antenna Installation/Network		Minimum Frequency	Maximum Frequency
		267 MHz	1226 MHz
Operator			
Version	Edited by Ejvind Hansen		Date 10-09-2018
Size	Project 5011406_020D3		Sheet Id:5/No:5, 8/13
AND Version 4.12, Serial No. 14000-1-LP for: Dansk Kabel TV Tegholmegade 1 DK - 0900 København C			Sheet name F.TV.2 grøn

0m - TELASS 1.8/11.5



Lev: 68,2 / 74,1
RL: 101,9
Max: 44,8 m

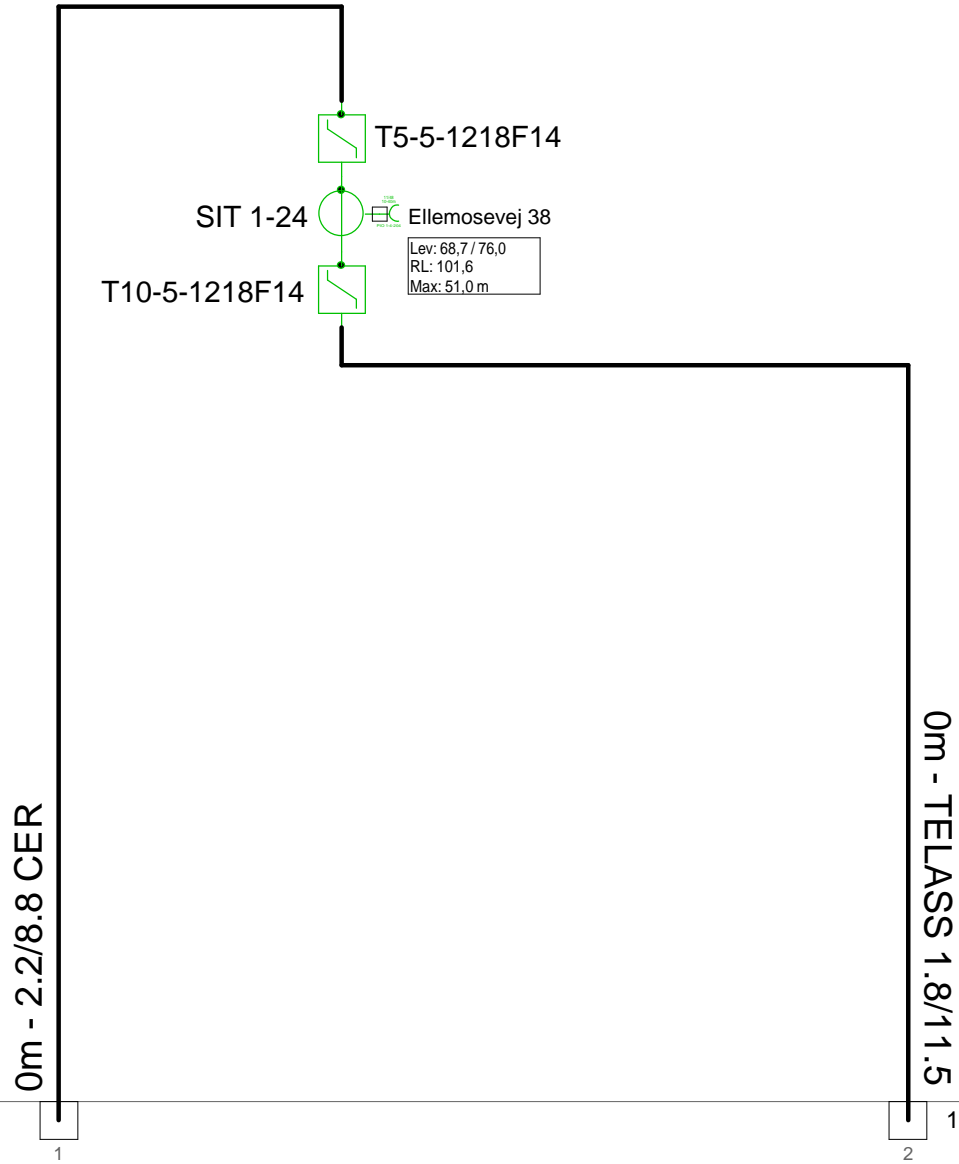
F.TV.2 grøn



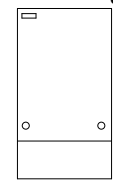
5 - Nødebjerg 62

Antenna Installation/Network		Minimum Frequency	Maximum Frequency
		267 MHz	1226 MHz
Operator			
Version	Edited by Ejvind Hansen		Date 10-09-2018
Size	Project 5011406_020D3		Sheet Id:9/No:9, 9/13
AND Version 4.12, Serial No. 14000-1-LP for: Dansk Kabel TV Tegholmegade 1 DK - 0900 København C			Sheet name F.TV.2 grøn

5011406_020D3 - 11 - Ellemosevej 38



F.TV.2 grøn



12 - Nødebjerg 52

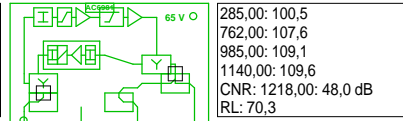
10 - Maribovej 5

Antenna Installation/Network		Minimum Frequency	Maximum Frequency
		267 MHz	1226 MHz
Operator			
Version	Edited by Ejvind Hansen		Date 10-09-2018
Size	Project 5011406_020D3		Sheet Id:11/No:11, 10/13
AND Version 4.12, Serial No. 14000-1-LP for: Dansk Kabel TV Tegholmegade 1 DK - 0900 København C			Sheet name F.TV.2 grøn

5011406_020D3 - 12 - Nødebjerg 50/52

77455
5011406_020D3.LE.02
AC 3010

285,00: 78,9
762,00: 78,2
985,00: 76,6
1140,00: 75,3
CNR: 1218,00: 48,4 dB
RL: 95,1



285,00: 100,5
762,00: 107,6
985,00: 109,1
1140,00: 109,6
CNR: 1218,00: 48,0 dB
RL: 70,3

RP: 0.72 A, 44.3 V

SIT 2-16

Nødebjerg 52

Lev: 67,9 / 77,5
RL: 102,5
Max: 53,8 m

0m - TELASS 1.8/11.5

0m - 2.2/8.8 CER

13 - Nødebjerg 58

11 - Ellemosevej 38

Forstærkerliste 5011406_020D3-12		
5011406_020D3.LE.02 (77455) / AC 3010		
A1	100,2	110,0
ALSC-mode AC(E)3xxx	AGC module	
AC3x10 D3-mode	Output mode	Equ: 13 dB
AC3010 204MHz Returvej		
AC3010-28dB-returin	Modem opt	RV: 28 dB
R00	P1	RPad: 0 dB
AC6110		
CXF204		
CXF204		
AC6115		
AC6981		
AC6120		

KSAØ 301509



Antenna Installation/Network

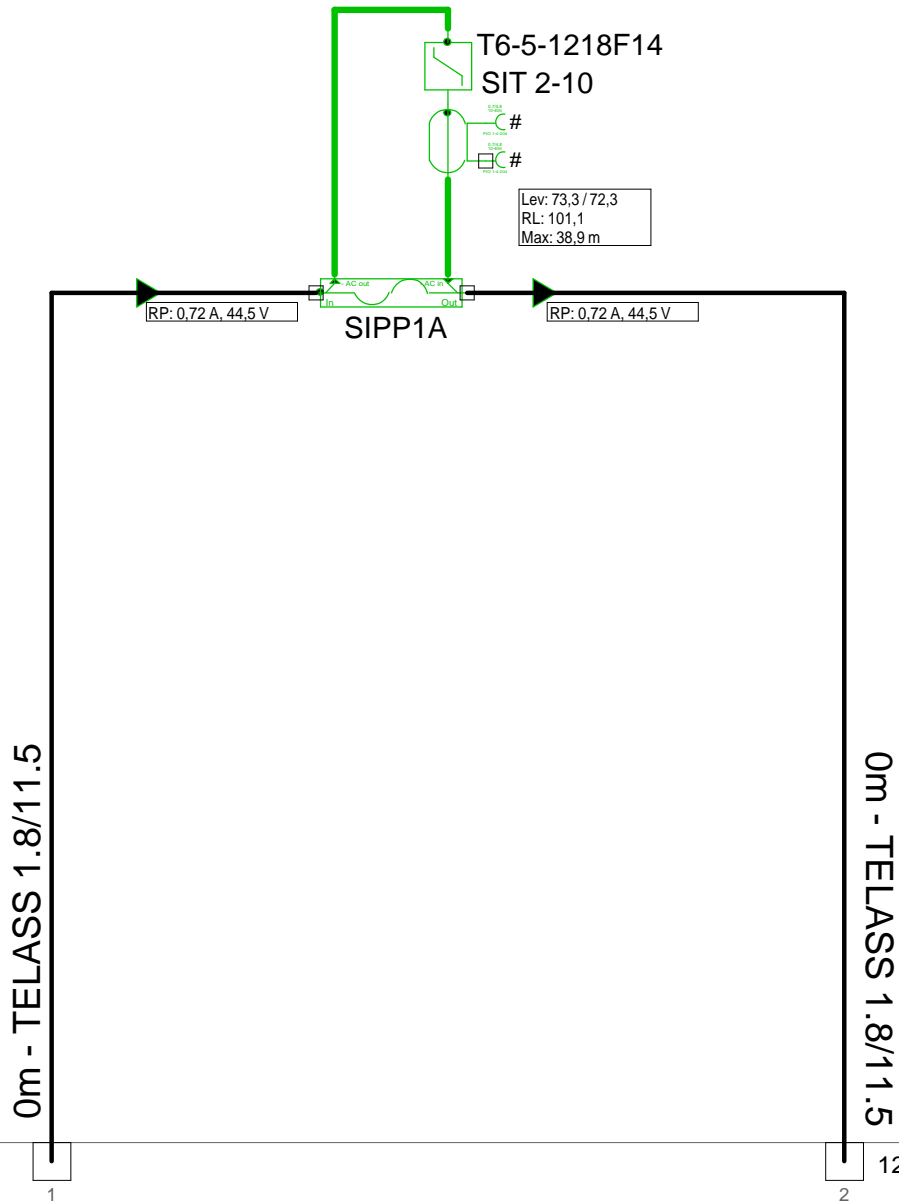
Operator

Version	Edited by Ejvind Hansen	Date 10-09-2018
---------	-----------------------------------	---------------------------

Size	Project 5011406_020D3	Sheet Id:12/No:12, 11/13
------	---------------------------------	-----------------------------

AND Version 4.12, Serial No. 14000-1-LP for: Dansk Kabel TV Tegholmegade 1 DK - 0900 København C	Sheet name KSAØ 301509/5011406_020D3
--	---

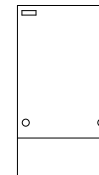
5011406_020D3 - 13 - Nødebjerg 48/50



4 - Nødebjerg 58

12 - Nødebjerg 52

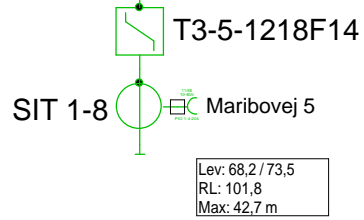
KSAØ 301204



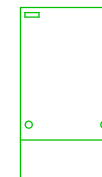
Antenna Installation/Network		Minimum Frequency	Maximum Frequency
		267 MHz	1226 MHz
Operator			
Version	Edited by Ejvind Hansen		Date 10-09-2018
Size	Project 5011406_020D3		Sheet Id:13/No:13, 12/13
AND Version 4.12, Serial No. 14000-1-LP for: Dansk Kabel TV Tegholmegade 1 DK - 0900 København C			Sheet name KSAØ 3012

5011406_020D3 - 10 - Maribovej 5

0m - TELASS 1.8/11.5



F.TV.2 grøn



11 - Ellemosevej 38

Antenna Installation/Network		Minimum Frequency	Maximum Frequency
		267 MHz	1226 MHz
Operator			
Version	Edited by Ejvind Hansen		Date 10-09-2018
Size	Project 5011406_020D3		Sheet Id:10/No:10, 13/13
AND Version 4.12, Serial No. 14000-1-LP for: Dansk Kabel TV Tegholmegade 1 DK - 0900 København C			Sheet name F.TV.2 grøn