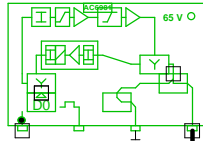




# 5011406\_022D3 - 2 - Tjørnevej 2/Engvej

77458  
5011406\_022D3.02  
AC 3010

285,00: 80,9  
762,00: 78,1  
985,00: 76,5  
1140,00: 75,1  
CNR: 1218,00: 50,1 dB  
RL: 87,2



285,00: 99,9  
762,00: 103,7  
985,00: 104,6  
1140,00: 104,9  
CNR: 1218,00: 49,6 dB  
RL: 75,4

RP: 0,99 A, 44,7 V

AC6113

RP: 0,27 A, 44,7 V

0m - TELASS-1.1/7.3

5 - Ryttervej 4

1

## Forstærkerliste 5011406\_022D3-2

| 5011406_022D3.02 (77458) / AC 3010 |             |            |
|------------------------------------|-------------|------------|
| A1                                 |             |            |
| A2                                 | 99,7        | 105,0      |
| ALSC-mode AC(E)3xxx                | AGC module  |            |
| AC3x10 D0-mode                     | Output mode | Equ: 7 dB  |
| AC3010 204MHz Returvej             |             |            |
| AC3010-28dB-returin                | Modem opt   | RV: 28 dB  |
| R05                                | P1          | RPad: 5 dB |
| CXF204                             |             |            |
| CXF204                             |             |            |
| AC6115                             |             |            |
| AC6981                             |             |            |
| AC6120                             |             |            |

Antenna Installation/Network

Operator

|         |                                   |                           |
|---------|-----------------------------------|---------------------------|
| Version | Edited by<br><b>Ejvind Hansen</b> | Date<br><b>14-09-2018</b> |
|---------|-----------------------------------|---------------------------|

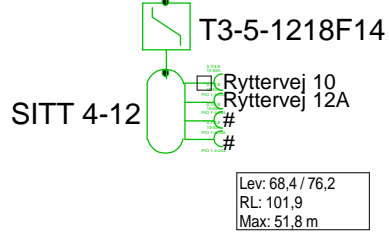
|      |                                 |                         |
|------|---------------------------------|-------------------------|
| Size | Project<br><b>5011406_022D3</b> | Sheet<br>Id:2/No:2, 2/5 |
|------|---------------------------------|-------------------------|

|  |                                    |
|--|------------------------------------|
| AND Version 4.12, Serial No. 14000-1-LP for:<br>Dansk Kabel TV Teglhølmegade 1 DK - 0900 København C | Sheet name<br><b>5011406_022D3</b> |
|--|------------------------------------|

0m - TELASS-1.1/7.3

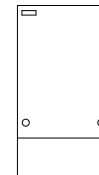
4 - Ryttervej 8

1



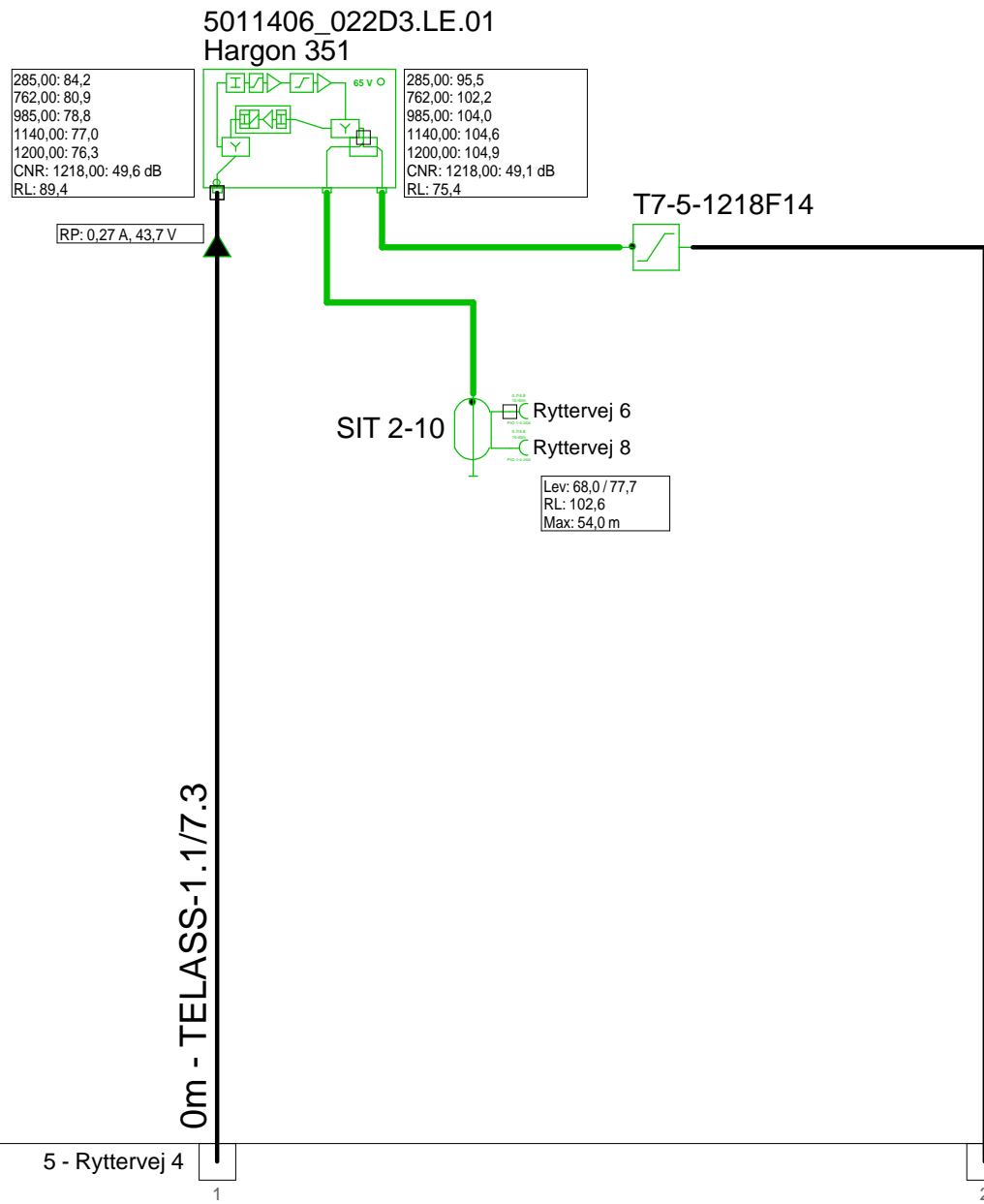
3 stikledninger her

F.TV.2 grøn

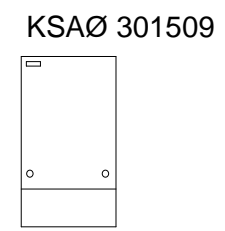


|   |                                   |                   |                                  |
|---|-----------------------------------|-------------------|----------------------------------|
| Antenna Installation/Network  |                                   | Minimum Frequency | Maximum Frequency                |
|   |                                   | 267 MHz           | 1226 MHz                         |
| Operator  |                                   |                   |                                  |
| Version   | Edited by<br><b>Ejvind Hansen</b> |                   | Date<br><b>14-09-2018</b>        |
| Size  | Project<br><b>5011406_022D3</b>   |                   | Sheet<br>Id:3/No:3, 3/5          |
| AND Version 4.12, Serial No. 14000-1-LP for:<br>Dansk Kabel TV Tegholmegade 1 DK - 0900 København C |                                   |                   | Sheet name<br><b>F.TV.2 grøn</b> |

# 5011406\_022D3 - 4 - Ryttervej 8

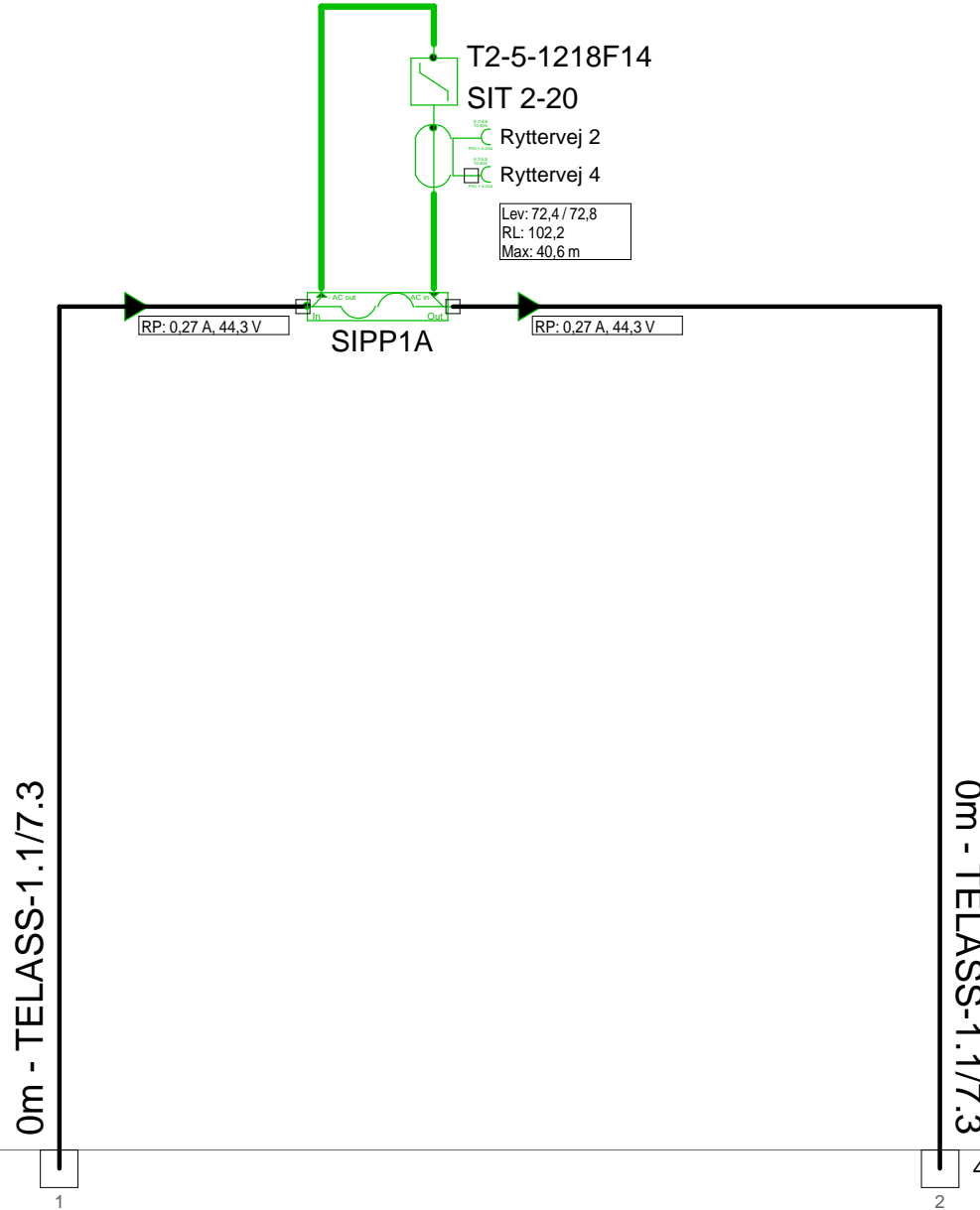


| Forstærkerliste 5011406_022D3-4  |               |            |
|----------------------------------|---------------|------------|
| 5011406_022D3.LE.01 / Hargon 351 |               |            |
| A1                               | 95,2          | 105,0      |
| EQ17dB 1218MHz                   | Input equ/att | Equ: 17 dB |
| AT0dB                            | Attenuator    | Pad: 0 dB  |
| CS1218-6T                        | Equalizer     | Equ: -7 dB |
| AT4dB                            | Interstage at | Pad: 4 dB  |
| EQ13dB 1218MHz                   | Interstage e  | Equ: 13 dB |
| Vector returvej                  |               |            |
| Vector returvej 204MHz           | Modem opt     | RV: 26 dB  |
| AT5dB                            | Attenuator    | RPad: 5 dB |
| Vector returvejs udg.reg         | Upstream r    | RV: 0 dB   |
| AT7dB                            | Attenuator    | RPad: 7 dB |
| EQ 7dB 204MHz                    | Equalizer     | REqu: 7 dB |
| Filter ind 204MHz retur          |               |            |
| Filter ud 204MHz retur           |               |            |
| TO17T                            |               |            |

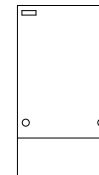


|   |                                   |   |
|---|-----------------------------------|---|
| Antenna Installation/Network  |                                   |   |
| Operator  |                                   |   |
| Version   | Edited by<br><b>Ejvind Hansen</b> | Date<br><b>14-09-2018</b>               |
| Size  | Project<br><b>5011406_022D3</b>   | Sheet<br>Id:4/No:4, 4/5                 |
| AND Version 4.12, Serial No. 14000-1-LP for:<br><b>Dansk Kabel TV Tegholmmsgade 1 DK - 0900 København C</b> |                                   | Sheet name<br>KSAØ 301509/5011406_022D3 |

5011406\_022D3 - 5 - Ryttervej 4



F.TV.2 grøn



2 - Tjørnevej 2  
Engvej

4 - Ryttervej 8

|   |                                   |                   |                                  |
|---|-----------------------------------|-------------------|----------------------------------|
| Antenna Installation/Network  |                                   | Minimum Frequency | Maximum Frequency                |
|   |                                   | 267 MHz           | 1226 MHz                         |
| Operator  |                                   |                   |                                  |
| Version   | Edited by<br><b>Ejvind Hansen</b> |                   | Date<br><b>14-09-2018</b>        |
| Size  | Project<br><b>5011406_022D3</b>   |                   | Sheet<br>Id:5/No:5, 5/5          |
| AND Version 4.12, Serial No. 14000-1-LP for:<br>Dansk Kabel TV Tegholmegade 1 DK - 0900 København C |                                   |                   | Sheet name<br><b>F.TV.2 grøn</b> |