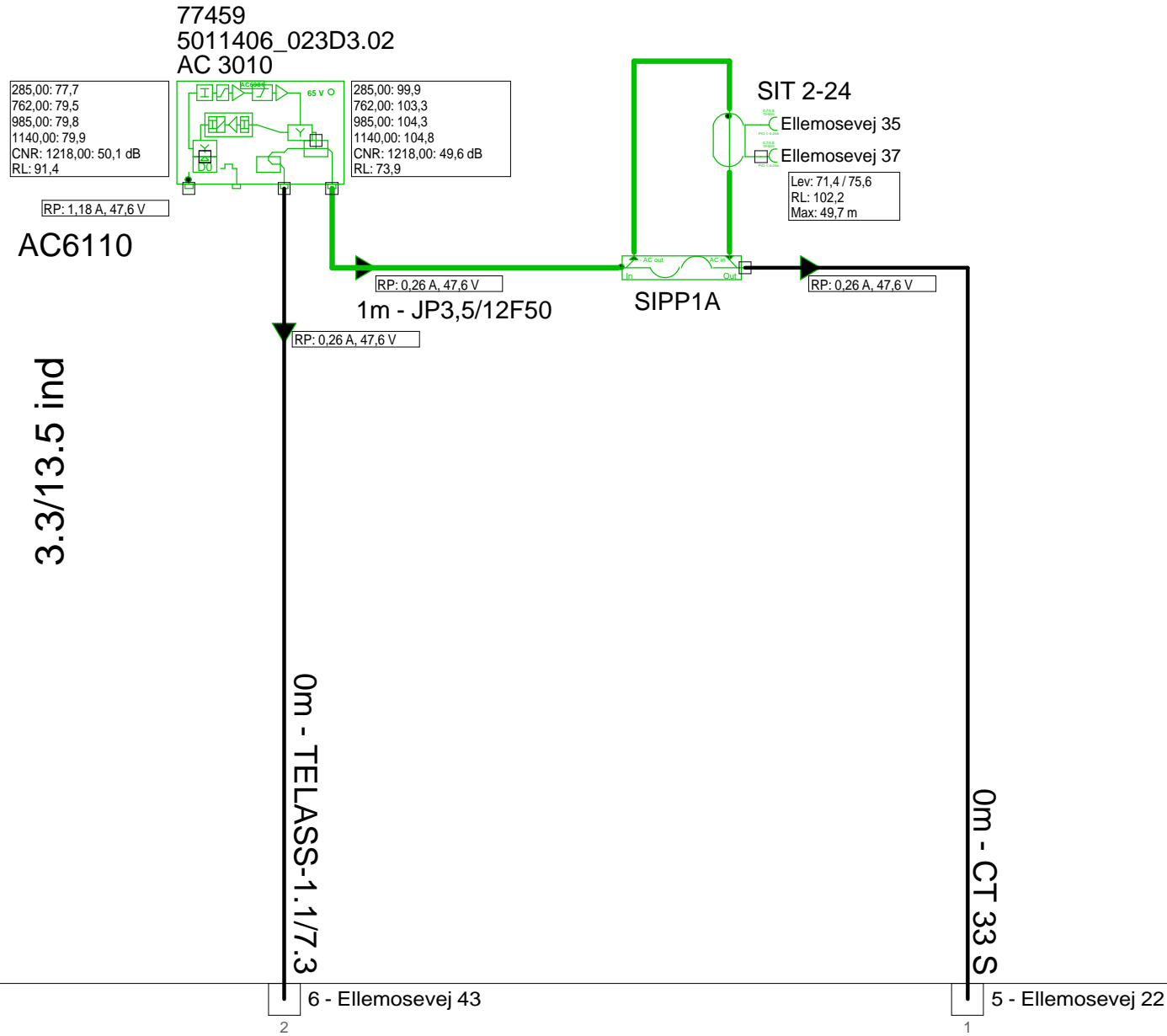


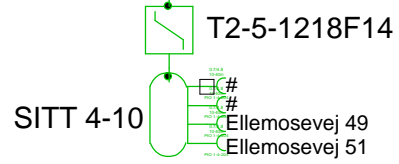
5011406_023D3 - 2 - Ellemosevej 37



Forstærkerliste 5011406_023D3-2		
5011406_023D3.02 (77459) / AC 3010		
A1		
A2	99,7	105,0
TXS004	Input Equali	Equ: -4 dB
ALSC-mode AC(E)3xxx	AGC module	
AC3x10 D0-mode	Output mode	Equ: 7 dB
AC3010 204MHz Returvej		
AC3010-28dB-returin	Modem opt	RV: 28 dB
R04	P1	RPad: 4 dB
CXF204		
CXF204		
AC6124		
AC6981		
AC6120		

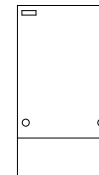
Antenna Installation/Network		
Operator		
Version	Edited by Ejvind Hansen	Date 10-09-2018
Size	Project 5011406_023D3	Sheet Id:2/No:2, 2/9
AND Version 4.12, Serial No. 14000-1-LP for: Dansk Kabel TV Teglhølmegade 1 DK - 0900 København C		Sheet name 5011406_023D

0m - TELASS-1.1/7.3



Lev: 68,2 / 76,4
 RL: 102,0
 Max: 52,3 m

F.TV.2 grøn



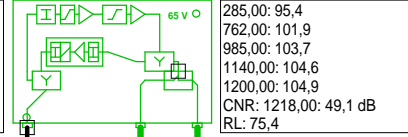
4 - Ellemosevej 43

Antenna Installation/Network		Minimum Frequency	Maximum Frequency
		267 MHz	1226 MHz
Operator			
Version	Edited by Ejvind Hansen		Date 10-09-2018
Size	Project 5011406_023D3		Sheet Id:3/No:3, 3/9
AND Version 4.12, Serial No. 14000-1-LP for: Dansk Kabel TV Tegholmegade 1 DK - 0900 København C			Sheet name F.TV.2 grøn

5011406_023D3 - 4 - Ellemosevej 43

5011406_023D3.LE.01
Hargon 351

285,00: 78,1
762,00: 76,5
985,00: 75,2
1140,00: 74,0
1200,00: 73,6
CNR: 1218,00: 49,6 dB
RL: 94,4



285,00: 95,4
762,00: 101,9
985,00: 103,7
1140,00: 104,6
1200,00: 104,9
CNR: 1218,00: 49,1 dB
RL: 75,4

T10-5-1218F14



Lev: 67,9 / 77,7
RL: 102,6
Max: 53,5 m

0m - TELASS-1.1/7.3

0m - TELASS-1.1/7.3

6 - Ellemosevej 43

3 - Ellemosevej 49

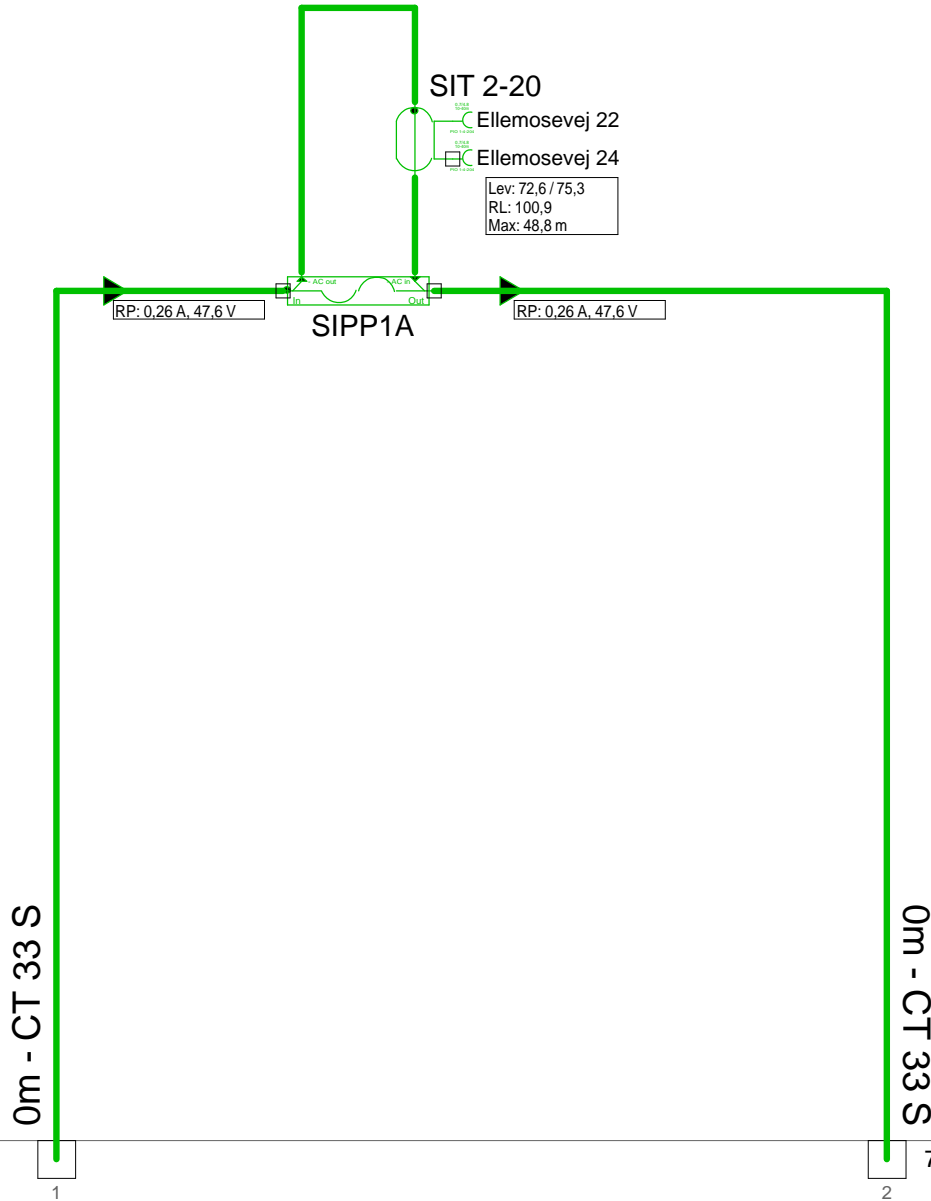
Forstærkerliste 5011406_023D3-4		
5011406_023D3.LE.01 / Hargon 351		
A1	95,1	105,0
EQ10dB 1218MHz	Input equ/att	Equ: 10 dB
AT0dB	Attenuator	Pad: 0 dB
CS1218-3T	Equalizer	Equ: -4 dB
AT4dB	Interstage at	Pad: 4 dB
EQ13dB 1218MHz	Interstage e	Equ: 13 dB
Vector returvej		
Vector returvej 204MHz	Modem opt	RV: 26 dB
AT5dB	Attenuator	RPad: 5 dB
Vector returvejs udg.reg	Upstream r	RV: 0 dB
AT2dB	Attenuator	RPad: 2 dB
EQ 5dB 204MHz	Equalizer	REqu: 5 dB
Filter ind 204MHz retur		
Filter ud 204MHz retur		
TO17T		

KSAØ 301509



Antenna Installation/Network		
Operator		
Version	Edited by Ejvind Hansen	Date 10-09-2018
Size	Project 5011406_023D3	Sheet Id:4/No:4, 4/9
AND Version 4.12, Serial No. 14000-1-LP for: Dansk Kabel TV Tegholmmsgade 1 DK - 0900 København C		Sheet name KSAØ 301509/5011406_023D3

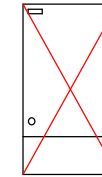
5011406_023D3 - 5 - Ellemosevej 22



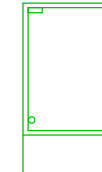
2 - Ellemosevej 37

7 - Ellemosevej 28

F.TV.2 grøn

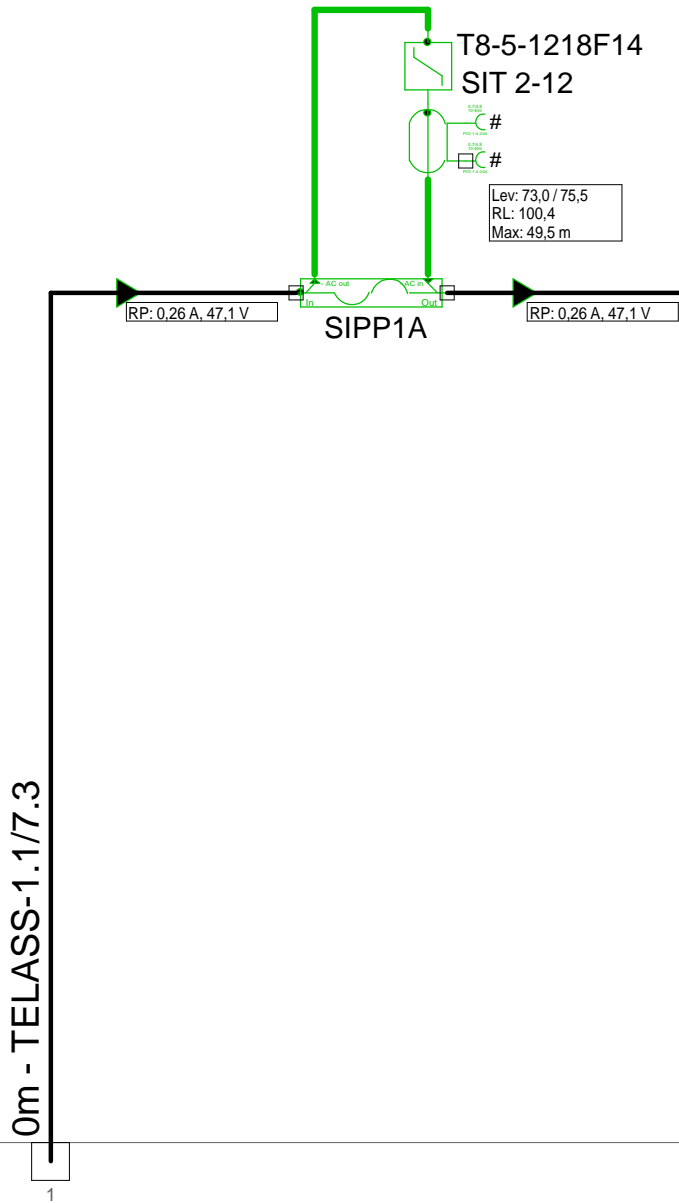


KSAØ 301204
KS3012VSP-AL



Antenna Installation/Network		Minimum Frequency	Maximum Frequency
		267 MHz	1226 MHz
Operator			
Version	Edited by Ejvind Hansen		Date 10-09-2018
Size	Project 5011406_023D3		Sheet Id:5/No:5, 5/9
AND Version 4.12, Serial No. 14000-1-LP for: Dansk Kabel TV Tegholmegade 1 DK - 0900 København C			Sheet name F.TV.2 grøn/udtak, stuKSAØ 301204

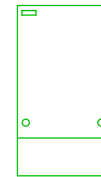
5011406_023D3 - 6 - Ellemosevej 41



2 - Ellemosevej 37

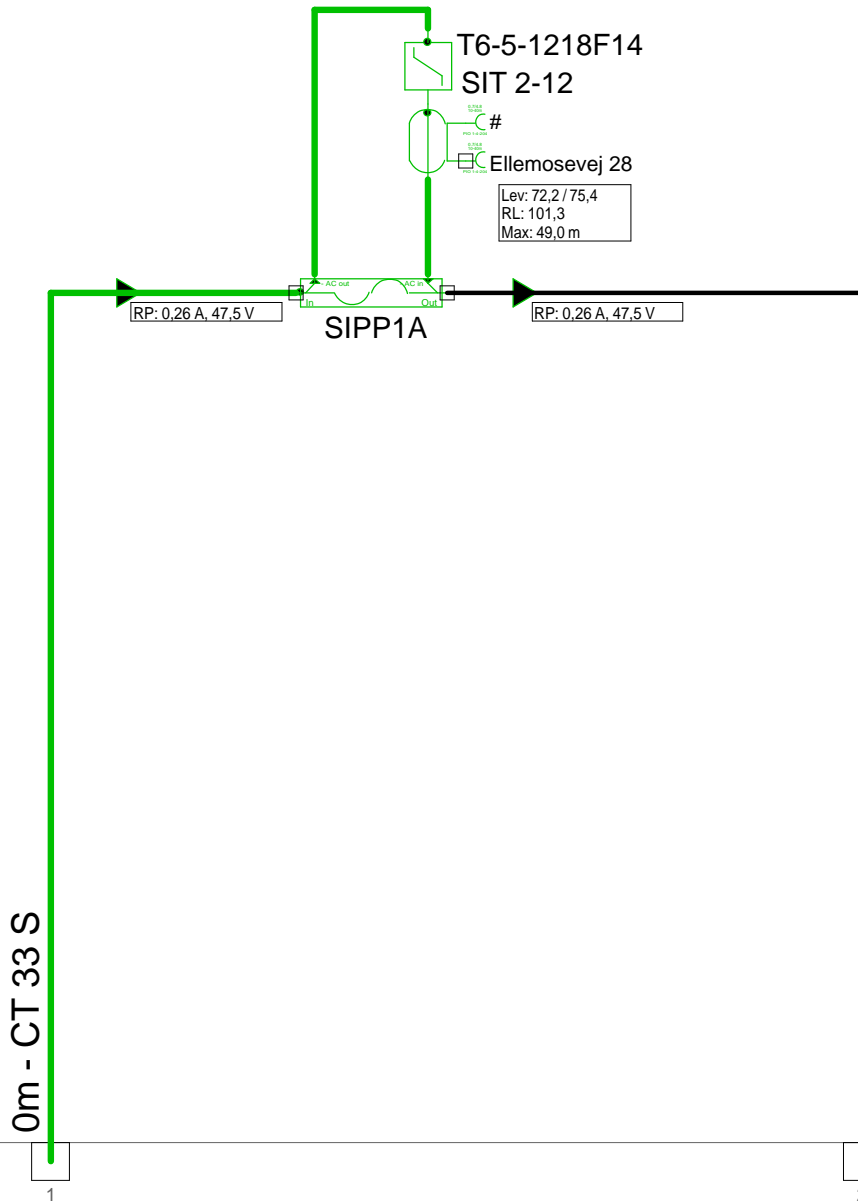
4 - Ellemosevej 43

F.TV.2 grøn

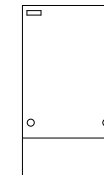


Antenna Installation/Network		Minimum Frequency	Maximum Frequency
		267 MHz	1226 MHz
Operator			
Version	Edited by Ejvind Hansen		Date 10-09-2018
Size	Project 5011406_023D3		Sheet Id:6/No:6, 6/9
AND Version 4.12, Serial No. 14000-1-LP for: Dansk Kabel TV Tegholmegade 1 DK - 0900 København C			Sheet name F.TV.2 grøn

5011406_023D3 - 7 - Ellemosevej 26



KSAØ 301204

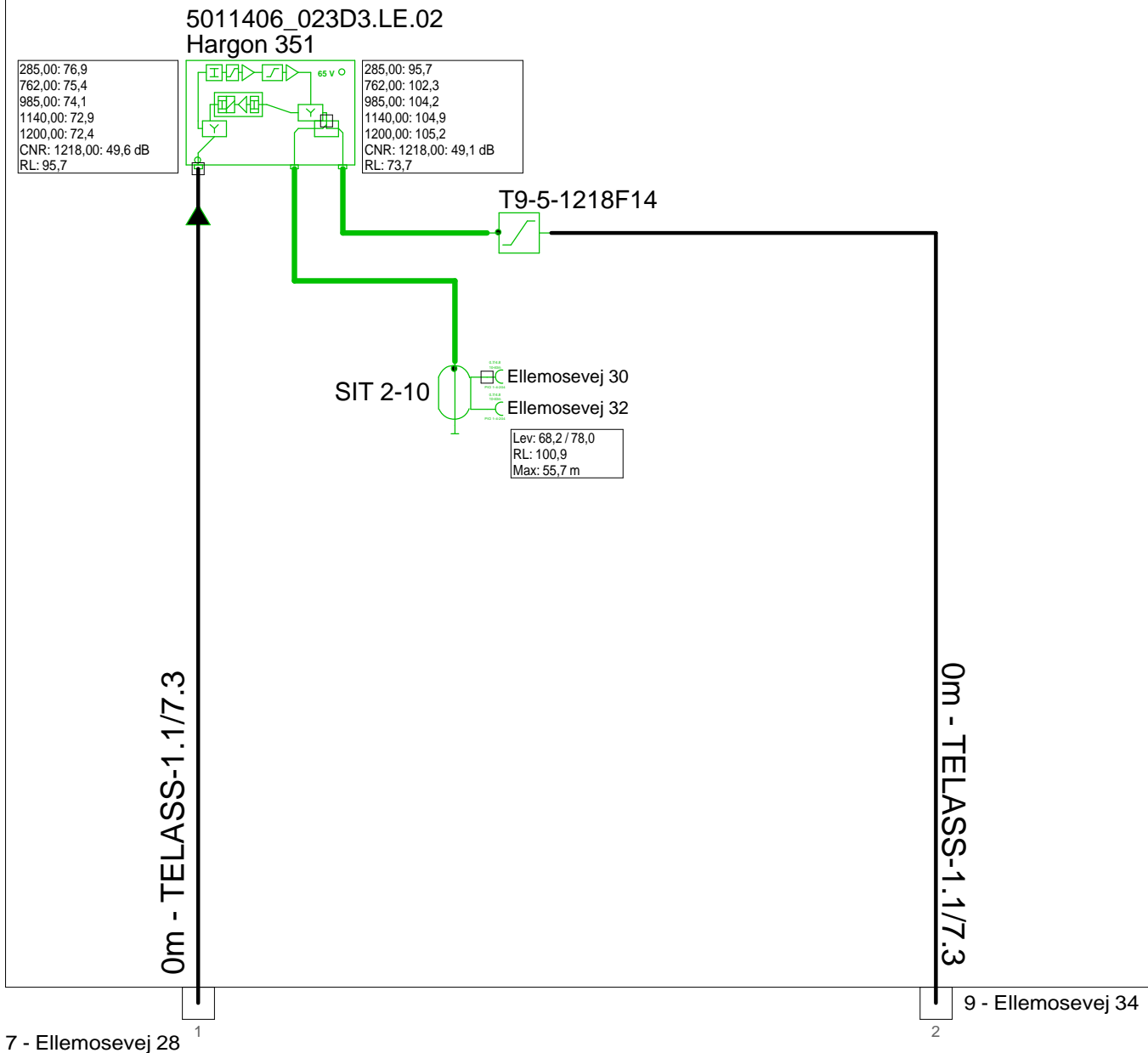


5 - Ellemosevej 22

8 - Ellemosevej 30

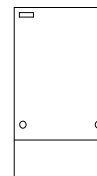
Antenna Installation/Network		Minimum Frequency	Maximum Frequency
		267 MHz	1226 MHz
Operator			
Version	Edited by Ejvind Hansen		Date 10-09-2018
Size	Project 5011406_023D3		Sheet Id:7/No:7, 7/9
AND Version 4.12, Serial No. 14000-1-LP for: Dansk Kabel TV Tegholmegade 1 DK - 0900 København C			Sheet name KSAØ 3012

5011406_023D3 - 8 - Ellemosevej 30



Forstærkerliste 5011406_023D3-8		
5011406_023D3.LE.02 / Hargon 351		
A1	95,5	105,3
EQ6dB 1218MHz	Input equ/att	Equ: 6 dB
AT2dB	Attenuator	Pad: 2 dB
EQ0dB 1218MHz	Equalizer	Equ: 0 dB
AT4dB	Interstage at	Pad: 4 dB
EQ13dB 1218MHz	Interstage e	Equ: 13 dB
Vector returvej		
Vector returvej 204MHz	Modem opt	RV: 26 dB
AT4dB	Attenuator	RPad: 4 dB
Vector returvejs udg.reg	Upstream r	RV: 0 dB
AT0dB	Attenuator	RPad: 0 dB
EQ 4dB 204MHz	Equalizer	REqu: 4 dB
Filter ind 204MHz retur		
Filter ud 204MHz retur		
TO17T		

KSAØ 301509

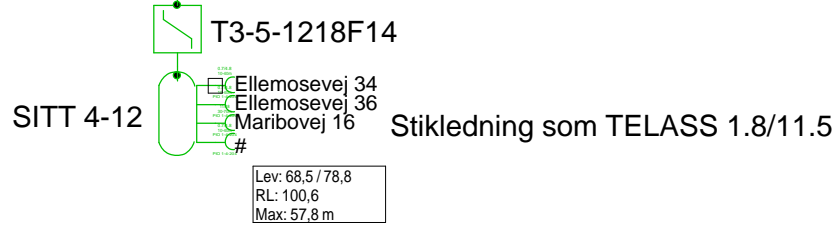


7 - Ellemosevej 28 1

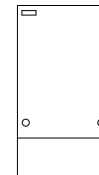
9 - Ellemosevej 34 2

Antenna Installation/Network		
Operator		
Version	Edited by Ejvind Hansen	Date 10-09-2018
Size	Project 5011406_023D3	Sheet Id:8/No:8, 8/9
AND Version 4.12, Serial No. 14000-1-LP for: Dansk Kabel TV Teglhølmegade 1 DK - 0900 København C		Sheet name KSAØ 301509/5011406_023D3

0m - TELASS-1.1/7.3



F.TV.2 grøn



8 - Ellemosevej 30

Antenna Installation/Network		Minimum Frequency	Maximum Frequency
		267 MHz	1226 MHz
Operator			
Version	Edited by Ejvind Hansen		Date 10-09-2018
Size	Project 5011406_023D3		Sheet Id:9/No:9, 9/9
AND Version 4.12, Serial No. 14000-1-LP for: Dansk Kabel TV Tegholmegade 1 DK - 0900 København C			Sheet name F.TV.2 grøn