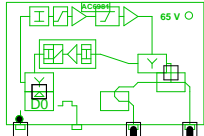


5011406_024D3 - 2 - Tuekærvej 22

77460
5011406_024D3.02
AC 3010

285,00: 74,9
762,00: 77,7
985,00: 78,8
1140,00: 79,5
CNR: 450,00: 49,9 dB
RL: 94,5



285,00: 99,9
762,00: 102,8
985,00: 104,0
1140,00: 104,7
CNR: 450,00: 49,4 dB
RL: 73,2

RP: 1,27 A, 48,0 V

AC6113

LÜBCKE 193 her

RP: 0,36 A, 48,0 V

RP: 0,25 A, 48,0 V

0m - 3.3/13.5 CER

0m - TELASS 1.8/11.5

11 - Tuekærvej 18

2

5 - Tuekærvej 17

1

Forstærkerliste 5011406_024D3-2

5011406_024D3.02 (77460) / AC 3010		
A1		
A2	99,7	105,0
TXS008	Input Equali	Equ: -8 dB
ALSC-mode AC(E)3xxx	AGC module	
AC3x10 D0-mode	Output mode	Equ: 7 dB
AC3010 204MHz Returvej		
AC3010-28dB-returin	Modem opt	RV: 28 dB
R03	P1	RPad: 3 dB
CXF204		
CXF204		
AC6124		
AC6981		
AC6120		

Antenna Installation/Network

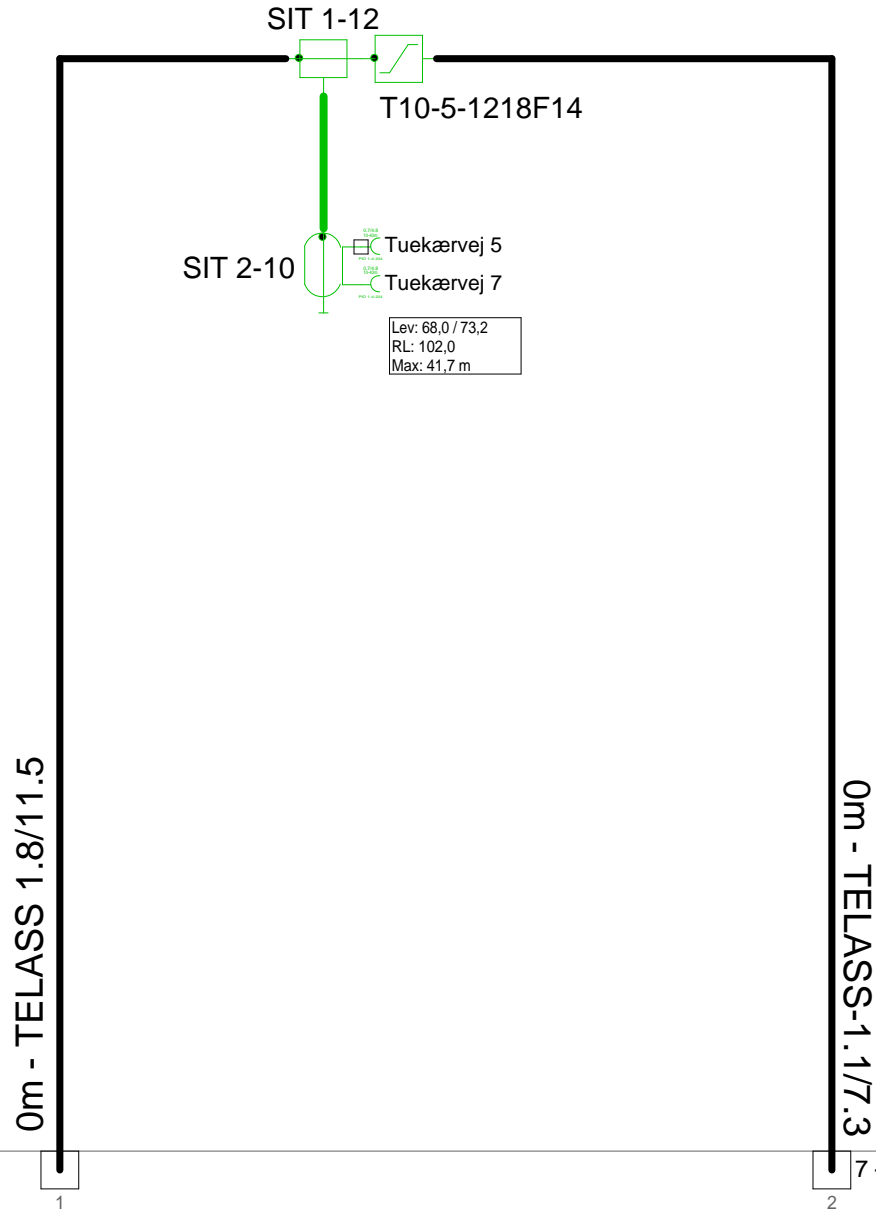
Operator

Version	Edited by	Date
	Ejvind Hansen	19-11-2018
Size	Project	Sheet
	5011406_024D3	Id:2/No:2, 2/11

AND Version 4.12, Serial No. 14000-1-LP for:

Sheet name

5011406_024D3 - 3 - Tuekærvej 7



4 - Tuekærvej 9

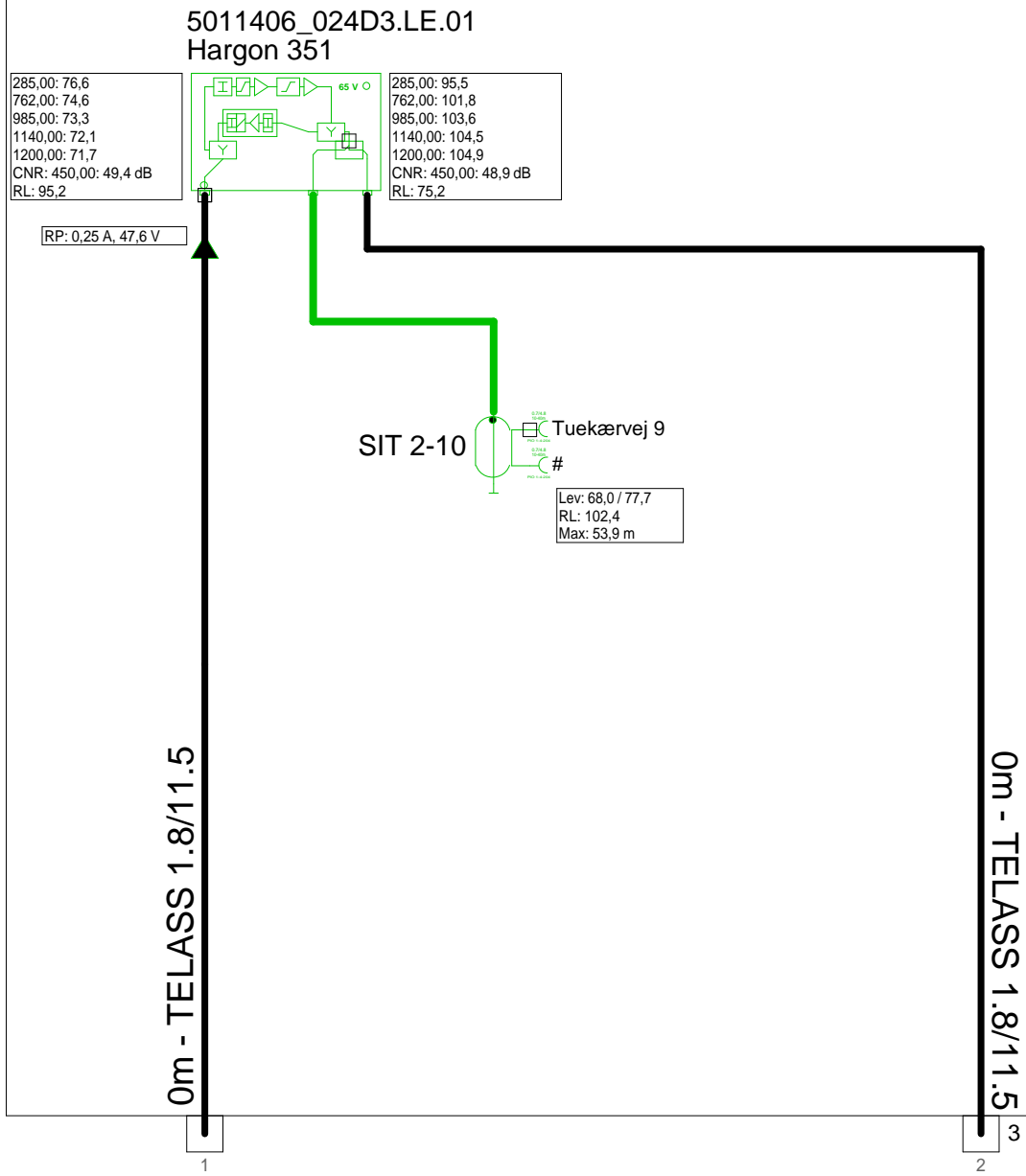
7 - Tuekærvej 3

F.TV.2 grøn



Antenna Installation/Network	Minimum Frequency 267 MHz	Maximum Frequency 1226 MHz
Operator		
Version	Edited by Ejvind Hansen	Date 19-11-2018
Size	Project 5011406_024D3	Sheet Id:3/No:3, 3/11
AND Version 4.12, Serial No. 14000-1-LP for:		Sheet name

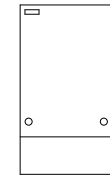
5011406_024D3 - 4 - Tuekærvej 9



Forstærkerliste 5011406_024D3-4

5011406_024D3.LE.01 / Hargon 351		
A1	95,2	105,0
AT0dB	Input equ/att	Pad: 0 dB
AT2dB	Attenuator	Pad: 2 dB
EQ7dB 1218MHz	Equalizer	Equ: 7 dB
AT4dB	Interstage at	Pad: 4 dB
EQ13dB 1218MHz	Interstage e	Equ: 13 dB
Vector returvej		
Vector returvej 204MHz	Modem opt	RV: 26 dB
AT5dB	Attenuator	RPad: 5 dB
Vector returvejs udg.reg	Upstream r	RV: 0 dB
AT1dB	Attenuator	RPad: 1 dB
EQ 5dB 204MHz	Equalizer	REqu: 5 dB
Filter ind 204MHz retur		
Filter ud 204MHz retur		
TO17T		

KSAØ 301509

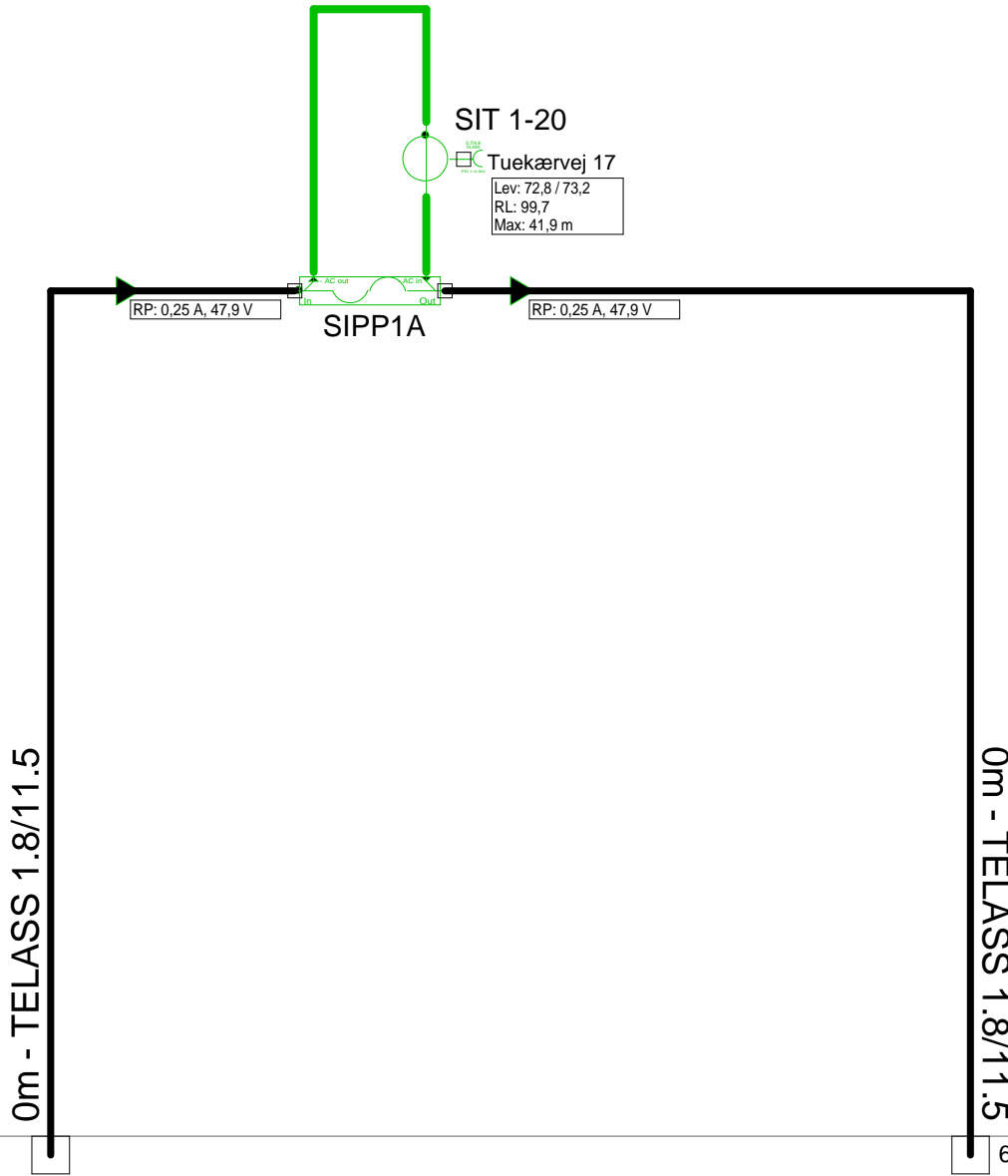


Antenna Installation/Network

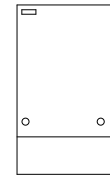
Operator

Version	Edited by	Date
	Ejvind Hansen	19-11-2018
Size	Project	Sheet
	5011406_024D3	Id:4/No:4, 4/11

5011406_024D3 - 5 - Tuekærvej 17



KSAØ 301204

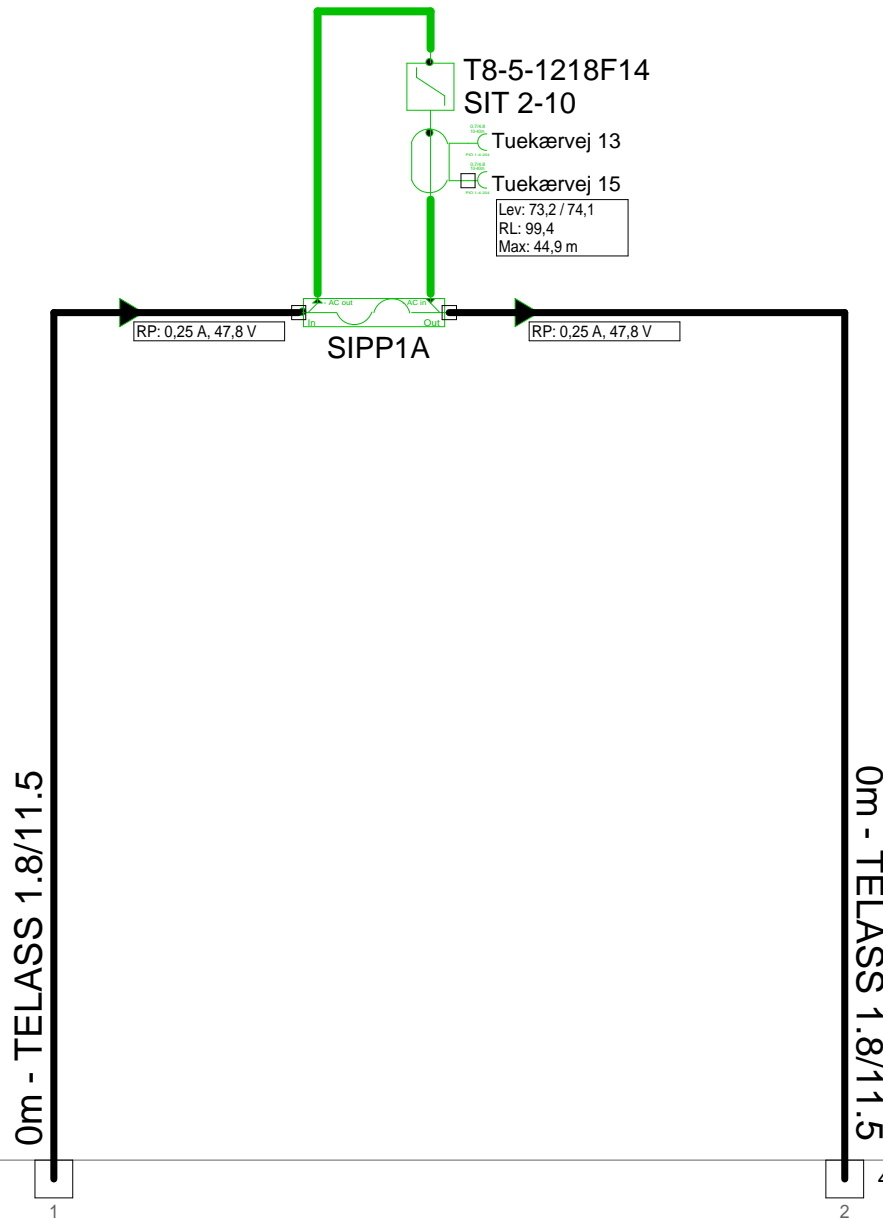


1
2 - Tuekærvej 22

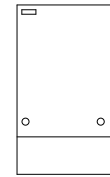
2
6 - Tuekærvej 13

Antenna Installation/Network		Minimum Frequency	Maximum Frequency
		267 MHz	1226 MHz
Operator			
Version	Edited by	Date	
	Ejvind Hansen	19-11-2018	
Size	Project	Sheet	
	5011406_024D3	Id:5/No:5, 5/11	
AND Version 4.12, Serial No. 14000-1-LP for:			Sheet name

5011406_024D3 - 6 - Tuekærvej 13



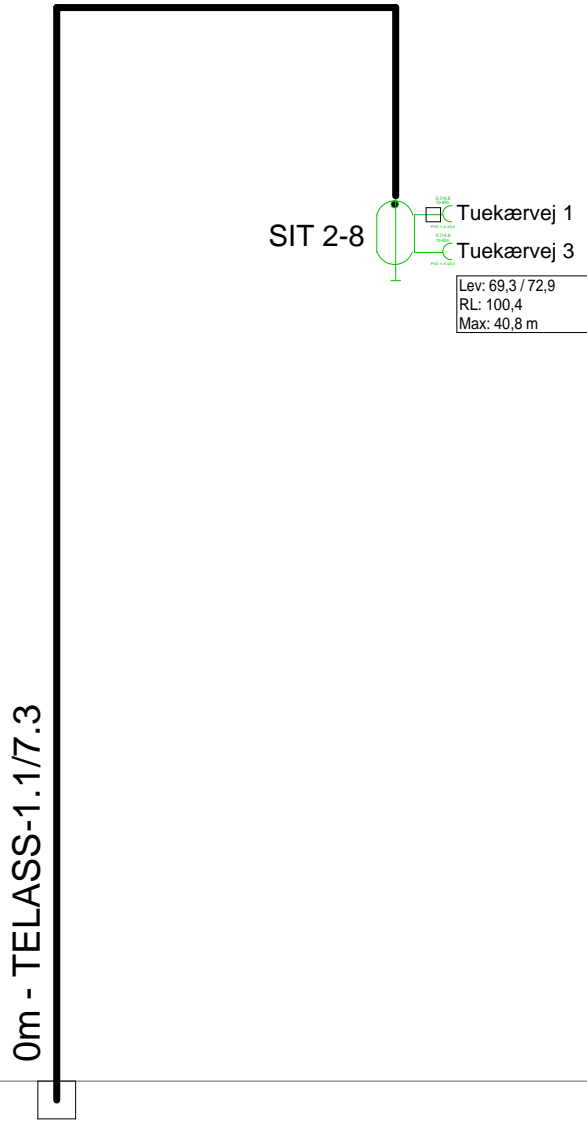
KSAØ 301204



5 - Tuekærvej 17

4 - Tuekærvej 9

Antenna Installation/Network		Minimum Frequency	Maximum Frequency
		267 MHz	1226 MHz
Operator			
Version	Edited by Ejvind Hansen		Date 19-11-2018
Size	Project 5011406_024D3		Sheet Id:6/No:6, 6/11
AND Version 4.12, Serial No. 14000-1-LP for:			Sheet name



3 - Tuekærvej 7

F.TV.2 grøn

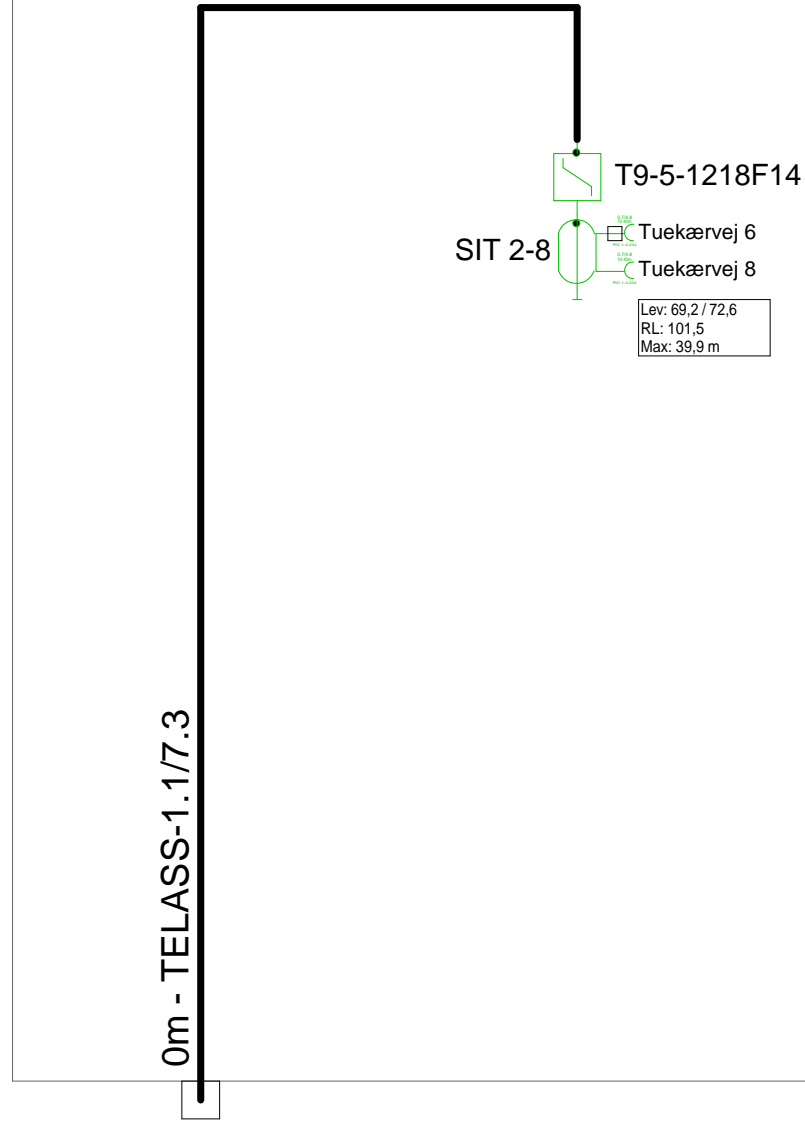


Antenna Installation/Network	Minimum Frequency 267 MHz	Maximum Frequency 1226 MHz
------------------------------	-------------------------------------	--------------------------------------

Operator

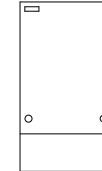
Version	Edited by Ejvind Hansen	Date 19-11-2018
---------	-----------------------------------	---------------------------

Size	Project 5011406_024D3	Sheet Id:7/No:7, 7/11
------	---------------------------------	--------------------------



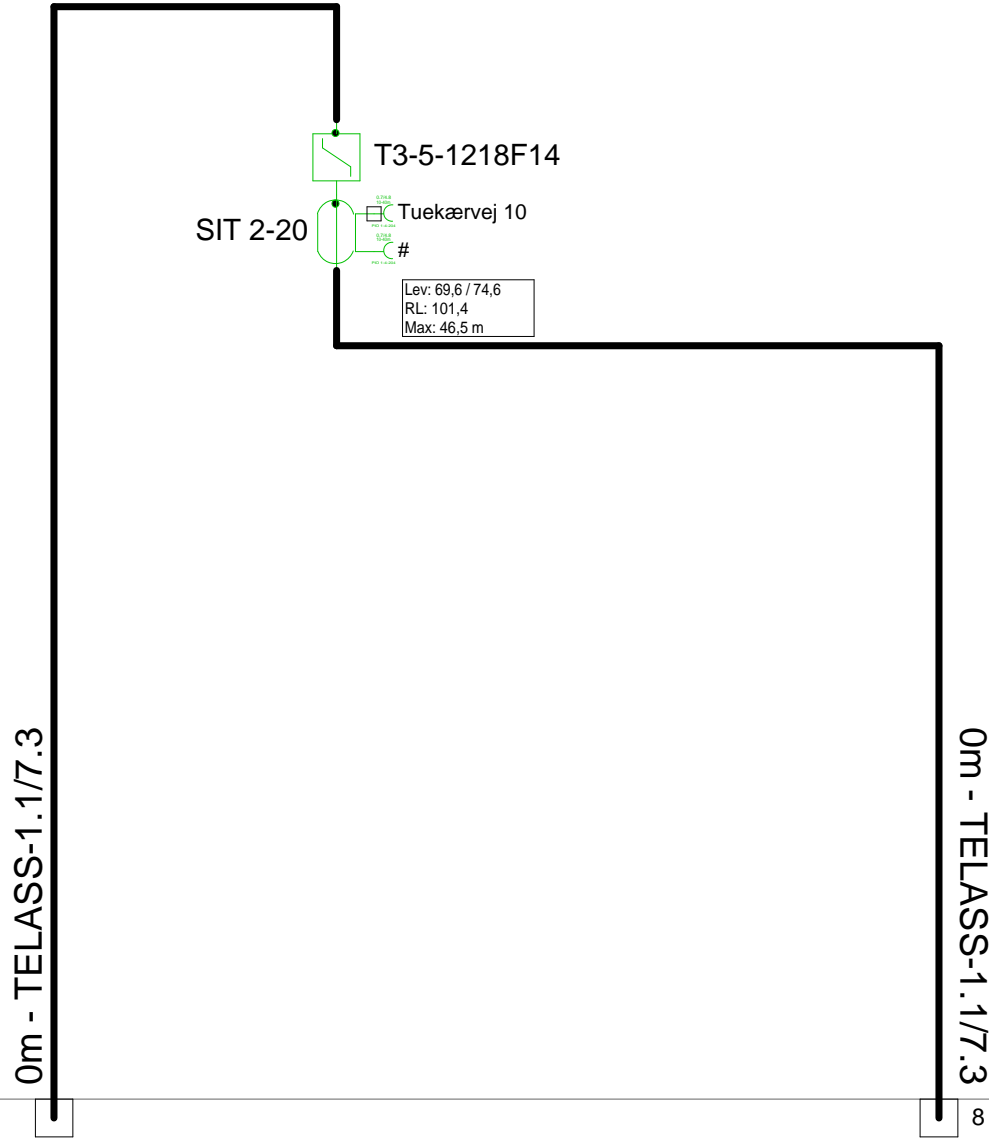
9 - Tuekærvej 10

F.TV.2 grøn



Antenna Installation/Network		Minimum Frequency 267 MHz	Maximum Frequency 1226 MHz
Operator			
Version	Edited by Ejvind Hansen		Date 19-11-2018
Size	Project 5011406_024D3		Sheet Id:8/No:8, 8/11
AND Version 4.12, Serial No. 14000-1-LP for:			Sheet name

5011406_024D3 - 9 - Tuekærvej 10



10 - Tuekærvej 14

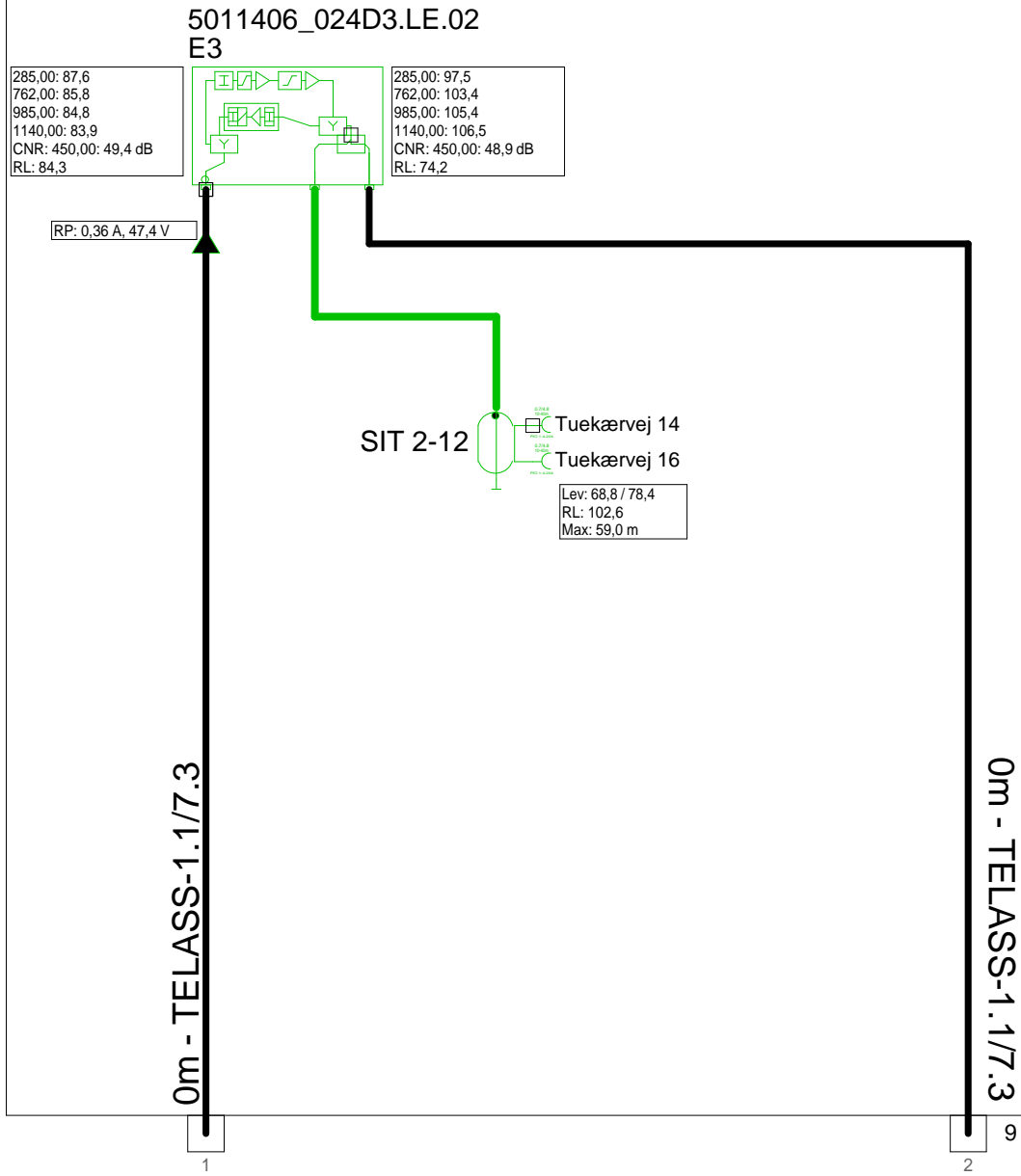
8 - Tuekærvej 6

F.TV.2 grøn



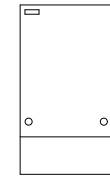
Antenna Installation/Network		Minimum Frequency	Maximum Frequency
		267 MHz	1226 MHz
Operator			
Version	Edited by Ejvind Hansen		Date 19-11-2018
Size	Project 5011406_024D3		Sheet Id:9/No:9, 9/11
AND Version 4.12, Serial No. 14000-1-LP for:			Sheet name

5011406_024D3 - 10 - Tuekærvej 14



Forstærkerliste 5011406_024D3-10		
5011406_024D3.LE.02 / E3		
A1	97,2	107,0
E3 Flat Input	Cable Simul	Equ: -0 dB
E3 Low Gain	Gain	Pad: 6 dB
E3 Equalizer	Equalizer	Equ: 13 dB
E3 return amplifier		
E3-23dB-returin	Modem opt	RV: 23 dB
CXF204		
CXF204 UA10 (RPad: 4dB)		
AC6115		

KSAØ 301509



11 - Tuekærvej 18

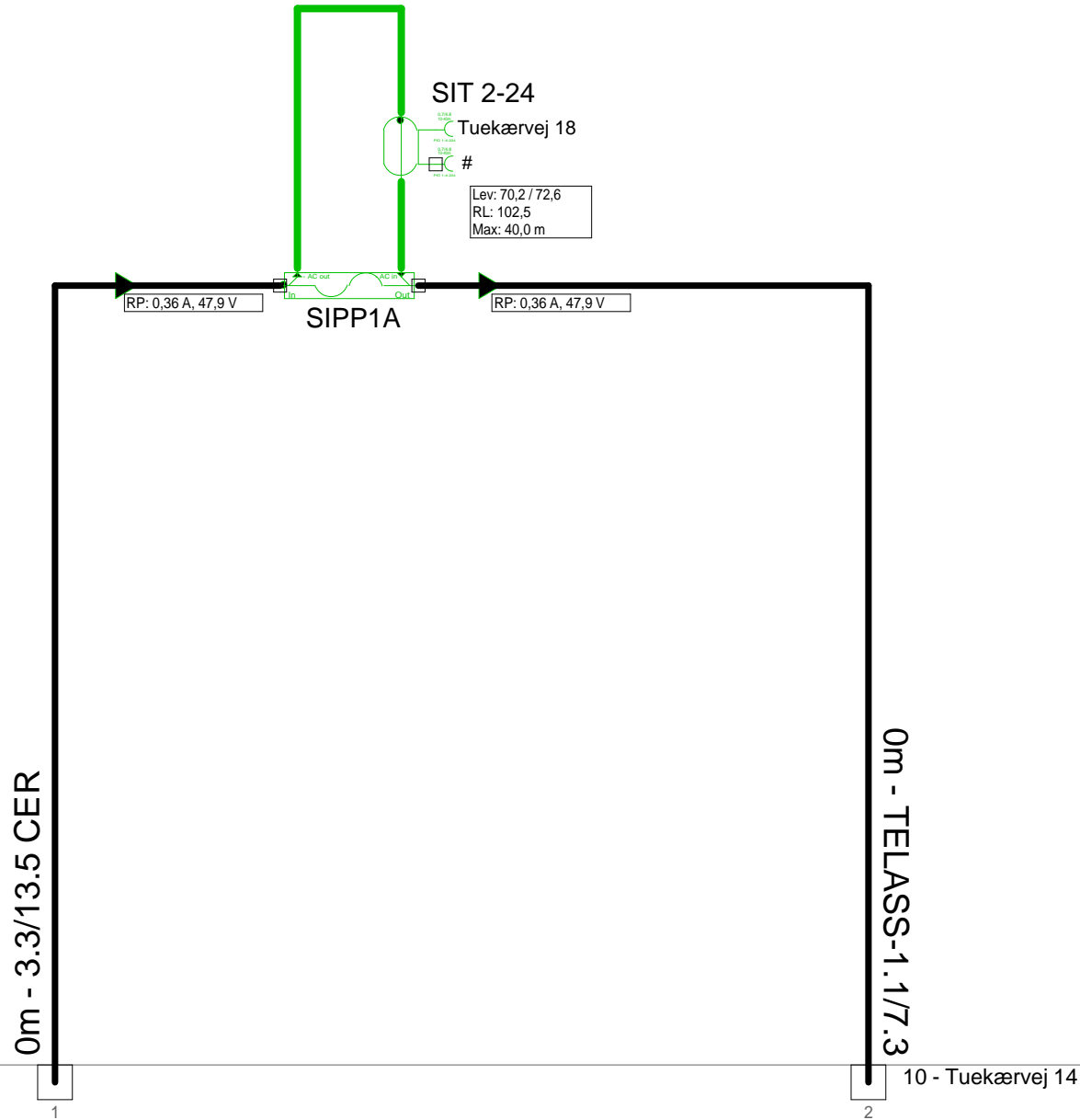
9 - Tuekærvej 10

Antenna Installation/Network

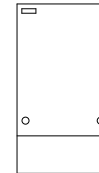
Operator

Version	Edited by Ejvind Hansen	Date 19-11-2018
Size	Project 5011406_024D3	Sheet Id:10/No:10, 10/11

5011406_024D3 - 11 - Tuekærvej 18



KSAØ 301204



1
2 - Tuekærvej 22

2
10 - Tuekærvej 14

Antenna Installation/Network		Minimum Frequency	Maximum Frequency
		267 MHz	1226 MHz
Operator			
Version	Edited by Ejvind Hansen		Date 19-11-2018
Size	Project 5011406_024D3		Sheet Id:11/No:11, 11/11
AND Version 4.12, Serial No. 14000-1-LP for:			Sheet name