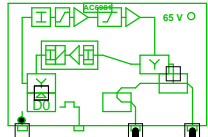


5011406_025D3 - 2 - Tuekærvej 17/Engvej

77461
5011406_025D3.02
AC 3010

285,00: 75,9
762,00: 78,0
985,00: 78,8
1140,00: 79,2
CNR: 450,00: 49,9 dB
RL: 93,4



285,00: 99,9
762,00: 102,9
985,00: 104,0
1140,00: 104,7
CNR: 450,00: 49,4 dB
RL: 72,8

RP: 1,61 A, 48,0 V

AC6124

RP: 0,25 A, 48,0 V

RP: 0,69 A, 48,0 V

0m - TELASS 1.8/11.5

0m - TELASS 1.8/11.5

5 - Tuekærvej 22

2

9 - Tuekærvej 21

1

Forstærkerliste 5011406_025D3-2

5011406_025D3.02 (77461) / AC 3010		
A1		
A2	99,7	105,0
TXS008	Input Equali	Equ: -8 dB
ALSC-mode AC(E)3xxx	AGC module	
AC3x10 D0-mode	Output mode	Equ: 7 dB
AC3010 204MHz Returvej		
AC3010-28dB-returin	Modem opt	RV: 28 dB
R03	P1	RPad: 3 dB
CXF204		
CXF204		
AC6124		
AC6981		
AC6120		

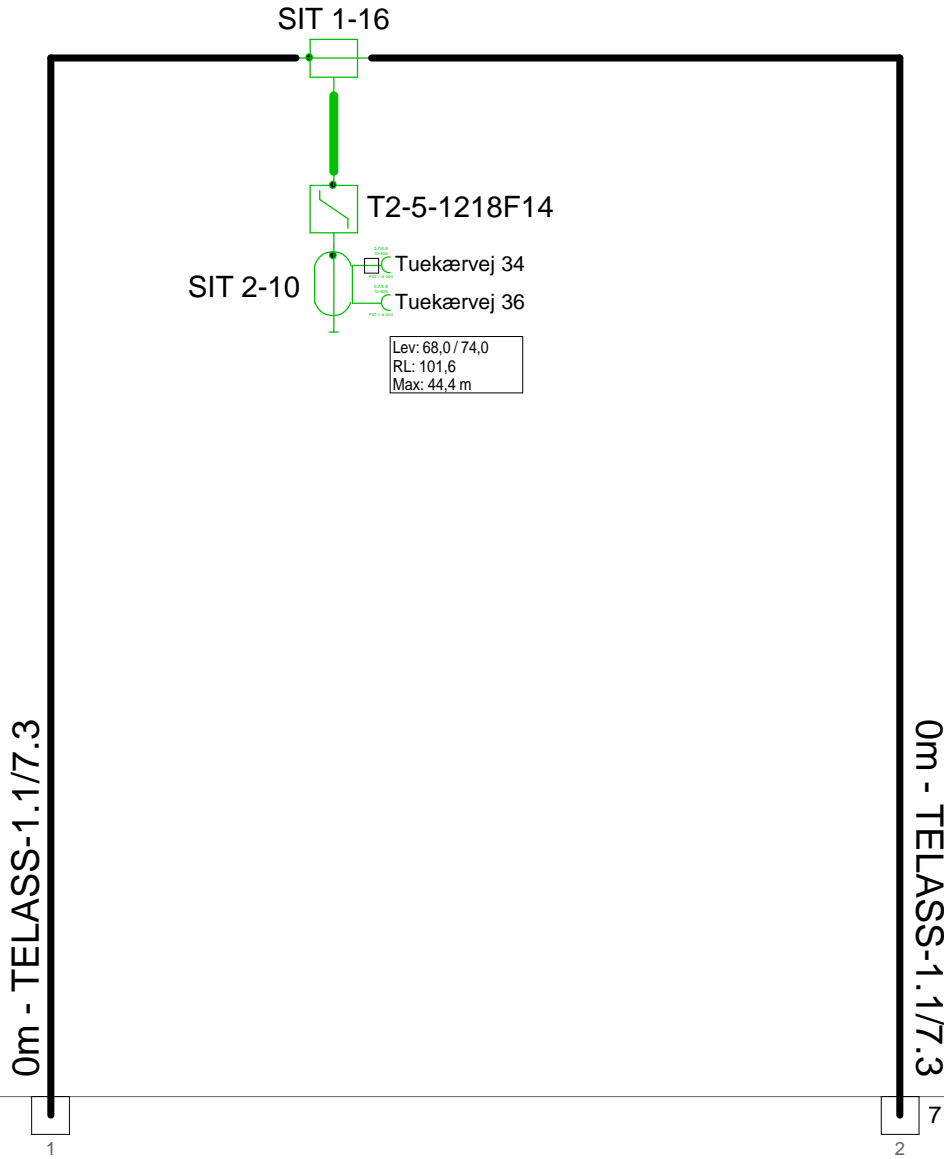
Antenna Installation/Network

Operator

Version	Edited by Ejvind Hansen	Date 11-09-2018
---------	-----------------------------------	---------------------------

Size	Project 5011406_025D3	Sheet Id:2/No:2, 2/13
------	---------------------------------	--------------------------

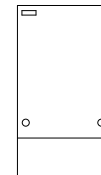
AND Version 4.12, Serial No. 14000-1-LP for: Dansk Kabel TV Teglhølmegade 1 DK - 0900 København C	Sheet name 5011406_025D
---	-----------------------------------



4 - Tuekærvej 30

7 - Tuekærvej 38

F.TV.2 grøn

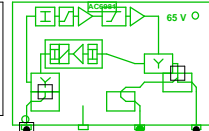


Antenna Installation/Network		Minimum Frequency	Maximum Frequency
		267 MHz	1226 MHz
Operator			
Version	Edited by Ejvind Hansen		Date 11-09-2018
Size	Project 5011406_025D3		Sheet Id:3/No:3, 3/13
AND Version 4.12, Serial No. 14000-1-LP for: Dansk Kabel TV Tegholmegade 1 DK - 0900 København C			Sheet name F.TV.2 grøn

5011406_025D3 - 4 - Tuekærvej 30

77462
5011406_025D3.LE.03
AC 3010

285,00: 75,9
762,00: 74,1
985,00: 72,8
1140,00: 71,8
CNR: 450,00: 49,4 dB
RL: 95,5



285,00: 100,5
762,00: 106,7
985,00: 108,6
1140,00: 109,5
CNR: 450,00: 48,9 dB
RL: 69,8

RP: 0.69 A, 46.0 V

SIT 2-16



Lev: 67,9 / 77,5
RL: 102,1
Max: 53,8 m

0m - TELASS-1.1/7.3

0m - TELASS-1.1/7.3

6 - Tuekærvej 26

3 - Tuekærvej 34

1

2

Forstærkerliste 5011406_025D3-4

5011406_025D3.LE.03 (77462) / AC 3010		
A1	100,2	110,0
ALSC-mode AC(E)3xxx	AGC module	
AC3x10 D3-mode	Output mode	Equ: 13 dB
AC3010 204MHz Returvej		
AC3010-28dB-returin	Modem opt	RV: 28 dB
R00	P1	RPad: 0 dB
AC6110		
CXF204		
CXF204		
AC6115		
AC6981		
AC6120		

KSAØ 301509



Antenna Installation/Network

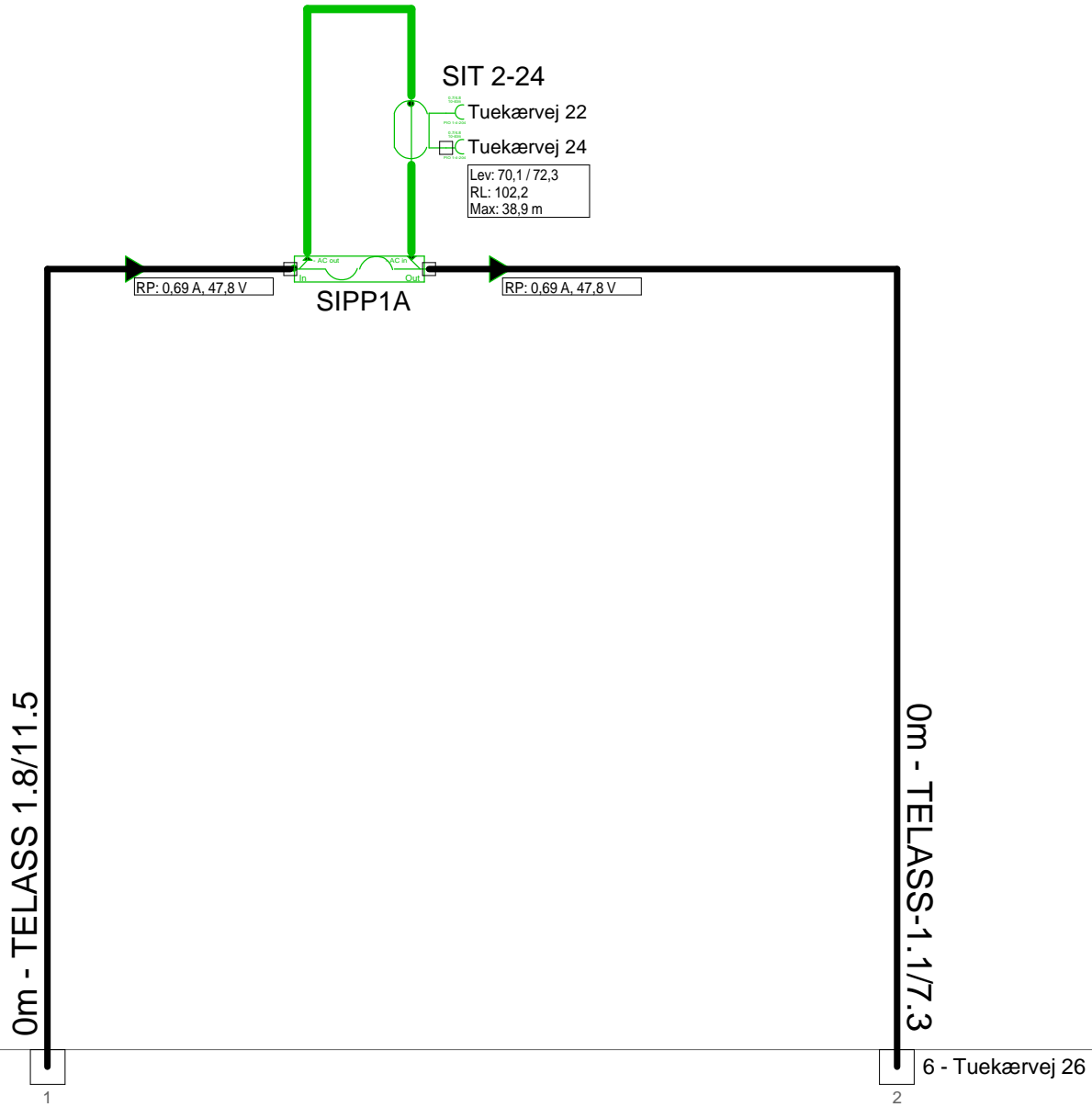
Operator

Version	Edited by Ejvind Hansen	Date 11-09-2018
---------	-----------------------------------	---------------------------

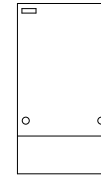
Size	Project 5011406_025D3	Sheet Id:4/No:4, 4/13
------	---------------------------------	--------------------------

AND Version 4.12, Serial No. 14000-1-LP for: Dansk Kabel TV Teglhølmegade 1 DK - 0900 København C	Sheet name KSAØ 3015
--	--------------------------------

5011406_025D3 - 5 - Tuekærvej 22



KSAØ 301204



2 - Tuekærvej 17

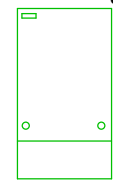
6 - Tuekærvej 26

Antenna Installation/Network		Minimum Frequency	Maximum Frequency
		267 MHz	1226 MHz
Operator			
Version	Edited by Ejvind Hansen		Date 11-09-2018
Size	Project 5011406_025D3		Sheet Id:5/No:5, 5/13
AND Version 4.12, Serial No. 14000-1-LP for: Dansk Kabel TV Teglholmegade 1 DK - 0900 København C			Sheet name KSAØ 3012

5011406_025D3 - 6 - Tuekærvej 26



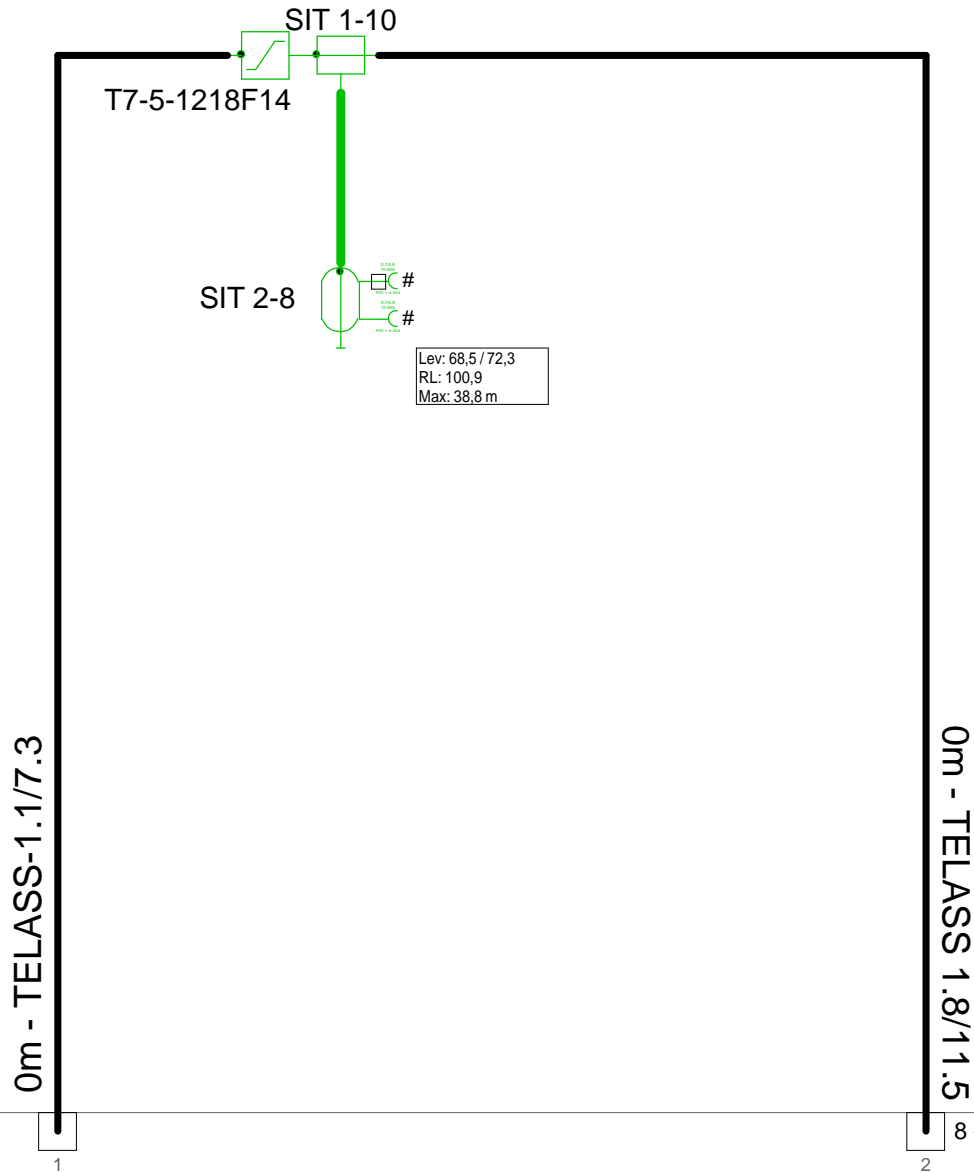
F.TV.2 grøn



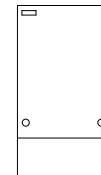
5 - Tuekærvej 22

4 - Tuekærvej 30

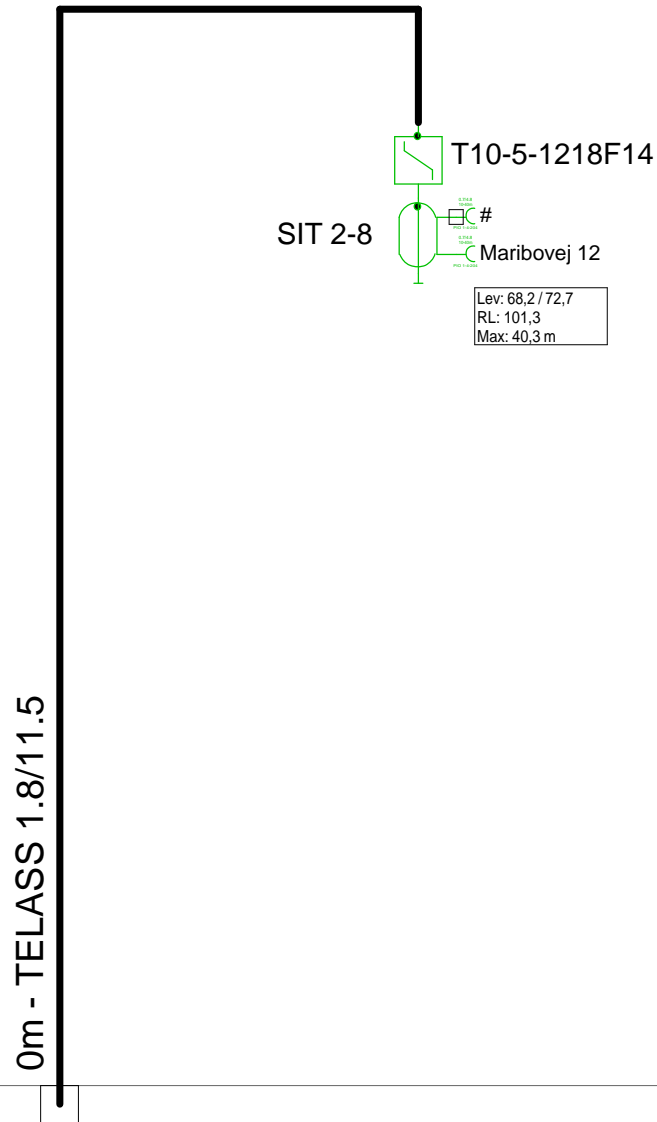
Antenna Installation/Network		Minimum Frequency	Maximum Frequency
		267 MHz	1226 MHz
Operator			
Version	Edited by Ejvind Hansen		Date 11-09-2018
Size	Project 5011406_025D3		Sheet Id:6/No:6, 6/13
AND Version 4.12, Serial No. 14000-1-LP for: Dansk Kabel TV Tegholmegade 1 DK - 0900 København C			Sheet name F.TV.2 grøn



F.TV.2 grøn

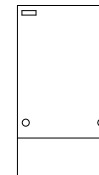


Antenna Installation/Network		Minimum Frequency	Maximum Frequency
		267 MHz	1226 MHz
Operator			
Version	Edited by Ejvind Hansen		Date 11-09-2018
Size	Project 5011406_025D3		Sheet Id:7/No:7, 7/13
AND Version 4.12, Serial No. 14000-1-LP for: Dansk Kabel TV Tegholmegade 1 DK - 0900 København C			Sheet name F.TV.2 grøn



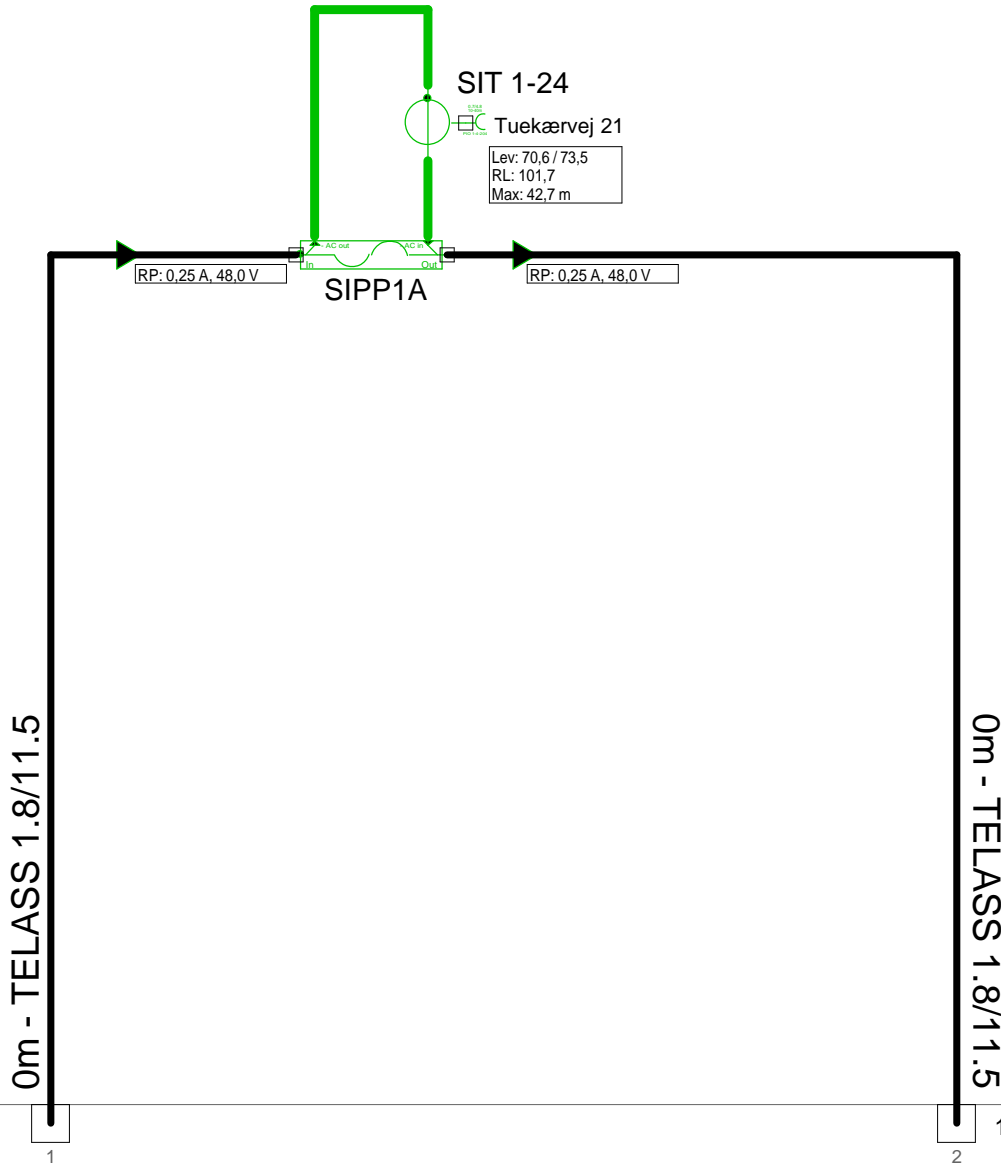
7 - Tuekærvej 38

F.TV.2 grøn

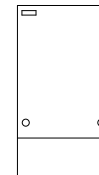


Antenna Installation/Network		Minimum Frequency	Maximum Frequency
		267 MHz	1226 MHz
Operator			
Version	Edited by Ejvind Hansen		Date 11-09-2018
Size	Project 5011406_025D3		Sheet Id:8/No:8, 8/13
AND Version 4.12, Serial No. 14000-1-LP for: Dansk Kabel TV Tegholmegade 1 DK - 0900 København C			Sheet name F.TV.2 grøn

5011406_025D3 - 9 - Tuekærvej 21

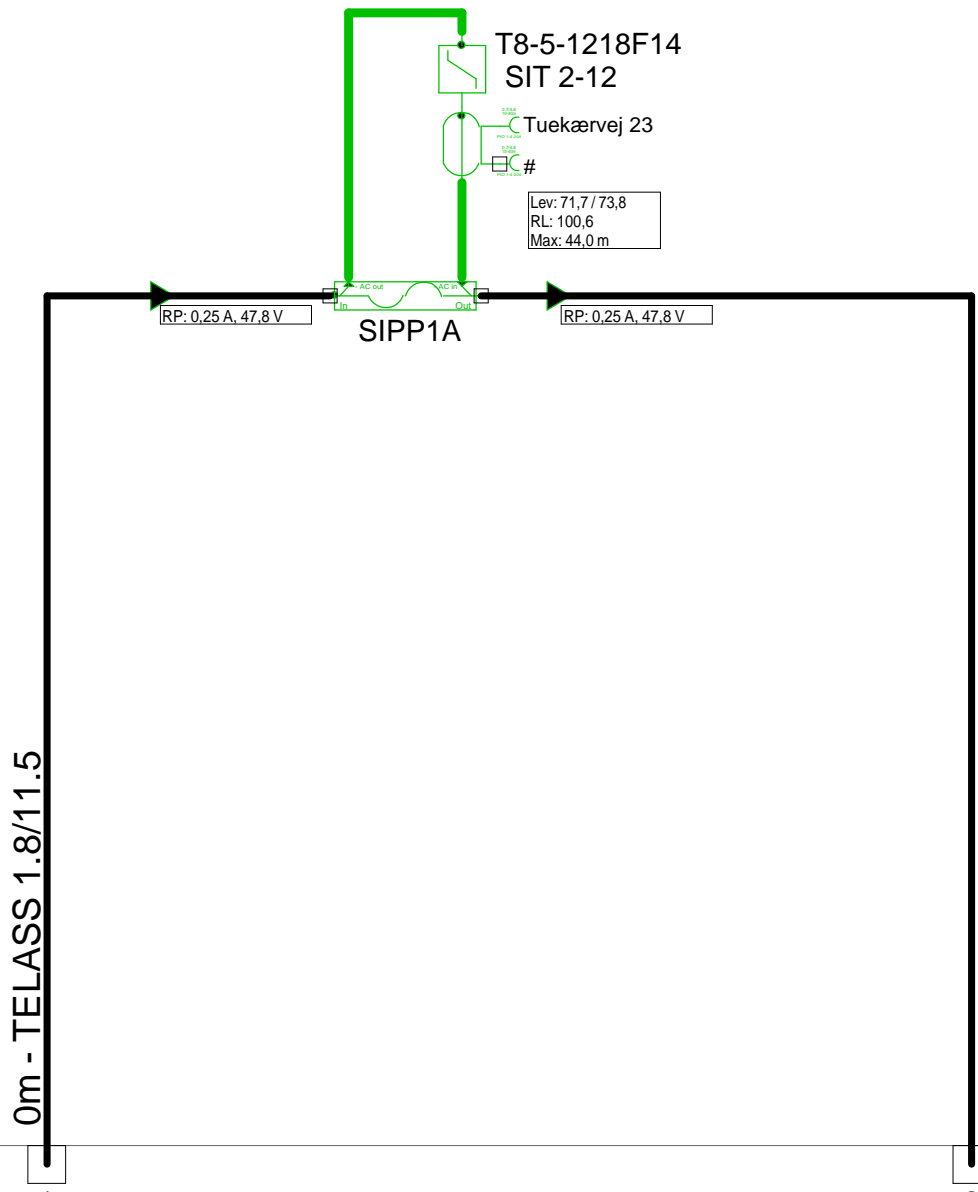


KSAØ 301204

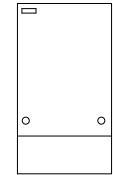


Antenna Installation/Network		Minimum Frequency	Maximum Frequency
		267 MHz	1226 MHz
Operator			
Version	Edited by Ejvind Hansen		Date 11-09-2018
Size	Project 5011406_025D3		Sheet Id:9/No:9, 9/13
AND Version 4.12, Serial No. 14000-1-LP for: Dansk Kabel TV Tegholmegade 1 DK - 0900 København C			Sheet name KSAØ 3012

5011406_025D3 - 10 - Tuekærvej 23



KSAØ 301204



9 - Tuekærvej 21

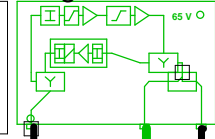
11 - Tuekærvej 27

Antenna Installation/Network		Minimum Frequency	Maximum Frequency
		267 MHz	1226 MHz
Operator			
Version	Edited by Ejvind Hansen		Date 11-09-2018
Size	Project 5011406_025D3		Sheet Id:10/No:10, 10/13
AND Version 4.12, Serial No. 14000-1-LP for: Dansk Kabel TV Teglgolmsgade 1 DK - 0900 København C			Sheet name KSAØ 3012

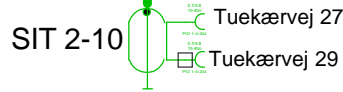
5011406_025D3 - 11 - Tuekærvej 27

5011406_025D3.LE.02
Hargon 351

285,00: 79,1
762,00: 78,3
985,00: 77,6
1140,00: 76,8
1200,00: 76,5
CNR: 450,00: 49,4 dB
RL: 92,6



285,00: 95,5
762,00: 101,6
985,00: 103,5
1140,00: 104,5
1200,00: 104,9
CNR: 450,00: 48,9 dB
RL: 74,6



Lev: 68,0 / 77,7
RL: 101,9
Max: 53,9m

0m - TELASS 1.8/11.5

0m - TELASS-1.1/7.3

10 - Tuekærvej 23

1

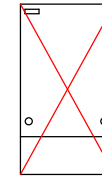
12 - Tuekærvej 31

2

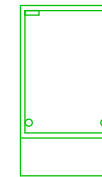
Forstærkerliste 5011406_025D3-11

5011406_025D3.LE.02 / Hargon 351		
A1	95,2	105,0
EQ10dB 1218MHz	Input equ/att	Equ: 10 dB
AT0dB	Attenuator	Pad: 0 dB
CS1218-6T	Equalizer	Equ: -7 dB
AT4dB	Interstage a	Pad: 4 dB
EQ13dB 1218MHz	Interstage	Equ: 13 dB
Vector returvej		
Vector returvej 204MHz	Modem opt	RV: 26 dB
AT5dB	Attenuator	RPad: 5 dB
Vector returvejs udg.re	Upstream r	RV: 0 dB
AT3dB	Attenuator	RPad: 3 dB
EQ 3dB 204MHz	Equalizer	REqu: 3 dB
Filter ind 204MHz retur		
Filter ud 204MHz retur		
TO17T		

KSAØ 301204

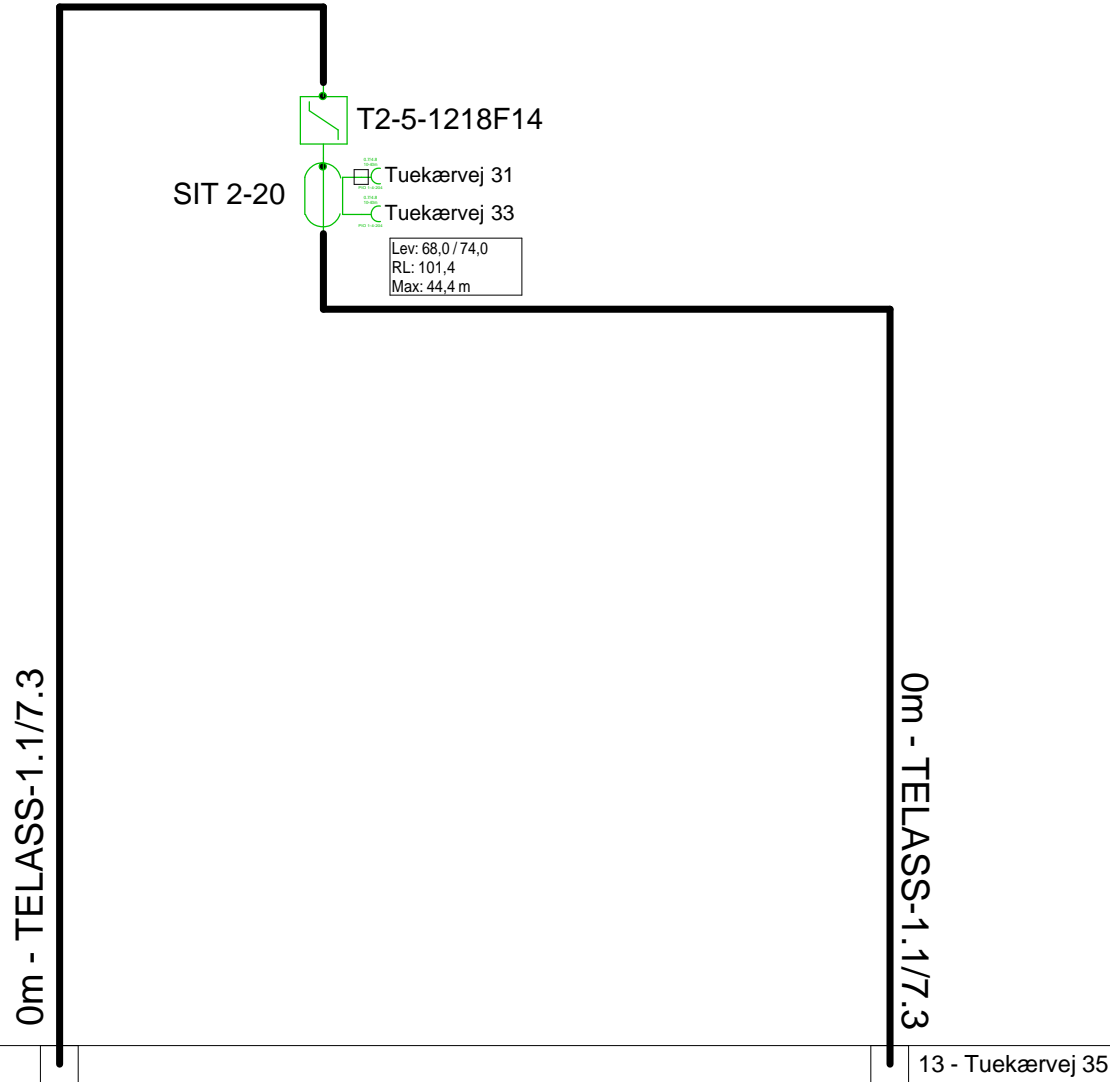


KSAØ 301509 GL
KS3015VSP-AL



Antenna Installation/Network	Minimum Frequency	Maximum Frequency
	267 MHz	1226 MHz

Operator		
Version	Edited by Ejvind Hansen	Date 11-09-2018
Size	Project 5011406_025D3	Sheet Id:11/No:11, 11/13
AND Version 4.12, Serial No. 14000-1-LP for: Dansk Kabel TV Tegholmegade 1 DK - 0900 København C		Sheet name



KSAØ 301509



11 - Tuekærvej 27

13 - Tuekærvej 35

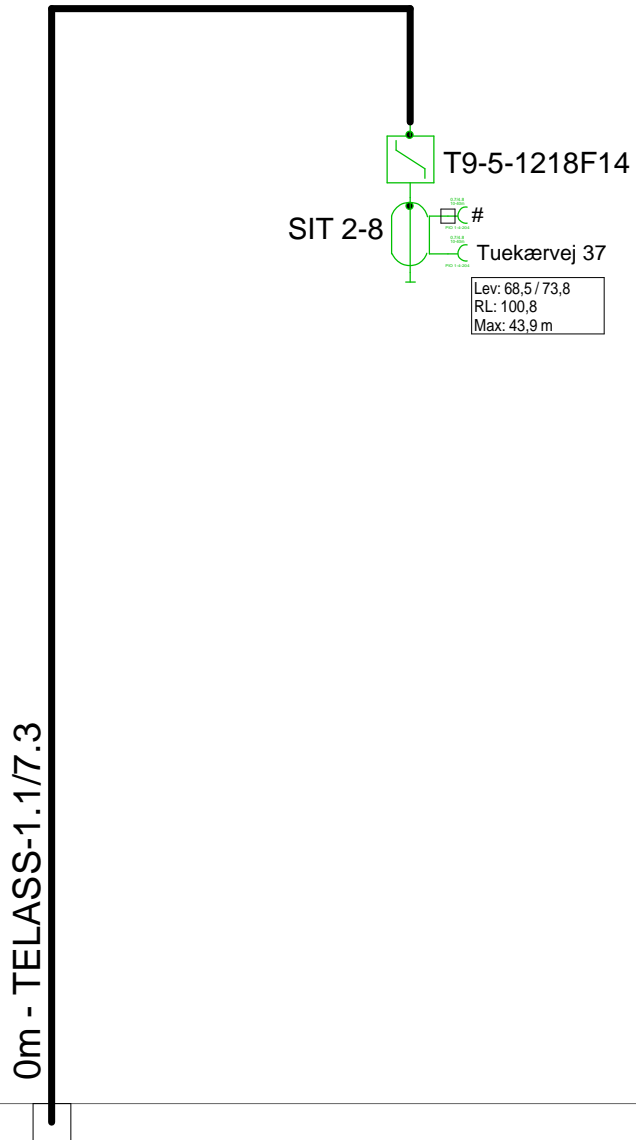
Antenna Installation/Network

Operator

Version	Edited by Ejvind Hansen	Date 11-09-2018
---------	-----------------------------------	---------------------------

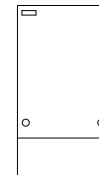
Size	Project 5011406_025D3	Sheet Id:12/No:12, 12/13
------	---------------------------------	-----------------------------

AND Version 4.12, Serial No. 14000-1-LP for: Dansk Kabel TV Tegholmegade 1 DK - 0900 København C	Sheet name KSAØ 3015
---	--------------------------------



12 - Tuekærvej 31

F.TV.2 grøn



Antenna Installation/Network		Minimum Frequency	Maximum Frequency
		267 MHz	1226 MHz
Operator			
Version	Edited by Ejvind Hansen		Date 11-09-2018
Size	Project 5011406_025D3		Sheet Id:13/No:13, 13/13
AND Version 4.12, Serial No. 14000-1-LP for: Dansk Kabel TV Teglgolmsgade 1 DK - 0900 København C			Sheet name F.TV.2 grøn