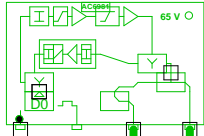




5011406_026D3 - 2 - Rennebæksvej 2

77463
5011406_026D3.02
AC 3010

285,00: 83,9
762,00: 86,6
985,00: 87,7
1140,00: 88,5
CNR: 450,00: 50,5 dB
RL: 84,9



285,00: 99,9
762,00: 102,7
985,00: 103,9
1140,00: 104,6
CNR: 450,00: 50,2 dB
RL: 72,3

RP: 1,81 A, 45,6 V

AC6110

Ligner 4.9/19.4 ind

RP: 0,38 A, 45,6 V

RP: 0,73 A, 45,6 V

0m - CT 33 S

0m - CT 33 S

6 - Rennebæksvej 3

5 - Rennebæksvej 4

2

1

Forstærkerliste 5011406_026D3-2

5011406_026D3.02 (77463) / AC 3010		
A1		
A2	99,7	105,0
TXS008	Input Equali	Equ: -8 dB
ALSC-mode AC(E)3xxx	AGC module	
AC3x10 D0-mode	Output mode	Equ: 7 dB
AC3010 204MHz Returvej		
AC3010-28dB-returin	Modem opt	RV: 28 dB
R02	P1	RPad: 2 dB
CXF204		
CXF204		
AC6124		
AC6981		
AC6120		

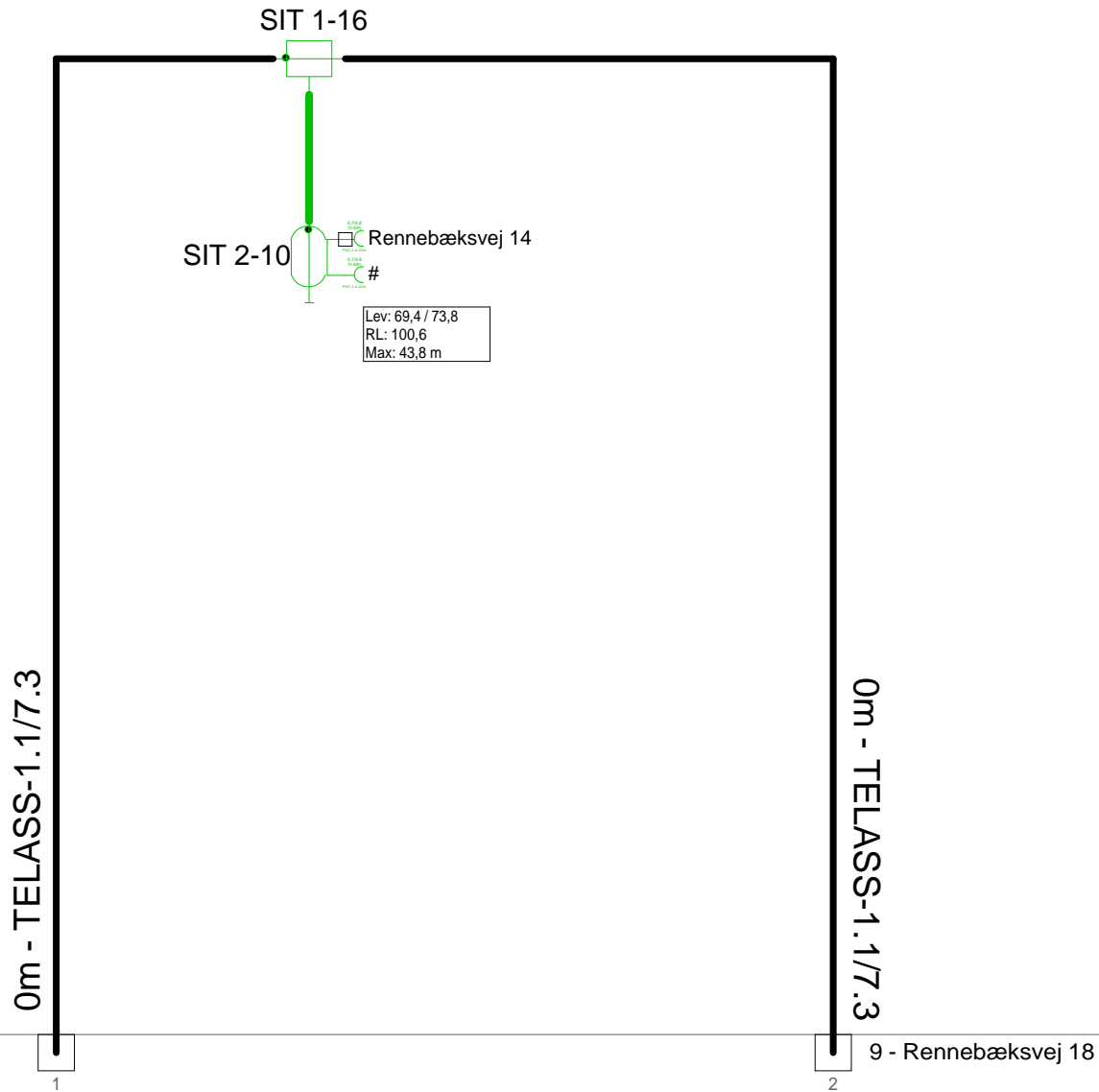
Antenna Installation/Network

Operator

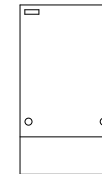
Version	Edited by	Date
	Ejvind Hansen	19-11-2018
Size	Project	Sheet
	5011406_026D3	Id:2/No:2, 2/13

AND Version 4.12, Serial No. 14000-1-LP for:

Sheet name



F.TV.2 grøn



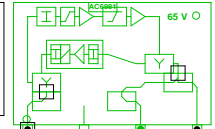
4 - Rennebæksvej 12

Antenna Installation/Network		Minimum Frequency	Maximum Frequency
		267 MHz	1226 MHz
Operator			
Version	Edited by	Date	
	Ejvind Hansen	19-11-2018	
Size	Project	Sheet	
	5011406_026D3	Id:3/No:3, 3/13	
AND Version 4.12, Serial No. 14000-1-LP for:			Sheet name

5011406_026D3 - 4 - Rennebæksvej 12

77464
5011406_026D3.LE.03
AC 3010

285,00: 76,3
762,00: 75,4
985,00: 74,7
1140,00: 74,1
CNR: 450,00: 50,2 dB
RL: 95,0



285,00: 100,5
762,00: 106,4
985,00: 108,4
1140,00: 109,5
CNR: 450,00: 49,6 dB
RL: 70,3

RP: 0,73 A, 43,7 V

SIT 2-16
Rennebæksvej 10
Rennebæksvej 12

Lev: 67,9 / 77,5
RL: 102,6
Max: 53,7 m

0m - TELASS-1.1/7.3

0m - TELASS-1.1/7.3

8 - Rennebæksvej 6

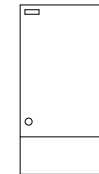
3 - Rennebæksvej 14

Forstærkerliste 5011406_026D3-4

5011406_026D3.LE.03 (77464) / AC 3010

A1	100,2	110,0
ALSC-mode AC(E)3xxx	AGC module	
AC3x10 D3-mode	Output mode	Equ: 13 dB
AC3010 204MHz Returvej		
AC3010-28dB-returin	Modem opt	RV: 28 dB
R00	P1	RPad: 0 dB
AC6110		
CXF204		
CXF204		
AC6115		
AC6981		
AC6120		

KSAØ 301509



Antenna Installation/Network

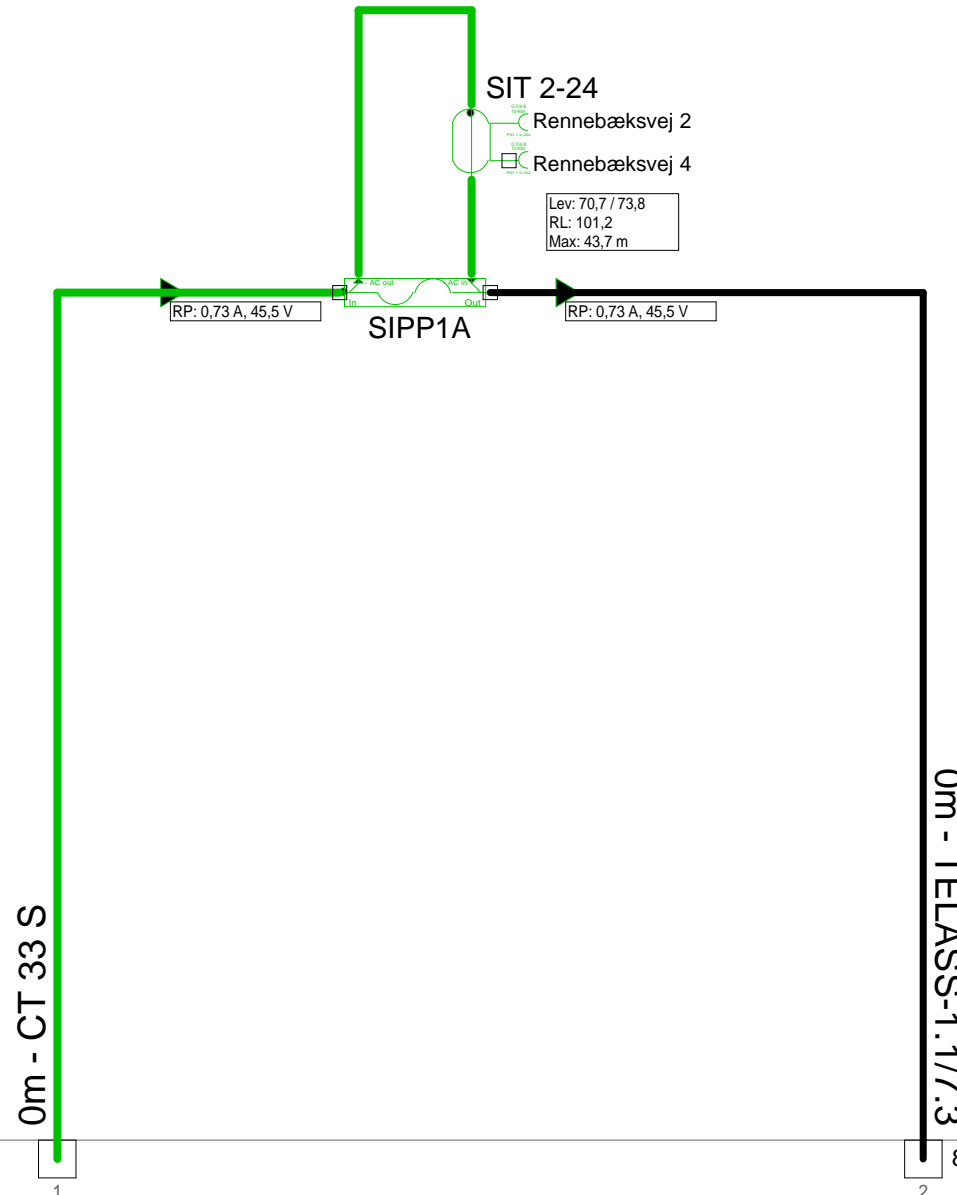
Operator

Version	Edited by Ejvind Hansen	Date 19-11-2018
Size	Project 5011406_026D3	Sheet Id:4/No:4, 4/13

AND Version 4.12, Serial No. 14000-1-LP for:

Sheet name

5011406_026D3 - 5 - Rennebæksvej 4



2 - Rennebæksvej 2

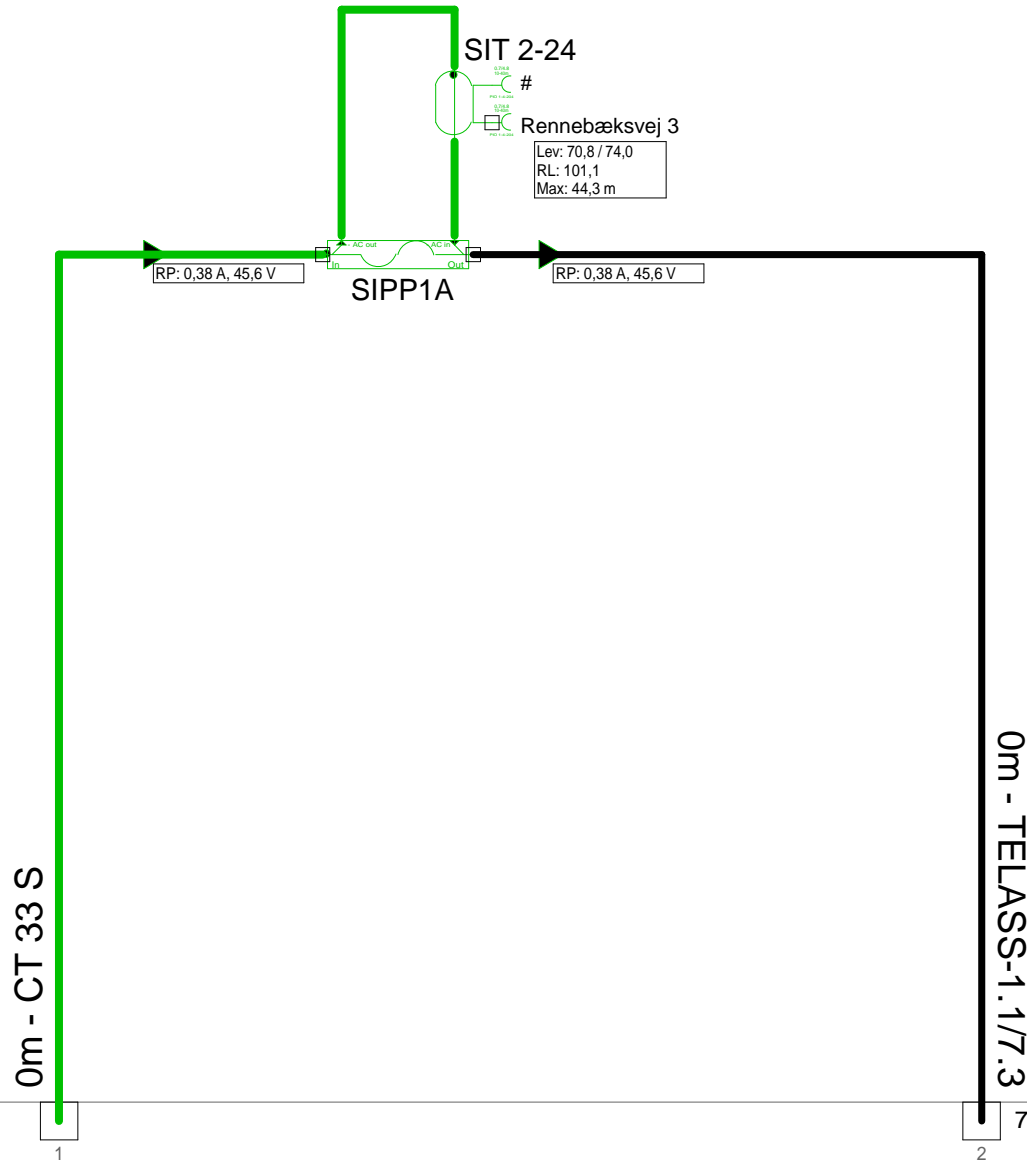
8 - Rennebæksvej 6

KSAØ 301204



Antenna Installation/Network		Minimum Frequency	Maximum Frequency
		267 MHz	1226 MHz
Operator			
Version	Edited by Ejvind Hansen		Date 19-11-2018
Size	Project 5011406_026D3		Sheet Id:5/No:5, 5/13
AND Version 4.12, Serial No. 14000-1-LP for:			Sheet name

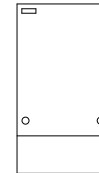
5011406_026D3 - 6 - Rennebæksvej 3



2 - Rennebæksvej 2

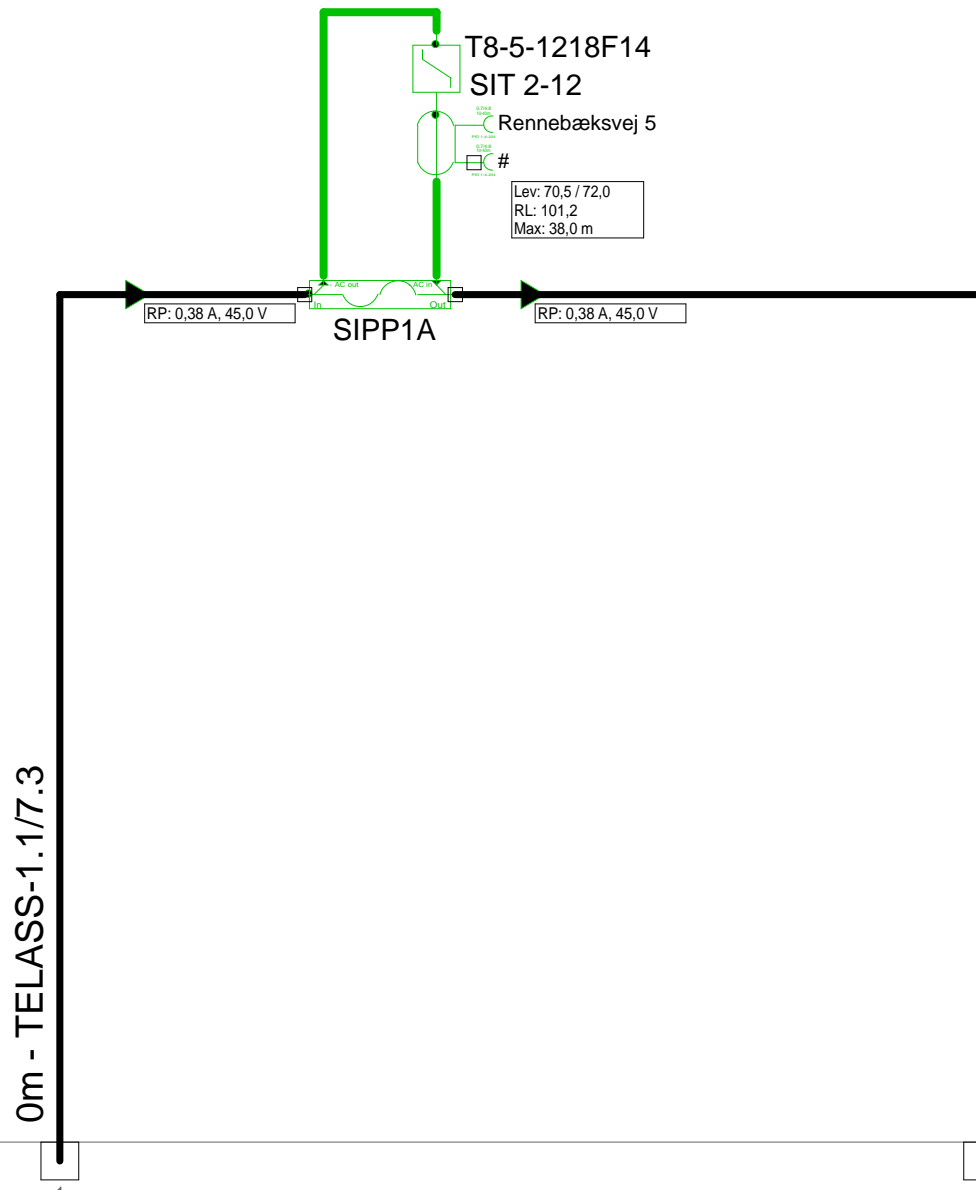
7 - Rennebæksvej 5

KSAØ 301204

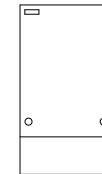


Antenna Installation/Network		Minimum Frequency	Maximum Frequency
		267 MHz	1226 MHz
Operator			
Version	Edited by	Date	
	Ejvind Hansen	19-11-2018	
Size	Project	Sheet	
	5011406_026D3	Id:6/No:6, 6/13	
AND Version 4.12, Serial No. 14000-1-LP for:			Sheet name

5011406_026D3 - 7 - Rennebæksvej 7



F.TV.2 grøn

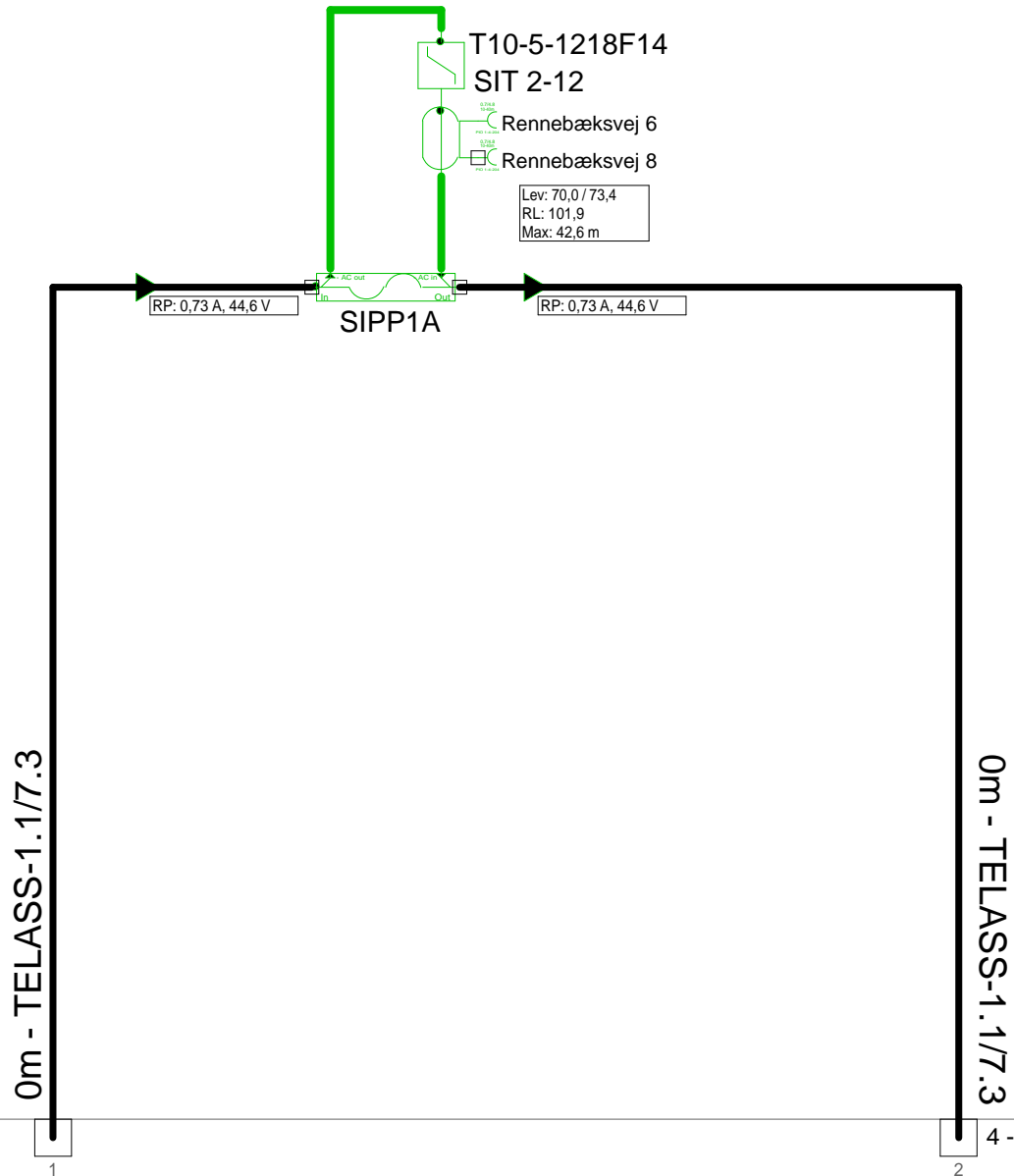


6 - Rennebæksvej 3

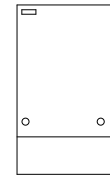
11 - Rennebæksvej 11

Antenna Installation/Network		Minimum Frequency	Maximum Frequency
		267 MHz	1226 MHz
Operator			
Version	Edited by Ejvind Hansen		Date 19-11-2018
Size	Project 5011406_026D3		Sheet Id:7/No:7, 7/13
AND Version 4.12, Serial No. 14000-1-LP for:			Sheet name

5011406_026D3 - 8 - Rennebæksvej 6



KSAØ 301204



5 - Rennebæksvej 4

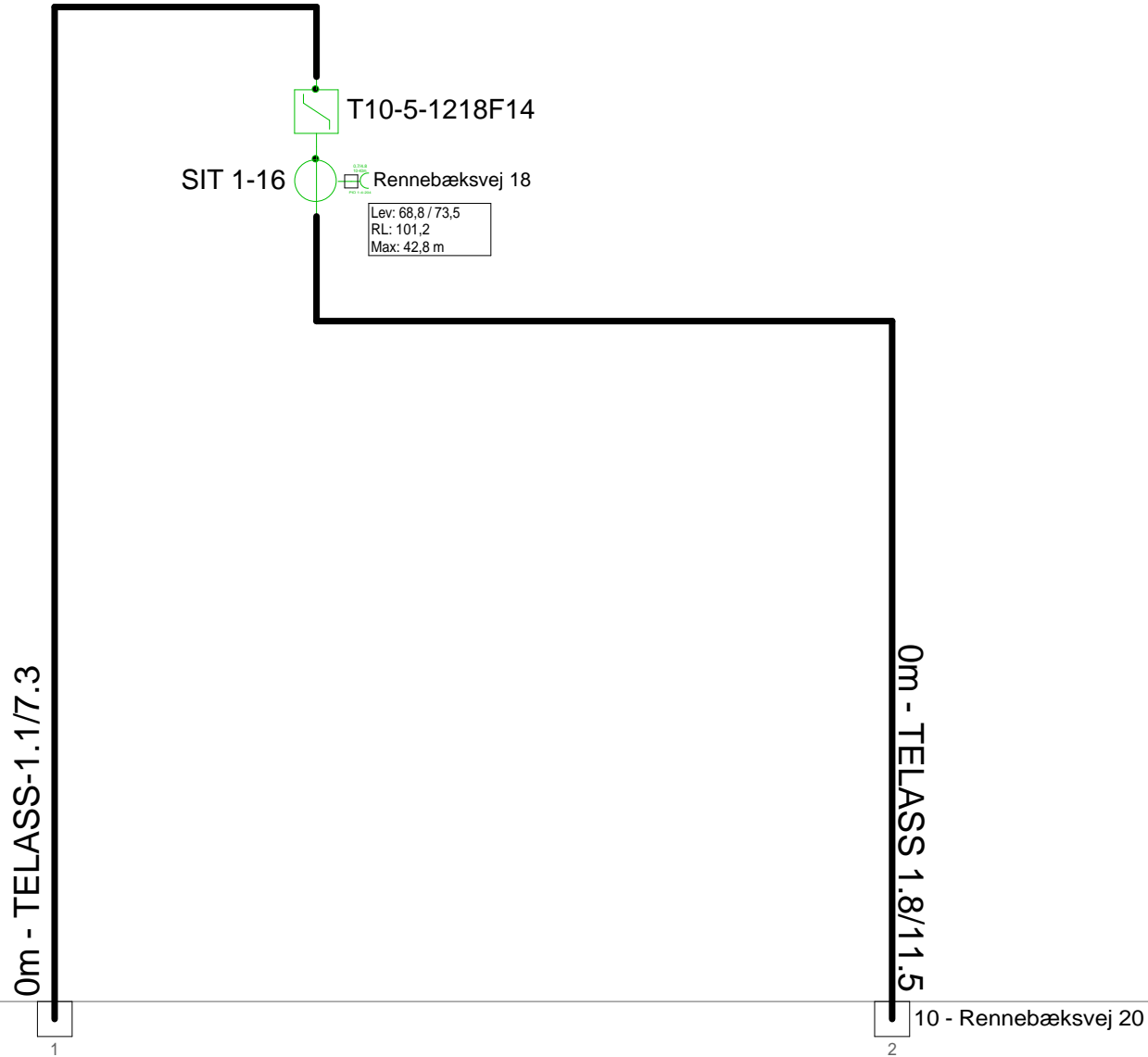
4 - Rennebæksvej 12

Antenna Installation/Network	Minimum Frequency 267 MHz	Maximum Frequency 1226 MHz
------------------------------	-------------------------------------	--------------------------------------

Operator

Version	Edited by Ejvind Hansen	Date 19-11-2018
Size	Project 5011406_026D3	Sheet Id:8/No:8, 8/13
AND Version 4.12, Serial No. 14000-1-LP for:		Sheet name

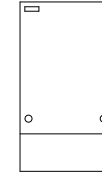
5011406_026D3 - 9 - Rennebæksvej 18



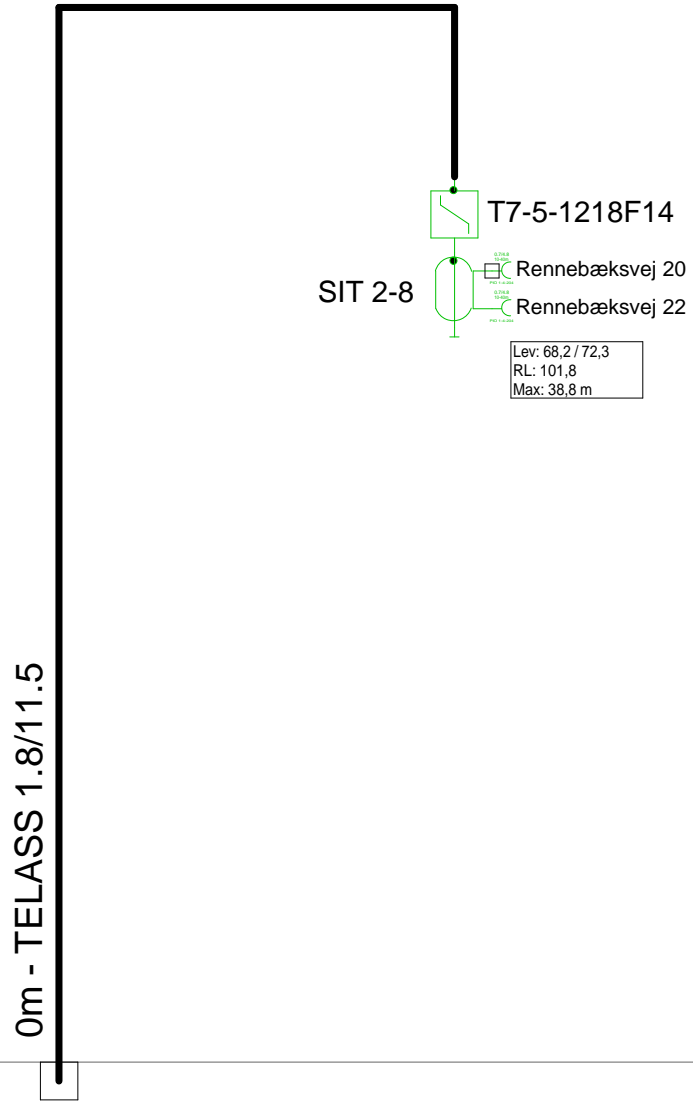
3 - Rennebæksvej 14

10 - Rennebæksvej 20

F.TV.2 grøn

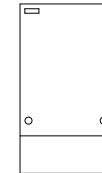


Antenna Installation/Network		Minimum Frequency	Maximum Frequency
		267 MHz	1226 MHz
Operator			
Version	Edited by Ejvind Hansen		Date 19-11-2018
Size	Project 5011406_026D3		Sheet Id:9/No:9, 9/13
AND Version 4.12, Serial No. 14000-1-LP for:			Sheet name



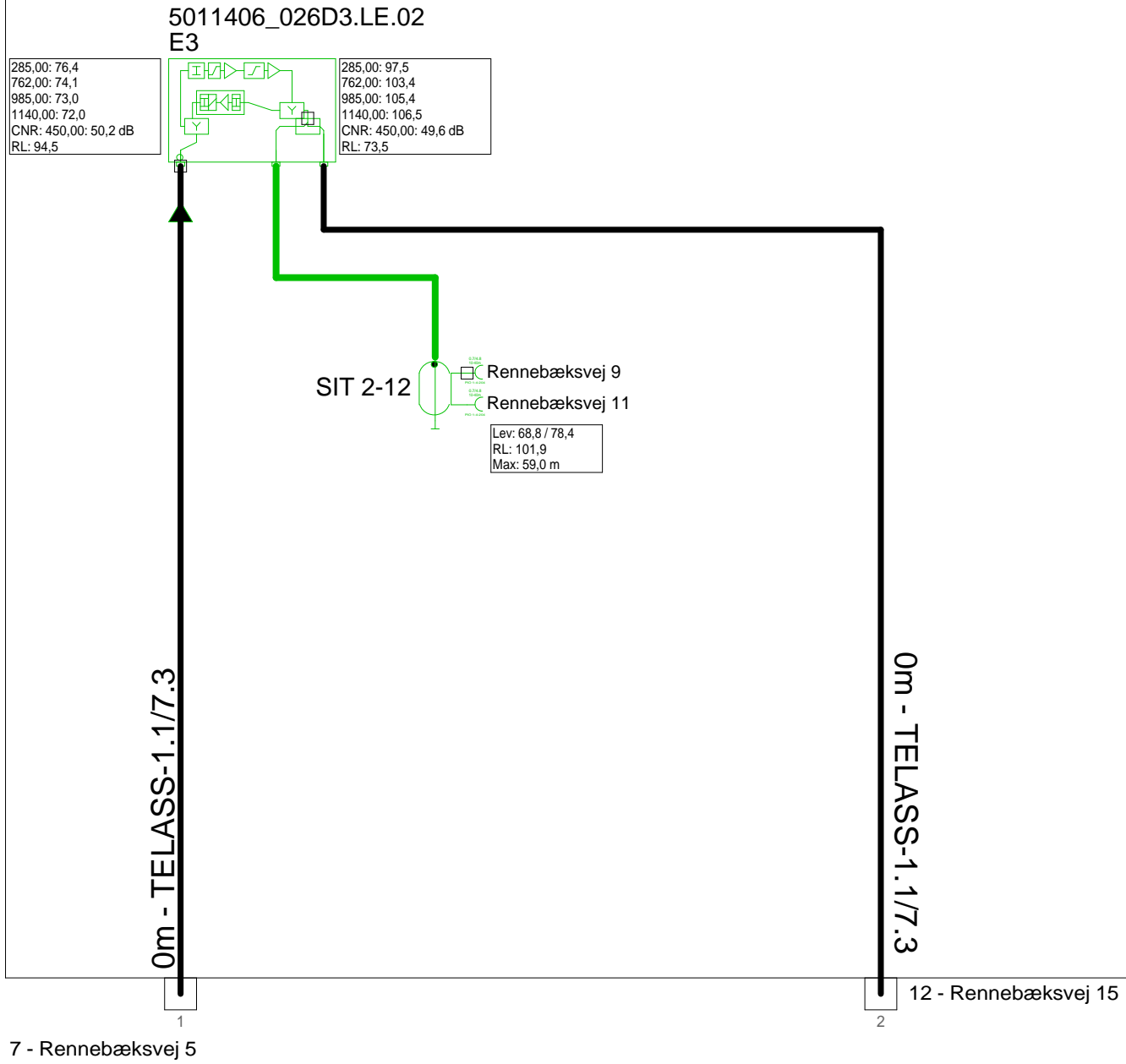
9 - Rennebæksvej 18

F.TV.2 grøn



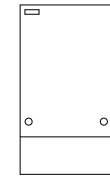
Antenna Installation/Network		Minimum Frequency 267 MHz	Maximum Frequency 1226 MHz
Operator			
Version	Edited by Ejvind Hansen		Date 19-11-2018
Size	Project 5011406_026D3		Sheet Id:10/No:10, 10/13
AND Version 4.12, Serial No. 14000-1-LP for:			Sheet name

5011406_026D3 - 11 - Rennebæksvej 11



Forstærkerliste 5011406_026D3-11		
5011406_026D3.LE.02 / E3		
A1	97,2	107,0
E3 Flat Input	Cable Simul	Equ: -0 dB
E3 Low Gain	Gain	Pad: 6 dB
E3 Equalizer	Equalizer	Equ: 13 dB
E3 return amplifier		
E3-23dB-returin	Modem opt	RV: 23 dB
CXF204		
CXF204 UA8 (RPad: 2dB)		
AC6115		

KSAØ 301509

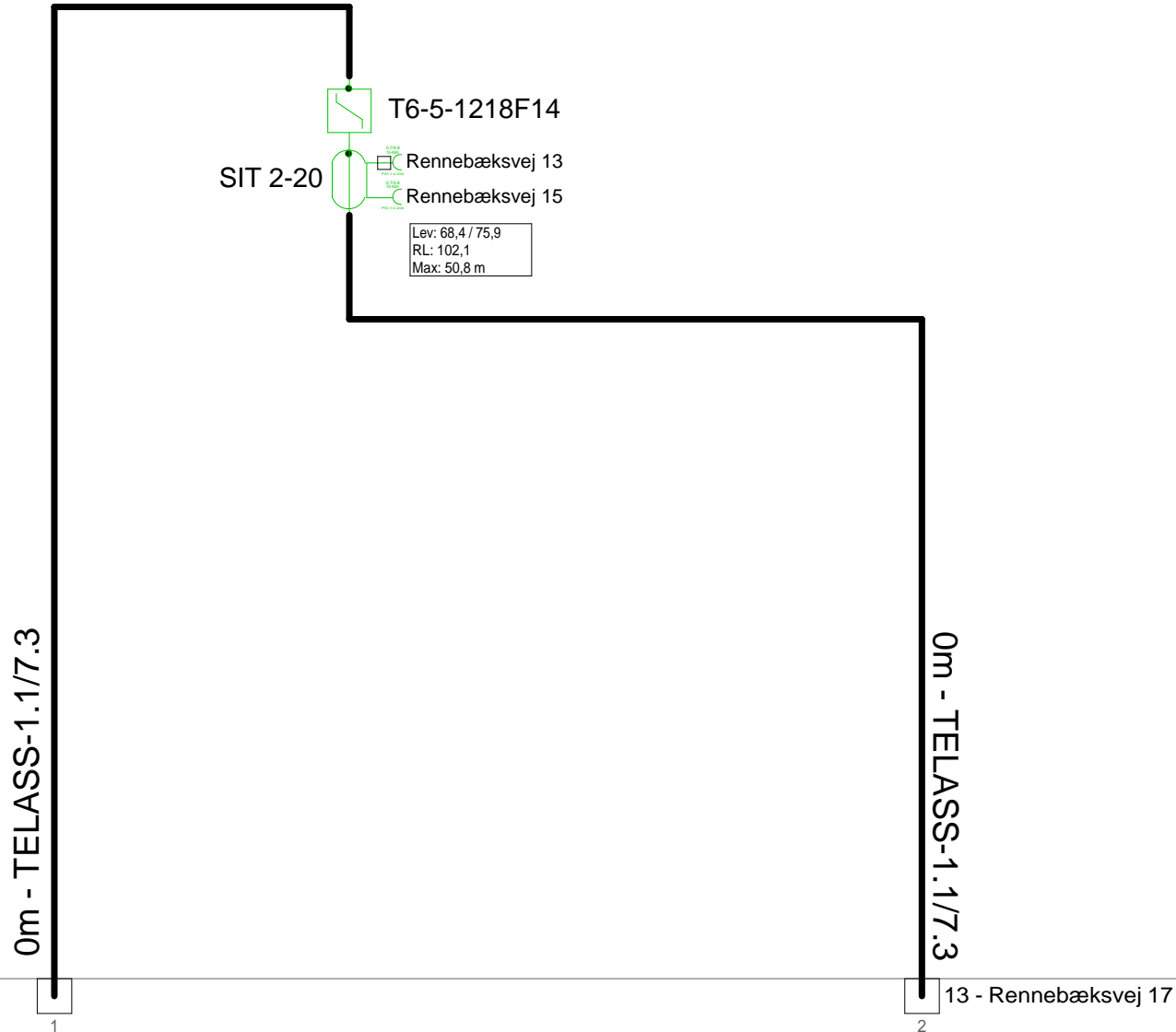


Antenna Installation/Network

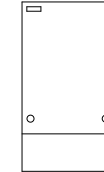
Operator

Version	Edited by Ejvind Hansen	Date 19-11-2018
Size	Project 5011406_026D3	Sheet Id:11/No:11, 11/13

5011406_026D3 - 12 - Rennebæksvej 15

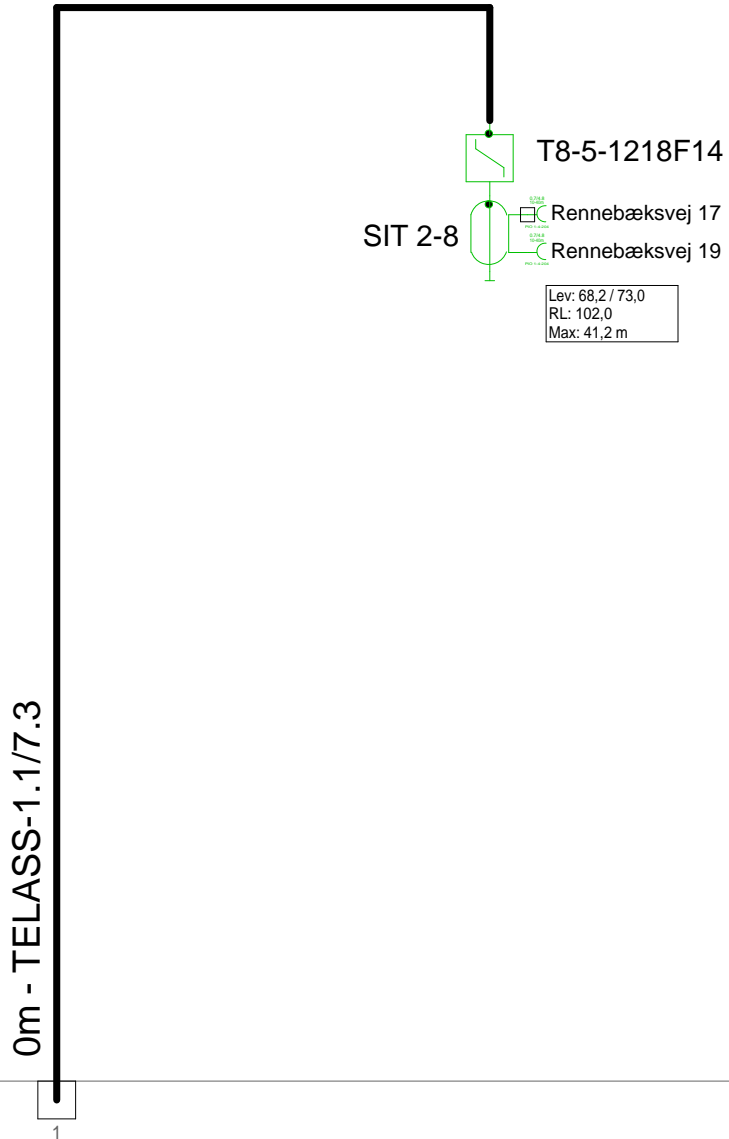


F.TV.2 grøn



11 - Rennebæksvej 11

Antenna Installation/Network		Minimum Frequency	Maximum Frequency
		267 MHz	1226 MHz
Operator			
Version	Edited by Ejvind Hansen		Date 19-11-2018
Size	Project 5011406_026D3		Sheet Id:12/No:12, 12/13
AND Version 4.12, Serial No. 14000-1-LP for:			Sheet name



12 - Rennebæksvej 15

F.TV.2 grøn



Antenna Installation/Network	Minimum Frequency 267 MHz	Maximum Frequency 1226 MHz
Operator		
Version	Edited by Ejvind Hansen	Date 19-11-2018
Size	Project 5011406_026D3	Sheet Id:13/No:13, 13/13
AND Version 4.12, Serial No. 14000-1-LP for:		Sheet name