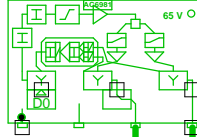


5011406_028D3 - 2 - Dunmosevej 12

77467
5011406_028D3.03
AC 3210

285,00: 80,3
762,00: 81,3
985,00: 81,3
1140,00: 80,9
1200,00: 80,8
CNR: 1218,00: 50,1 dB
RL: 88,6



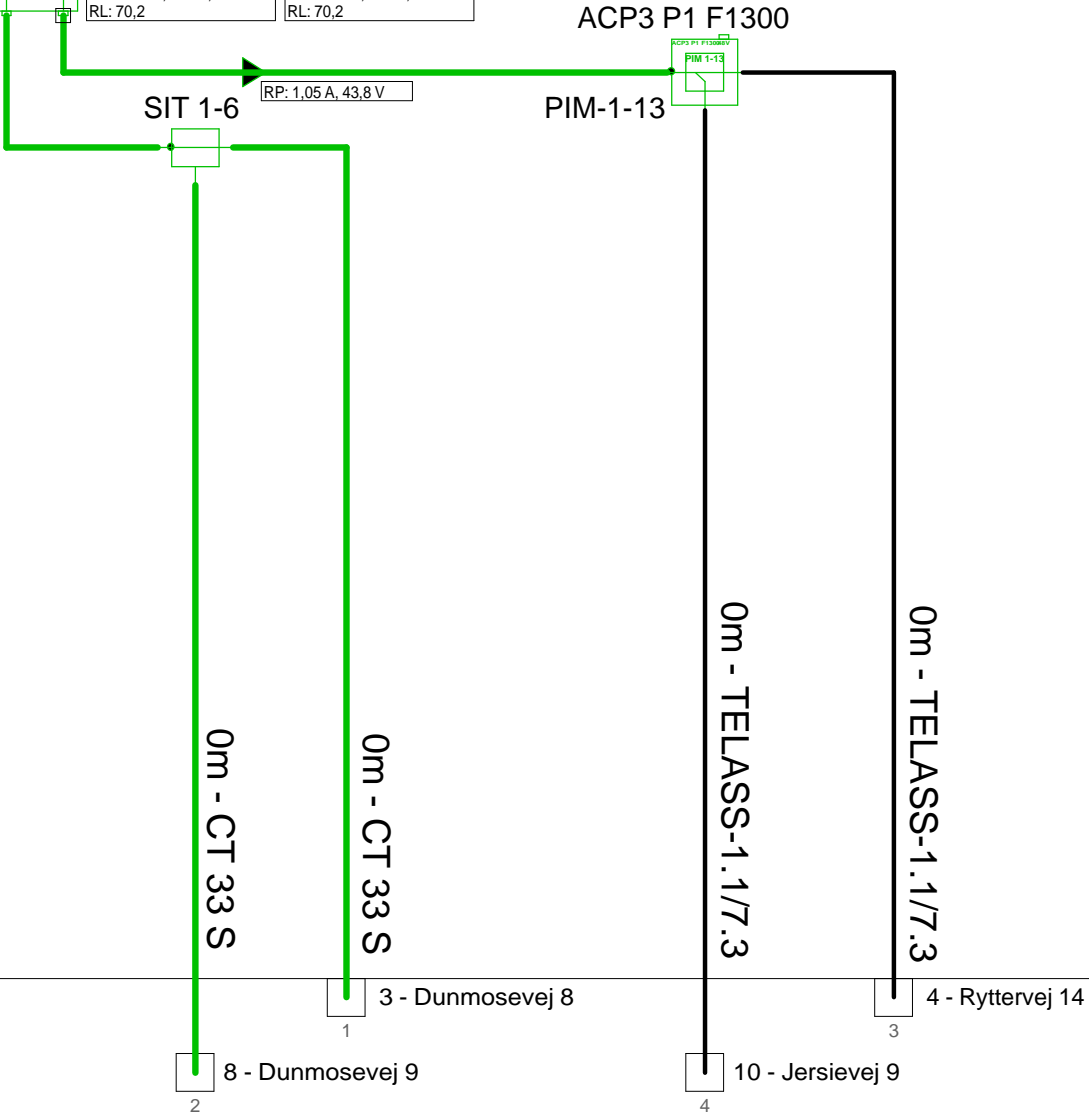
285,00: 100,5
762,00: 106,7
985,00: 108,6
1140,00: 109,5
1200,00: 109,9
CNR: 1218,00: 49,6 dB
RL: 70,2

285,00: 99,9
762,00: 103,5
985,00: 104,5
1140,00: 104,8
1200,00: 105,0
CNR: 1218,00: 49,6 dB
RL: 70,2

RP: 2,03 A, 43,8 V

AC6110

Telass-1.1/7.3 ind

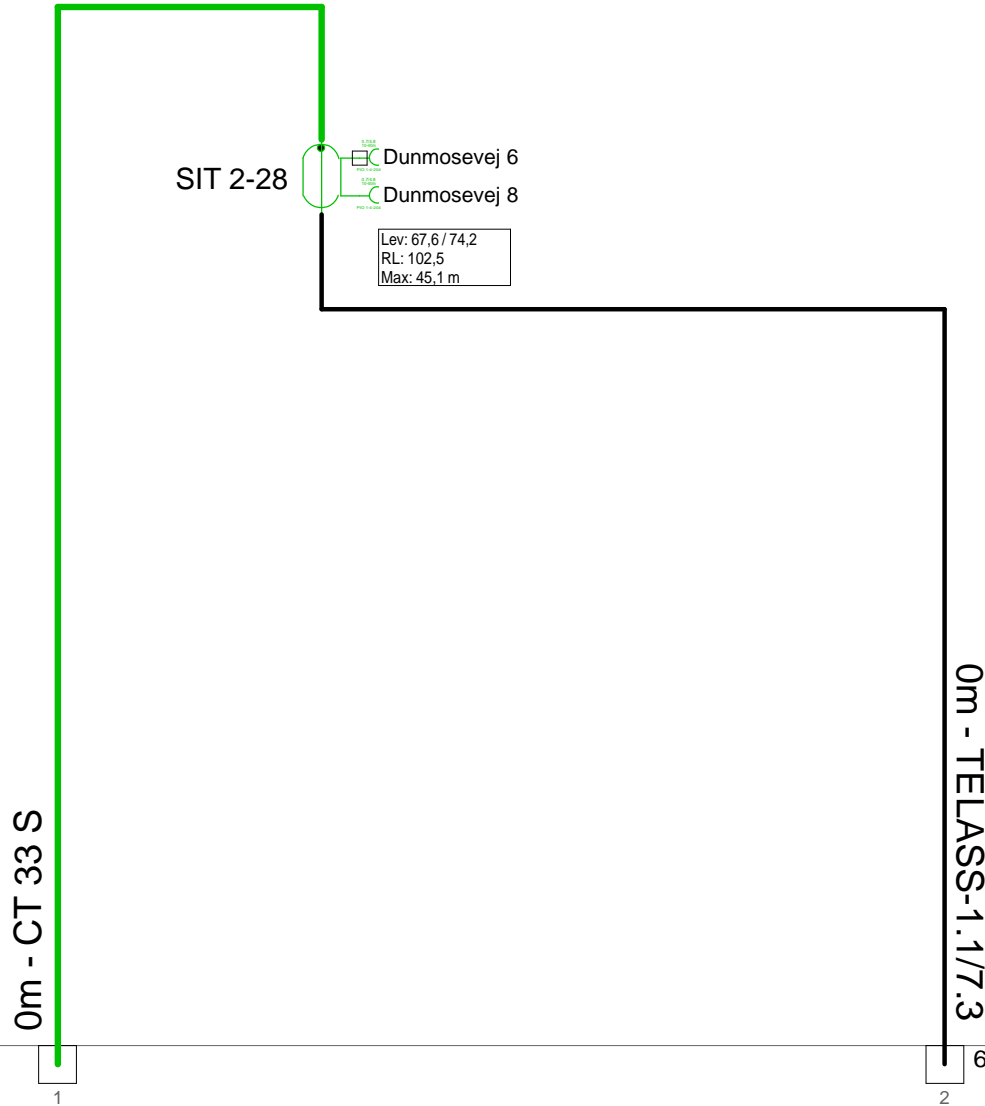


- 8 - Dunmosevej 9
- 3 - Dunmosevej 8
- 10 - Jersievej 9
- 4 - Ryttervej 14

Forstærkerliste 5011406_028D3-2		
5011406_028D3.03 (77467) / AC 3210		
A1	100,2	110,0
A2	99,7	105,0
TXS004	Input Equali	Equ: -4 dB
ALSC-mode AC3210	AGC module	
AC3x10 D0-mode	Output mode	Equ: 7 dB
AC3210 Returvej		
AC 3210ret.indgang	Out2 Optimi	RV: 0 dB
R0dB	Modem Opt	RPad: 0 dB
AC 3210ret.indgang	Out1 Optimi	RV: 0 dB
R0dB	Modem Opt	RPad: 0 dB
CXF204		
CXF204, 2x		
AC6120		
AC6981		

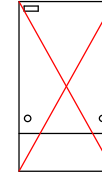
Antenna Installation/Network		
Operator		
Version	Edited by Ejvind Hansen	Date 20-11-2018
Size	Project 5011406_028D3	Sheet Id:2/No:2, 2/12
AND Version 4.12, Serial No. 14000-1-LP for: Dansk Kabel TV Tegholmsgade 1 DK - 0900 København C		Sheet name 5011406_028D

5011406_028D3 - 3 - Dunmosevej 8

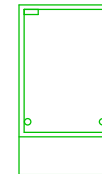


Lev: 67,6 / 74,2
 RL: 102,5
 Max: 45,1 m

F.TV.2 grøn



KSAØ 301204
 KS3012VSP-AL



Antenna Installation/Network		Minimum Frequency	Maximum Frequency
		267 MHz	1226 MHz
Operator			
Version	Edited by Ejvind Hansen		Date 20-11-2018
Size	Project 5011406_028D3		Sheet Id:3/No:3, 3/12
AND Version 4.12, Serial No. 14000-1-LP for: Dansk Kabel TV Tegholmegade 1 DK - 0900 København C			Sheet name F.TV.2 grøn/udtak, tilKSAØ 301204

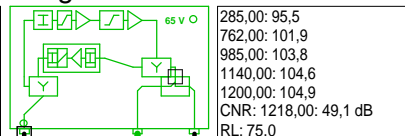
2 - Dunmosevej 8

6 - Dunmosevej 4

5011406_028D3 - 4 - Ryttervej 14

5011406_028D3.LE.01 Hargon 351

285,00: 82,6
762,00: 76,0
985,00: 72,9
1140,00: 70,4
1200,00: 69,5
CNR: 1218,00: 49,6 dB
RL: 85,0



285,00: 95,5
762,00: 101,9
985,00: 103,8
1140,00: 104,6
1200,00: 104,9
CNR: 1218,00: 49,1 dB
RL: 75,0

RP: 0,28 A, 42,3 V

SIT 2-12



Lev: 67,8 / 77,5
RL: 102,4
Max: 52,8 m

0m - TELASS-1.1/7.3

0m - TELASS-1.1/7.3

2 - Dunmosevej 8

1

7 - Ryttervej 19

2

Forstærkerliste 5011406_028D3-4

5011406_028D3.LE.01 / Hargon 351		
A1	95,3	105,0
EQ18dB 1218MHz	Input equ/att	Equ: 18 dB
AT0dB	Attenuator	Pad: 0 dB
EQ0dB 1218MHz	Equalizer	Equ: 0 dB
AT4dB	Interstage at	Pad: 4 dB
EQ13dB 1218MHz	Interstage e	Equ: 13 dB
Vector returvej		
Vector returvej 204MHz	Modem opt	RV: 26 dB
AT5dB	Attenuator	RPad: 5 dB
Vector returvejs udg.reg	Upstream r	RV: 0 dB
AT11dB	Attenuator	RPad: 11 dB
EQ 11dB 204MHz	Equalizer	REqu: 11 dB
Filter ind 204MHz retur		
Filter ud 204MHz retur		
TO15T		

KSAØ 301509



Antenna Installation/Network

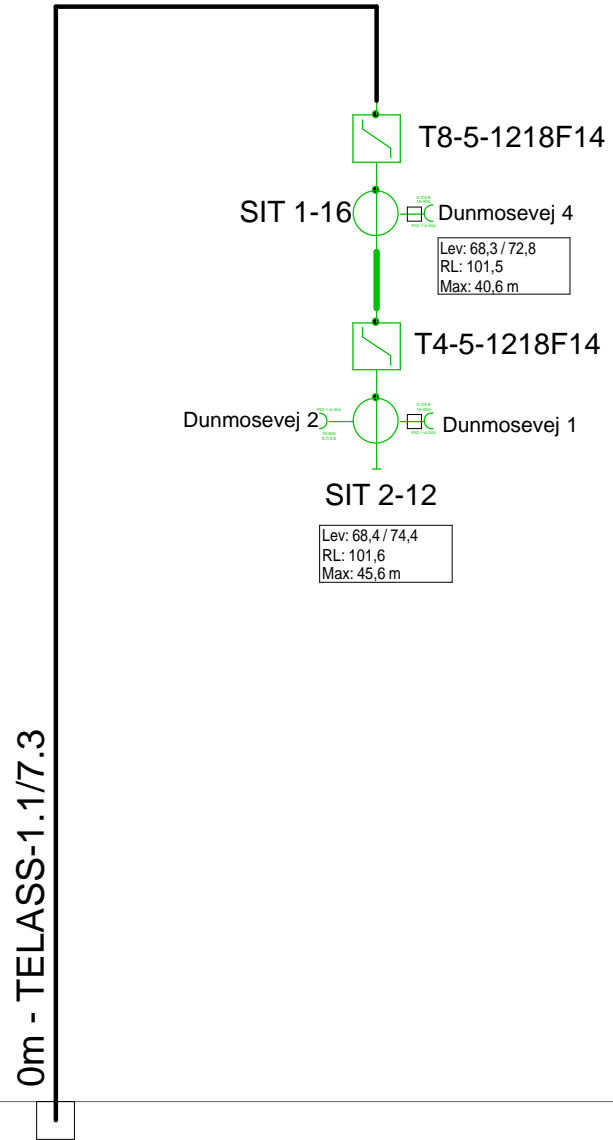
Operator

Version	Edited by Ejvind Hansen	Date 20-11-2018
---------	-----------------------------------	---------------------------

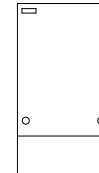
Size	Project 5011406_028D3	Sheet Id:4/No:4, 4/12
------	---------------------------------	--------------------------

AND Version 4.12, Serial No. 14000-1-LP for: Dansk Kabel TV Tegholmegade 1 DK - 0900 København C	Sheet name KSAØ 301509/5011406_028D3
--	---

5011406_028D3 - 6 - Dunmosevej 4

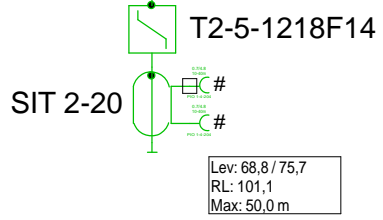


F.TV.2 grøn



Antenna Installation/Network		Minimum Frequency	Maximum Frequency
		267 MHz	1226 MHz
Operator			
Version	Edited by Ejvind Hansen		Date 20-11-2018
Size	Project 5011406_028D3		Sheet Id:6/No:6, 5/12
AND Version 4.12, Serial No. 14000-1-LP for: Dansk Kabel TV Tegholmegade 1 DK - 0900 København C			Sheet name F.TV.2 grøn

0m - TELASS-1.1/7.3



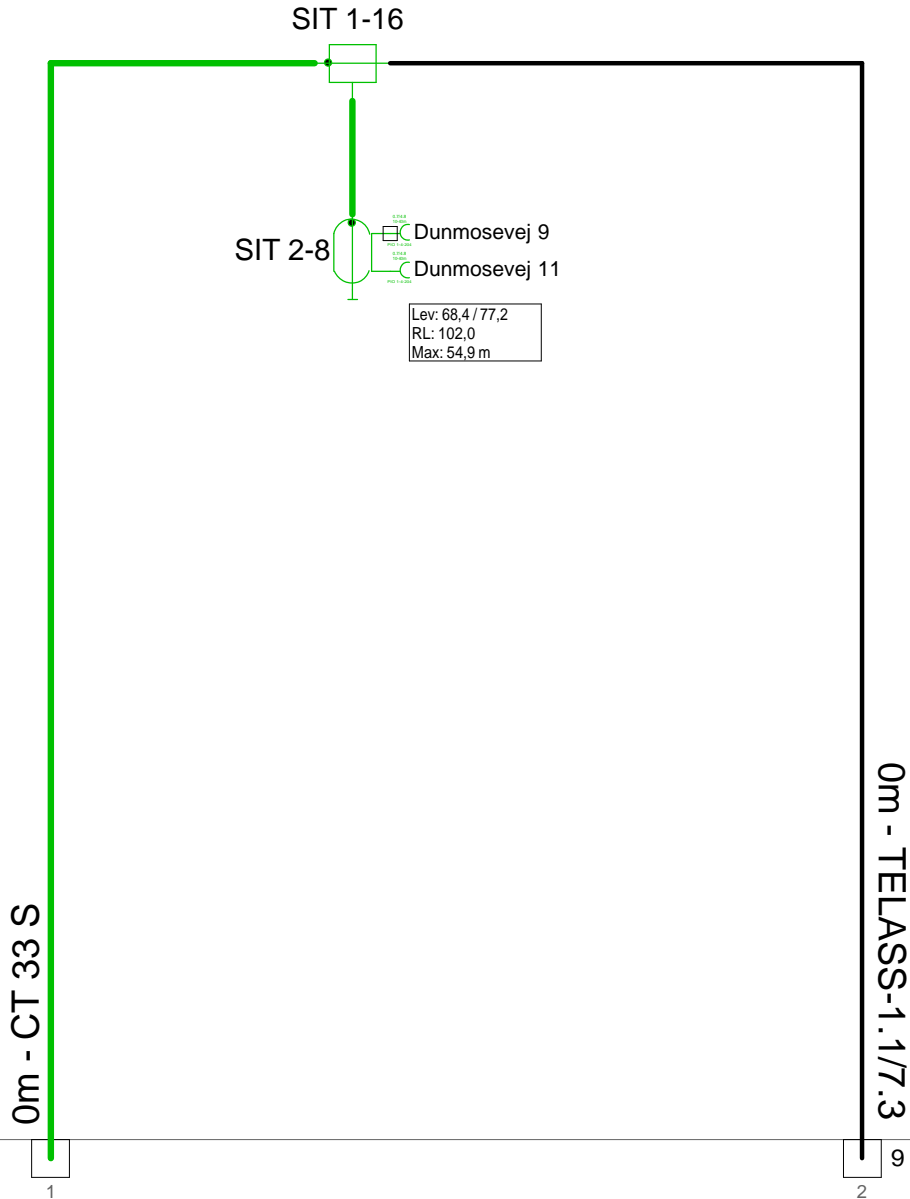
4 - Ryttervej 15

F.TV.2 grøn



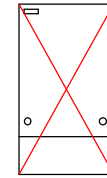
Antenna Installation/Network		Minimum Frequency	Maximum Frequency
		267 MHz	1226 MHz
Operator			
Version	Edited by Ejvind Hansen		Date 20-11-2018
Size	Project 5011406_028D3		Sheet Id:7/No:7, 6/12
AND Version 4.12, Serial No. 14000-1-LP for: Dansk Kabel TV Tegholmegade 1 DK - 0900 København C			Sheet name F.TV.2 grøn

5011406_028D3 - 8 - Dunmosevej 9

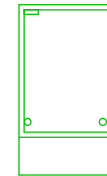


2 - Dunmosevej 8

F.TV.2 grøn

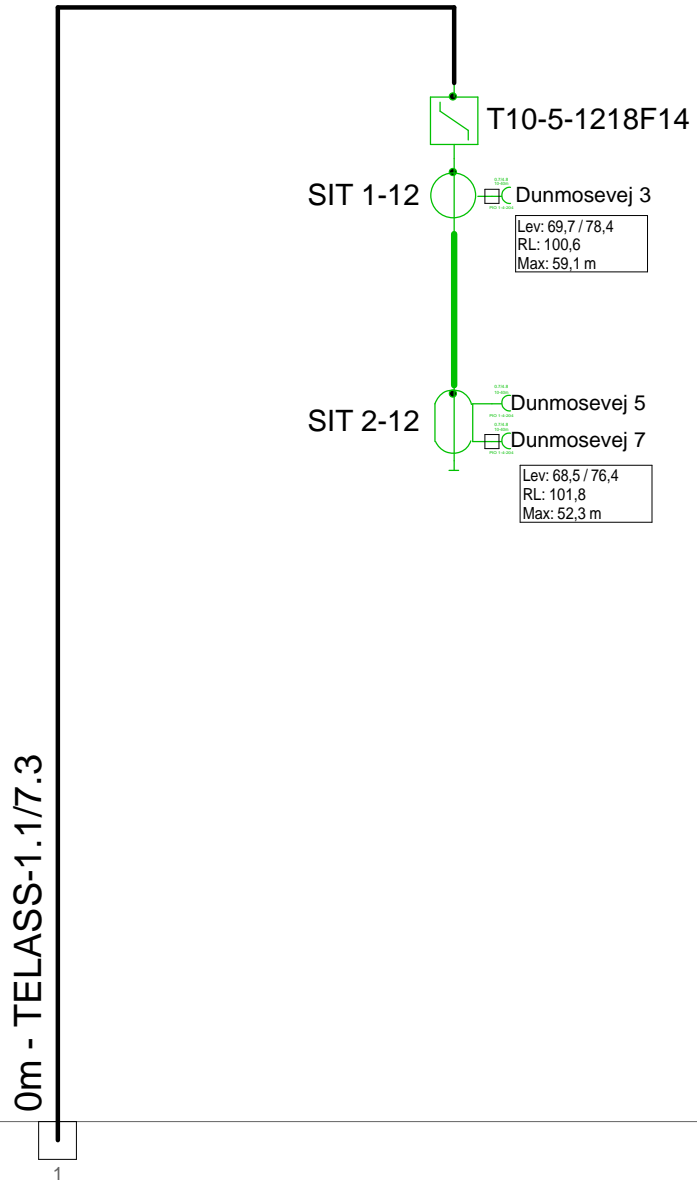


KSAØ 301204
KS3012V/SP-AL



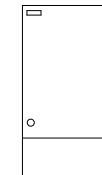
Antenna Installation/Network		Minimum Frequency	Maximum Frequency
		267 MHz	1226 MHz
Operator			
Version	Edited by Ejvind Hansen		Date 20-11-2018
Size	Project 5011406_028D3		Sheet Id:8/No:8, 7/12
AND Version 4.12, Serial No. 14000-1-LP for: Dansk Kabel TV Tegholmegade 1 DK - 0900 København C			Sheet name F.TV.2 grøn/udak, stvKSAØ 301204

5011406_028D3 - 9 - Dunmosevej 7



8 - Dunmosevej 9

F.TV.2 grøn

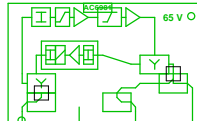


Antenna Installation/Network		Minimum Frequency	Maximum Frequency
		267 MHz	1226 MHz
Operator			
Version	Edited by Ejvind Hansen		Date 20-11-2018
Size	Project 5011406_028D3		Sheet Id:9/No:9, 8/12
AND Version 4.12, Serial No. 14000-1-LP for: Dansk Kabel TV Tegholmegade 1 DK - 0900 København C			Sheet name F.TV.2 grøn

5011406_028D3 - 10 - Jersievej 9

77468
5011406_028D3.LE.02
AC 3010

285,00: 77,4
762,00: 75,1
985,00: 73,7
1140,00: 72,3
CNR: 1218,00: 49,6 dB
RL: 91,2



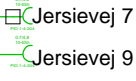
285,00: 100,5
762,00: 106,8
985,00: 108,7
1140,00: 109,6
CNR: 1218,00: 49,0 dB
RL: 71,2

RP: 0,77 A, 41,5 V

SIT 1-12

SIT 2-10

Lev: 68,8 / 78,5
RL: 102,6
Max: 59,3 m



0m - TELASS-1.1/7.3

0m - TELASS-1.1/7.3

0m - TELASS-1.1/7.3

2 - Dunmosevej 8 1

13 - Jersievej 3 3

11 - Jersievej 6 2

Forstærkerliste 5011406_028D3-10		
5011406_028D3.LE.02 (77468) / AC 3010		
A1	100,2	110,0
ALSC-mode AC(E)3xxx	AGC module	
AC3x10 D3-mode	Output mode	Equ: 13 dB
AC3010 204MHz Returvej		
AC3010-28dB-returin	Modem opt	RV: 28 dB
R01	P1	RPad: 1 dB
AC6110		
CXF204		
CXF204		
AC6113		
AC6981		
AC6120		

KSAØ 301509



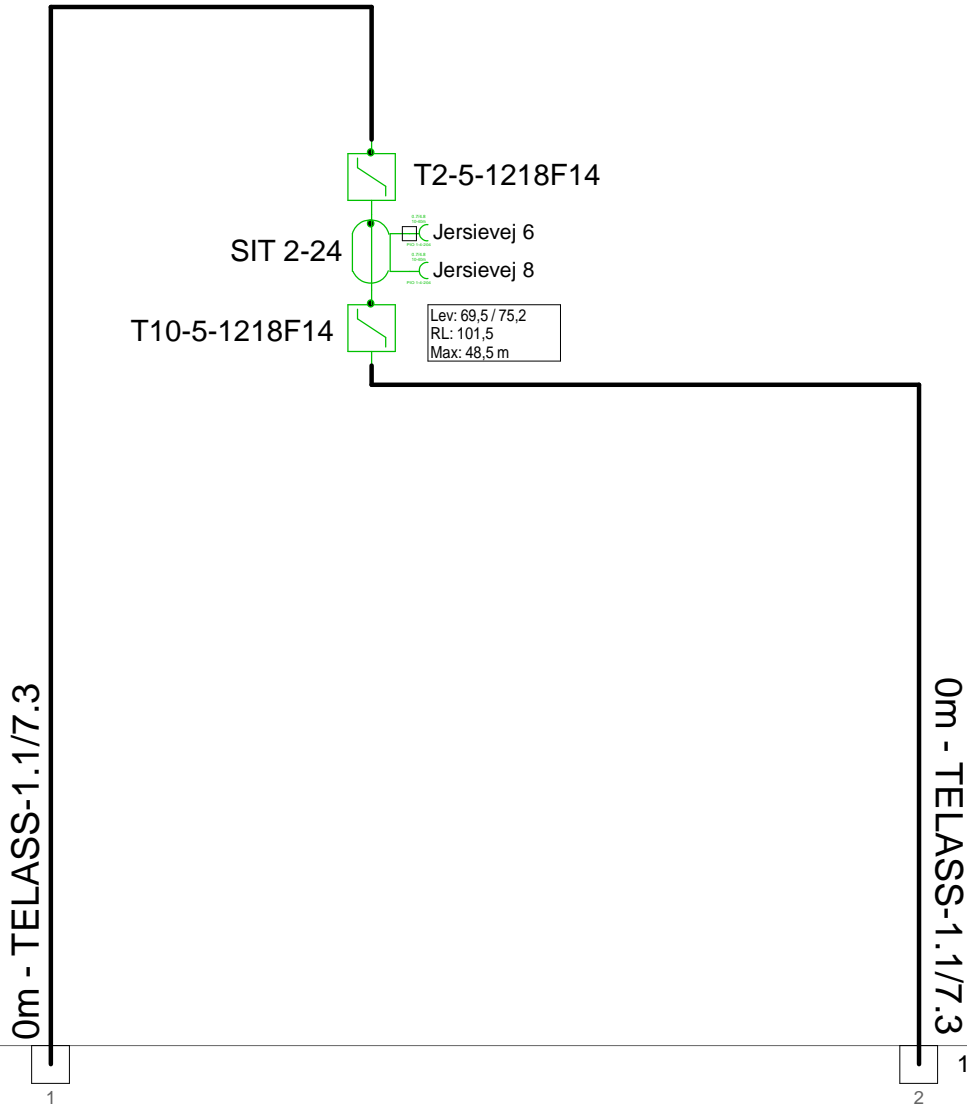
Antenna Installation/Network

Operator

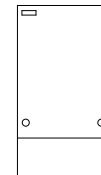
Version	Edited by Ejvind Hansen	Date 20-11-2018
---------	-----------------------------------	---------------------------

Size	Project 5011406_028D3	Sheet Id:10/No:10, 9/12
------	---------------------------------	----------------------------

AND Version 4.12, Serial No. 14000-1-LP for: Dansk Kabel TV Tegholmegade 1 DK - 0900 København C	Sheet name KSAØ 301509/5011406_028D3
--	---



F.TV.2 grøn

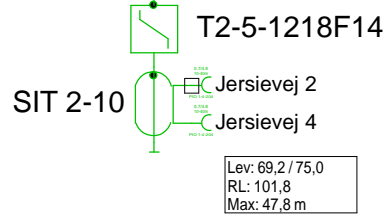


10 - Jersievej 9

12 - Jersievej 4

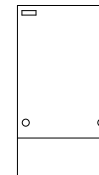
Antenna Installation/Network		Minimum Frequency	Maximum Frequency
		267 MHz	1226 MHz
Operator			
Version	Edited by Ejvind Hansen		Date 20-11-2018
Size	Project 5011406_028D3		Sheet Id:11/No:11, 10/12
AND Version 4.12, Serial No. 14000-1-LP for: Dansk Kabel TV Tegholmegade 1 DK - 0900 København C			Sheet name F.TV.2 grøn

0m - TELASS-1.1/7.3



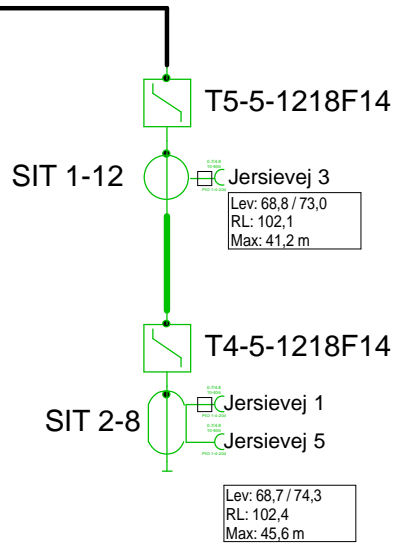
11 - Jersievej 6

F.TV.2 grøn

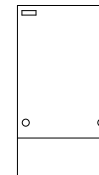


Antenna Installation/Network		Minimum Frequency	Maximum Frequency
		267 MHz	1226 MHz
Operator			
Version	Edited by Ejvind Hansen		Date 20-11-2018
Size	Project 5011406_028D3		Sheet Id:12/No:12, 11/12
AND Version 4.12, Serial No. 14000-1-LP for: Dansk Kabel TV Tegholmegade 1 DK - 0900 København C			Sheet name F.TV.2 grøn

0m - TELASS-1.1/7.3



F.TV.2 grøn



10 - Jersievej 9

Antenna Installation/Network		Minimum Frequency	Maximum Frequency
		267 MHz	1226 MHz
Operator			
Version	Edited by Ejvind Hansen		Date 20-11-2018
Size	Project 5011406_028D3		Sheet Id:13/No:13, 12/12
AND Version 4.12, Serial No. 14000-1-LP for: Dansk Kabel TV Teglhømsgade 1 DK - 0900 København C			Sheet name F.TV.2 grøn