

6

11 - KSAØ 301509
udsk. til
KSAØ 301509
5011406_025-1

70 - KSAØ 301509

122

3 - STV Ø

118

114 A

3 - KSAØ 304509
udsk. til
KSAØ 302709 GL
25011406_030D3-5

4 - STV Ø

123

121

61m - TELASS-1.1/7.3

119

33m - TELASS-1.1/7.3

76m - TELASS-1.1/7.3

41m - CT 33-S

196m - TELASS-3.6/23.8

1 A

14 - F.TV.2 grøn

5 - STV Ø
udsk. til
KSAØ 301509 GL
5011406_030D3-5

5 - EI-stander

115

4 - KSMØ 481210

4m - RØR 40MM 220V
8m - RØR 40MM 220V

11 - 30 SA 4-11 grøn
udsk. til
KSAØ 423612 GL
ny 230 Volt
360-100-001-03

111

109

SS-1.1/7.3

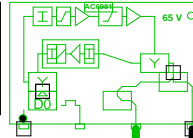
1 A

3

5011406_030D3 - 2 - Vestervej 114A

77436
5011406_030D3.02
AC 3010

285,00:	81,2
762,00:	82,6
985,00:	83,2
1140,00:	83,7
CNR: 450,00:	49,6 dB
RL:	88,1

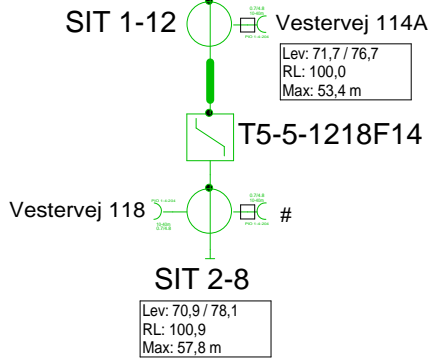


285,00:	99,8
762,00:	102,6
985,00:	103,7
1140,00:	104,6
CNR: 450,00:	49,1 dB
RL:	71,9

RP: 0,92 A, 47,8 V

AC6110

RP: 0,26 A, 47,8 V



0m - TELASS-1.1/7.3

3 - Vestervej 122

Forstærkerliste 5011406_030D3-2

5011406_030D3.02 / AC 3010

A1		
A2	99,7	105,0
TXS008	Input Equa	Equ: -8 dB
ALSC-mode AC(E)3x	AGC modu	
AC3x10 D0-mode	Output m	Equ: 7 dB
AC3010 204MHz Returvej		
AC3010-28dB-returin	Modem op	RV: 28 dB
R02	P1	RPad: 2 dB
CXF204		
CXF204		
AC6115		
AC6981		
AC6120		

Antenna Installation/Network	Minimum Frequency	Maximum Frequency
	267 MHz	1226 MHz

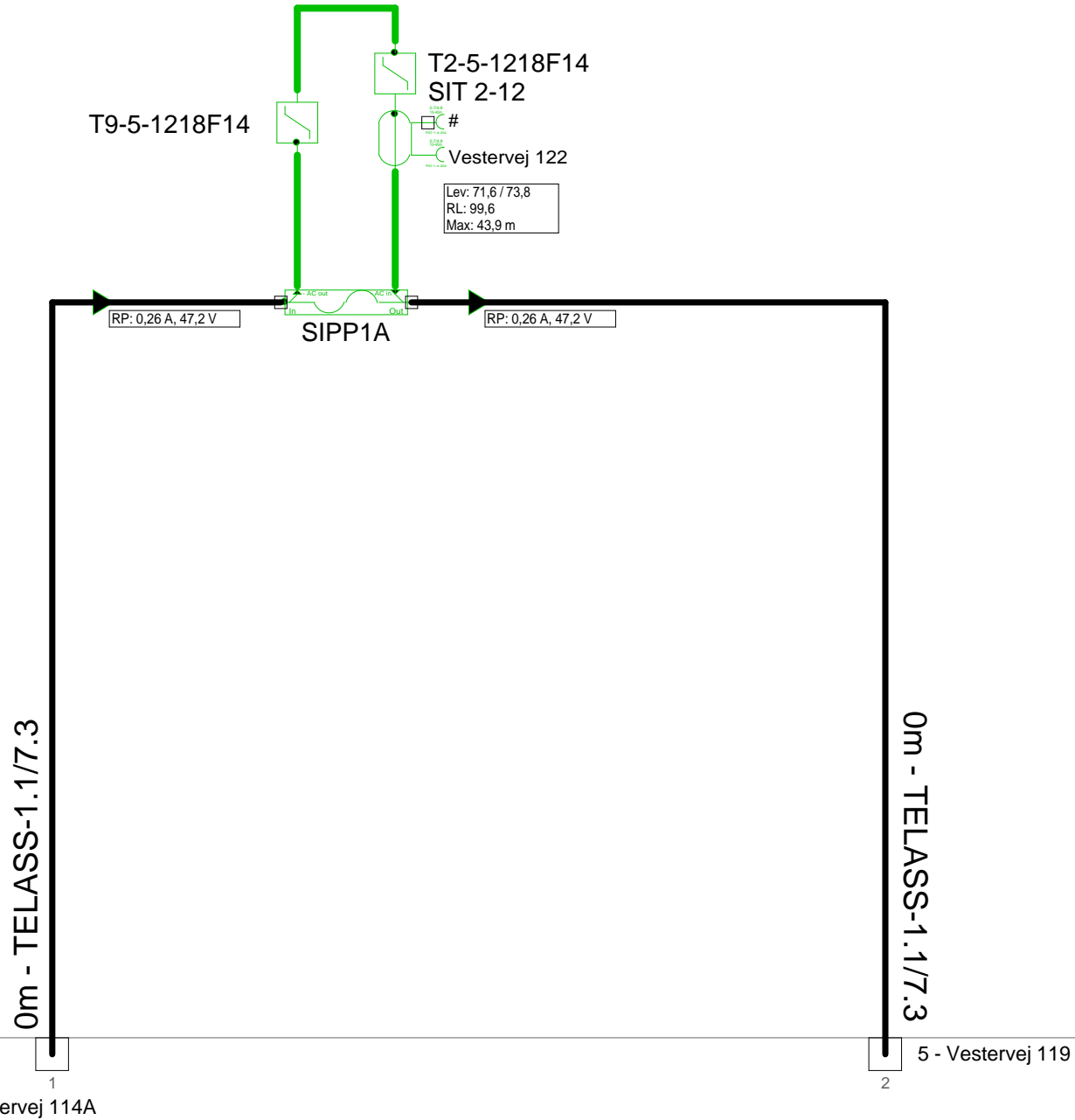
Operator

Version	Edited by	Date
	Ejvind Hansen	11-09-2018

Size	Project	Sheet
	5011406_030D3	Id:2/No:2, 2/5

AND Version 4.12, Serial No. 14000-1-LP for: Sheet name

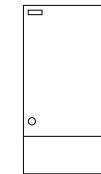
5011406_030D3 - 3 - Vestervej 122



2 - Vestervej 114A

5 - Vestervej 119

STV Ø



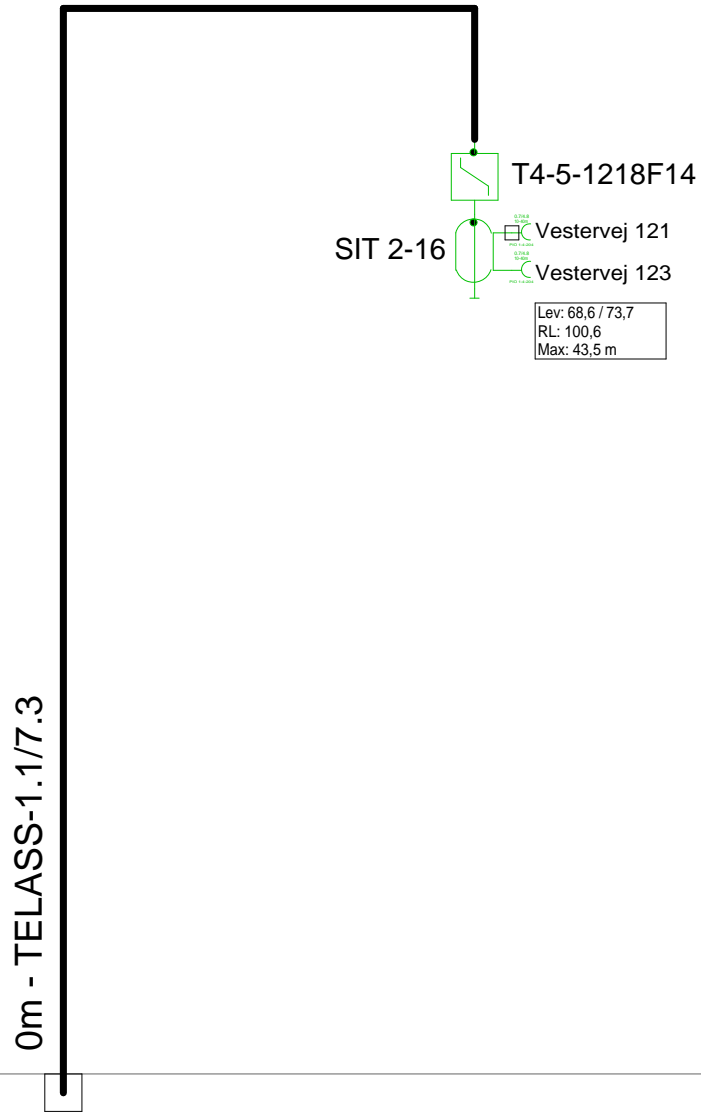
Antenna Installation/Network	Minimum Frequency 267 MHz	Maximum Frequency 1226 MHz
------------------------------	-------------------------------------	--------------------------------------

Operator		
----------	--	--

Version	Edited by Ejvind Hansen	Date 11-09-2018
---------	-----------------------------------	---------------------------

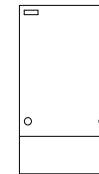
Size	Project 5011406_030D3	Sheet Id:3/No:3, 3/5
------	---------------------------------	-------------------------

5011406_030D3 - 4 - Vestervej 123



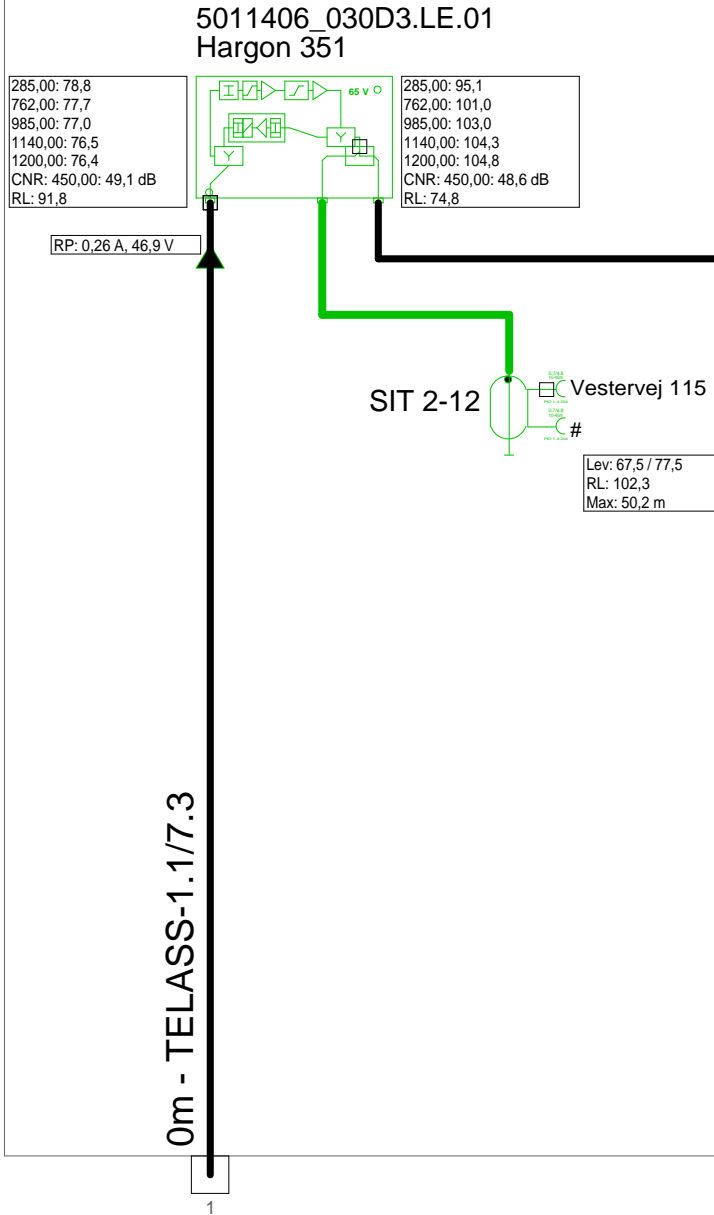
5 - Vestervej 119

STV Ø



Antenna Installation/Network		Minimum Frequency	Maximum Frequency
		267 MHz	1226 MHz
Operator			
Version	Edited by Ejvind Hansen		Date 11-09-2018
Size	Project 5011406_030D3		Sheet Id:4/No:4, 4/5
AND Version 4.12, Serial No. 14000-1-LP for:			Sheet name

5011406_030D3 - 5 - Vestervej 117

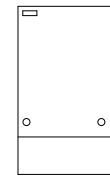


3 - Vestervej 122

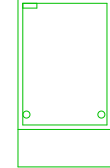
4 - Vestervej 123

Forstærkerliste 5011406_030D3-5		
5011406_030D3.LE.01 / Hargon 351		
A1	94,9	105,0
EQ9dB 1218MHz	Input equ/	Equ: 9 dB
AT0dB	Attenuator	Pad: 0 dB
CS1218-6T	Equalizer	Equ: -7 dB
AT4dB	Interstage	Pad: 4 dB
EQ13dB 1218MHz	Interstage	Equ: 13 dB
Vector returvej		
Vector returvej 204	Modem op	RV: 26 dB
AT5dB	Attenuator	RPad: 5 dB
Vector returvejs udg.	Upstream	RV: 0 dB
AT4dB	Attenuator	RPad: 4 dB
EQ 4dB 204MHz	Equalizer	REqu: 4 dB
Filter ind 204MHz retur		
Filter ud 204MHz retur		
TO15T		

STV Ø



KSAØ 301509 GL
KS3015VSP-AL



Antenna Installation/Network	Minimum Frequency	Maximum Frequency
	267 MHz	1226 MHz
Operator		
Version	Edited by Ejvind Hansen	Date 11-09-2018
Size	Project 5011406_030D3	Sheet Id:5/No:5, 5/5
AND Version 4.12, Serial No. 14000-1-LP for:		Sheet name